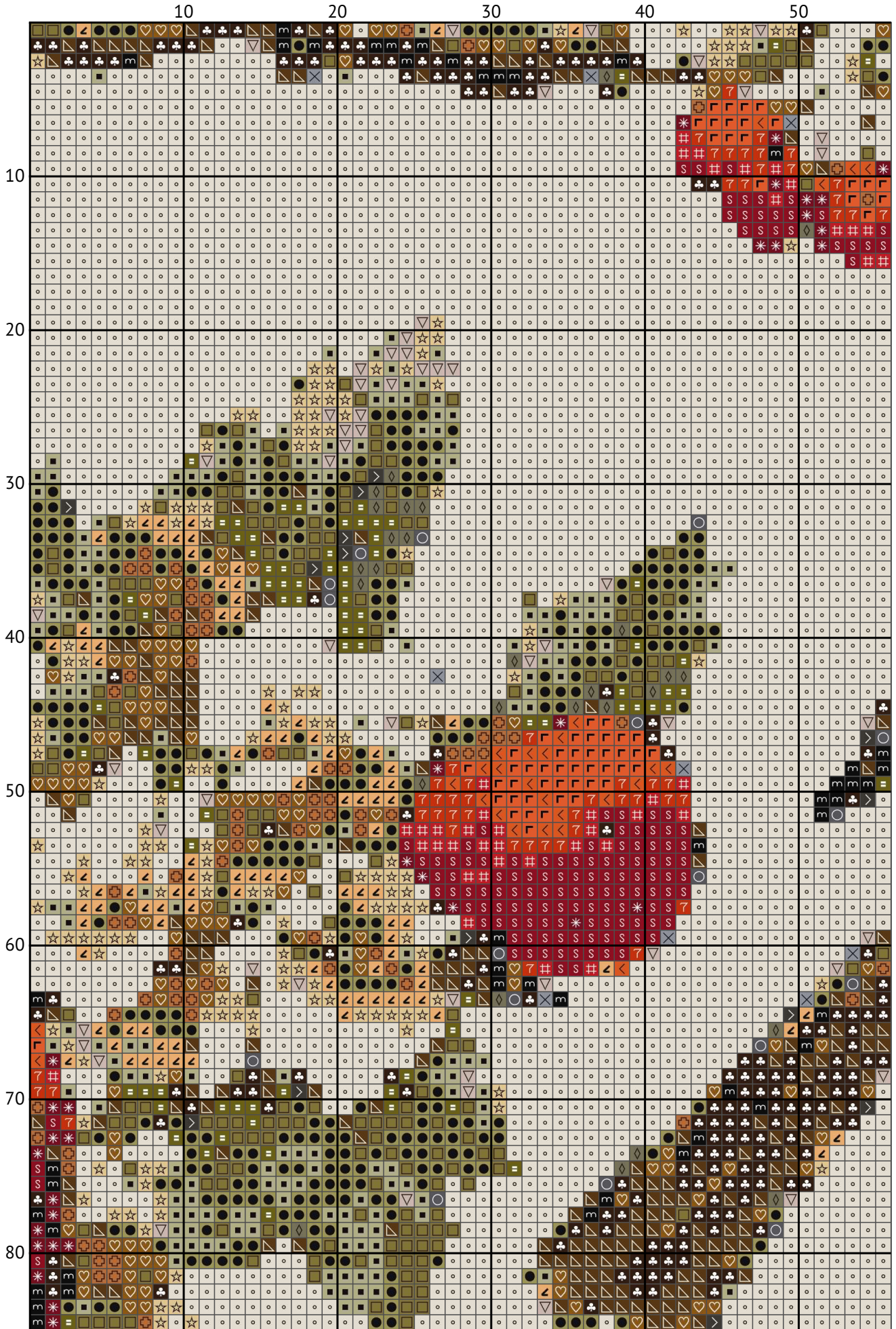


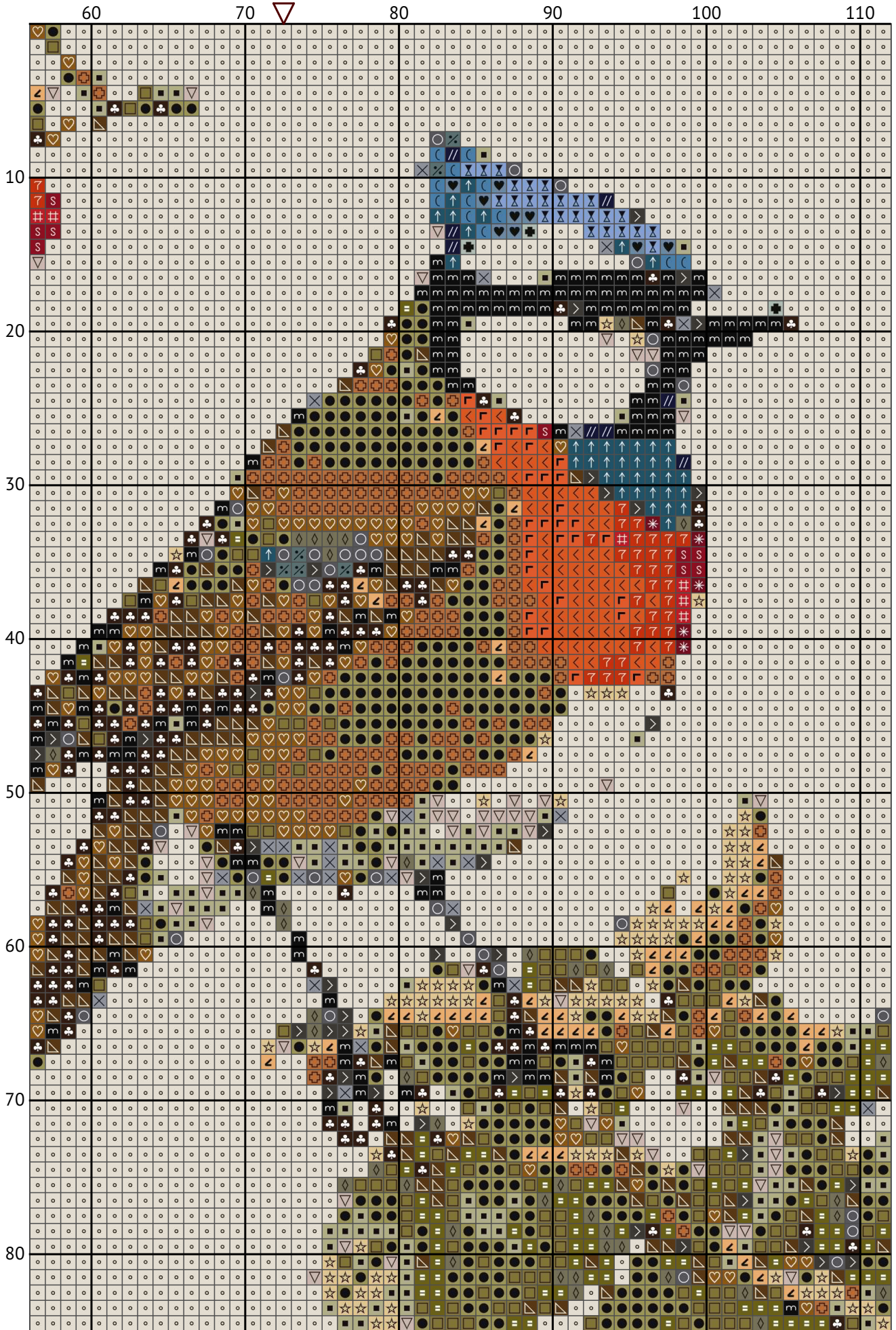
Colorful birds on branches

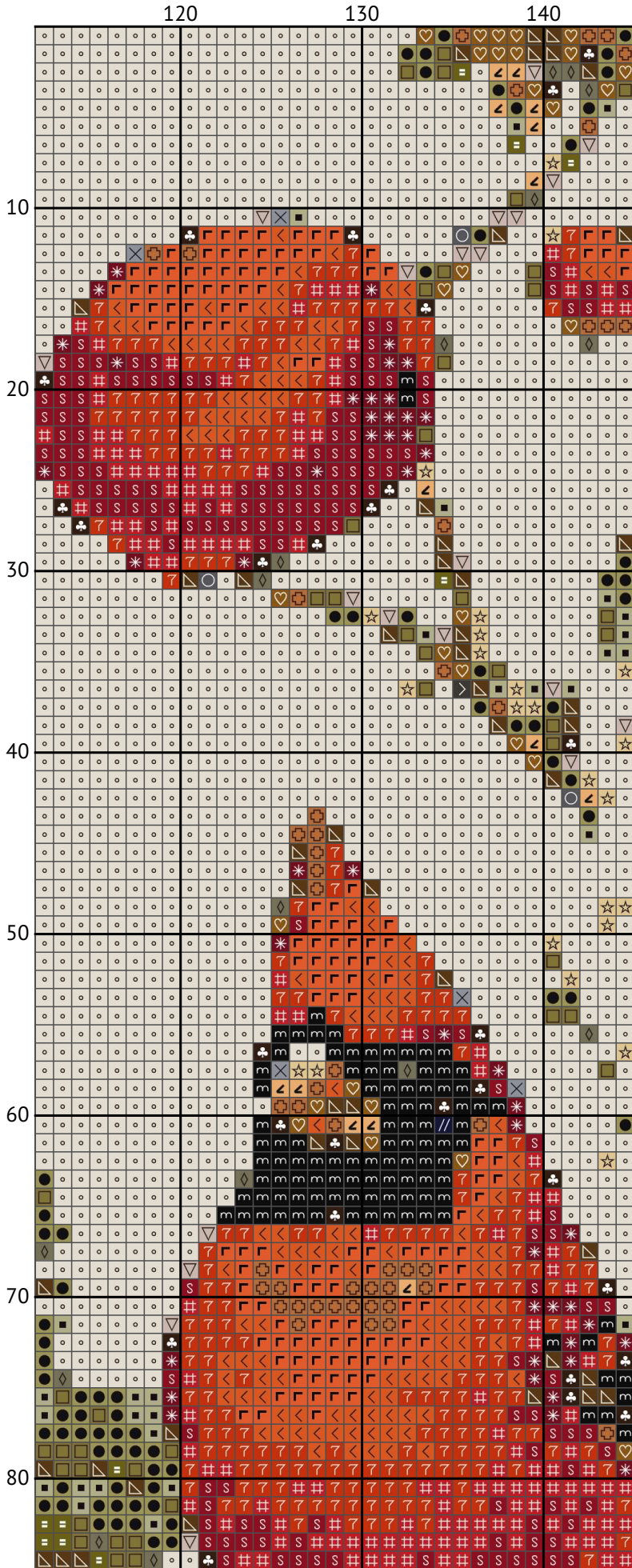
Cross stitch patterns from csp.beehiiv.com

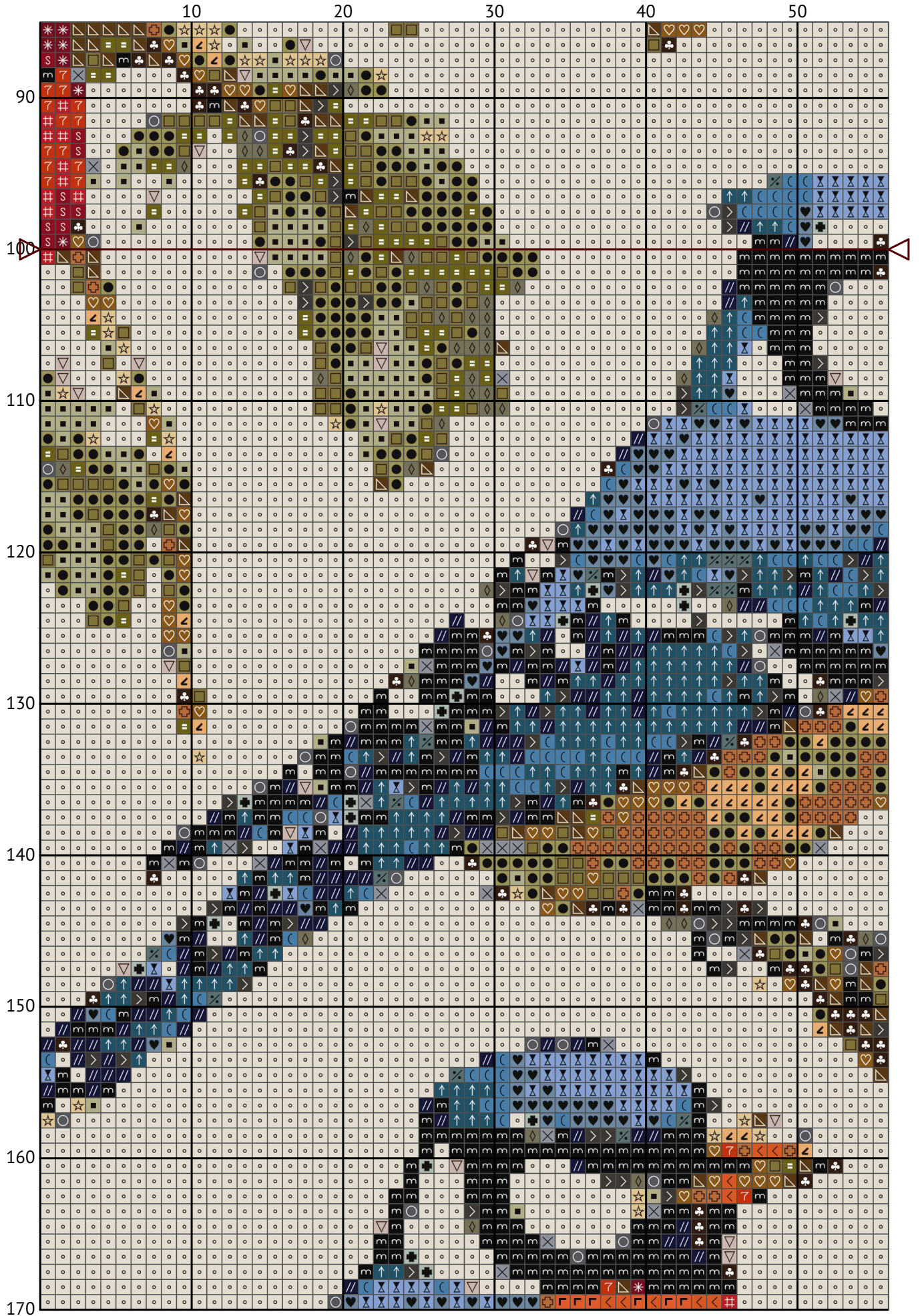


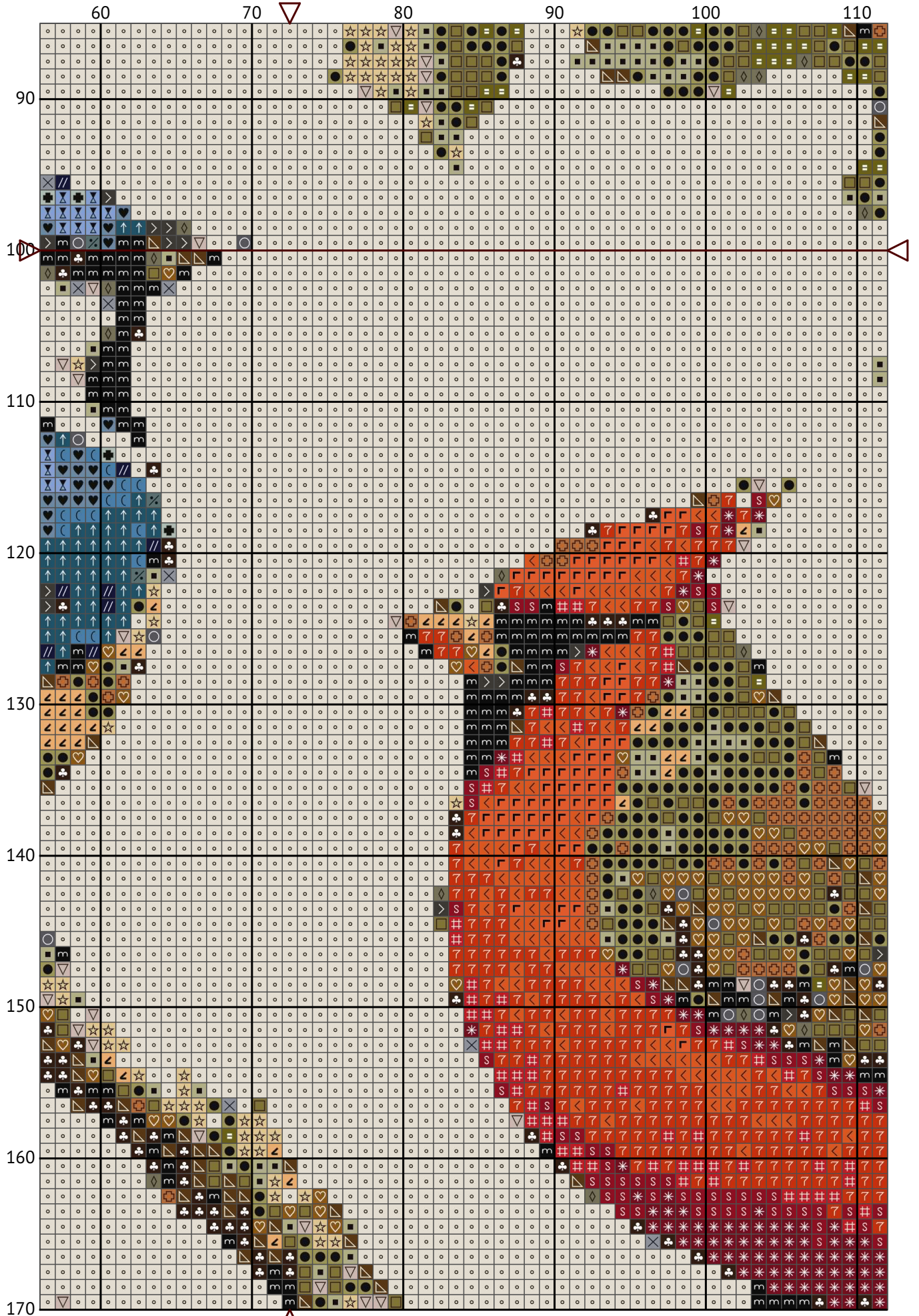
Design size: 145 x 200 stitches

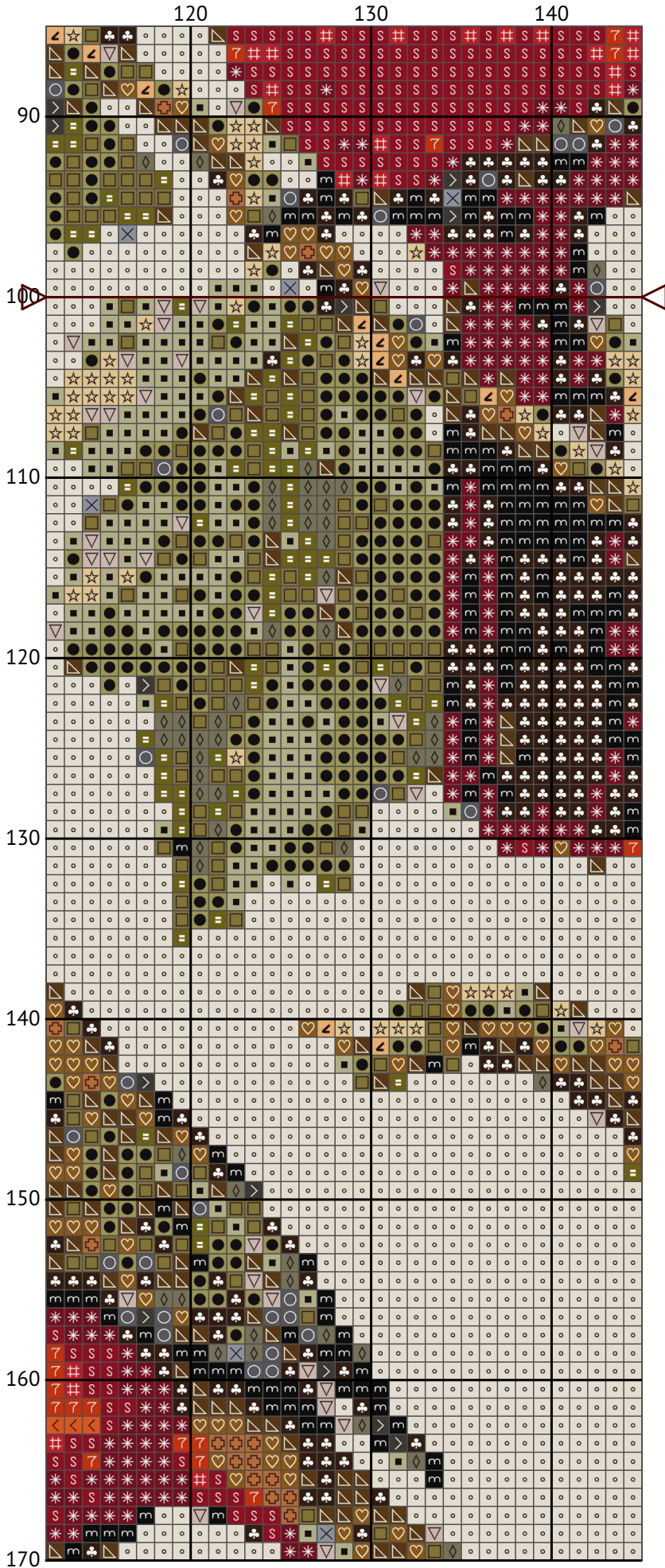


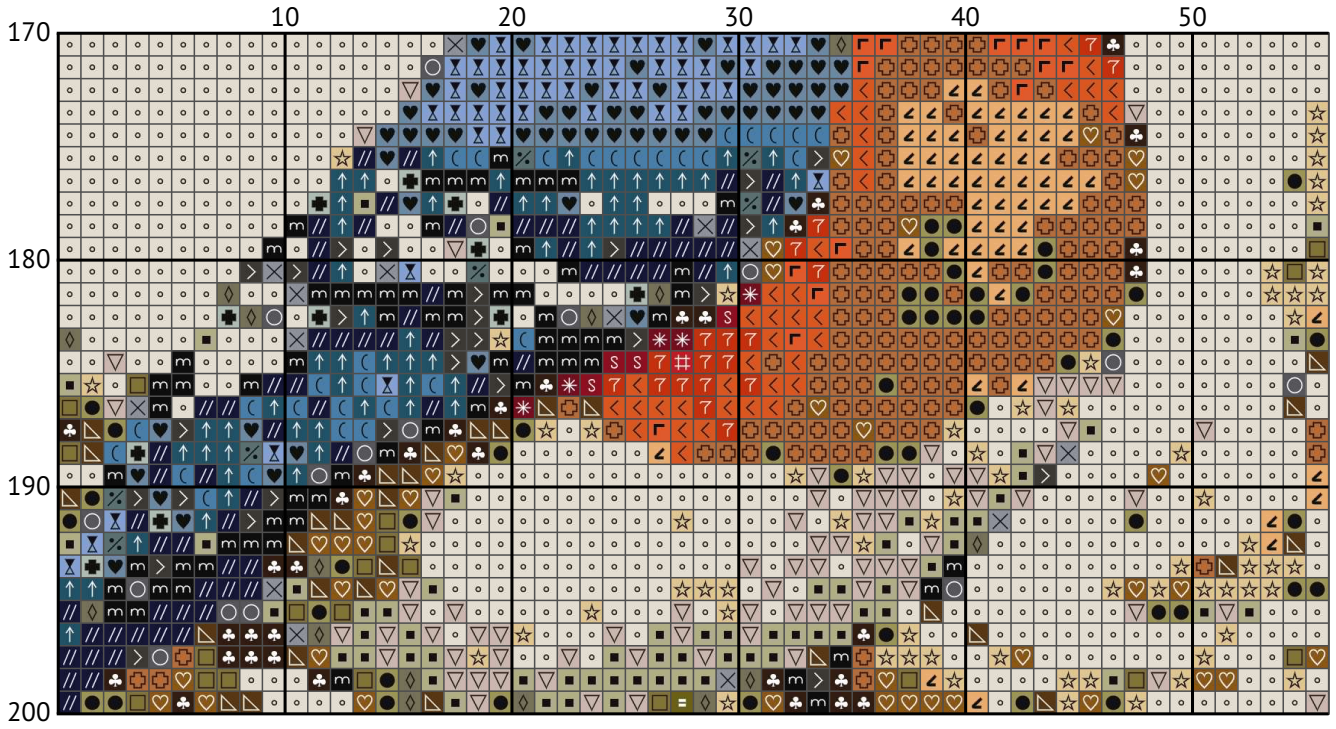


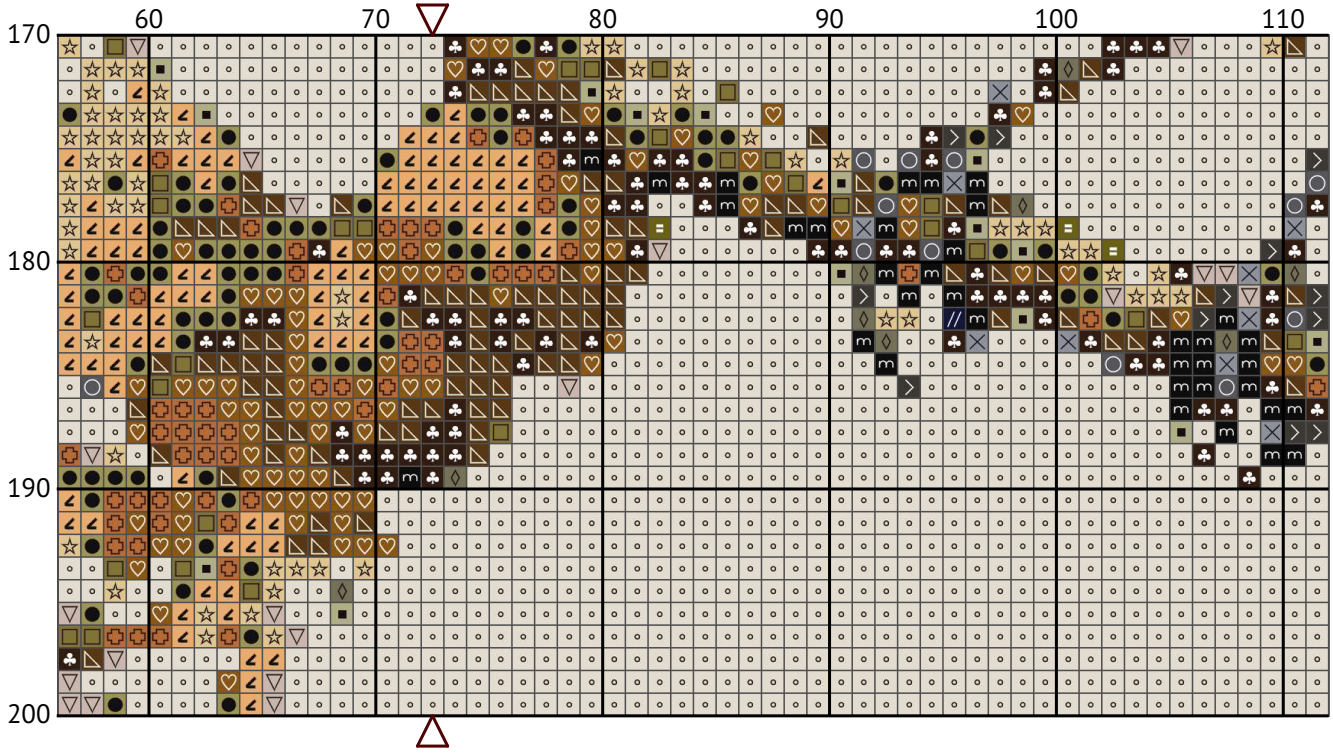


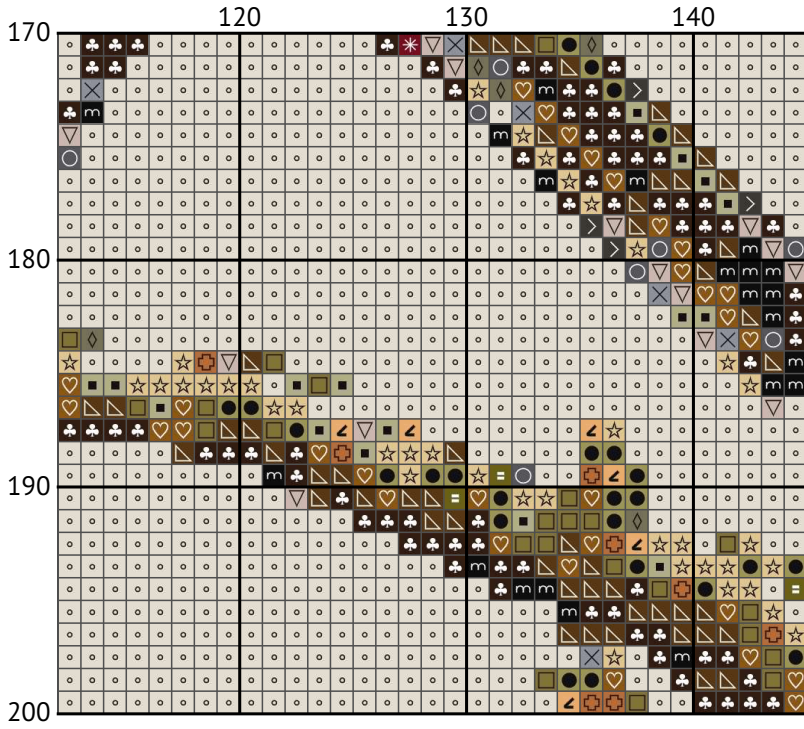












Floss list for crosses

To determine the physical size of a cross-stitch design expressed in stitches, you'll need to know the fabric's thread count, typically referred to as "count." The count of the fabric indicates how many threads (or squares) there are per inch or centimeter. Common fabric counts include 14-count Aida, 16-count Aida, and 18-count Aida, among others.

Here's how you can calculate the size:

Determine the fabric count (e.g., 14-count, 16-count, etc.).

Divide the number of stitches by the fabric count to get the size in inches.

Convert inches to centimeters if needed (1 inch = 2.54 cm).

Example Calculation

Given:

Design size: 145 x 200 stitches

Fabric count: 14-count Aida

Steps:

Calculate the size in inches:

Width: 145 stitches ÷ 14 stitches per inch = 10.36 inches

Height: 200 stitches ÷ 14 stitches per inch = 14.29 inches

Convert to centimeters:

Width: 10.36 inches × 2.54 cm/inch = 26.32 cm












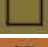














Height: 14.29 inches × 2.54 cm/inch = 36.31 cm


















Summary

For a 14-count fabric:

Width: 10.36 inches (26.32 cm)

Height: 14.29 inches (36.31 cm)

N	Symbol	Number	Name	Stitches
1			DMC 03 Tin - Medium	112
2			DMC 04 Tin - Dark	180
3			DMC 157 Cornflower Blue - Very Light	275
4			DMC 310 Black	1101
5			DMC 347 Salmon - Very Dark	289
6			DMC 370 Mustard - Medium	905
7			DMC 436 Tan	703
8			DMC 453 Shell Gray - Light	339
9			DMC 518 Wedgwood - Light	145
10			DMC 524 Fern Green - Very Light	812
11			DMC 646 Beaver Gray - Dark	230
12			DMC 720 Orange Spice - Dark	623
13			DMC 732 Olive Green	366

N	Symbol	Number	Name	Stitches
14	☆	 ☆	DMC 739 Tan - Ultra Very Light	592
15	✱	 ✱	DMC 777 Raspberry - Very Dark	371
16	S	 S	DMC 816 Garnet	525
17	//	 //	DMC 823 Navy Blue - Dark	226
18	>	 >	DMC 844 Beaver Gray - Ultra Dark	201
19	△	 △	DMC 869 Hazelnut Brown - Very Dark	885
20	└	 └	DMC 922 Copper - Light	342
21	⊘	 ⊘	DMC 926 Gray Green - Medium	33
22	⊕	 ⊕	DMC 928 Gray Green - Very Light	36
23	♥	 ♥	DMC 932 Antique Blue - Light	185
24	♣	 ♣	DMC 938 Coffee Brown - Ultra Dark	918
25	●	 ●	DMC 3013 Khaki Green - Light	1610
26	↑	 ↑	DMC 3809 Turquoise - Very Dark	345
27	♡	 ♡	DMC 3829 Old Gold - Very Dark	670
28	<	 <	DMC 3853 Autumn Gold - Dark	398
29	↙	 ↙	DMC 3856 Mahogany - Ultra Very Light	416
30	◦	 ◦	DMC 3866 Mocha - Ultra Very Light	15167