

# Coffee is always a good idea

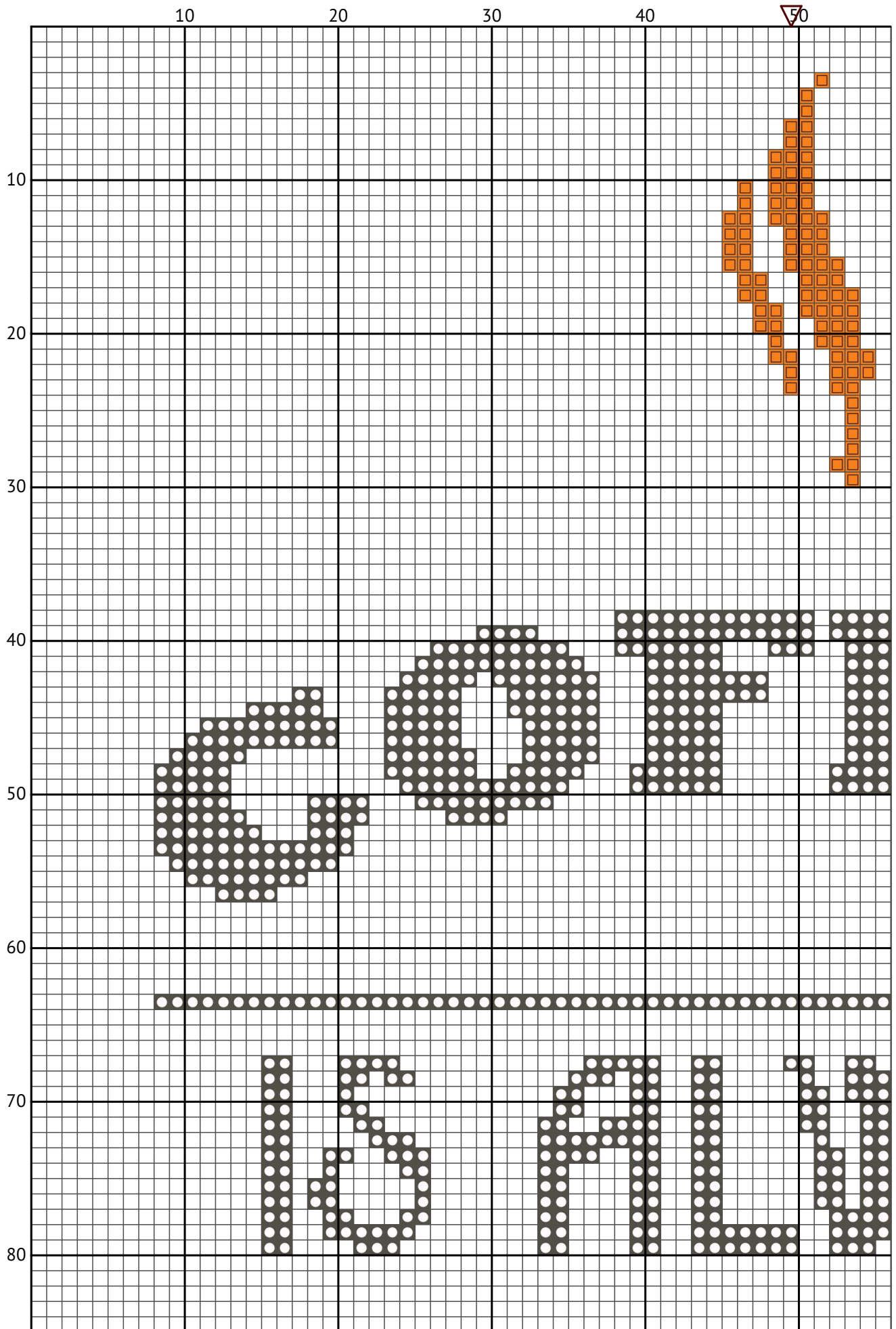
Cross stitch chart from [patterns.stitchingsecrets.com](https://patterns.stitchingsecrets.com)

---

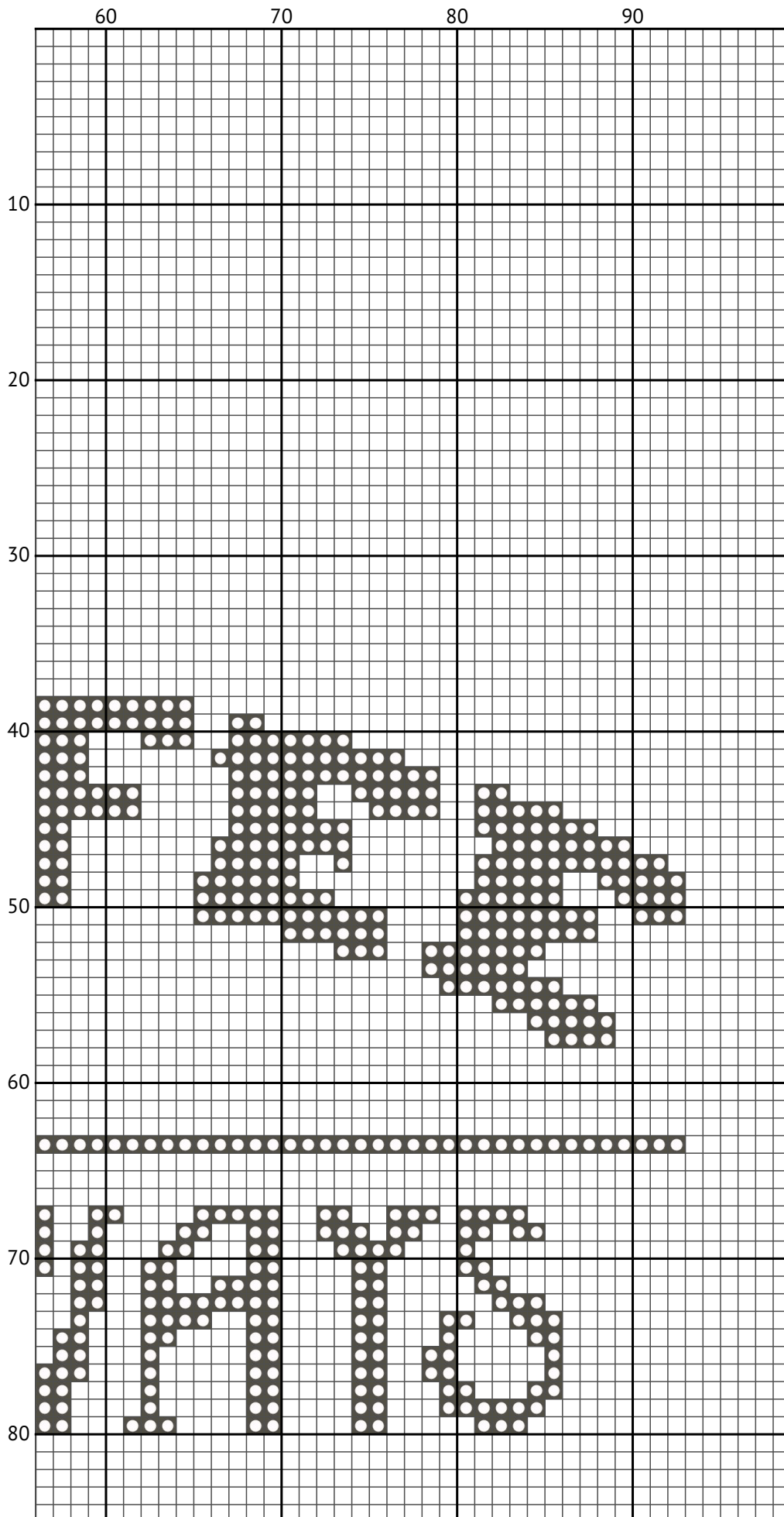


Design size: 99 x 200 stitches

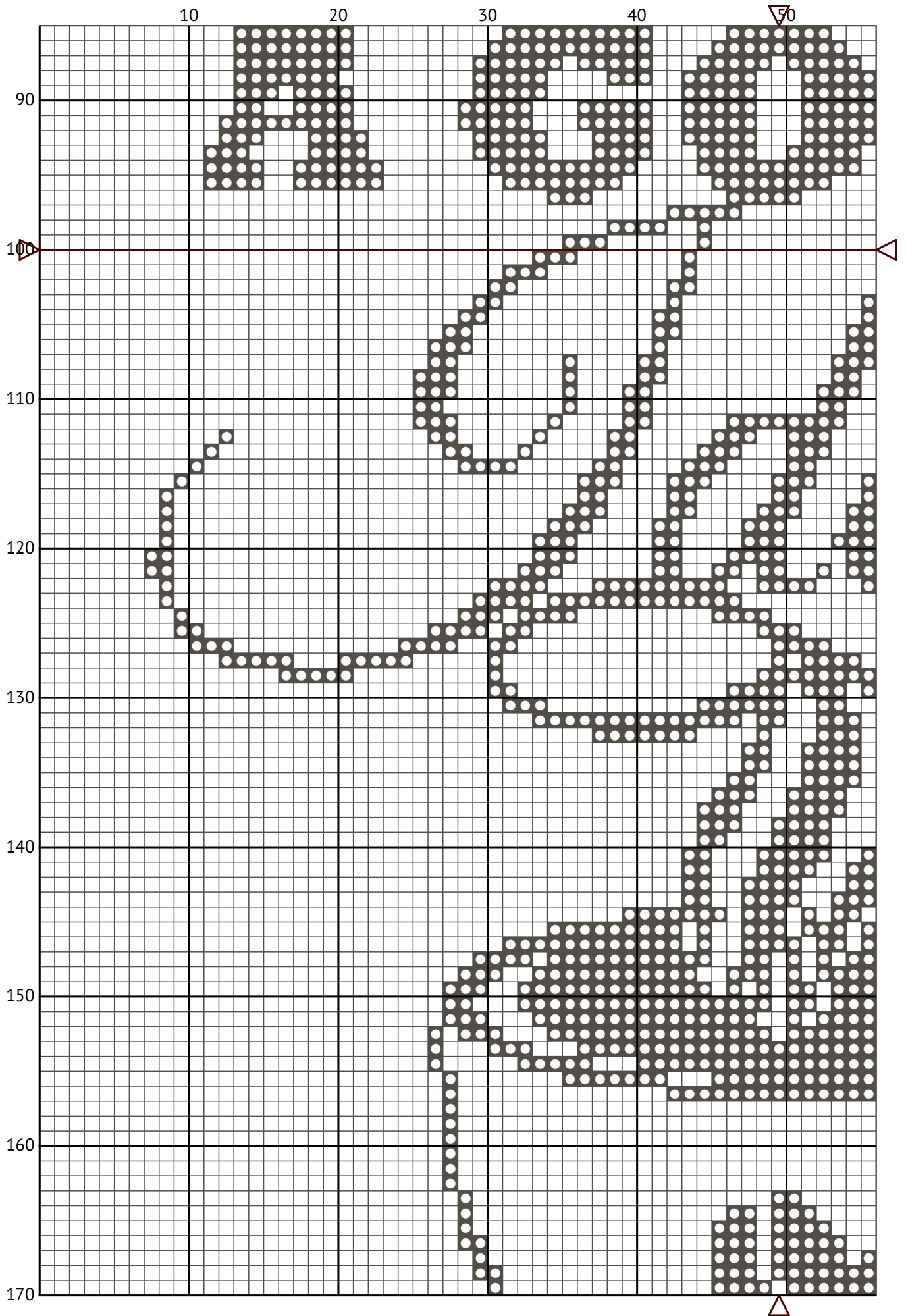
Coffee is always a good idea



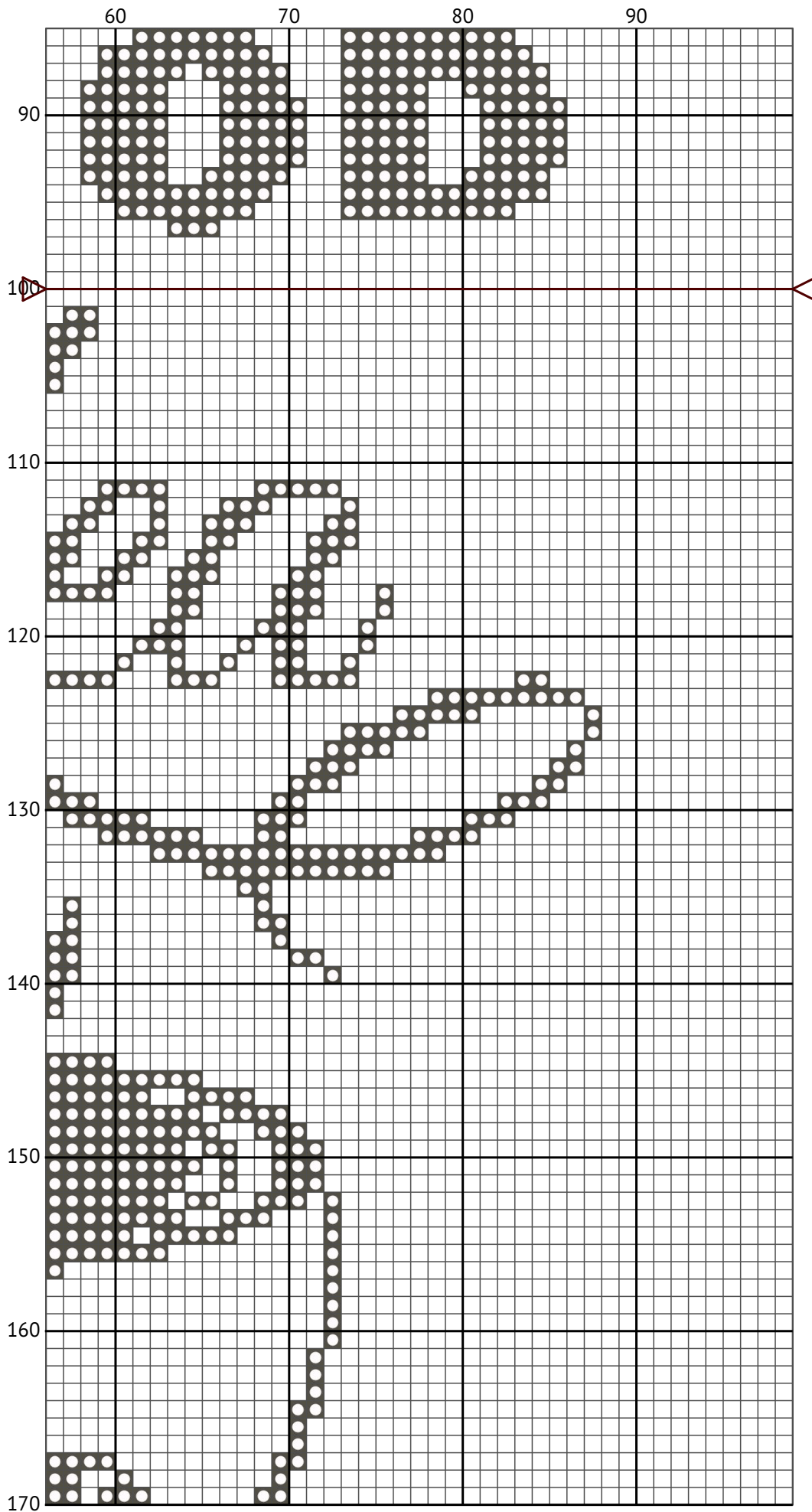
Coffee is always a good idea



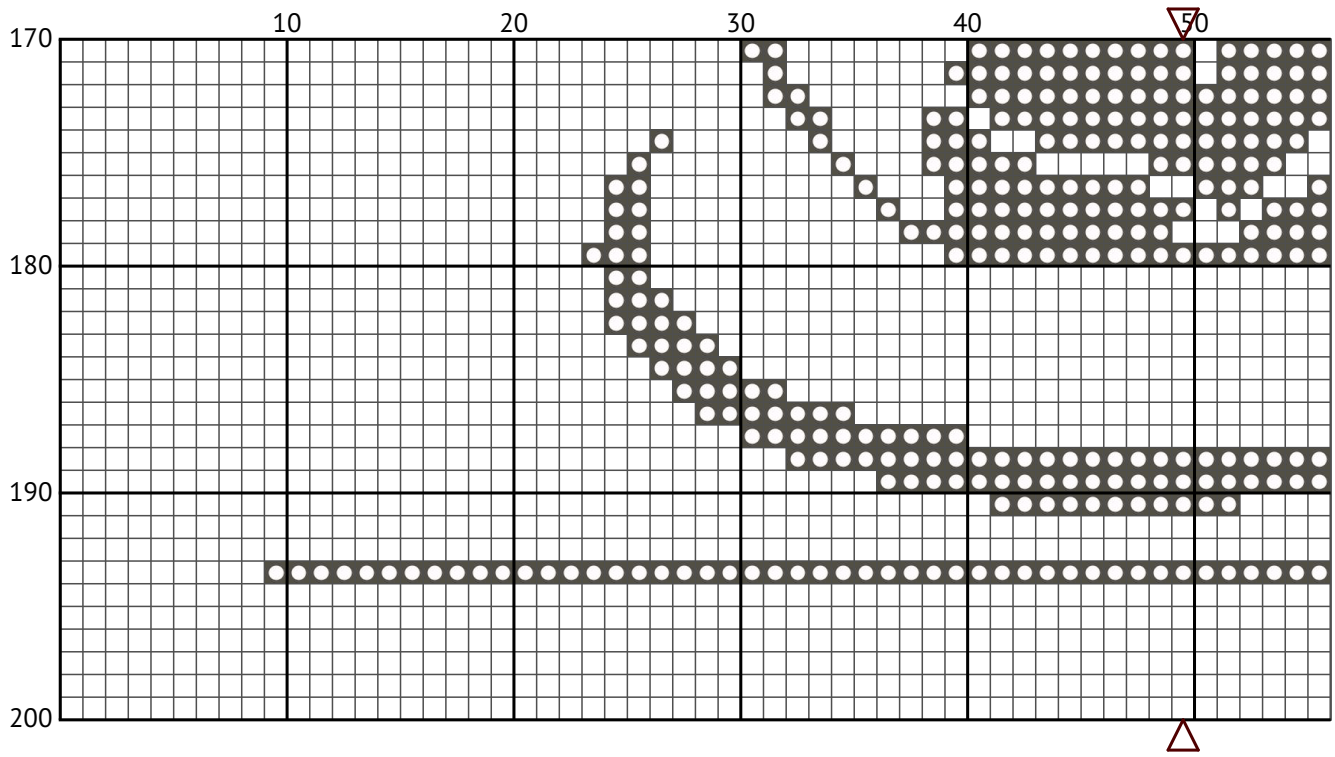
Coffee is always a good idea



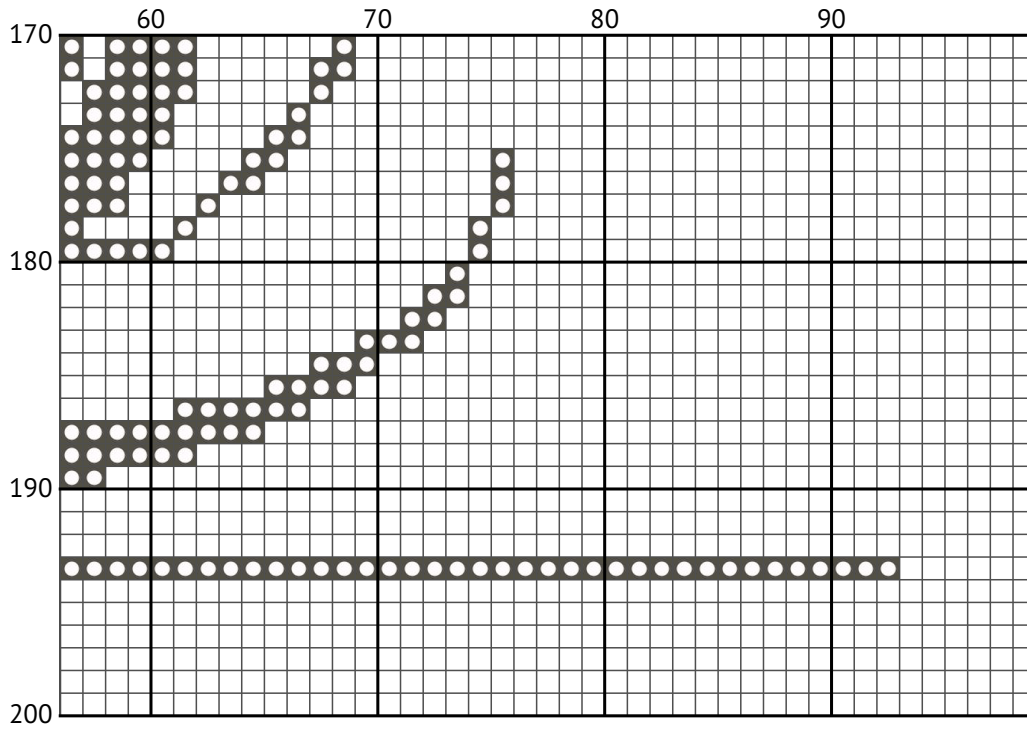
Coffee is always a good idea



Coffee is always a good idea



Coffee is always a good idea



## Floss list for crosses

## How to Convert Cross Stitch Pattern Sizes: A Step-by-Step Guide

When you download a cross stitch pattern, you'll often find the design size expressed in stitches, such as "Design size: 99 x 200 stitches." To determine the physical dimensions of your design, you need to know the fabric's thread count, typically referred to as the "count." In this guide, we'll walk you through converting stitch count to inches and centimeters for a 14-count Aida fabric.

## Understanding Fabric Count

The fabric count indicates how many threads (or squares) there are per inch. For example, a 14-count Aida fabric has 14 stitches per inch. This information is crucial for calculating the physical size of your cross stitch design.

## Example Calculation for 99 x 200 Stitches on 14-Count Aida

Given:

Design size: 99 x 200 stitches

Fabric count: 14-count Aida

Steps to Calculate:

Calculate the size in inches:

Width:  $99 \text{ stitches} \div 14 \text{ stitches per inch} = 7.07 \text{ inches}$

Height:  $200 \text{ stitches} \div 14 \text{ stitches per inch} = 14.29 \text{ inches}$

Convert inches to centimeters (1 inch = 2.54 cm):

Width:  $7.07 \text{ inches} \times 2.54 \text{ cm/inch} = 17.96 \text{ cm}$

Height:  $14.29 \text{ inches} \times 2.54 \text{ cm/inch} = 36.30 \text{ cm}$

Summary of Dimensions for 14-Count Aida

Width: 7.07 inches (17.96 cm)

Height: 14.29 inches (36.30 cm)

Conclusion

By following these steps, you can easily convert any design size in stitches to its physical dimensions in inches or centimeters based on the fabric count you are using. This ensures that your finished cross stitch piece will fit perfectly in your chosen frame or display area.

Happy stitching!

| N | Symbol  | Number  | Name                    | Stitches |
|---|---|---------|-------------------------|----------|
| 1 |  | DMC 645 | Beaver Gray - Very Dark | 3218     |
| 2 |  | DMC 741 | Tangerine - Medium      | 88       |