

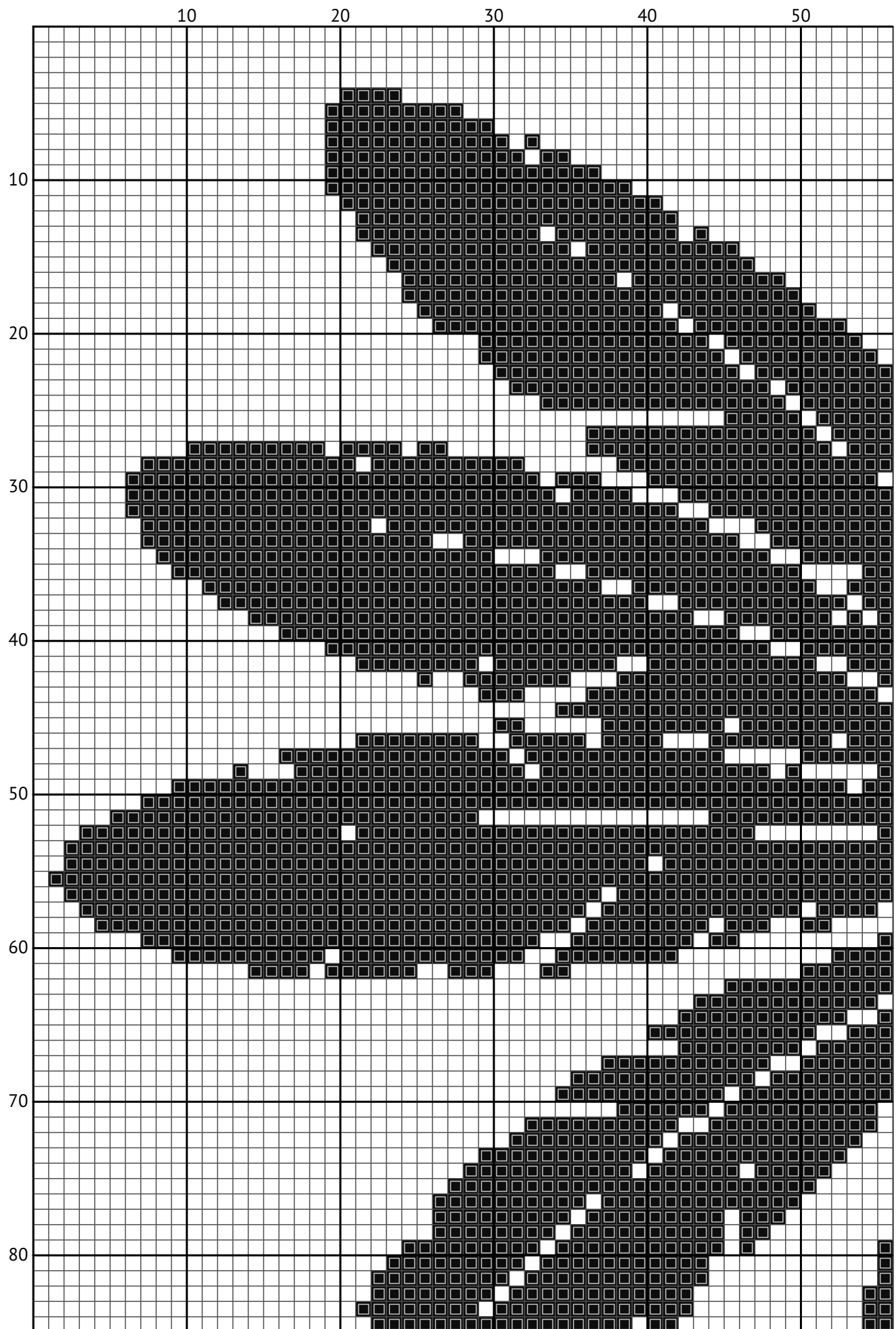
Indian

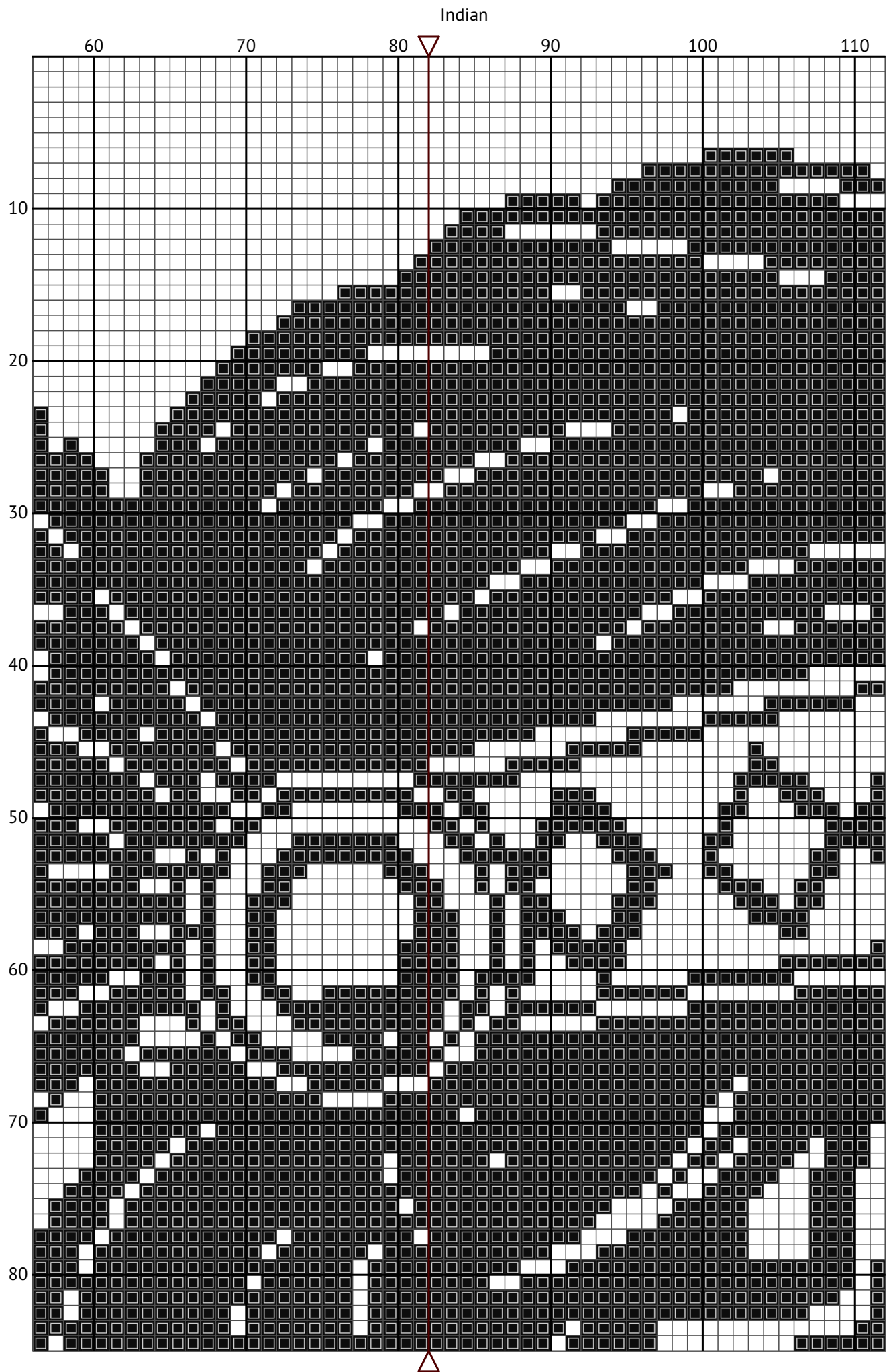
Cross stitch chart from patterns.stitchingsecrets.com



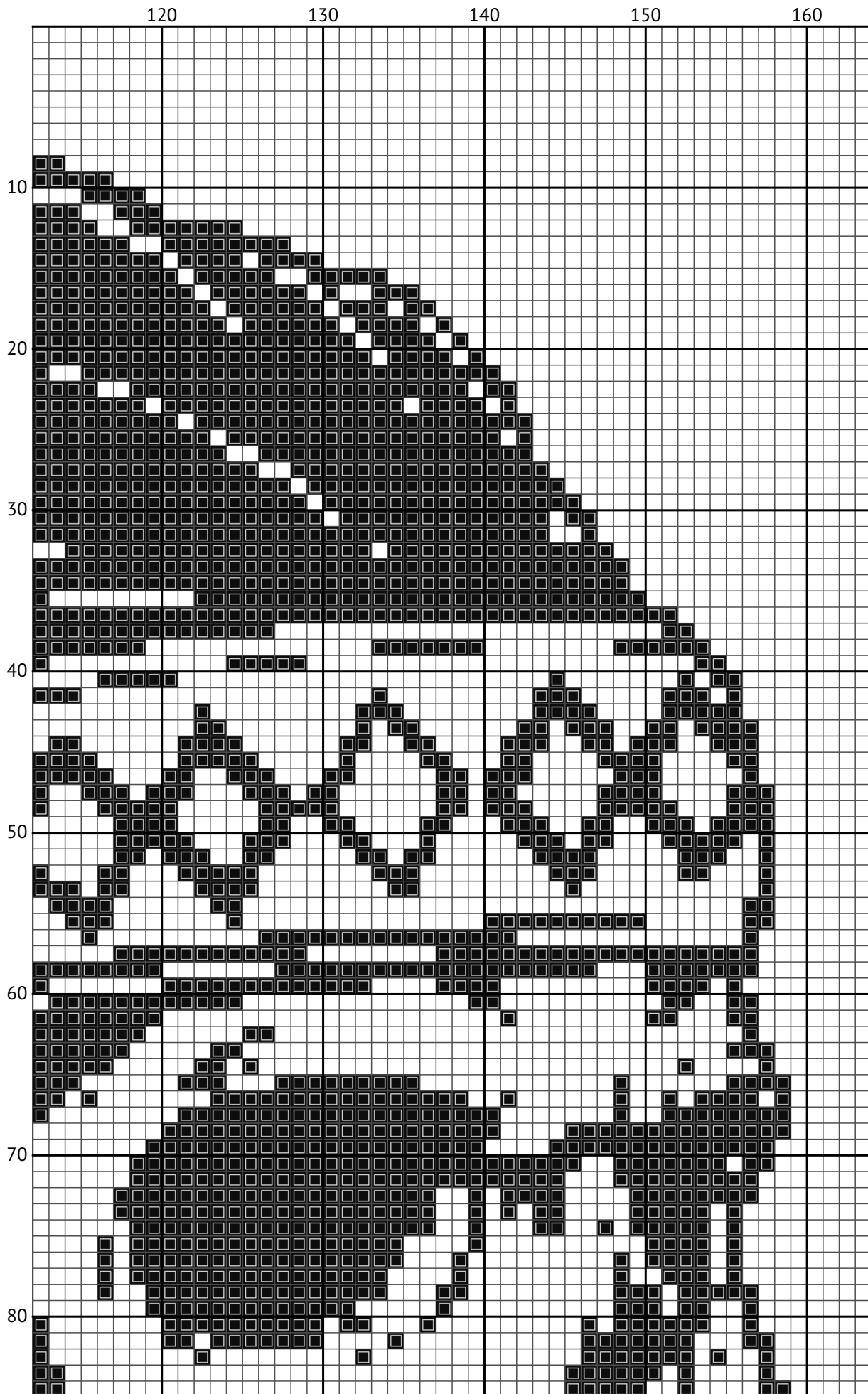
Design size: 164 x 200 stitches

Indian

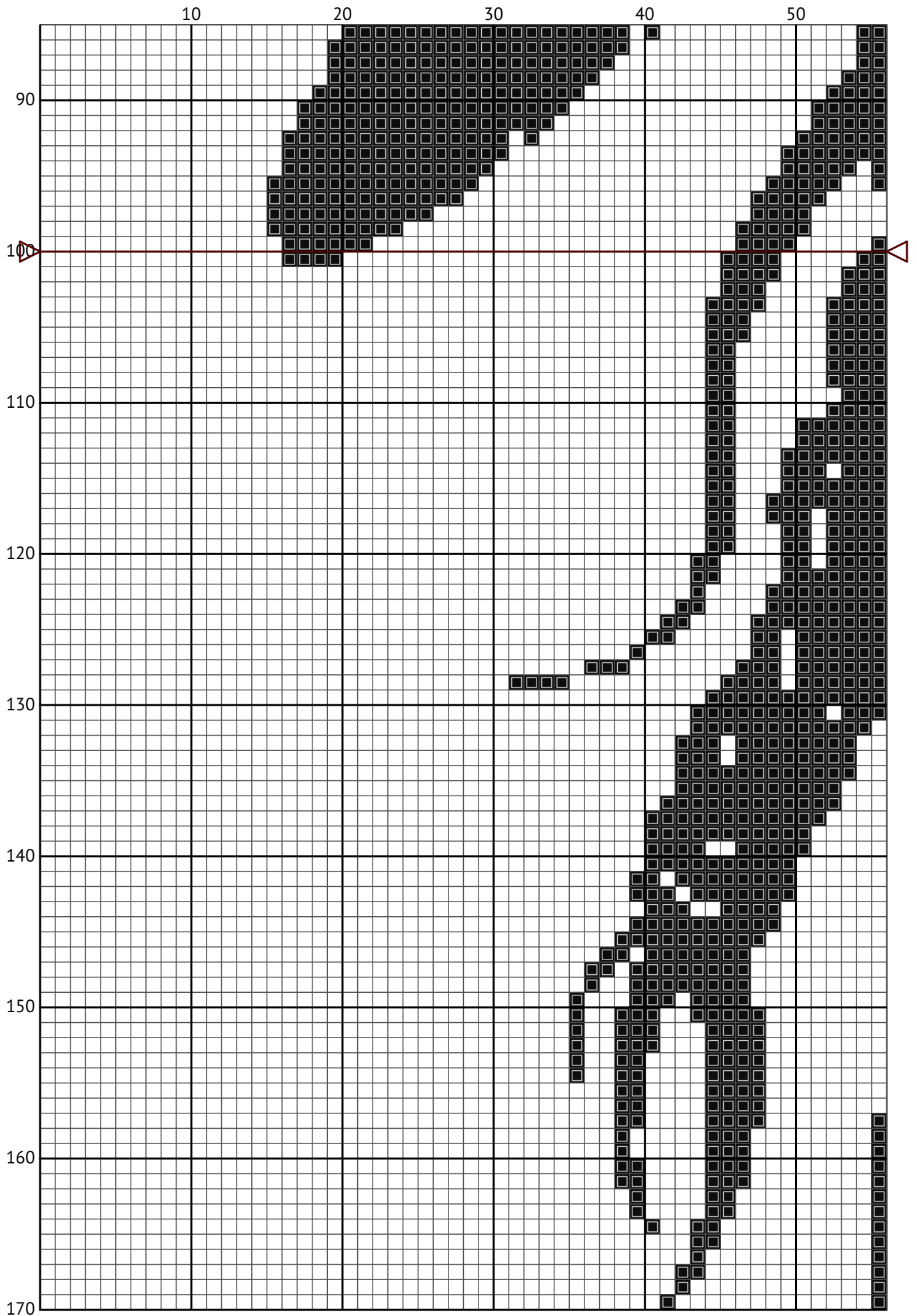




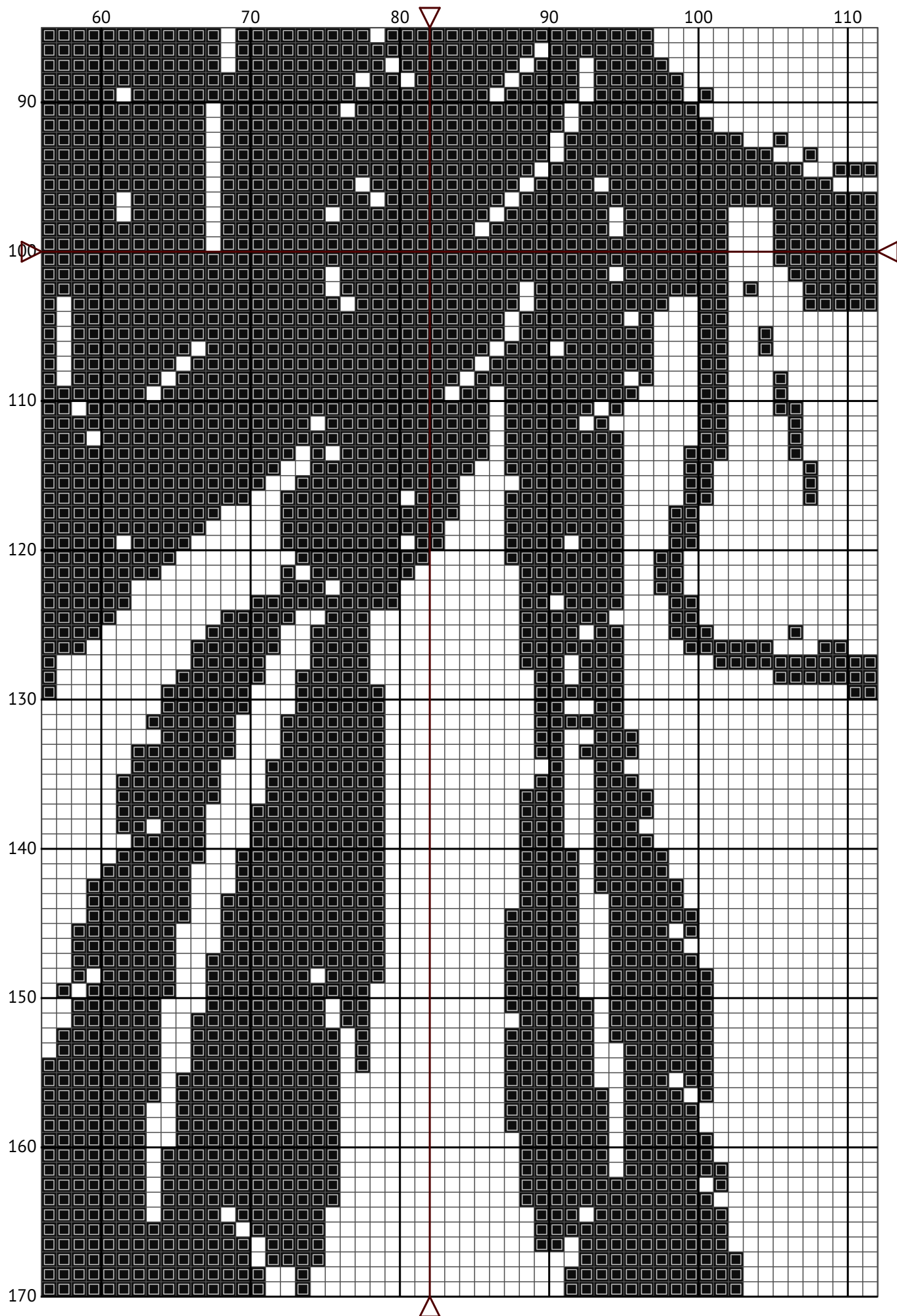
Indian



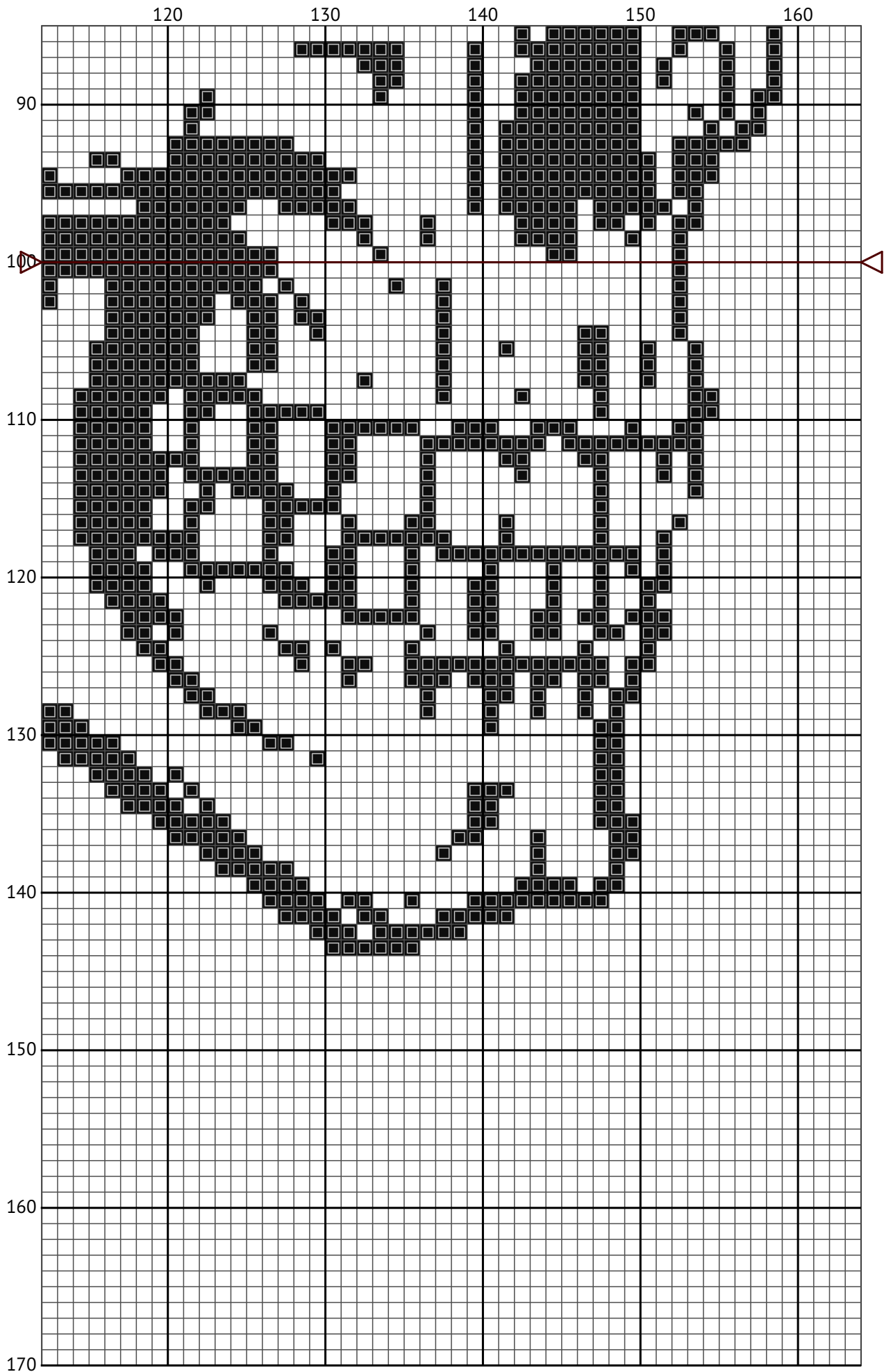
Indian



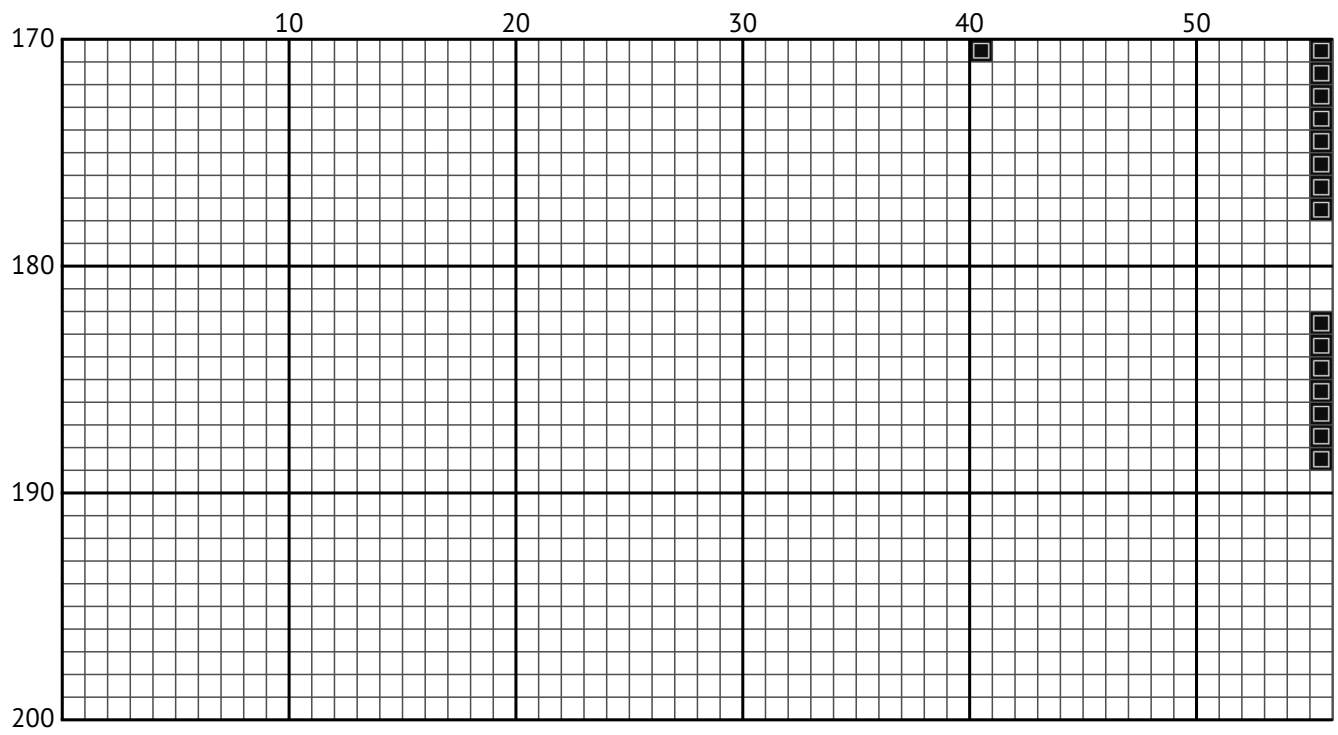
Indian

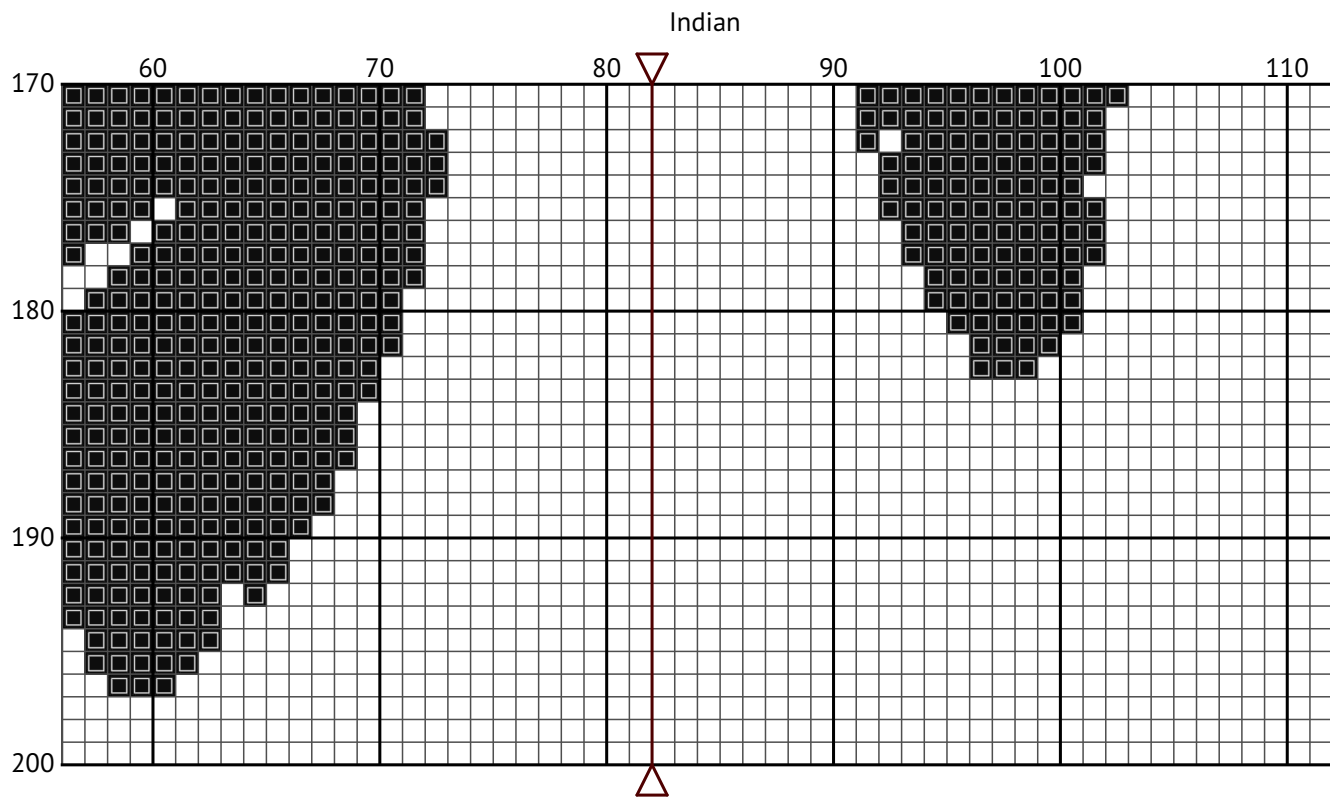


Indian

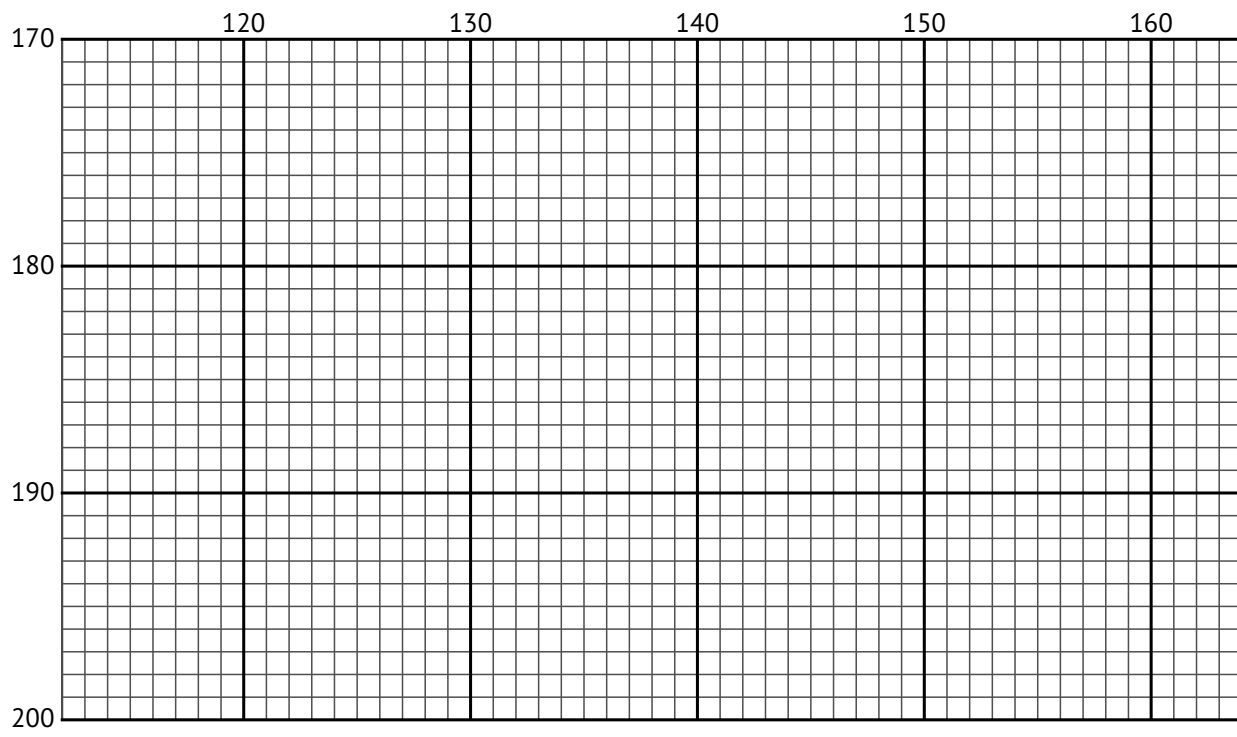


Indian





Indian



Floss list for crosses

How to Convert Cross Stitch Pattern Sizes: A Step-by-Step Guide (164 x 200 Stitches)

When you download a cross stitch pattern, you'll often see the design size given in stitches, such as "Design size: 164 x 200 stitches." To find the actual size of the finished piece, you need to know the fabric's thread count, often referred to as the "count."

This guide shows you how to convert stitch count to inches and centimeters using 14-count Aida fabric as an example.

Understanding Fabric Count

The fabric count tells you how many stitches fit into one inch.

For example, 14-count Aida means there are 14 stitches per inch.

This number is key to figuring out the actual size of your stitched design.

Example Calculation for 164 x 200 Stitches on 14-Count Aida

Given:

Design size: 164 x 200 stitches

Fabric count: 14-count Aida

Steps:

Calculate size in inches:

Width: $164 \div 14 = 11.71$ inches

Height: $200 \div 14 = 14.29$ inches

Convert inches to centimeters (1 inch = 2.54 cm):

Width: $11.71 \times 2.54 = 29.74$ cm

Height: $14.29 \times 2.54 = 36.30$ cm



Summary of Dimensions for 14-Count Aida

Width: 11.71 inches (29.74 cm)

Height: 14.29 inches (36.30 cm)

Conclusion

By dividing the stitch count by the fabric count and converting the result to centimeters if needed, you can accurately size your cross stitch project. This makes it easier to choose the right frame, hoop, or fabric cut.

N	Symbol	Number	Name	Stitches
1	 	DMC 310	Black	12095