

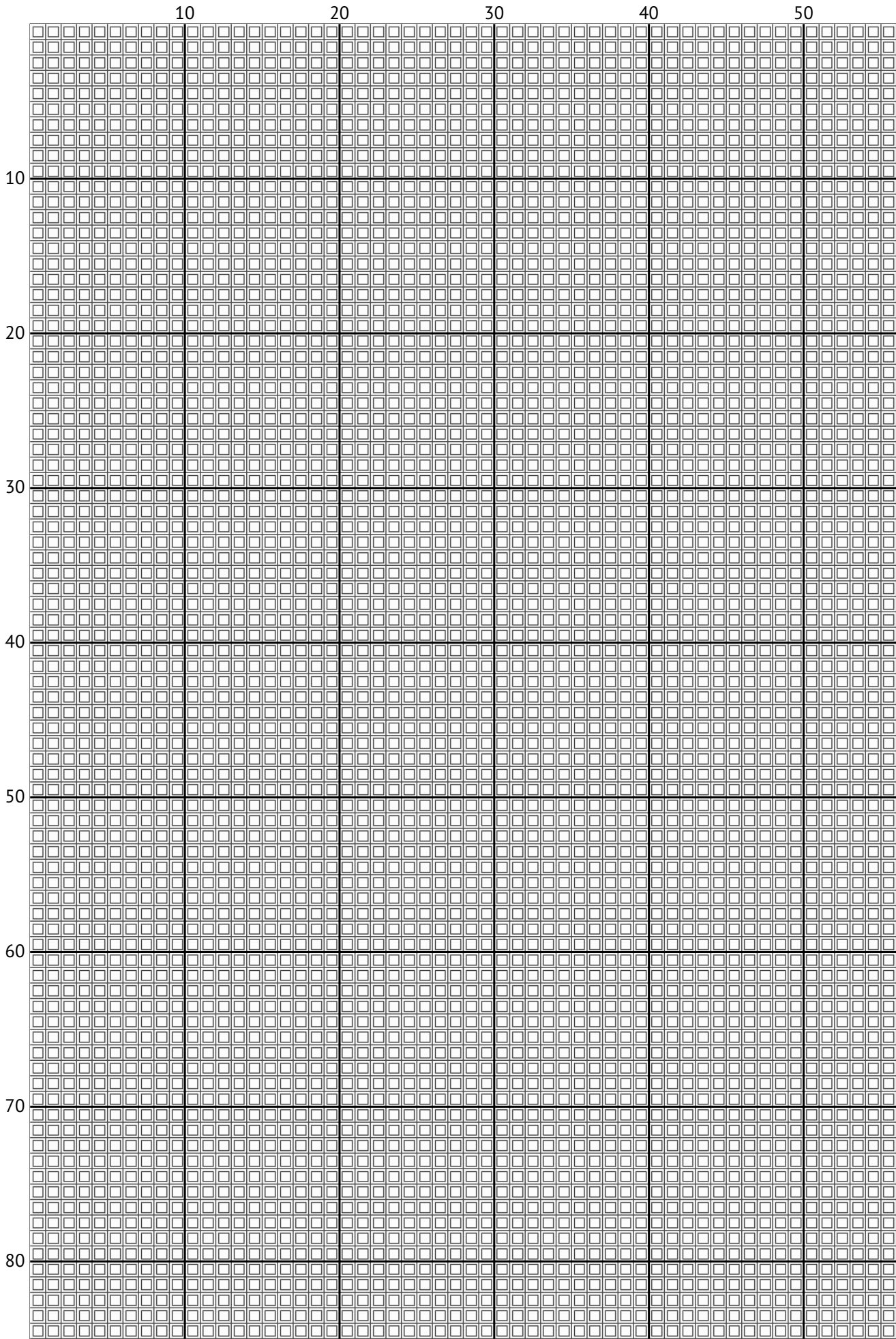
Orange fox sitting with its tail curled around its side

Cross stitch patterns from csp.beehiiv.com

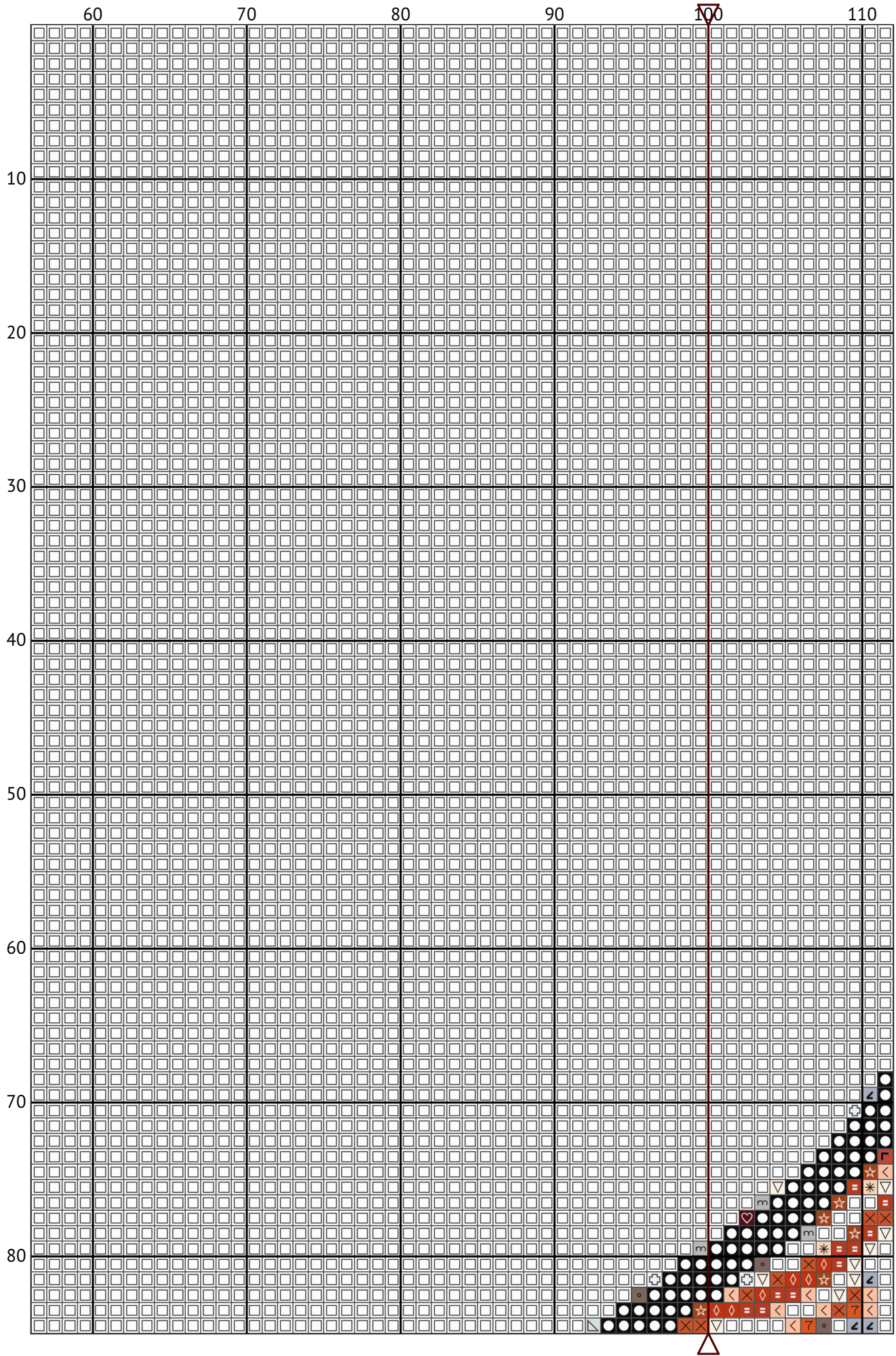


Design size: 200 x 200 stitches

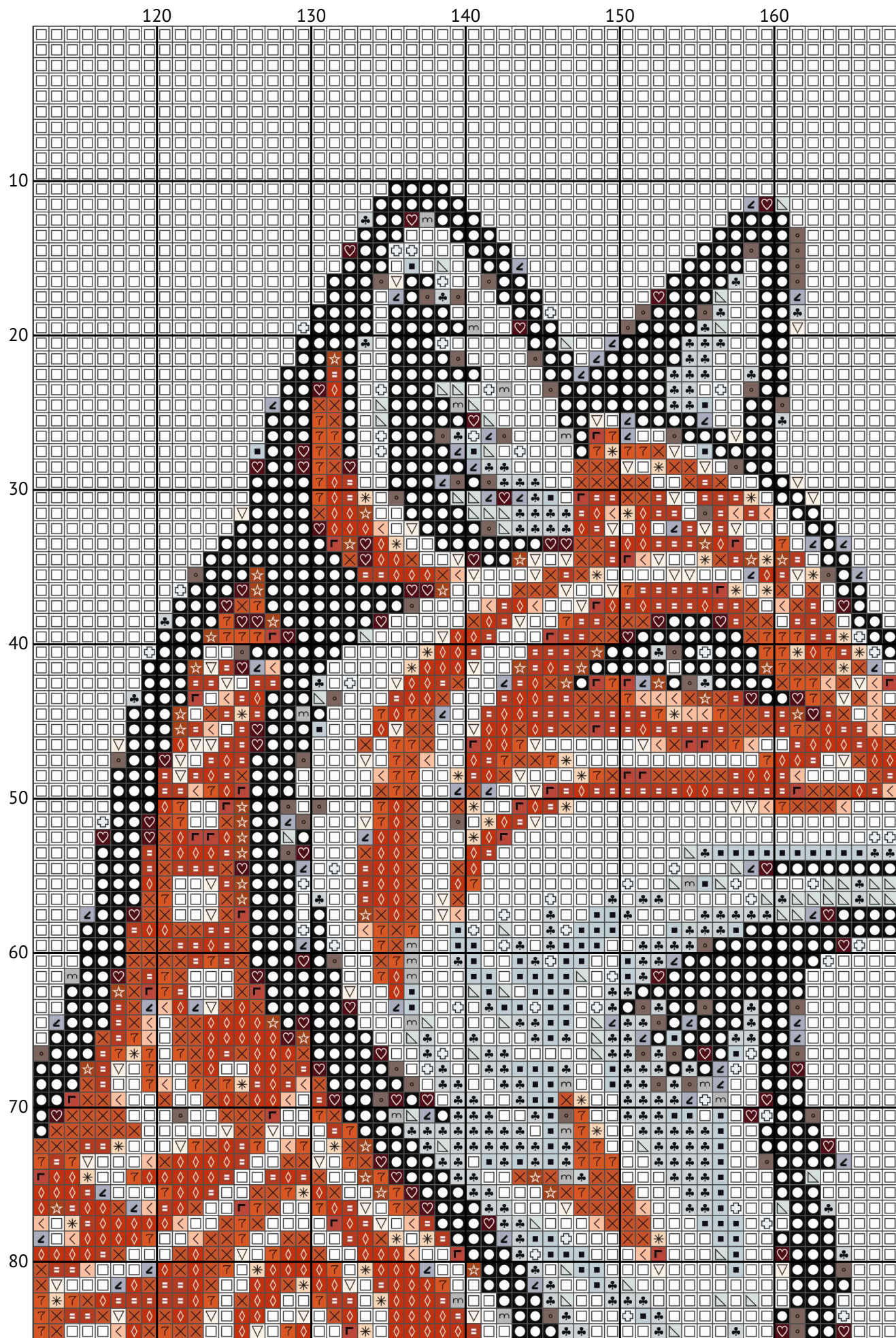
Orange fox sitting with its tail curled around its side



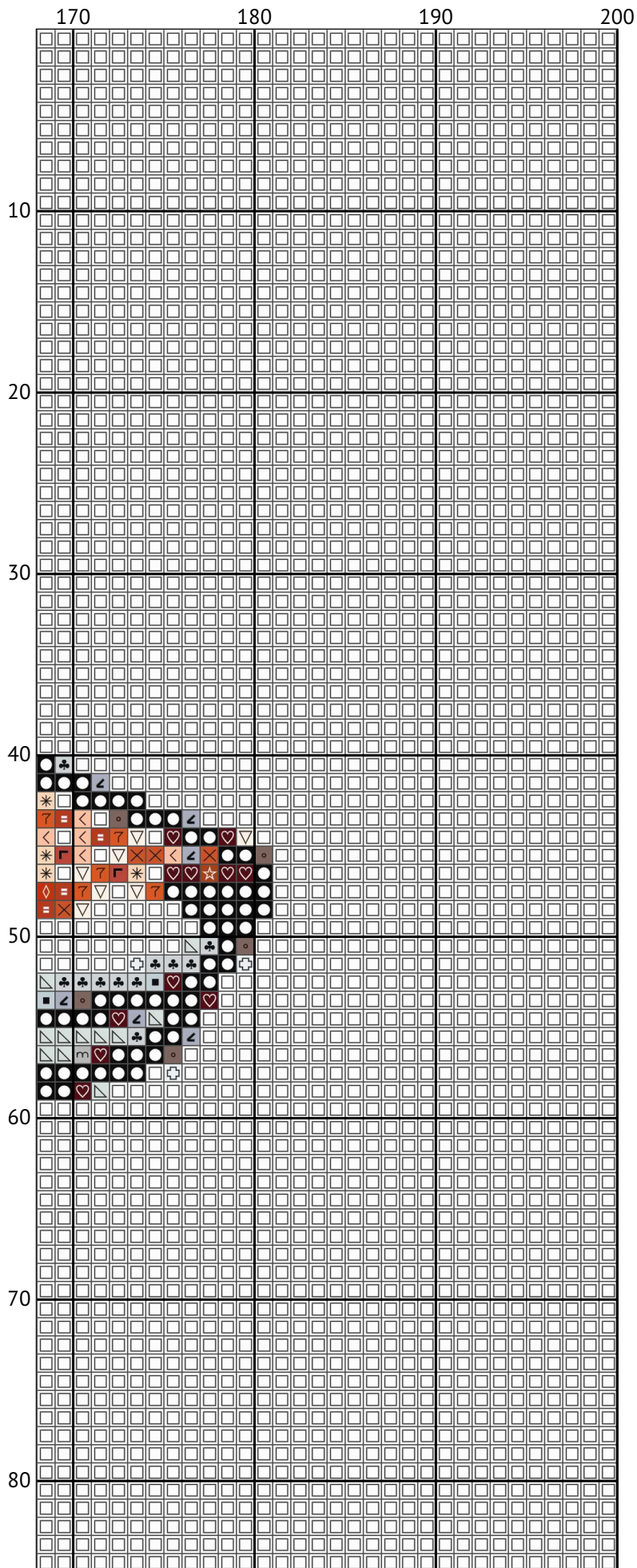
Orange fox sitting with its tail curled around its side



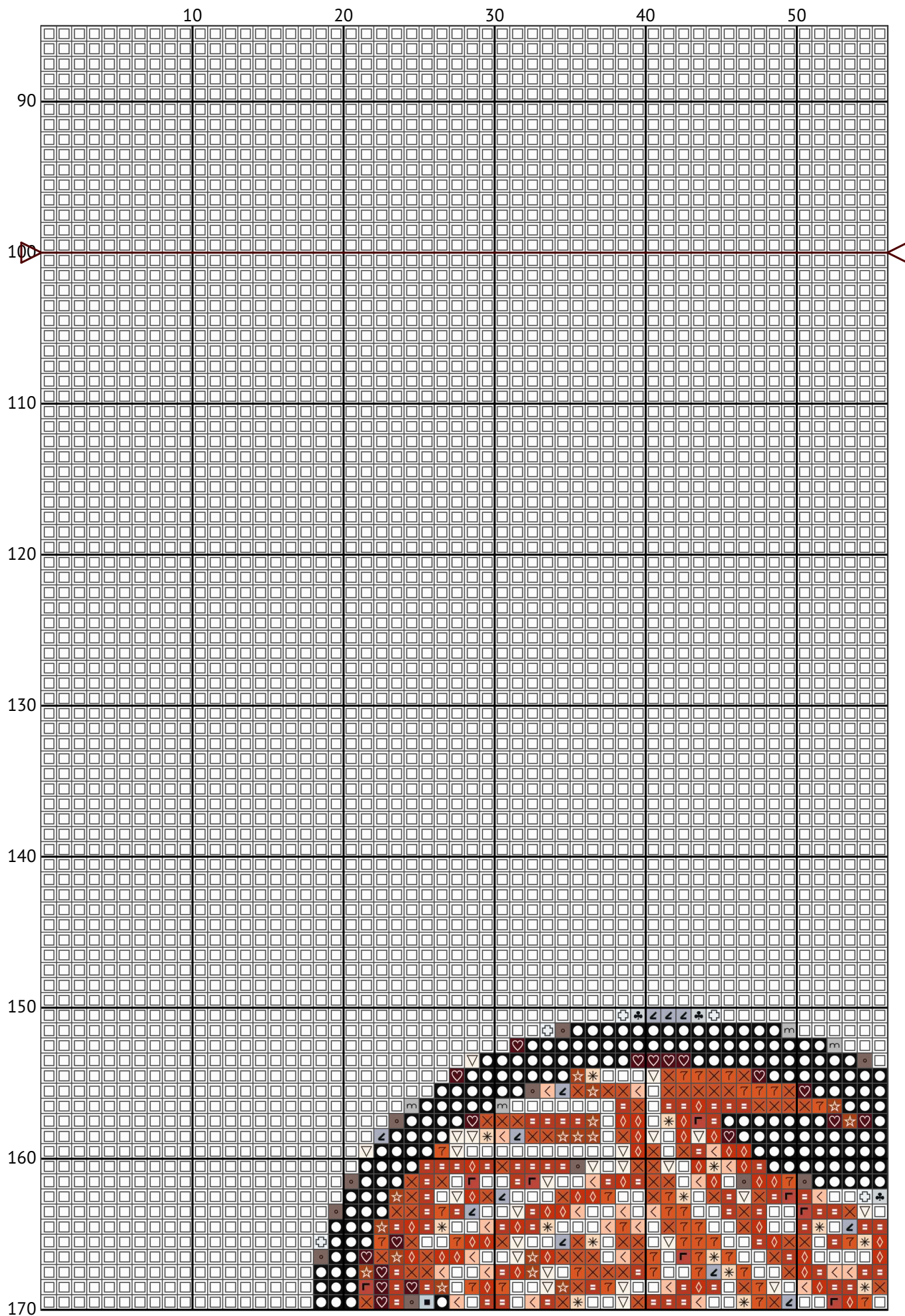
Orange fox sitting with its tail curled around its side



Orange fox sitting with its tail curled around its side



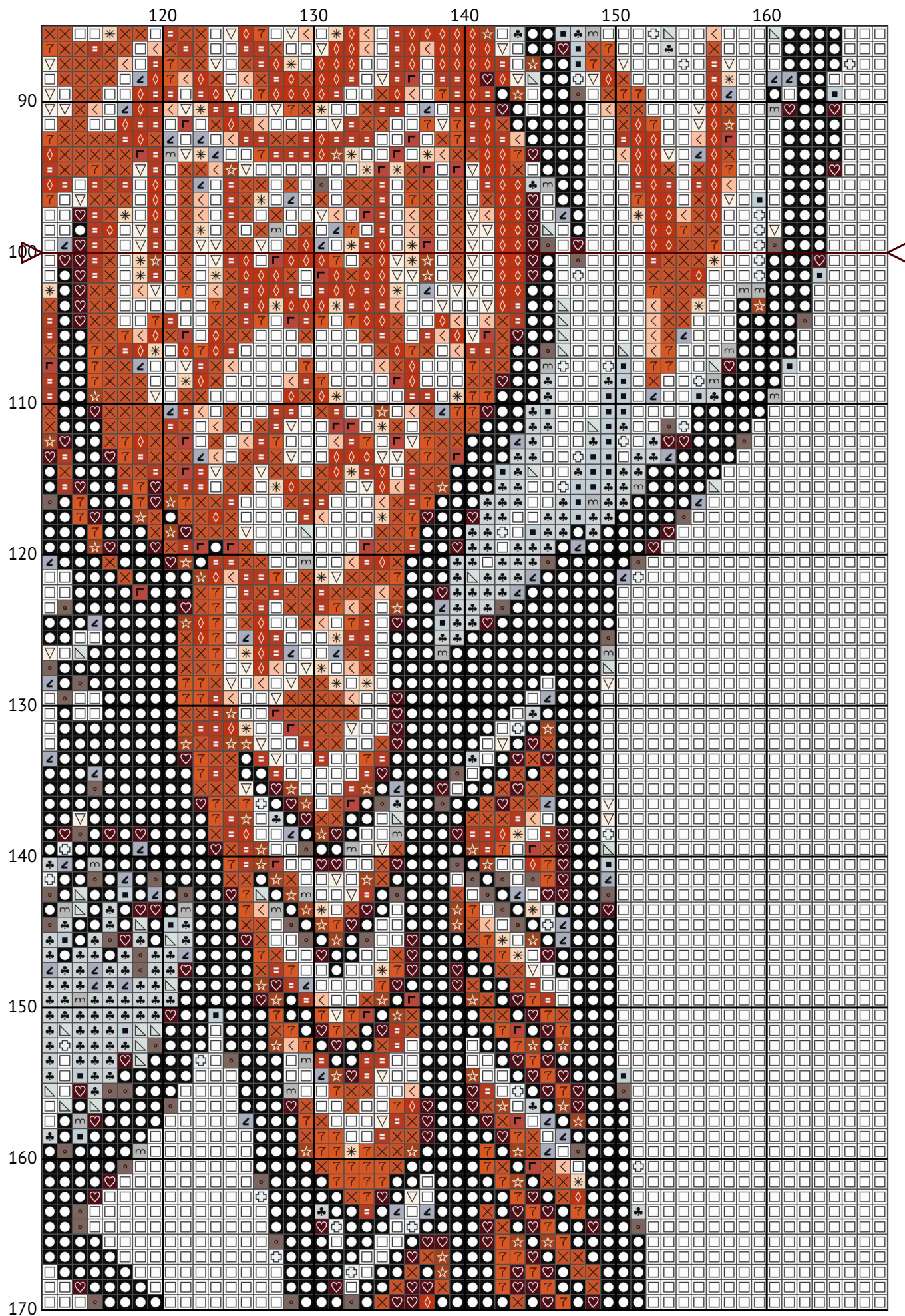
Orange fox sitting with its tail curled around its side



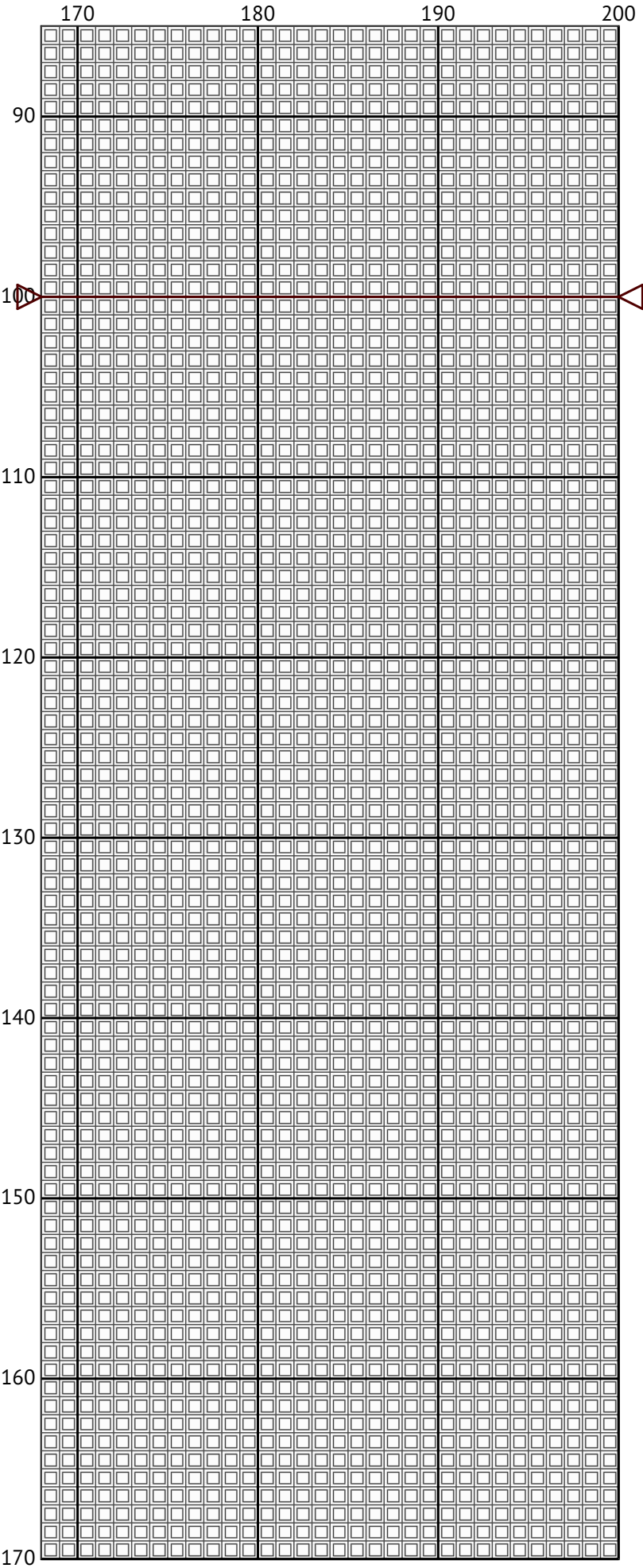
Orange fox sitting with its tail curled around its side



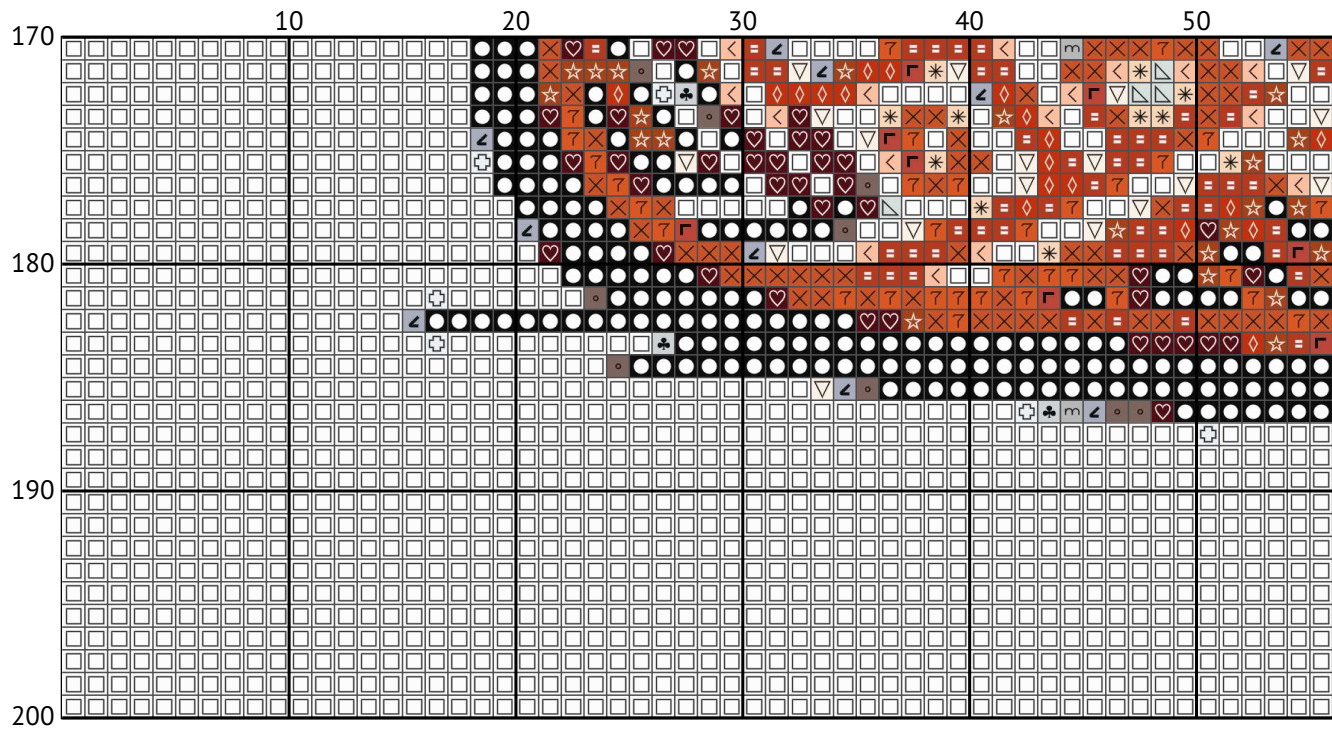
Orange fox sitting with its tail curled around its side



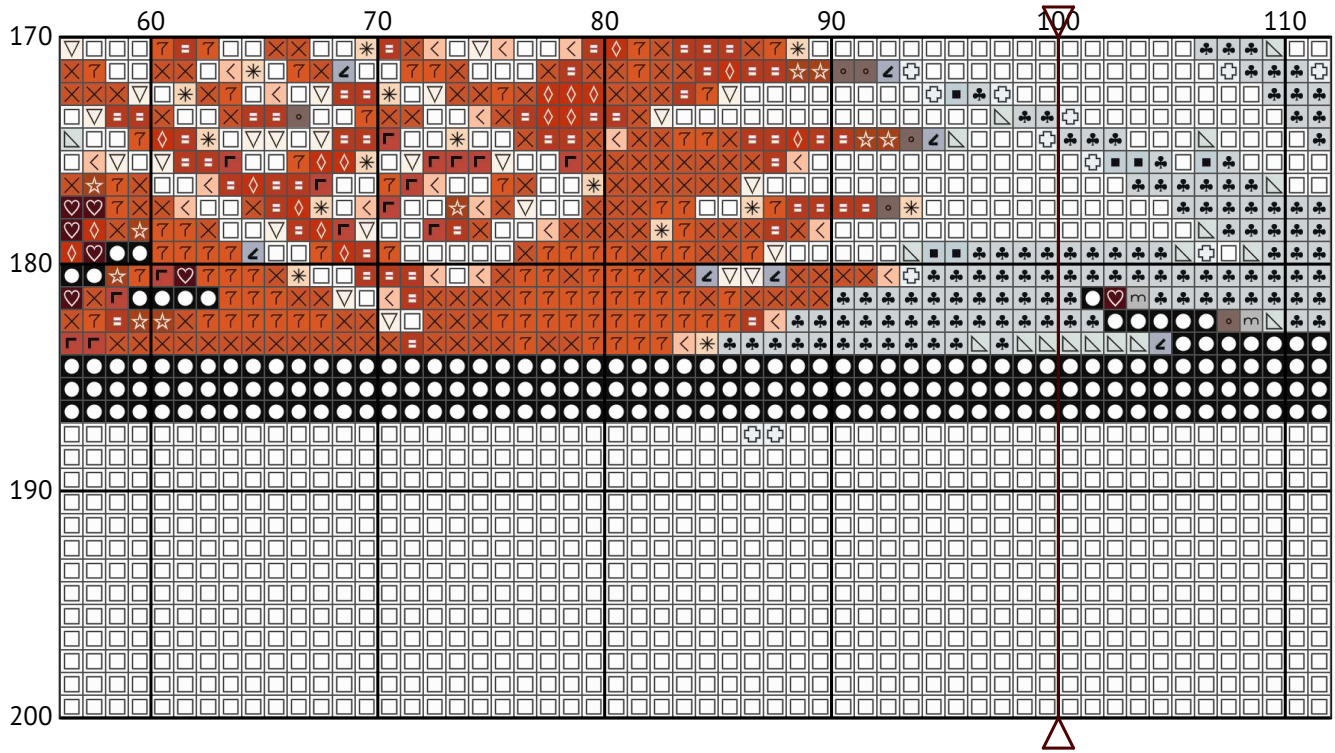
Orange fox sitting with its tail curled around its side



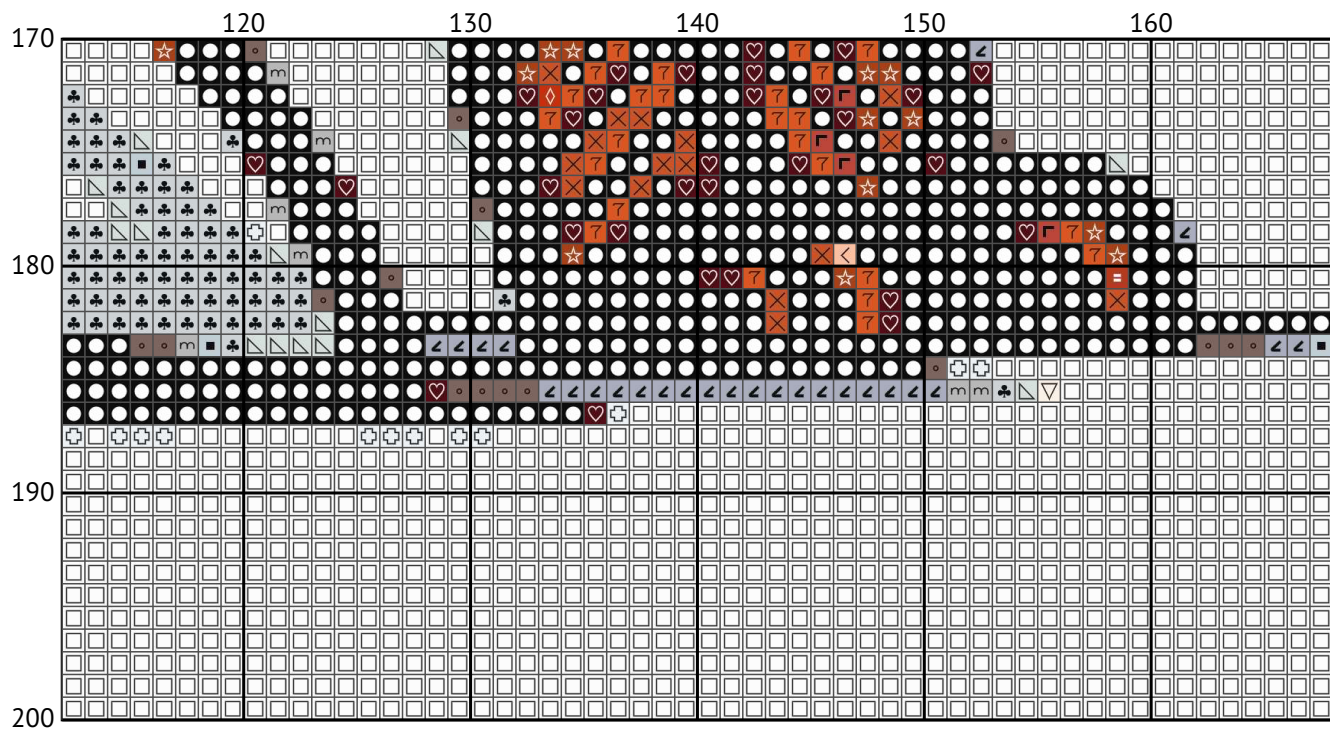
Orange fox sitting with its tail curled around its side



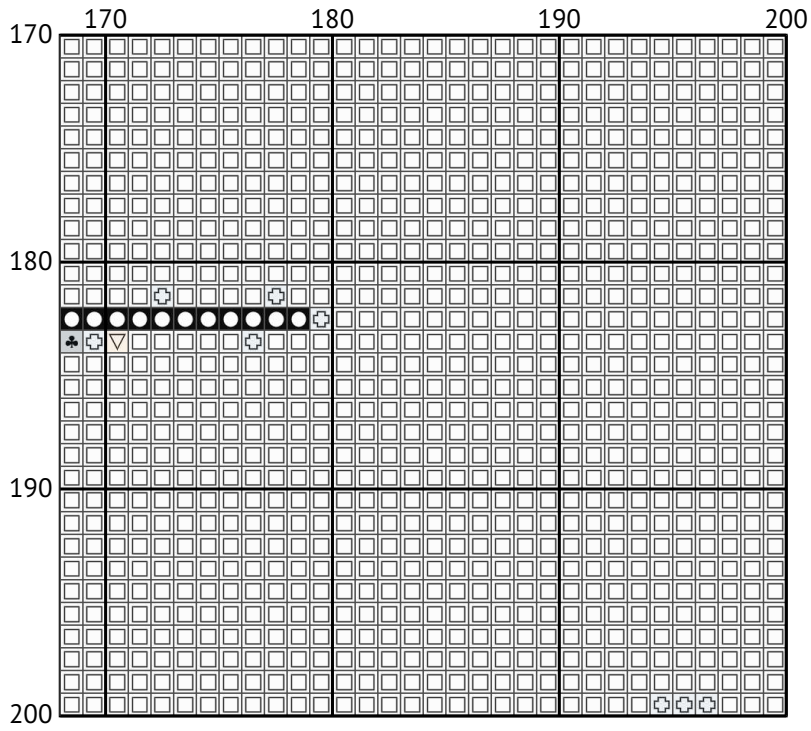
Orange fox sitting with its tail curled around its side



Orange fox sitting with its tail curled around its side



Orange fox sitting with its tail curled around its side



Floss list for crosses

To calculate the dimensions of a cross stitch design in centimeters or inches for a pattern size like "200 x 200 stitches," it's essential to know the fabric's count. The fabric count indicates the number of stitches that fit into one inch (or centimeter).

Here's the method to determine the size:

Identify the Fabric Count: Check the fabric packaging to find this information. Common fabric counts include 11, 14, 16, 18, 22, etc., representing the number of stitches per inch for each count.

Calculate the Size in Inches:

Divide the stitch count by the fabric count.





For instance, with a 200 x 200 stitch pattern on 14-count fabric, the calculation is $200 \text{ stitches} / 14 \text{ stitches per inch} = \text{approximately } 14.29 \text{ inches}$ for each side.

Calculate the Size in Centimeters:

Convert inches to centimeters, knowing there are about 2.54 centimeters in an inch.

For the example given, $14.29 \text{ inches} * 2.54 \text{ cm/inch} = \text{approximately } 36.27 \text{ centimeters}$ on each side.

Keep in mind, the greater the fabric count, the smaller each stitch will be, resulting in a more compact design. On the other hand, a lower fabric count leads to larger stitches and a bigger overall design. Make sure to include extra fabric margins for framing or finishing your project.

N	Symbol	Number	Name	Stitches
1			DMC BLANK White	173
2			DMC 01 Tin - White	95
3			DMC 168 Pewter - Very Light	157
4			DMC 301 Mahogany - Medium	232
5			DMC 310 Black	3656
6			DMC 356 Terra Cotta - Medium	157
7			DMC 415 Pearl Gray	257
8			DMC 451 Shell Gray - Dark	216
9			DMC 720 Orange Spice - Dark	890
10			DMC 762 Pearl Gray - Very Light	594
11			DMC 814 Garnet - Dark	444
12			DMC 819 Baby Pink - Light	420
13			DMC 921 Copper	905
14			DMC 967 Apricot - Very Light	306
15			DMC 3756 Baby Blue - Ultra Very Light	162

Orange fox sitting with its tail curled around its side

N	Symbol	Number	Name	Stitches
16			DMC 3774 Desert Sand - Very Light	227
17			DMC 3776 Mahogany - Light	1509
18			DMC 3853 Autumn Gold - Dark	631
19			DMC B5200 Snow White	28969