

# Dont Give Up On Your Dreams

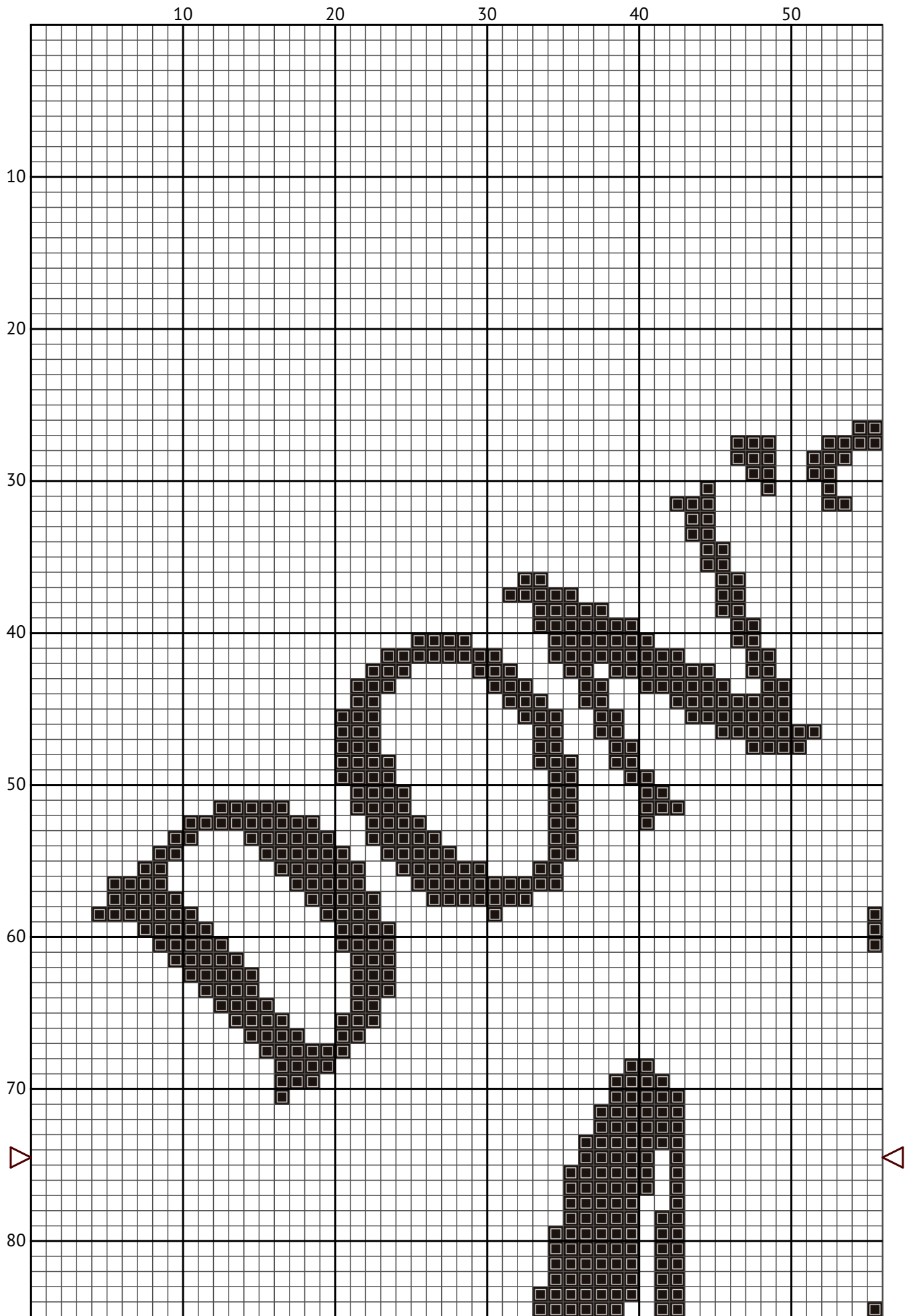
Cross stitch chart from [patterns.stitchingsecrets.com](https://patterns.stitchingsecrets.com)

---



Design size: 200 x 149 stitches

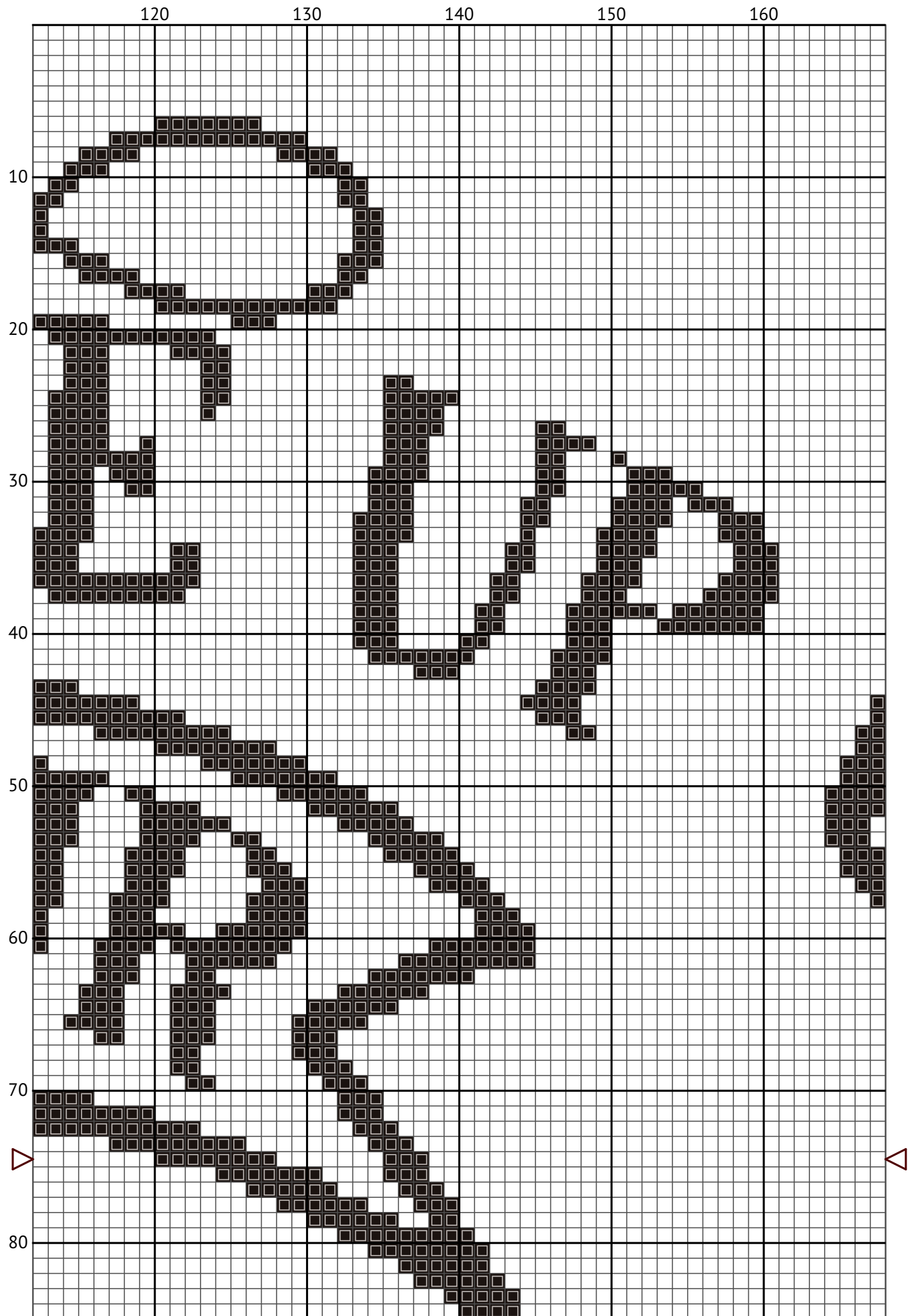
# Dont Give Up On Your Dreams



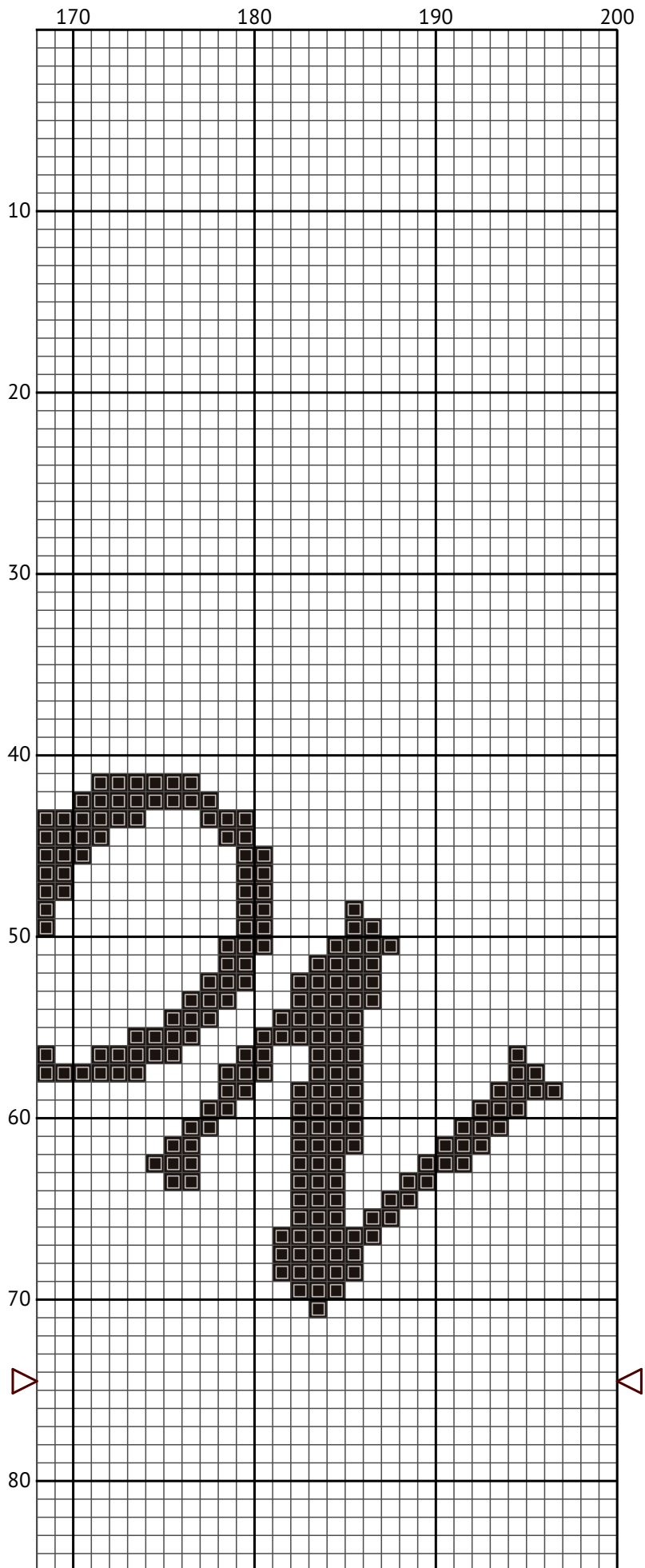
Dont Give Up On Your Dreams



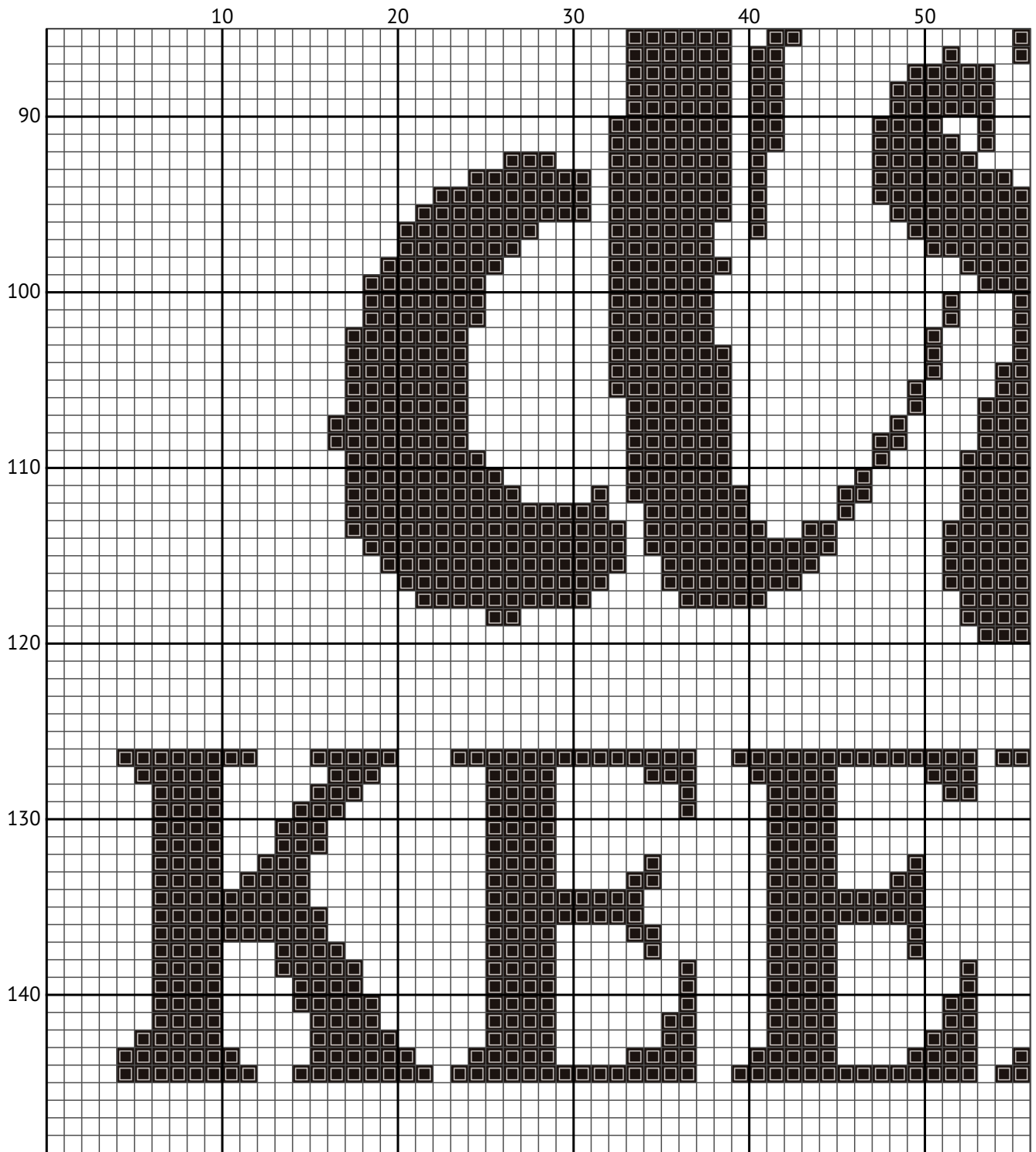
# Dont Give Up On Your Dreams



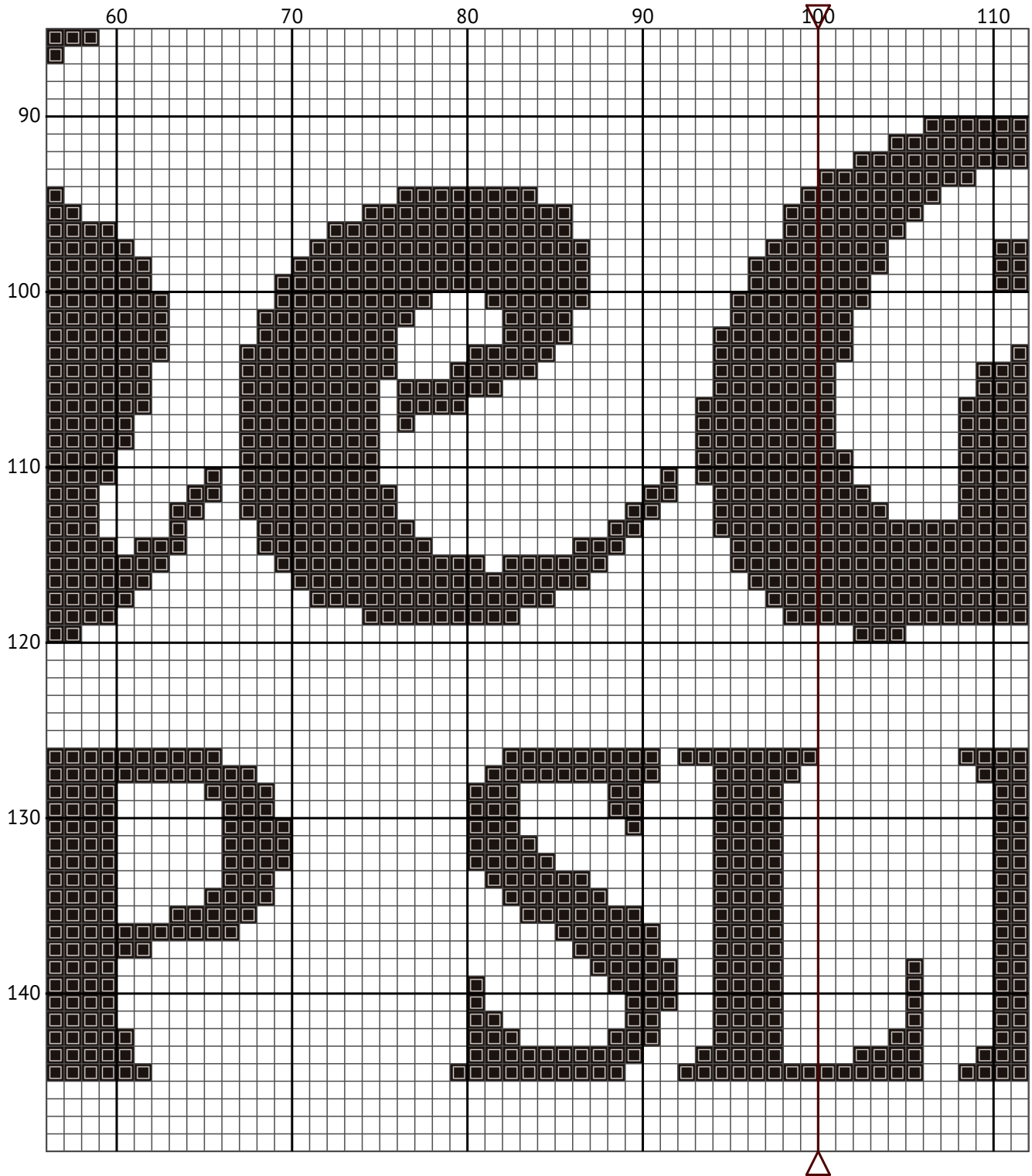
# Dont Give Up On Your Dreams



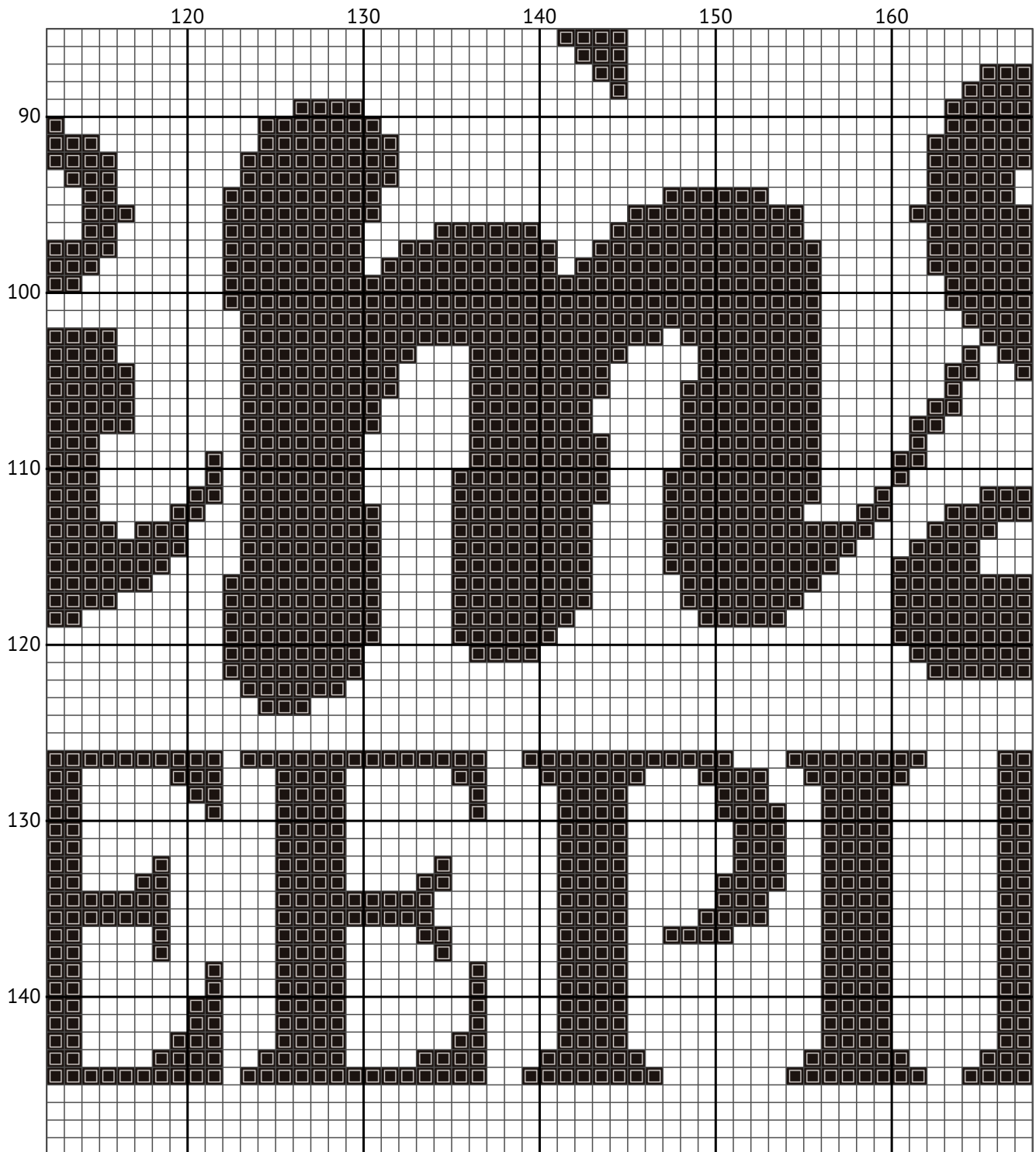
# Dont Give Up On Your Dreams



Dont Give Up On Your Dreams

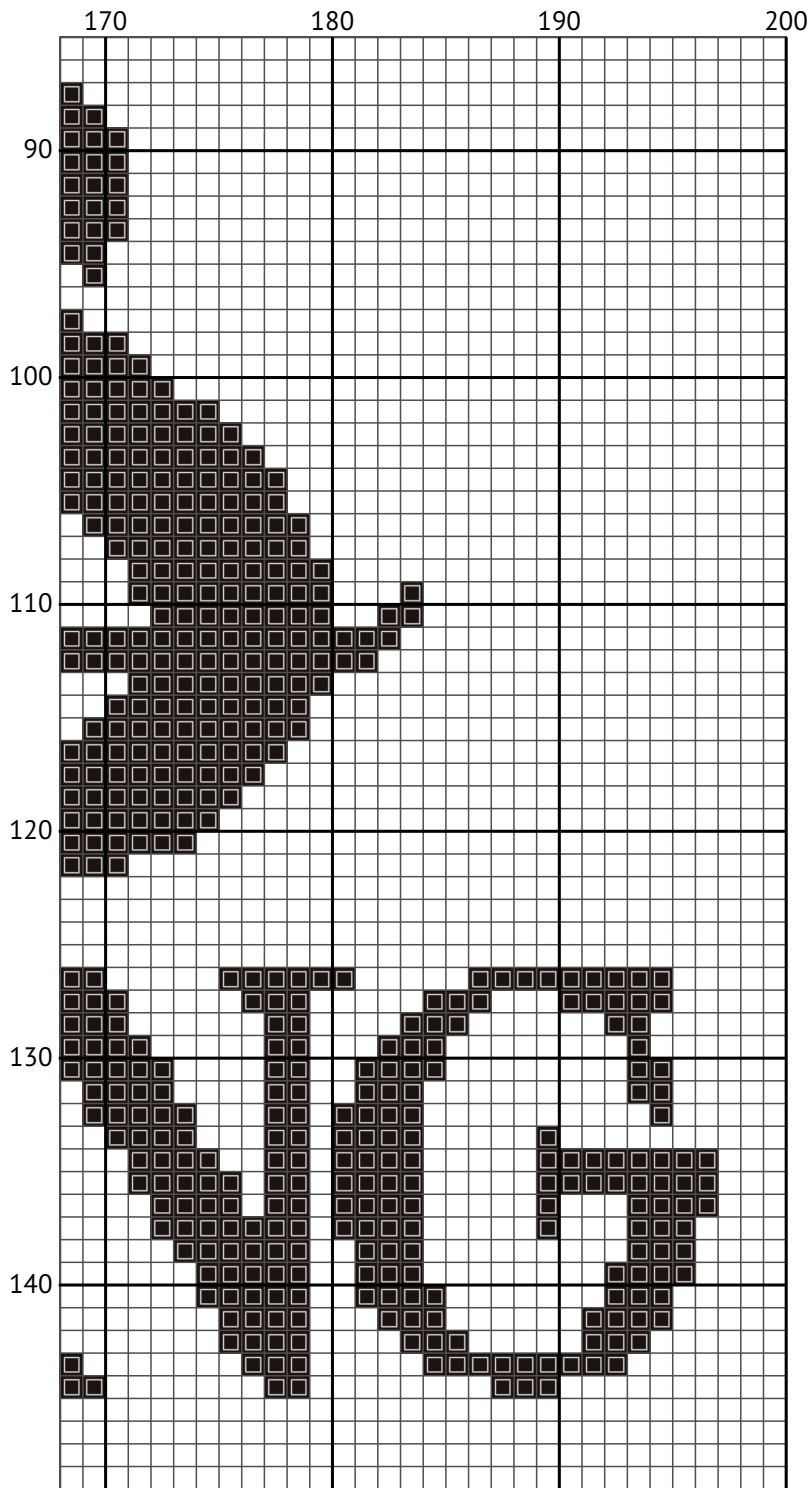


Dont Give Up On Your Dreams





# Dont Give Up On Your Dreams



## Floss list for crosses

## How to Convert Cross Stitch Pattern Sizes: A Step-by-Step Guide

When you download a cross stitch pattern, you'll often find the design size expressed in stitches, such as "Design size: 200 x 149 stitches." To determine the physical dimensions of your design, you need to know the fabric's thread count, typically referred to as the "count." In this guide, we'll walk you through converting stitch count to inches and centimeters for a 14-count Aida fabric.

## Understanding Fabric Count

The fabric count indicates how many threads (or squares) there are per inch. For example, a 14-count Aida fabric has 14 stitches per inch. This information is crucial for calculating the physical size of your cross stitch design.

## Example Calculation for 200 x 149 Stitches on 14-Count Aida

Given:

Design size: 200 x 149 stitches

Fabric count: 14-count Aida

Steps to Calculate:

Calculate the size in inches:

Width:  $200 \text{ stitches} \div 14 \text{ stitches per inch} = 14.29 \text{ inches}$

Height:  $149 \text{ stitches} \div 14 \text{ stitches per inch} = 10.64 \text{ inches}$

Convert inches to centimeters (1 inch = 2.54 cm):

Width:  $14.29 \text{ inches} \times 2.54 \text{ cm/inch} = 36.30 \text{ cm}$

Height:  $10.64 \text{ inches} \times 2.54 \text{ cm/inch} = 27.04 \text{ cm}$

Summary of Dimensions for 14-Count Aida



Width: 14.29 inches (36.30 cm)

Height: 10.64 inches (27.04 cm)

Conclusion

By following these steps, you can easily convert any design size in stitches to its physical dimensions in inches or centimeters based on the fabric count you are using. This ensures that your finished cross stitch piece will fit perfectly in your chosen frame or display area.

Happy stitching!

N	Symbol	Number	Name	Stitches
1	 	DMC 3371	Black Brown	6850