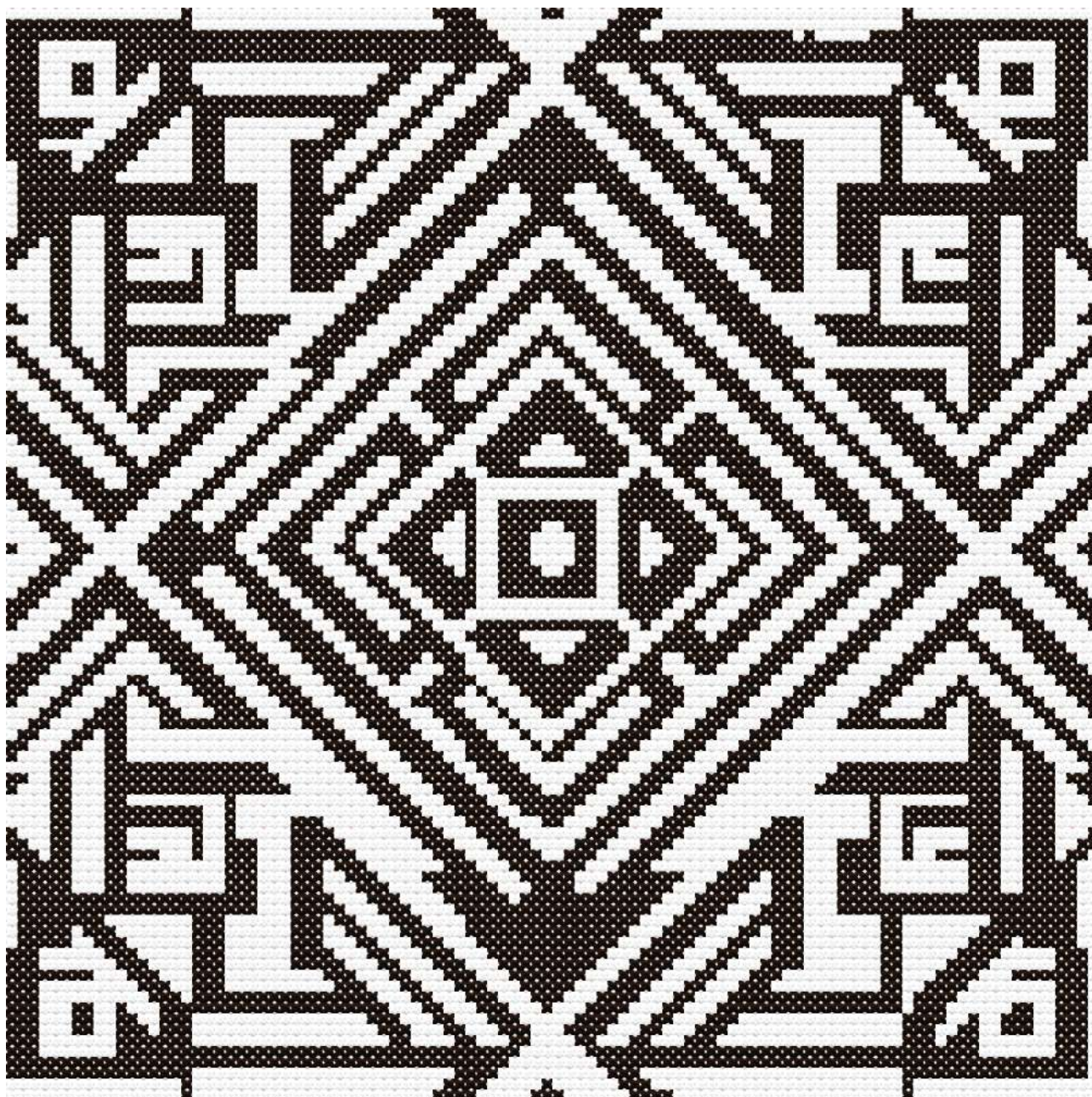


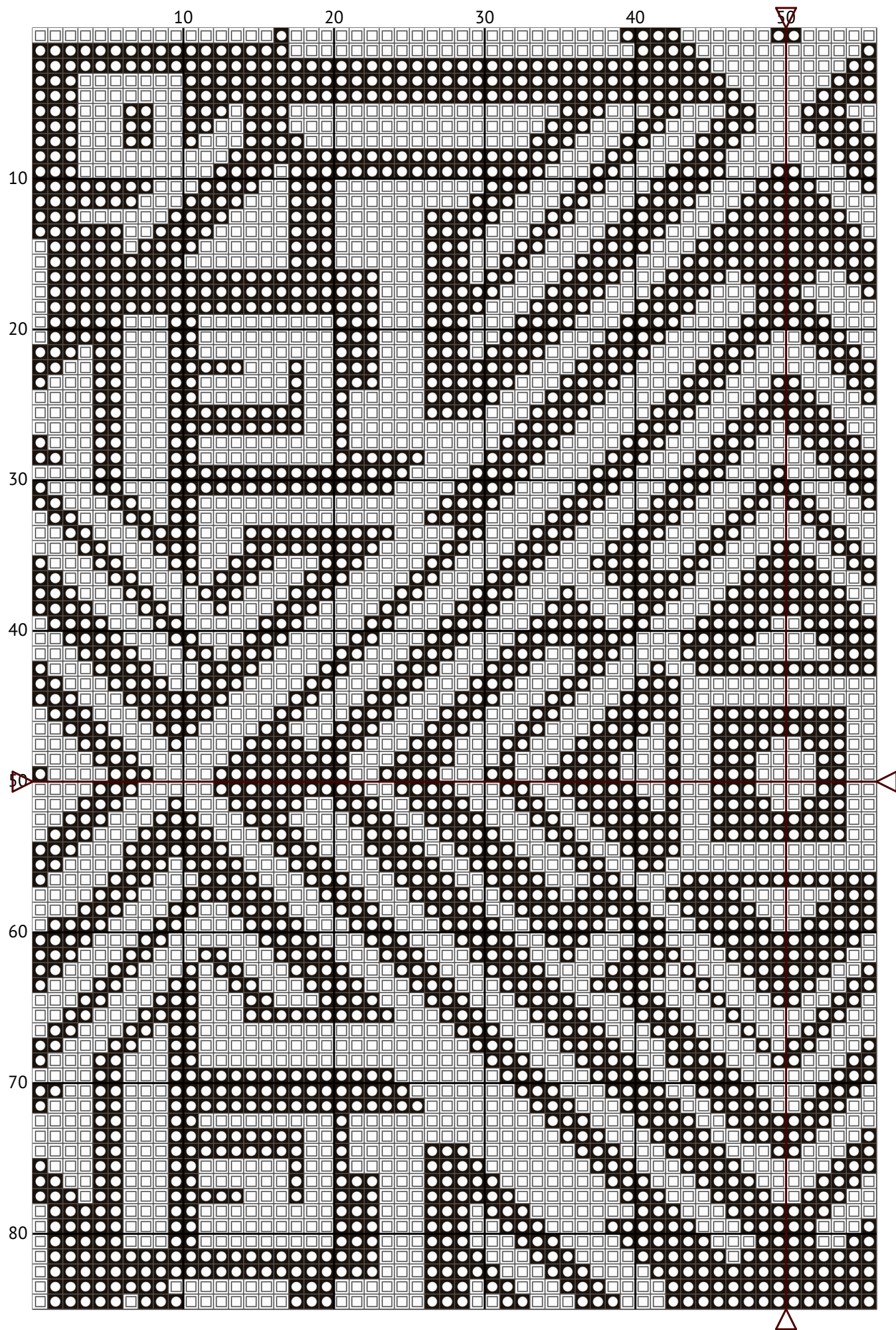
Geometric ornament pattern 38

Cross stitch chart

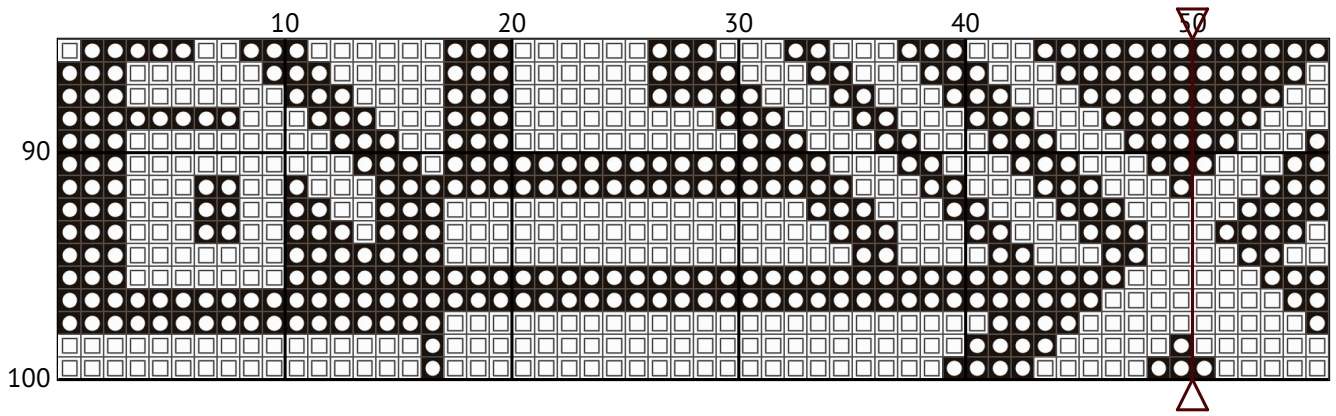


Design size: 100 x 100 stitches

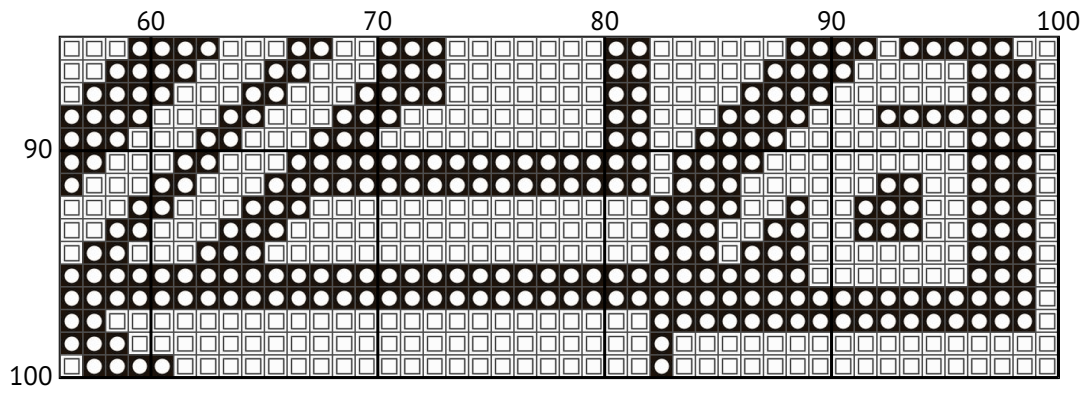
Geometric ornament pattern 38



Geometric ornament pattern 38



Geometric ornament pattern 38



Floss list for crosses

To determine the size of a cross stitch design in centimeters or inches when you have the dimensions in stitches (like "100 x 100 stitches"), you need to know the count of the fabric you're using. The count of the fabric refers to how many stitches you can make per inch (or per centimeter).

Here's how you can calculate the size:

Identify the Fabric Count: This is usually indicated on the fabric packaging. Common counts are 11, 14, 16, 18, 22, etc., which means 11, 14, 16, 18, 22 stitches per inch, respectively.

Calculate the Size in Inches:

Divide the number of stitches by the fabric count.




For example, if your design is 100 x 100 stitches on 14-count fabric, the size would be $100 \text{ stitches} / 14 \text{ stitches per inch} = \text{approximately } 7.14 \text{ inches on each side}$.

Calculate the Size in Centimeters:

There are approximately 2.54 centimeters in an inch.

So, using the example above, $7.14 \text{ inches} * 2.54 \text{ cm/inch} = \text{approximately } 18.14 \text{ centimeters on each side}$.

Remember, the higher the count number, the smaller the stitches will be, and thus, the design will be more compact. Conversely, a lower count number means larger stitches and a larger design. Always ensure you have enough fabric around the design for framing or finishing.

N	Symbol	Number	Name	Stitches
1	 	DMC 3371	Black Brown	5134
2	 	DMC B5200	Snow White	4866