

# An owl perched on a branch

Cross stitch chart from [patterns.stitchingsecrets.com](https://patterns.stitchingsecrets.com)

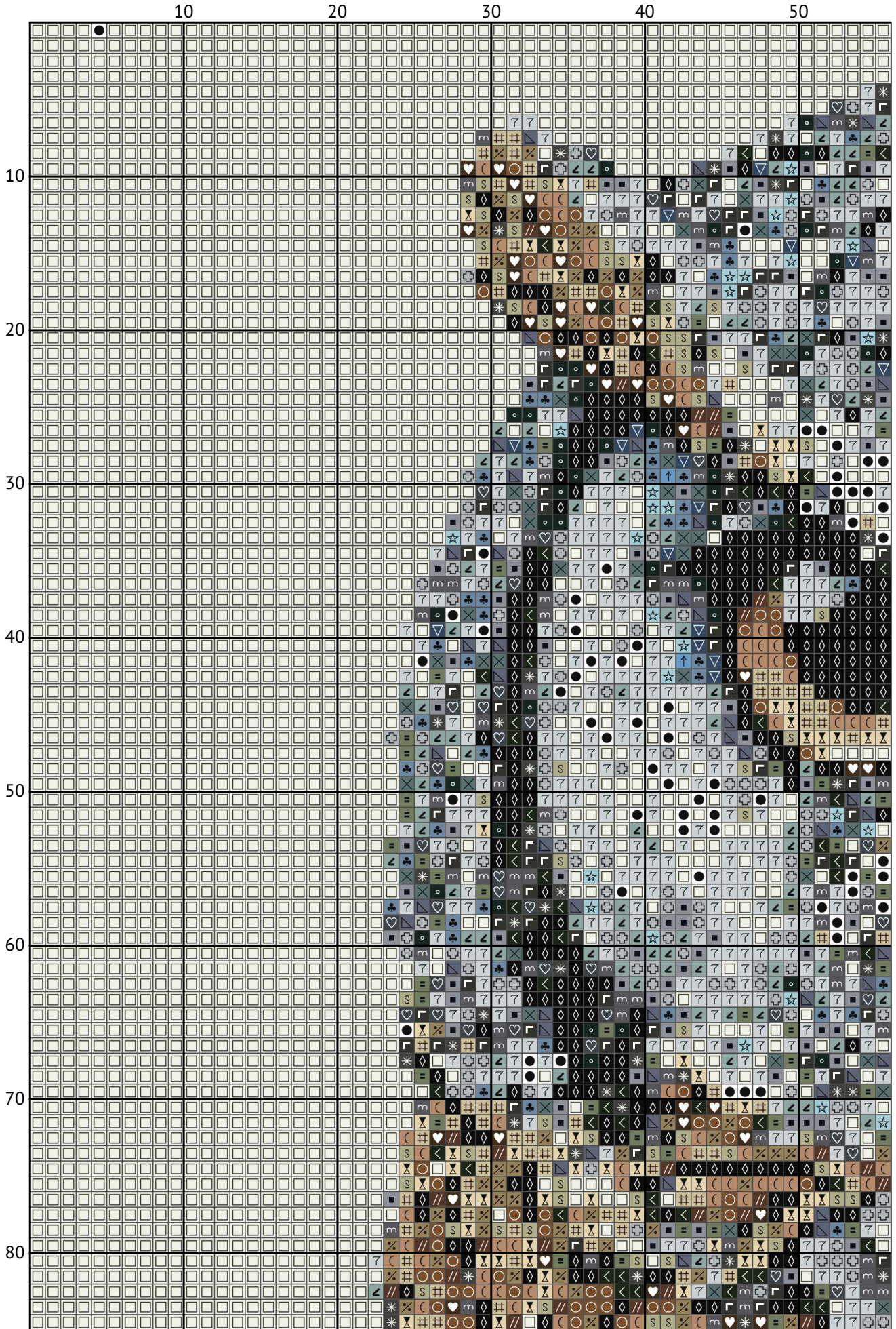
---



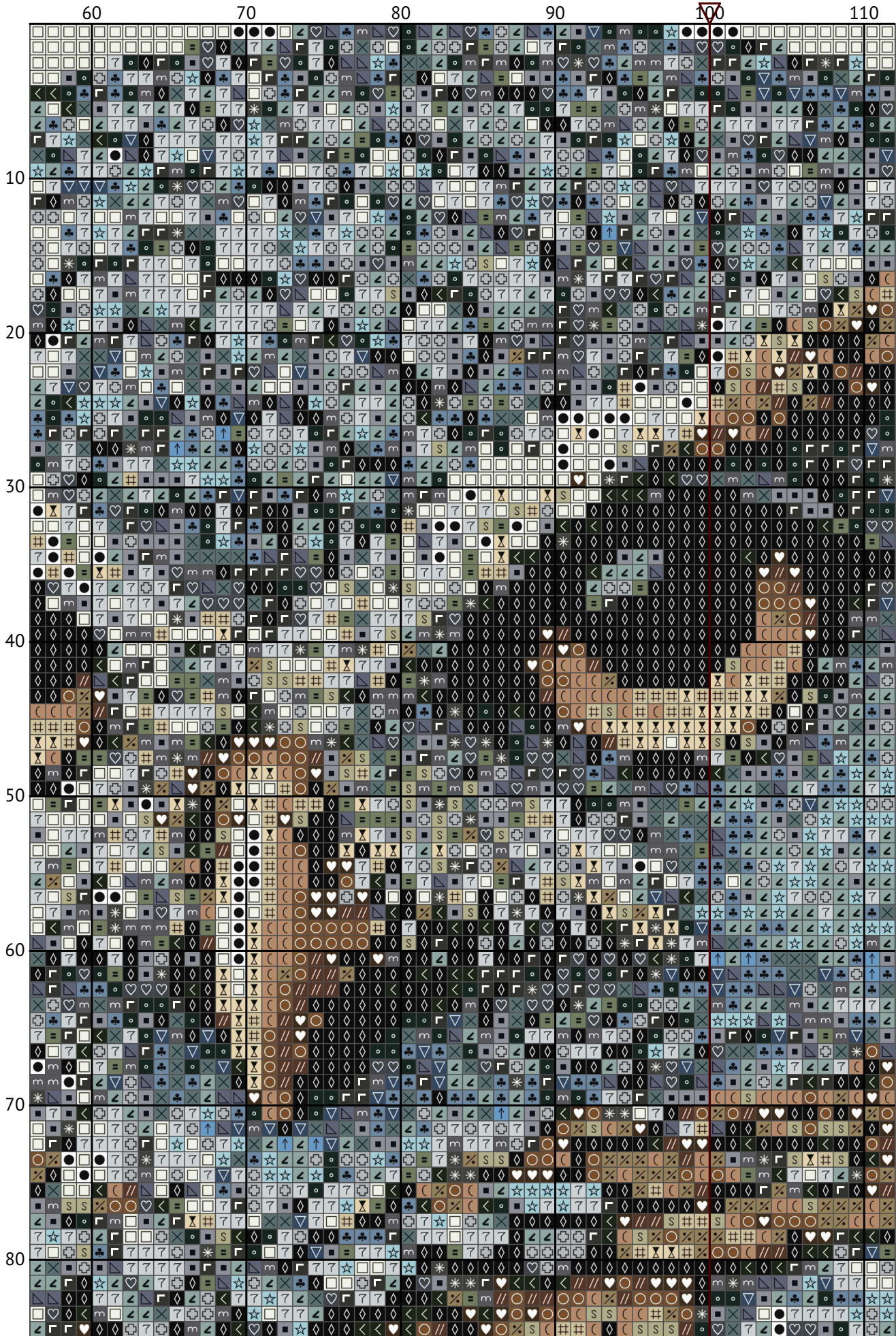
Design size: 200 x 200 stitches



An owl perched on a branch

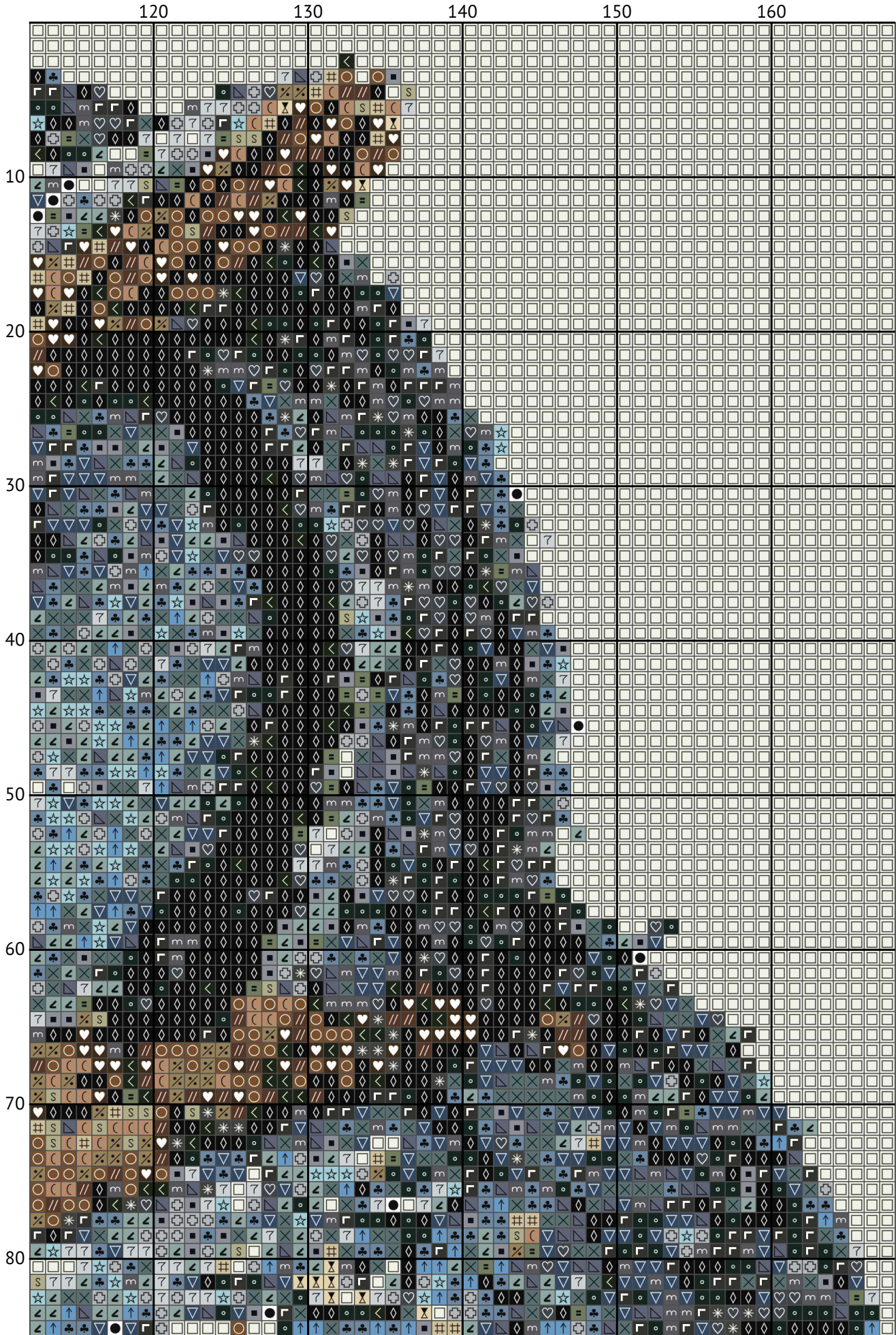


An owl perched on a branch

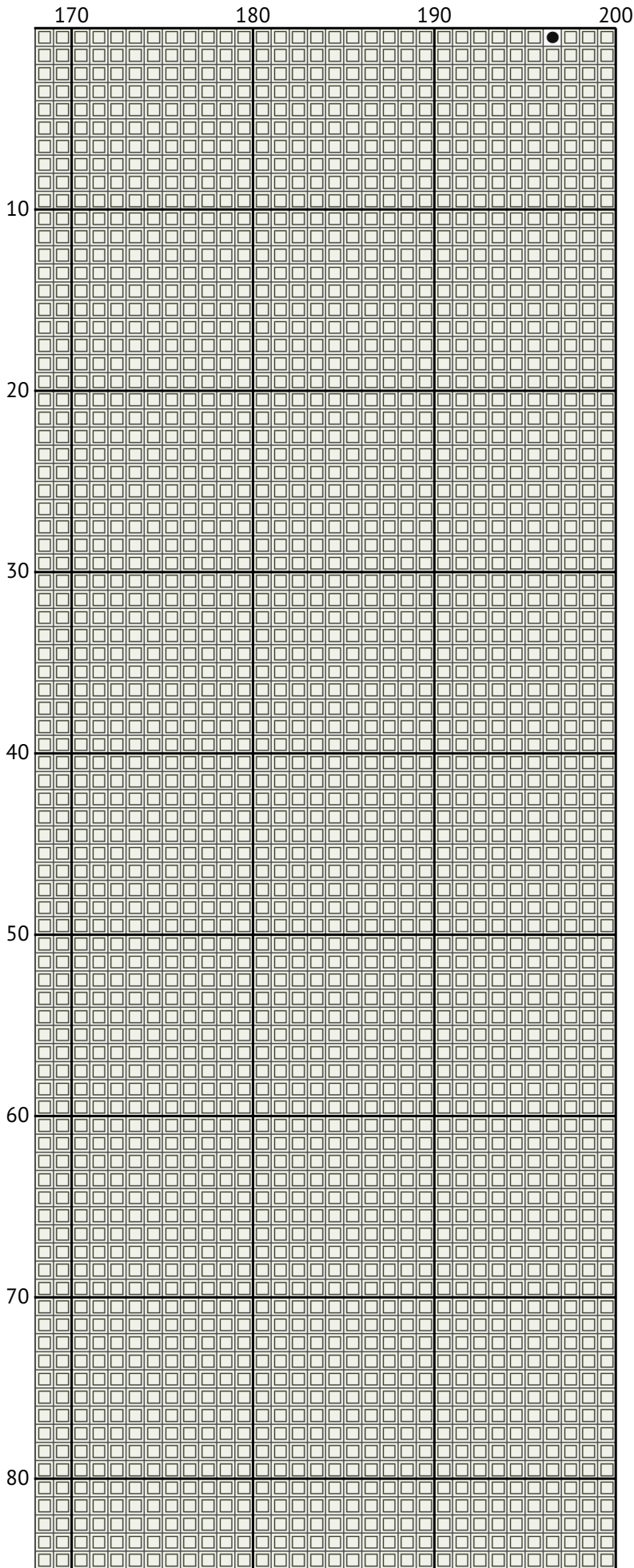




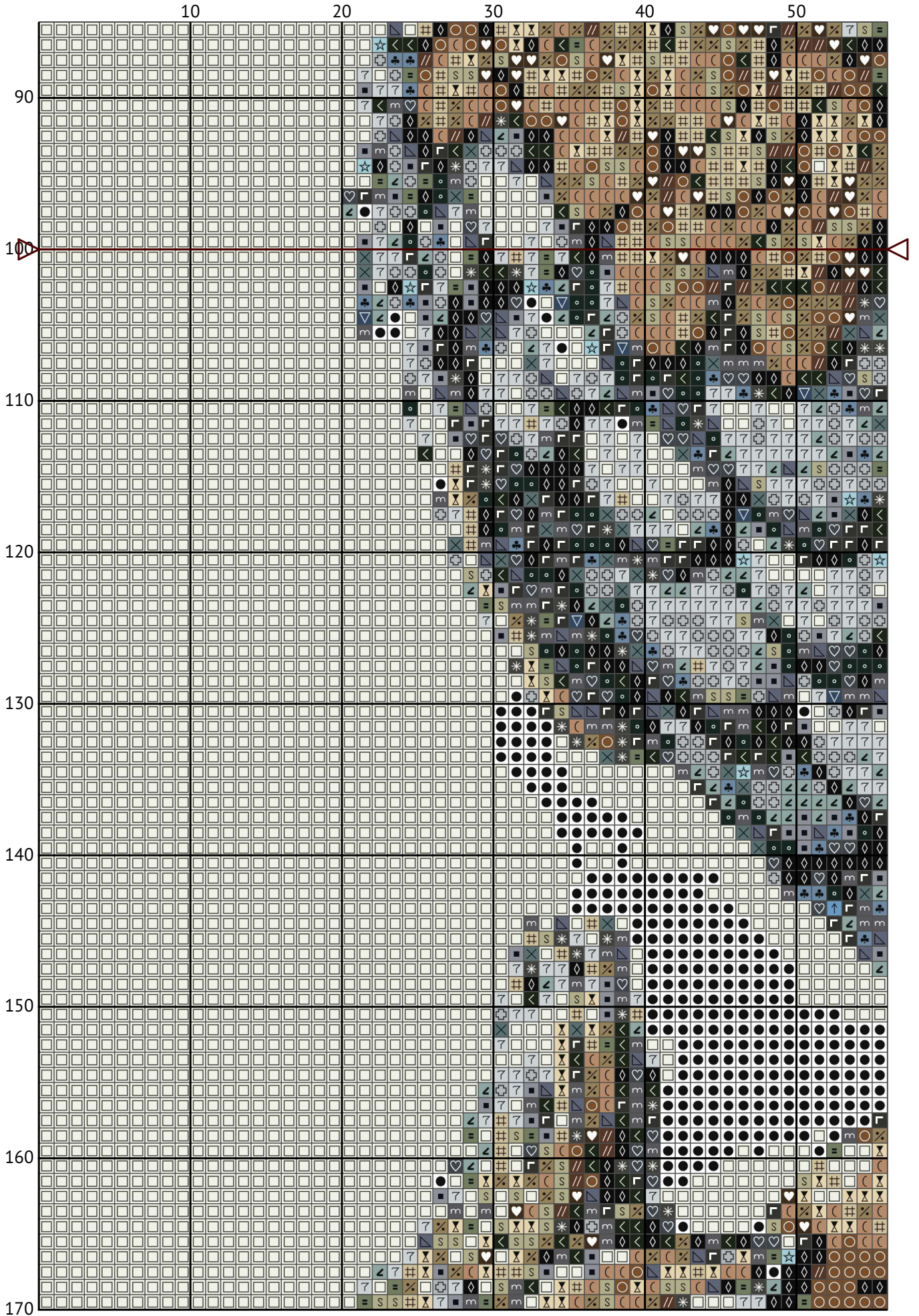
An owl perched on a branch



An owl perched on a branch

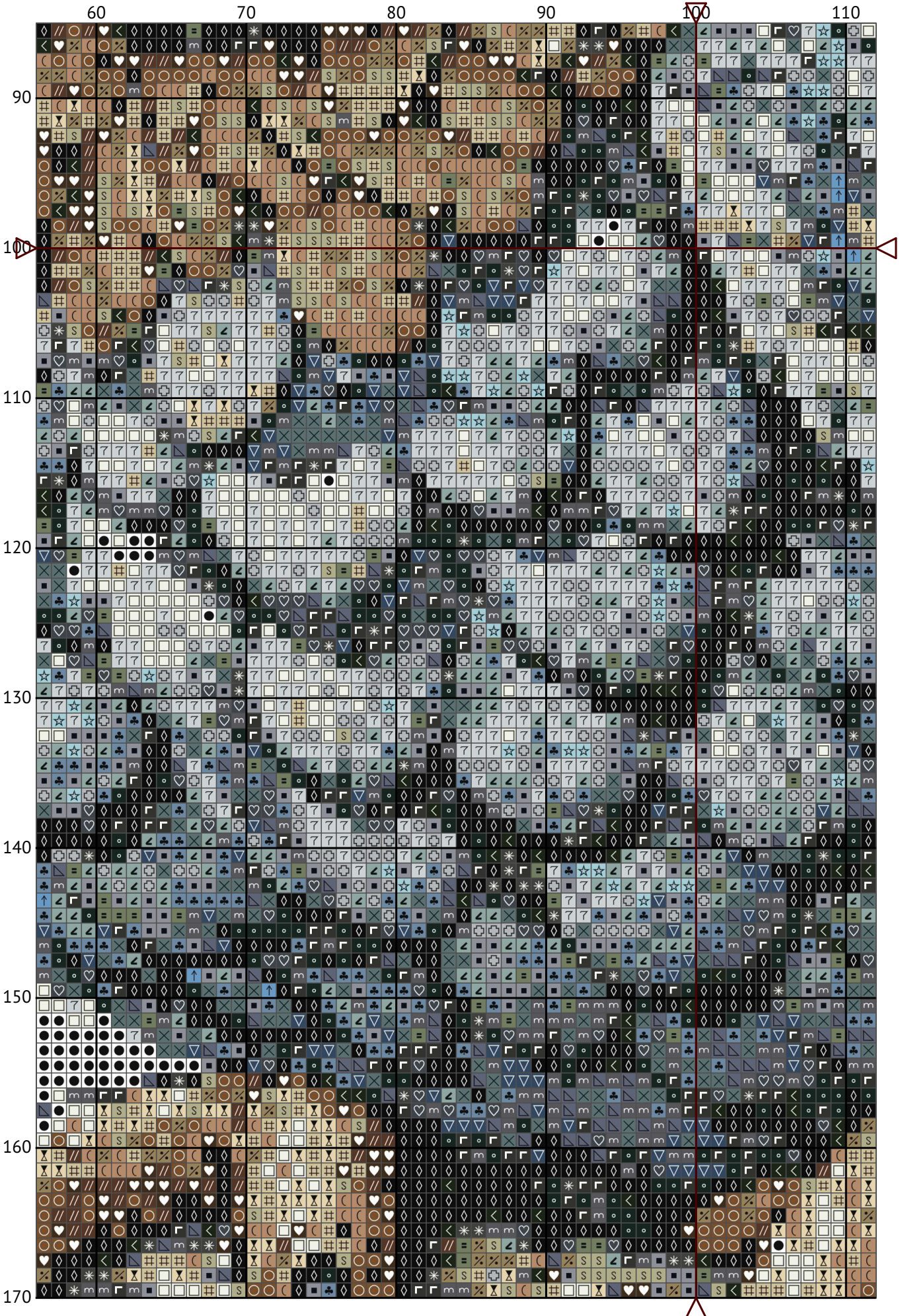


An owl perched on a branch

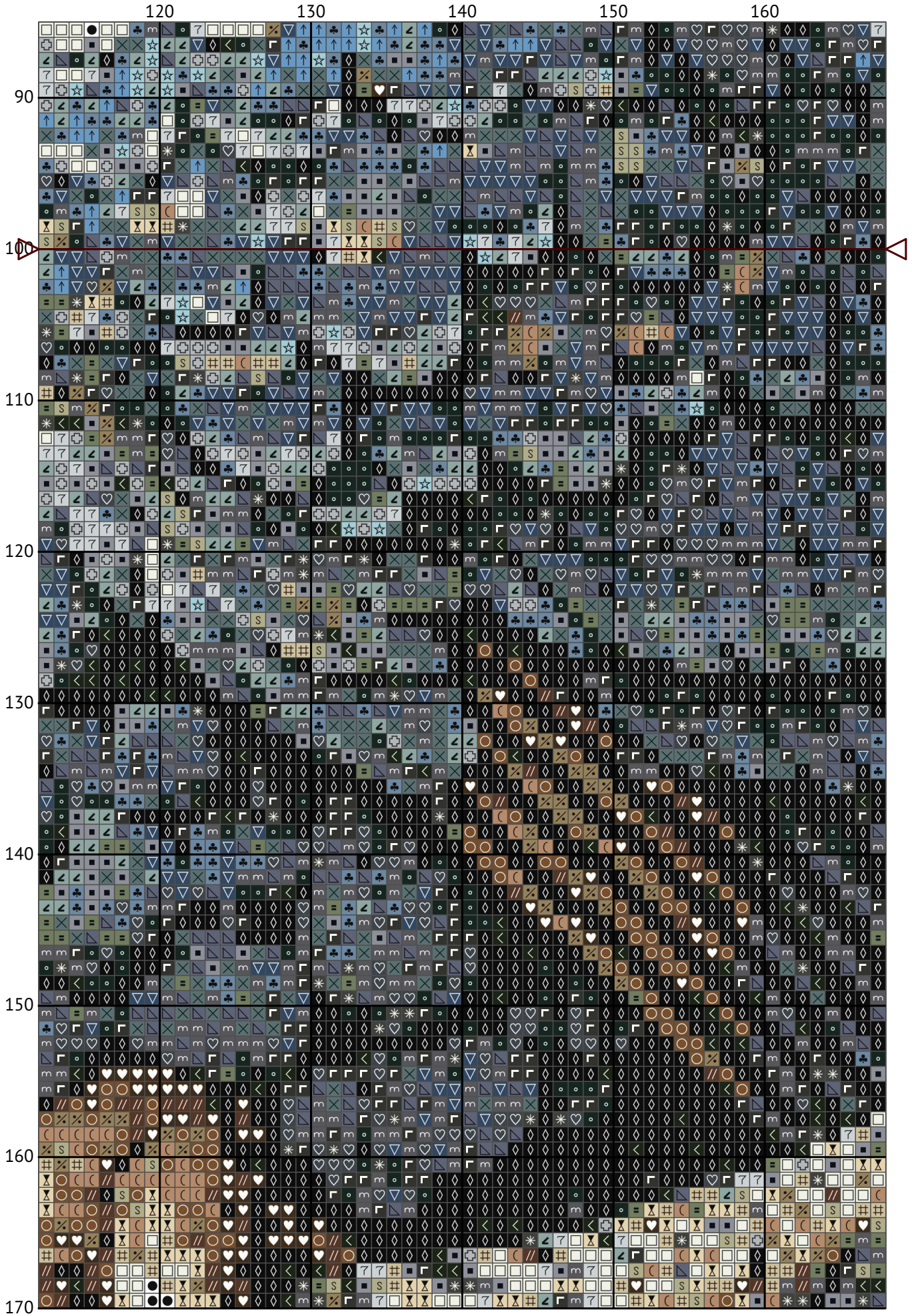




An owl perched on a branch

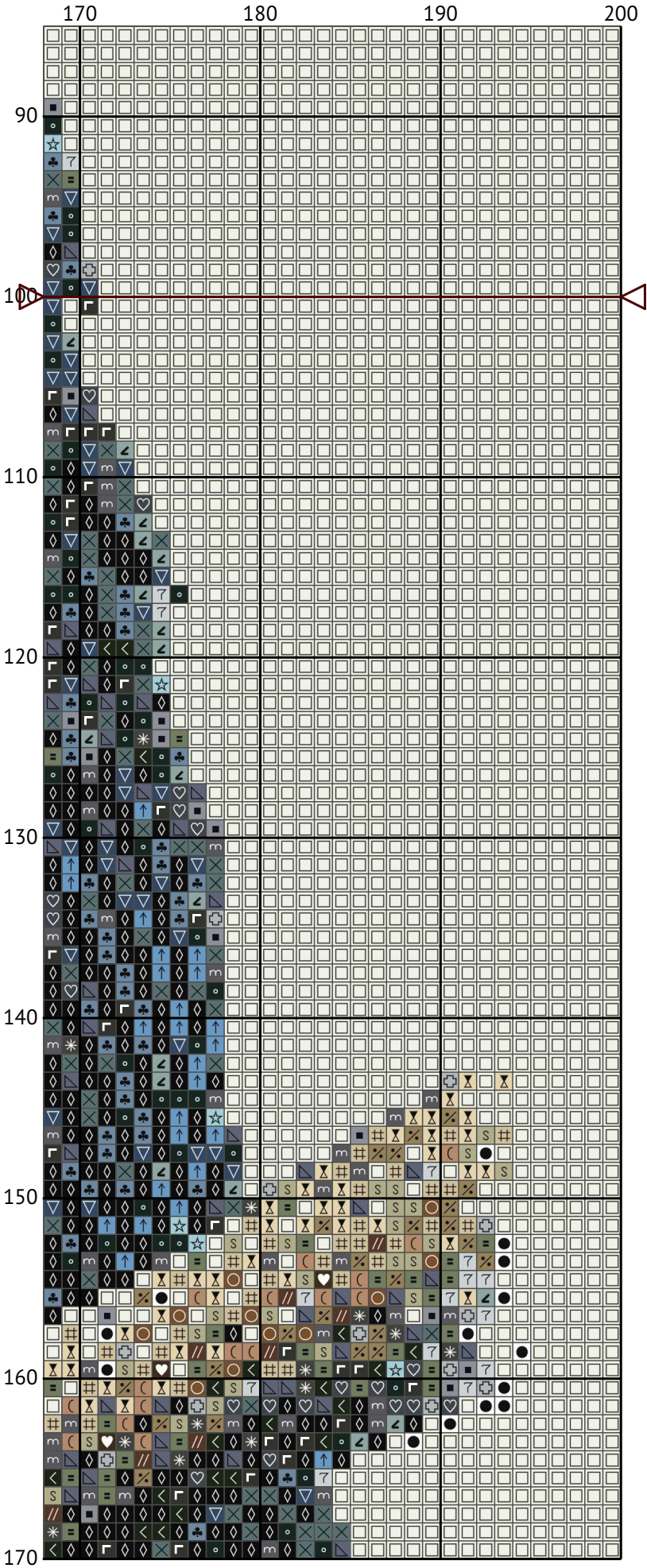


An owl perched on a branch

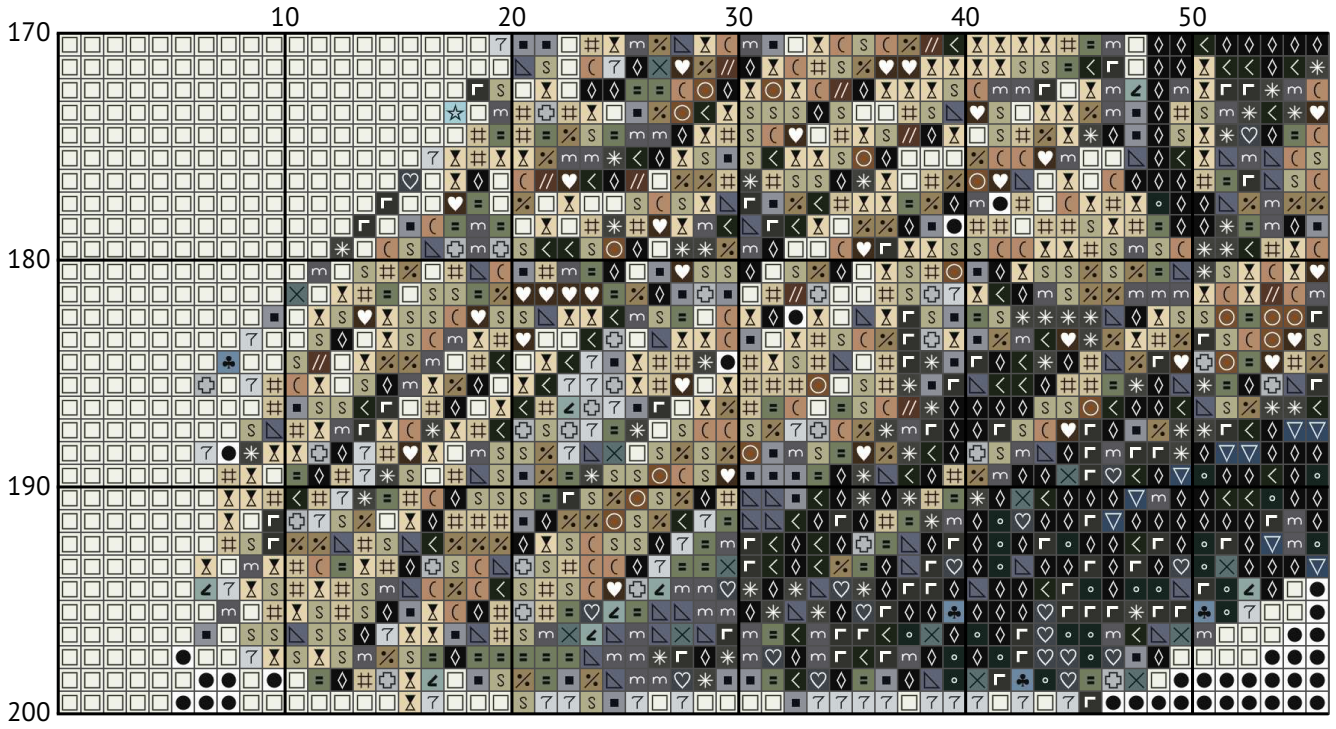




An owl perched on a branch

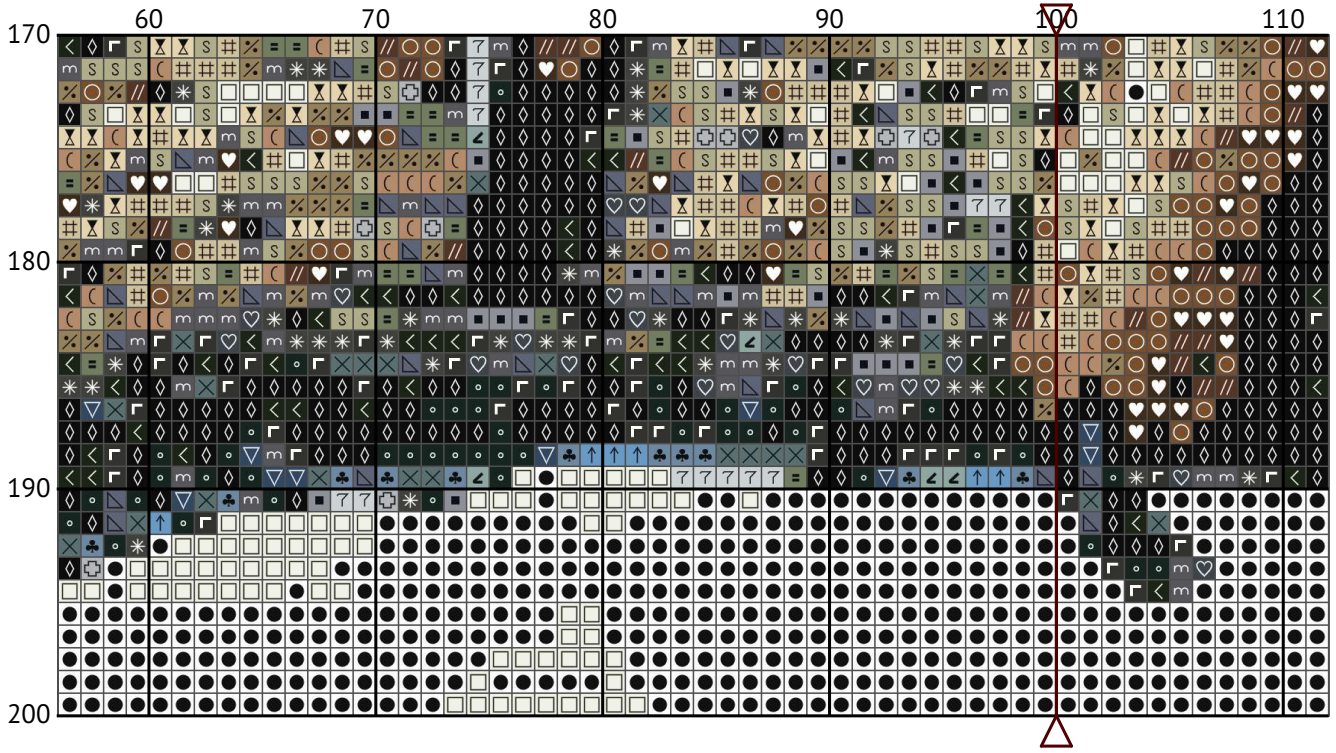


An owl perched on a branch

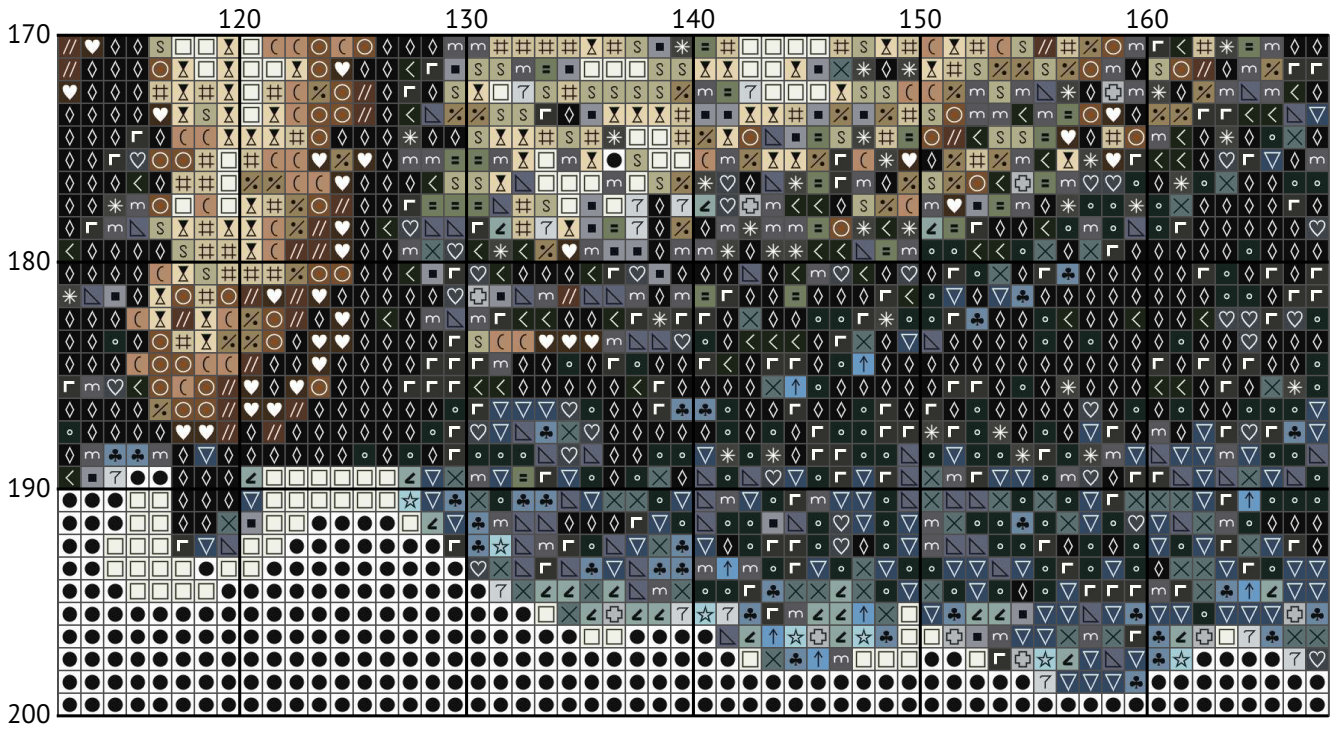




An owl perched on a branch

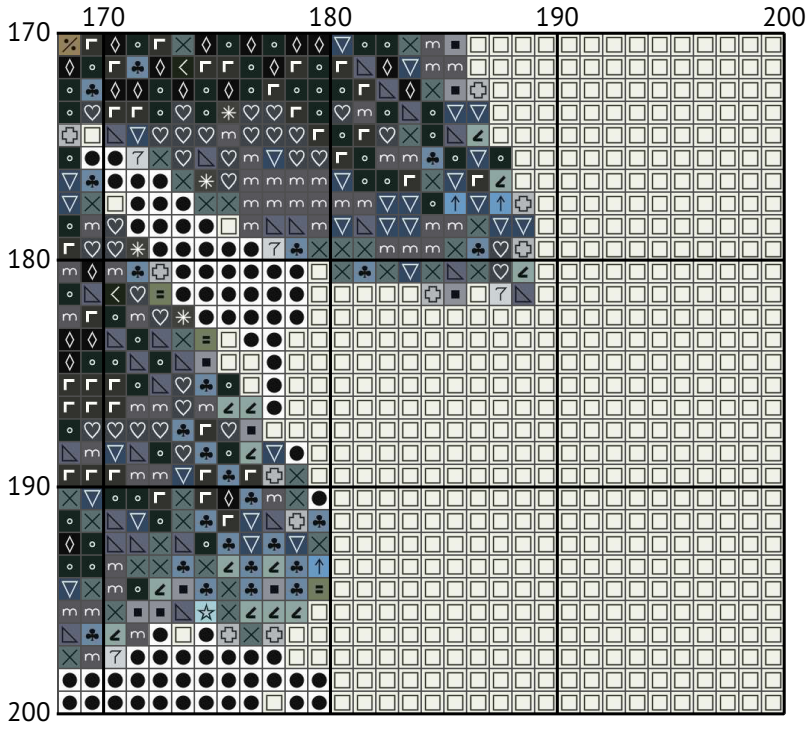


An owl perched on a branch





An owl perched on a branch



## Floss list for crosses

### How to Convert Cross Stitch Pattern Sizes: A Step-by-Step Guide

When you download a cross stitch pattern, you'll often find the design size expressed in stitches, such as "Design size: 200 x 200 stitches." To determine the physical dimensions of your design, you need to know the fabric's thread count, typically referred to as the "count." In this guide, we'll walk you through converting stitch count to inches and centimeters for a 14-count Aida fabric.

#### Understanding Fabric Count

The fabric count indicates how many threads (or squares) there are per inch. For example, a 14-count Aida fabric has 14 stitches per inch. This information is crucial for calculating the physical size of your cross stitch design.

#### Example Calculation for 200 x 200 Stitches on 14-Count Aida

Given:

Design size: 200 x 200 stitches

Fabric count: 14-count Aida

Steps to Calculate:

Calculate the size in inches:

Width:  $200 \text{ stitches} \div 14 \text{ stitches per inch} = 14.29 \text{ inches}$

Height:  $200 \text{ stitches} \div 14 \text{ stitches per inch} = 14.29 \text{ inches}$

Convert inches to centimeters (1 inch = 2.54 cm):

Width:  $14.29 \text{ inches} \times 2.54 \text{ cm/inch} = 36.30 \text{ cm}$

Height:  $14.29 \text{ inches} \times 2.54 \text{ cm/inch} = 36.30 \text{ cm}$

Summary of Dimensions for 14-Count Aida

















Width: 14.29 inches (36.30 cm)

Height: 14.29 inches (36.30 cm)

Conclusion


























By following these steps, you can easily convert any design size in stitches to its physical dimensions in inches or centimeters based on the fabric count you are using. This ensures that your finished cross stitch piece will fit perfectly in your chosen frame or display area.

Happy stitching!

| N | Symbol  | Number  | Name                           | Stitches |
|---|---|---|--------------------------------|----------|
| 1 |  |  | DMC ECRU Ecru                  | 643      |
| 2 |  |  | DMC 02 Tin                     | 1140     |
| 3 |  |  | DMC 03 Tin - Medium            | 960      |
| 4 |  |  | DMC 04 Tin - Dark              | 1283     |
| 5 |  |  | DMC 310 Black                  | 4689     |
| 6 |  |  | DMC 413 Pewter Gray - Dark     | 800      |
| 7 |  |  | DMC 414 Steel Gray - Dark      | 1001     |
| 8 |  |  | DMC 500 Blue Green - Very Dark | 1321     |



An owl perched on a branch

| N  | Symbol  | Number  | Name                        | Stitches |
|----|---|---|-----------------------------|----------|
| 9  |    |  DMC 519     | Sky Blue                    | 143      |
| 10 |    |  DMC 524     | Fern Green - Very Light     | 625      |
| 11 |    |  DMC 535     | Ash Gray - Very Light       | 480      |
| 12 |    |  DMC 613     | Drab Brown - Very Light     | 749      |
| 13 |    |  DMC 762     | Pearl Gray - Very Light     | 1565     |
| 14 |    |  DMC 828     | Sky Blue - Ultra Very Light | 327      |
| 15 |    |  DMC 839     | Beige Brown - Dark          | 350      |
| 16 |    |  DMC 926     | Gray Green - Medium         | 1129     |
| 17 |    |  DMC 927     | Gray Green - Light          | 1079     |
| 18 |    |  DMC 930     | Antique Blue - Dark         | 821      |
| 19 |    |  DMC 932     | Antique Blue - Light        | 928      |
| 20 |    |  DMC 934     | Avocado Green - Black       | 694      |
| 21 |    |  DMC 3022    | Brown Gray - Medium         | 529      |
| 22 |  |  DMC 3032  | Mocha Brown - Medium        | 652      |
| 23 |  |  DMC 3781  | Mocha Brown - Dark          | 475      |
| 24 |  |  DMC 3799  | Pewter Gray - Very Dark     | 1381     |
| 25 |  |  DMC 3862  | Mocha Beige - Dark          | 712      |
| 26 |  |  DMC 3864  | Mocha Beige - Light         | 689      |
| 27 |  |  DMC B5200 | Snow White                  | 1265     |
| 28 |  |  DMC 3865  | Winter White                | 13570    |