

Bunnies with decorative egg bodies and floral patterns.

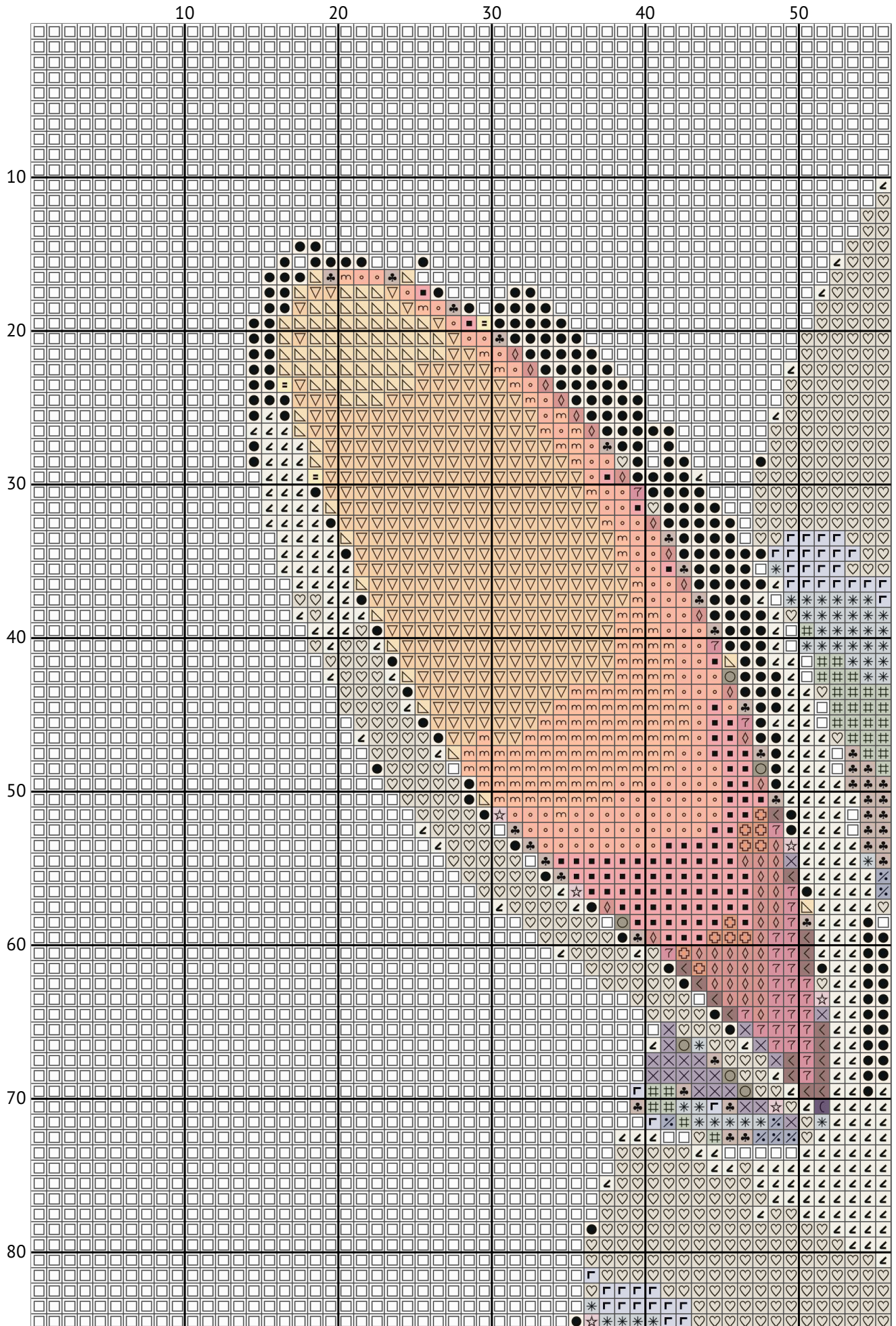
Cross stitch patterns from csp.beehiiv.com



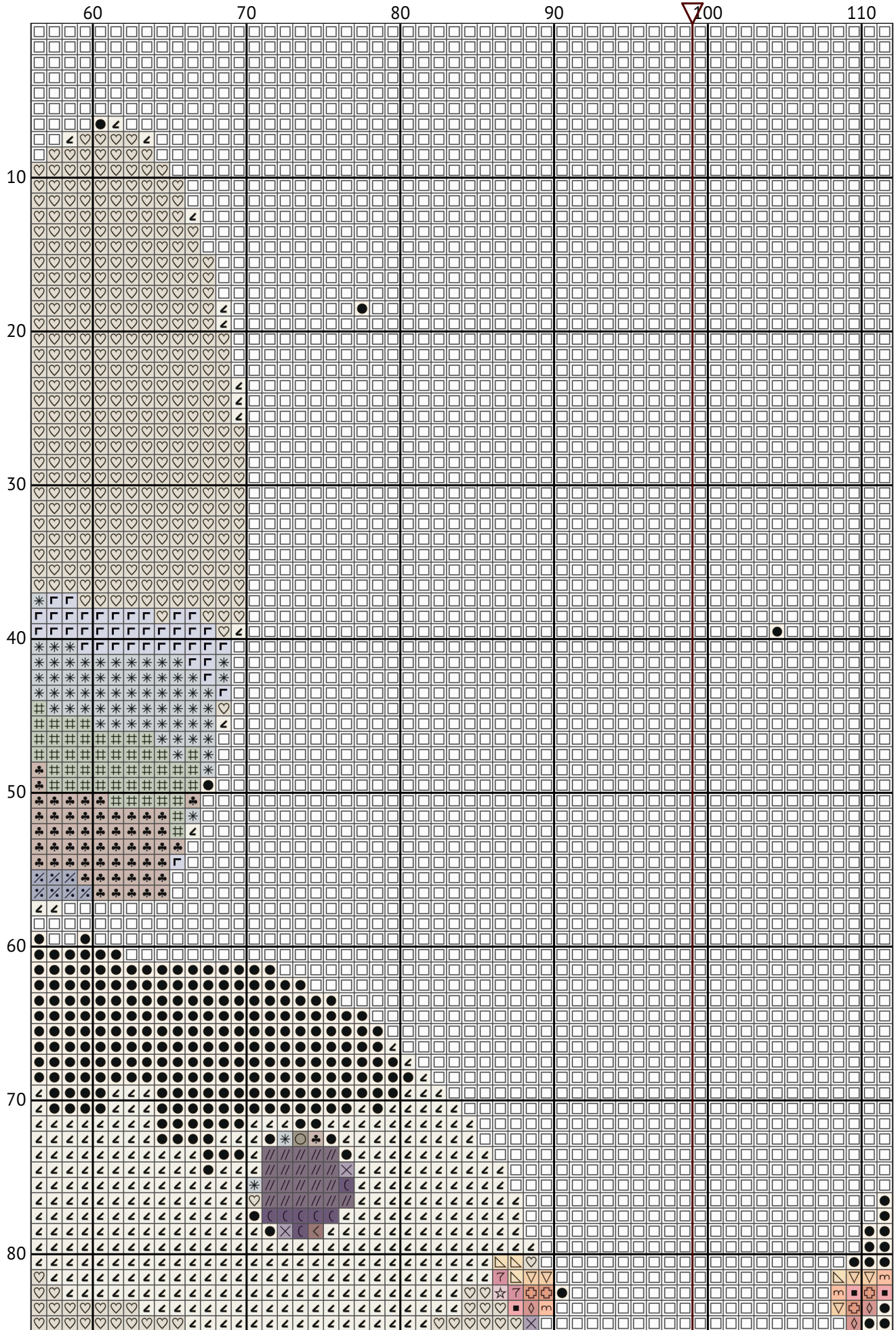
Design size: 198 x 200 stitches

Chart imported from image

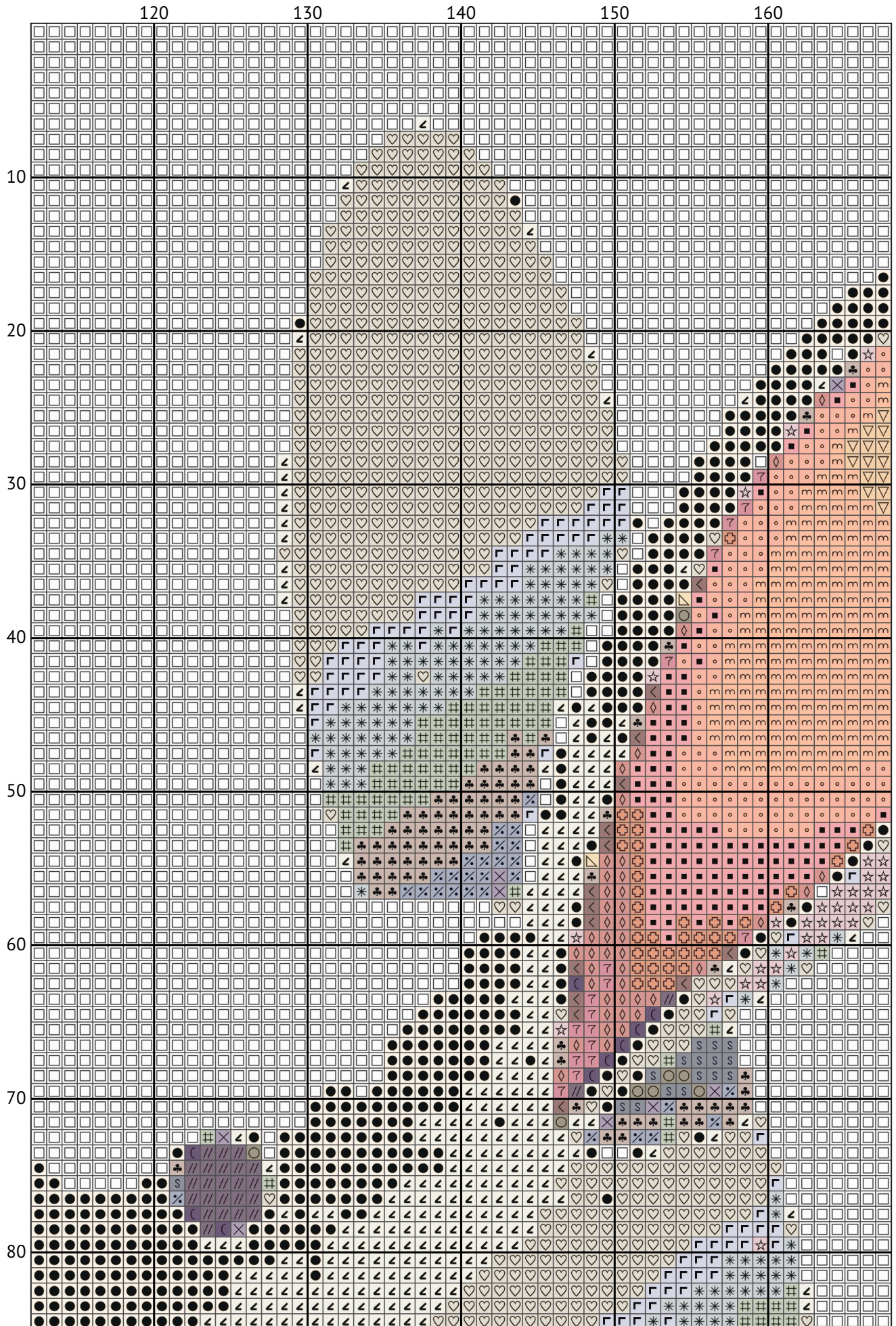
Bunnies with decorative egg bodies and floral patterns.



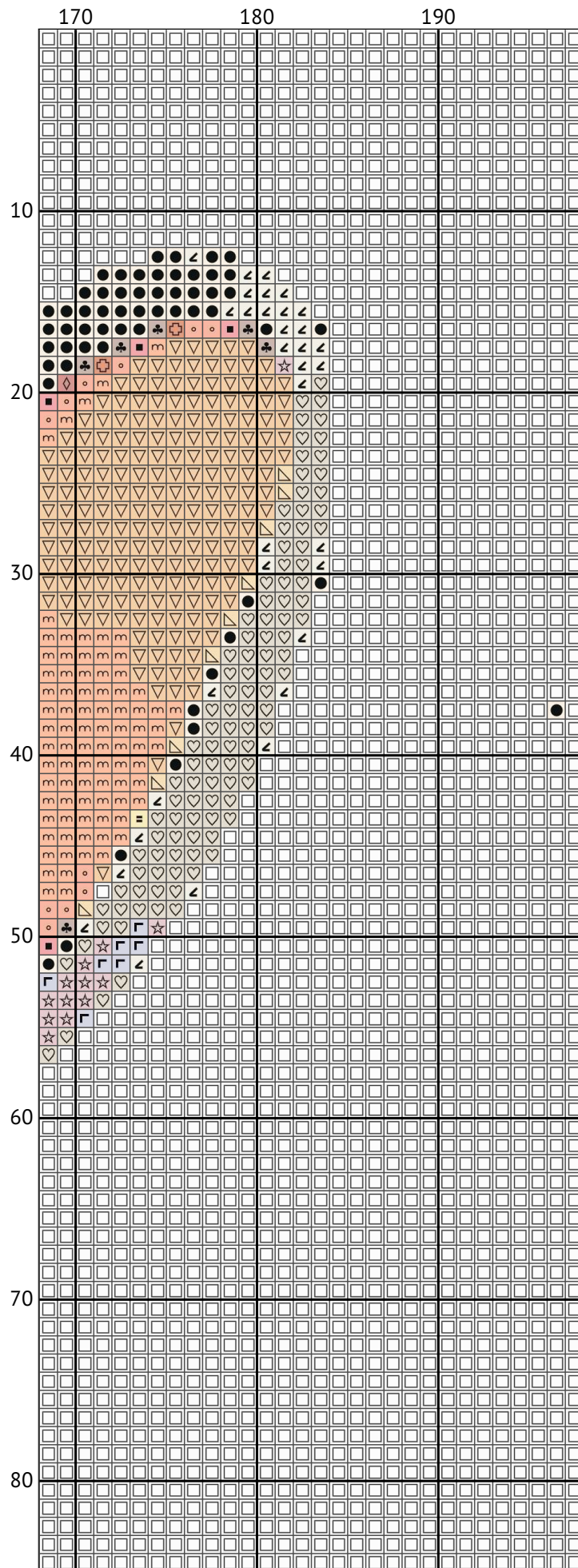
Bunnies with decorative egg bodies and floral patterns.



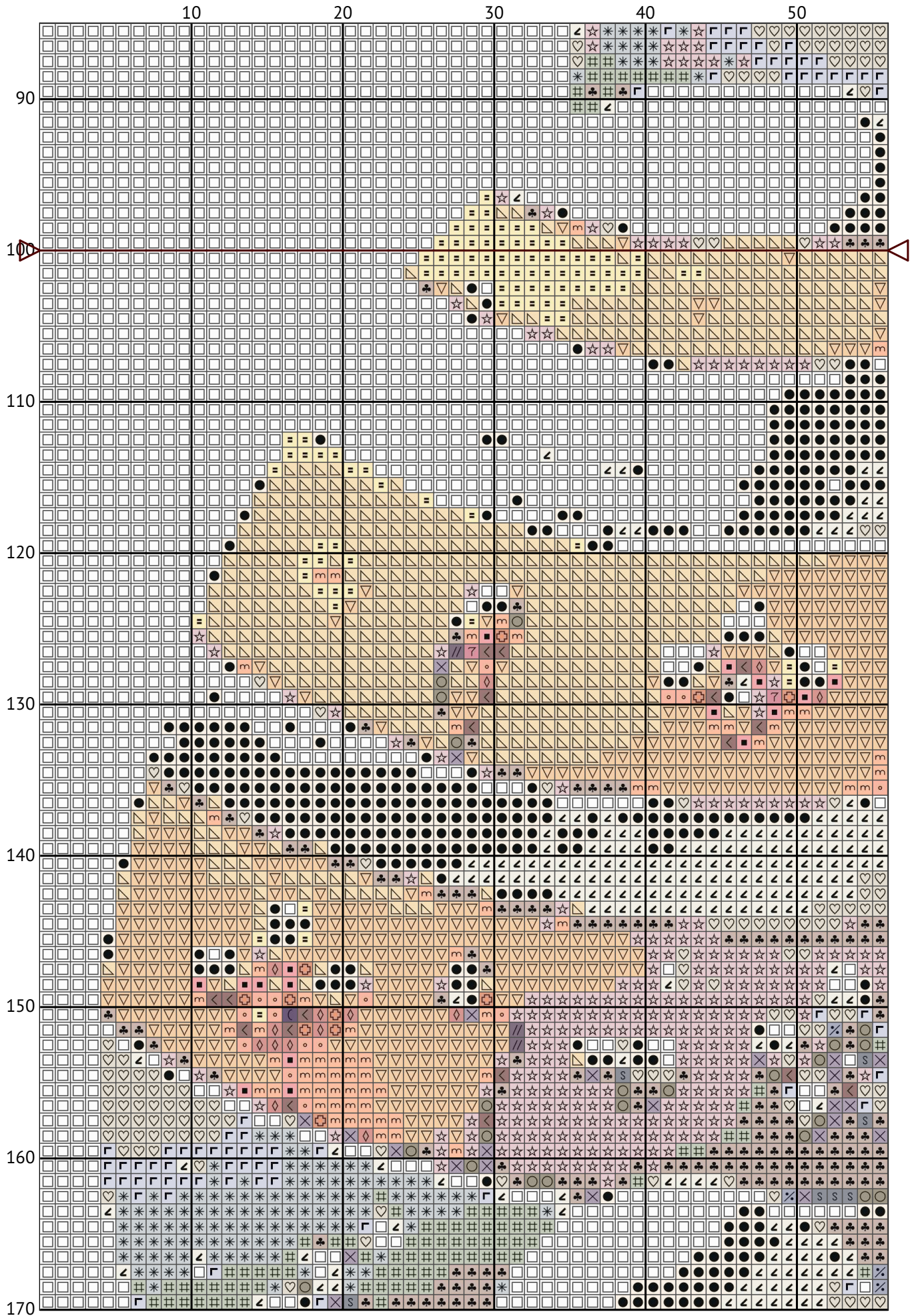
Bunnies with decorative egg bodies and floral patterns.



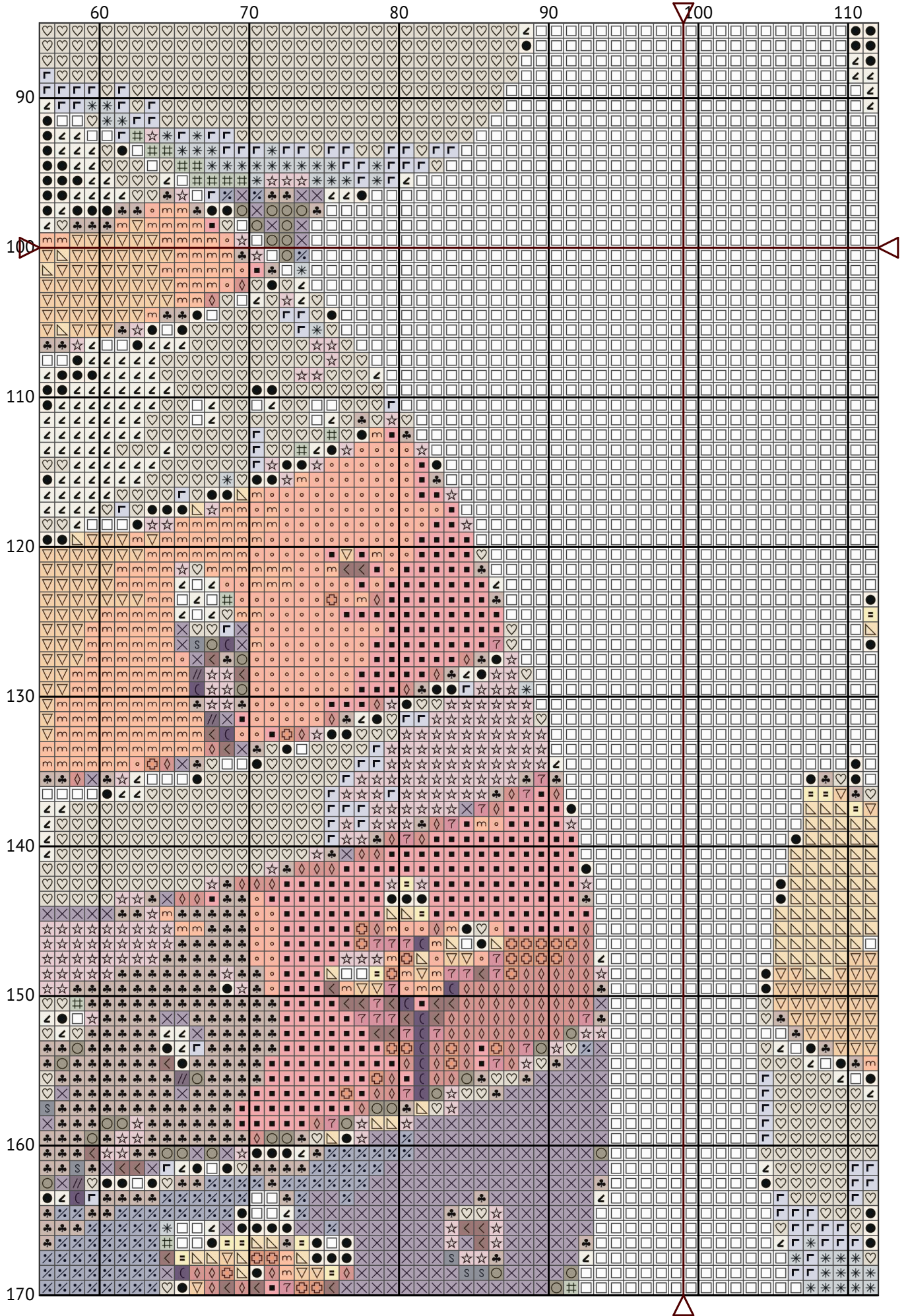
Bunnies with decorative egg bodies and floral patterns.



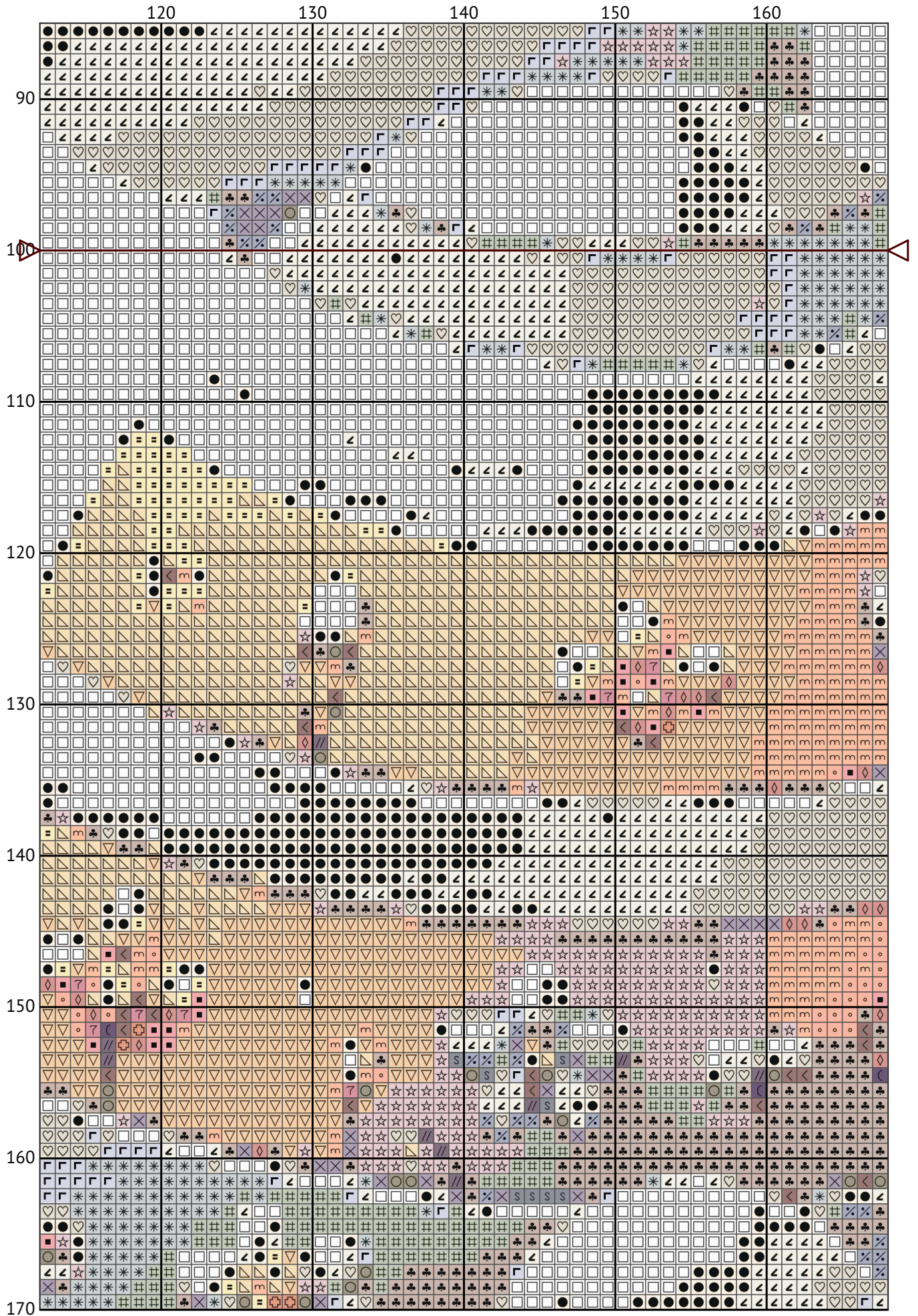
Bunnies with decorative egg bodies and floral patterns.



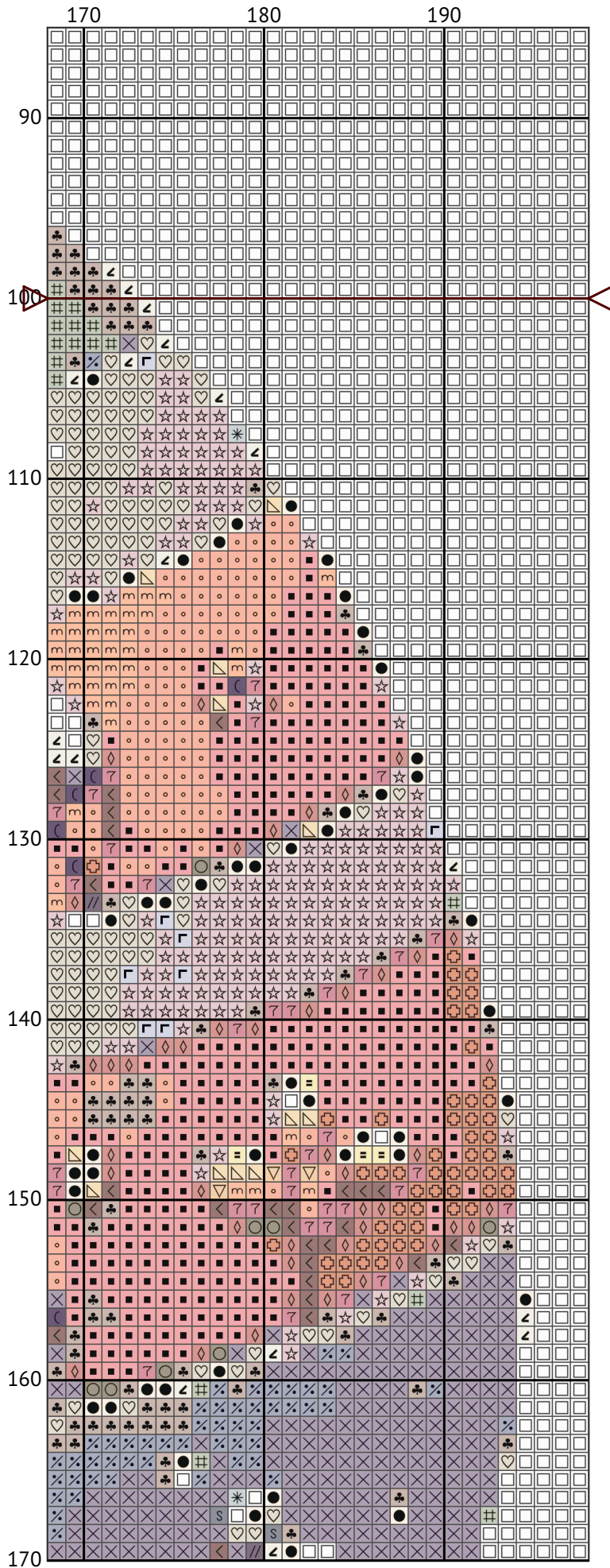
Bunnies with decorative egg bodies and floral patterns.



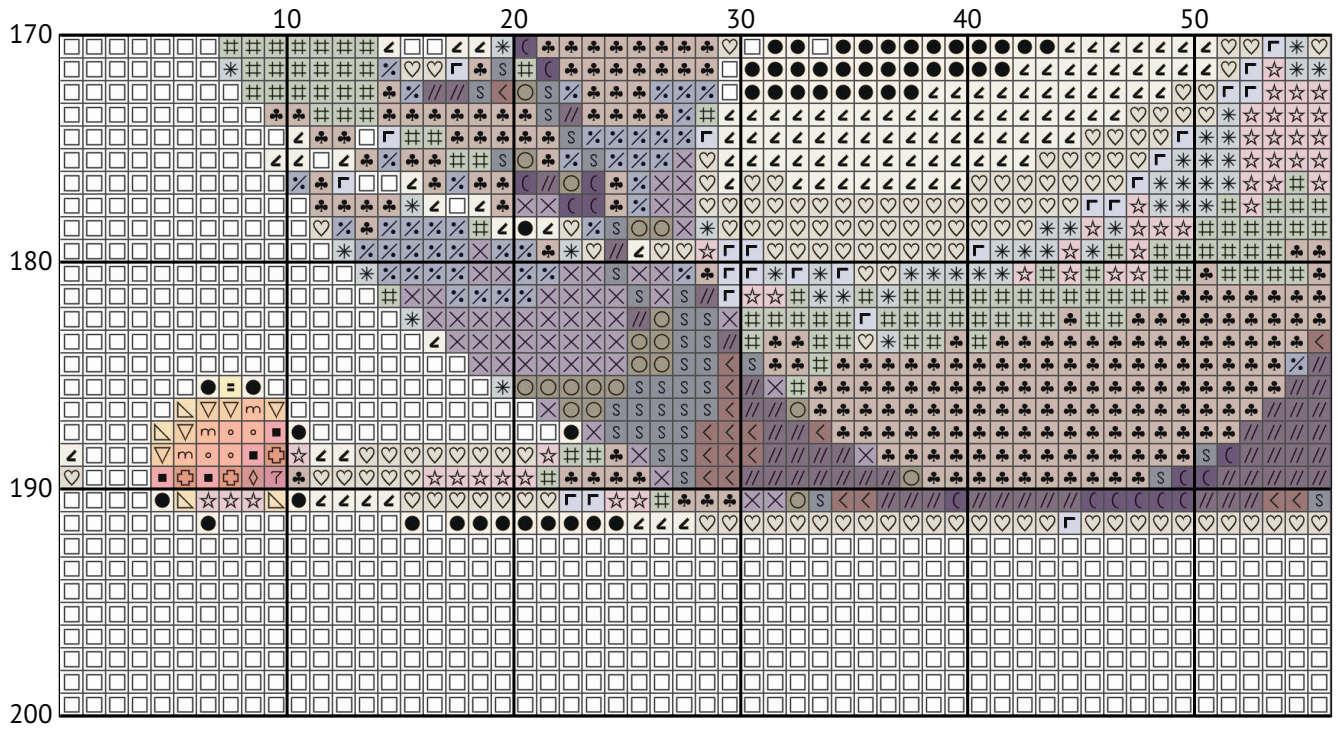
Bunnies with decorative egg bodies and floral patterns.



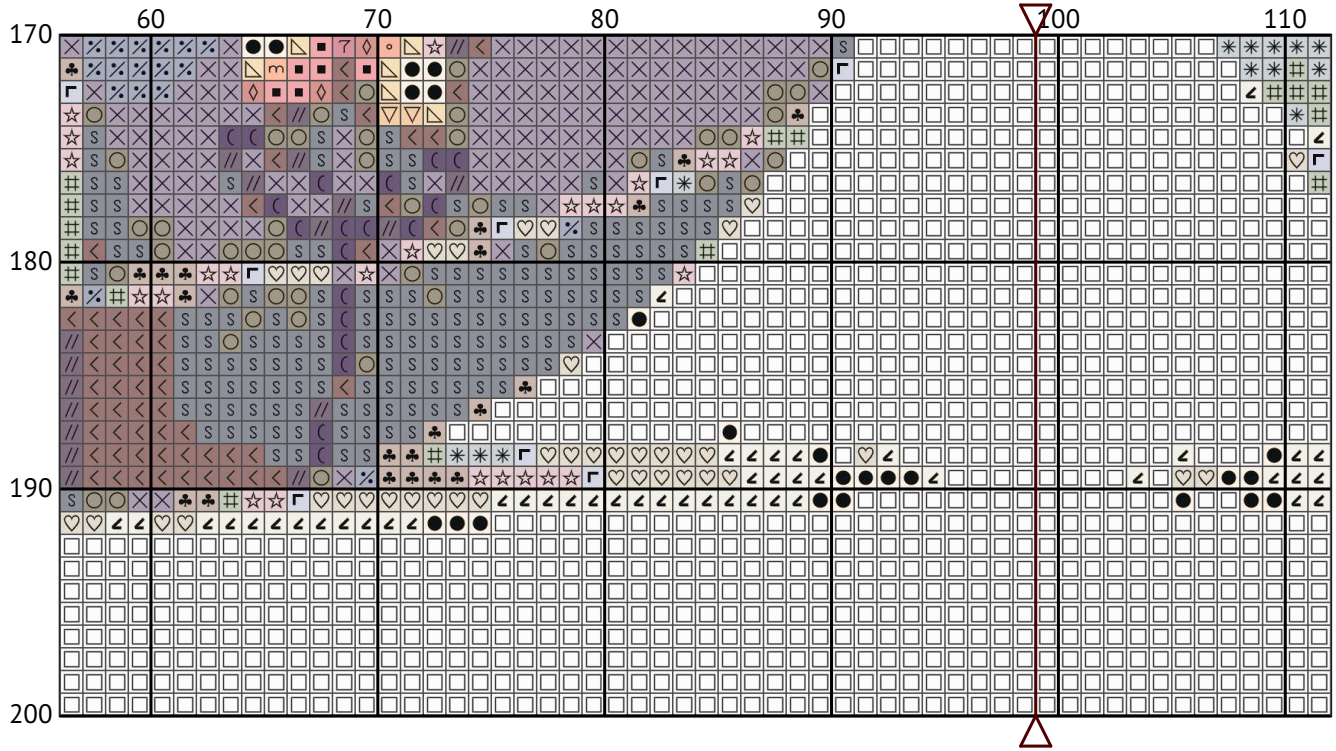
Bunnies with decorative egg bodies and floral patterns.



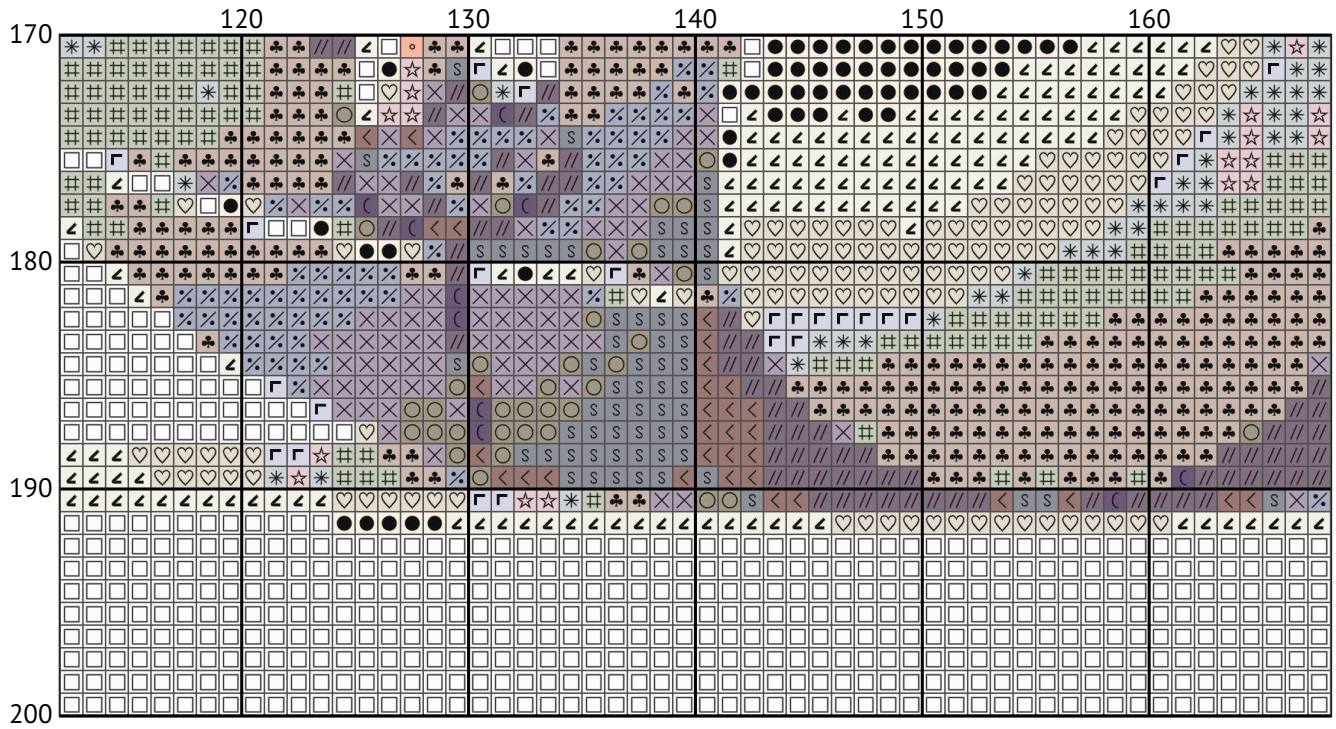
Bunnies with decorative egg bodies and floral patterns.



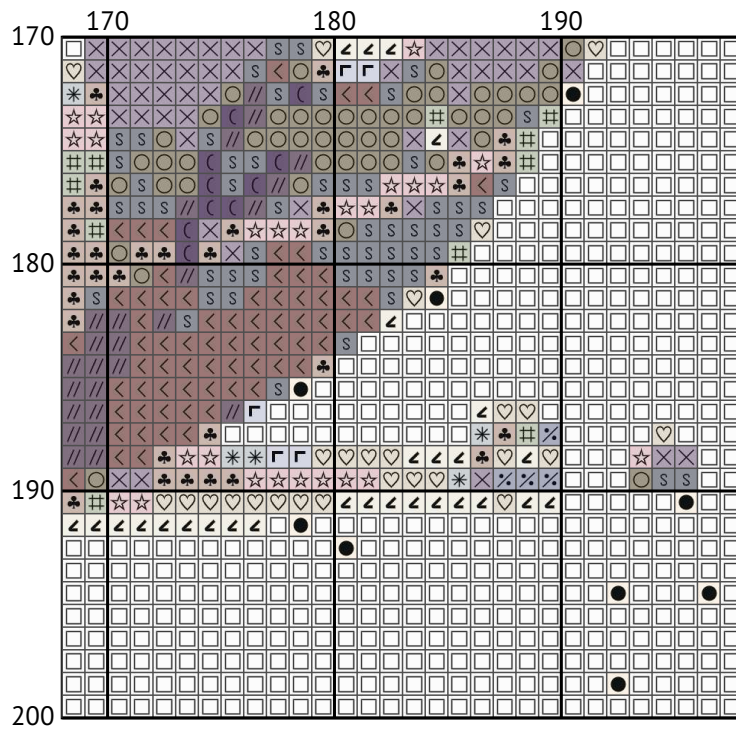
Bunnies with decorative egg bodies and floral patterns.



Bunnies with decorative egg bodies and floral patterns.



Bunnies with decorative egg bodies and floral patterns.



Floss list for crosses

To calculate the dimensions of a cross stitch design in centimeters or inches for a pattern size like "200 x 200 stitches," it's essential to know the fabric's count. The fabric count indicates the number of stitches that fit into one inch (or centimeter).

Here's the method to determine the size:

Identify the Fabric Count: Check the fabric packaging to find this information. Common fabric counts include 11, 14, 16, 18, 22, etc., representing the number of stitches per inch for each count.

Calculate the Size in Inches:

Divide the stitch count by the fabric count.















For instance, with a 200 x 200 stitch pattern on 14-count fabric, the calculation is $200 \text{ stitches} / 14 \text{ stitches per inch} = \text{approximately } 14.29 \text{ inches}$ for each side.

Calculate the Size in Centimeters:





















Convert inches to centimeters, knowing there are about 2.54 centimeters in an inch.

For the example given, $14.29 \text{ inches} * 2.54 \text{ cm/inch} = \text{approximately } 36.27 \text{ centimeters}$ on each side.

Keep in mind, the greater the fabric count, the smaller each stitch will be, resulting in a more compact design. On the other hand, a lower fabric count leads to larger stitches and a bigger overall design. Make sure to include extra fabric margins for framing or finishing your project.

N	Symbol	Number	Name	Stitches
1	S		DMC 03 Tin - Medium	354
2	☆		DMC 23 Apple Blossom	1025
3	┐		DMC 27 Violet - White	488
4	⌒		DMC 28 Eggplant - Medium Light	95
5	◇		DMC 224 Shell Pink - Very Light	275
6	⌘		DMC 415 Pearl Gray	348
7	♣		DMC 453 Shell Gray - Light	1475
8	○		DMC 648 Beaver Gray - Light	252
9	=		DMC 746 Off White	191
10	⊕		DMC 754 Peach - Light	159
11	✱		DMC 762 Pearl Gray - Very Light	693
12	7		DMC 778 Antique Mauve - Very Light	125
13	●		DMC 819 Baby Pink - Light	2021
14	▽		DMC 950 Desert Sand - Light	1639
15	△		DMC 951 Tawny - Light	1296

Bunnies with decorative egg bodies and floral patterns.

N	Symbol	Number	Name	Stitches
16		 DMC 967	Apricot - Very Light	852
17		 DMC 3042	Antique Violet - Light	236
18		 DMC 3072	Beaver Gray - Very Light	692
19		 DMC 3713	Salmon - Very Light	848
20		 DMC 3743	Antique Violet - Very Light	866
21		 DMC 3779	Rosewood - Very Light	559
22		 DMC 3861	Cocoa - Light	307
23		 DMC 3865	Winter White	2171
24		 DMC 3866	Mocha - Ultra Very Light	3337
25		 DMC B5200	Snow White	19296