

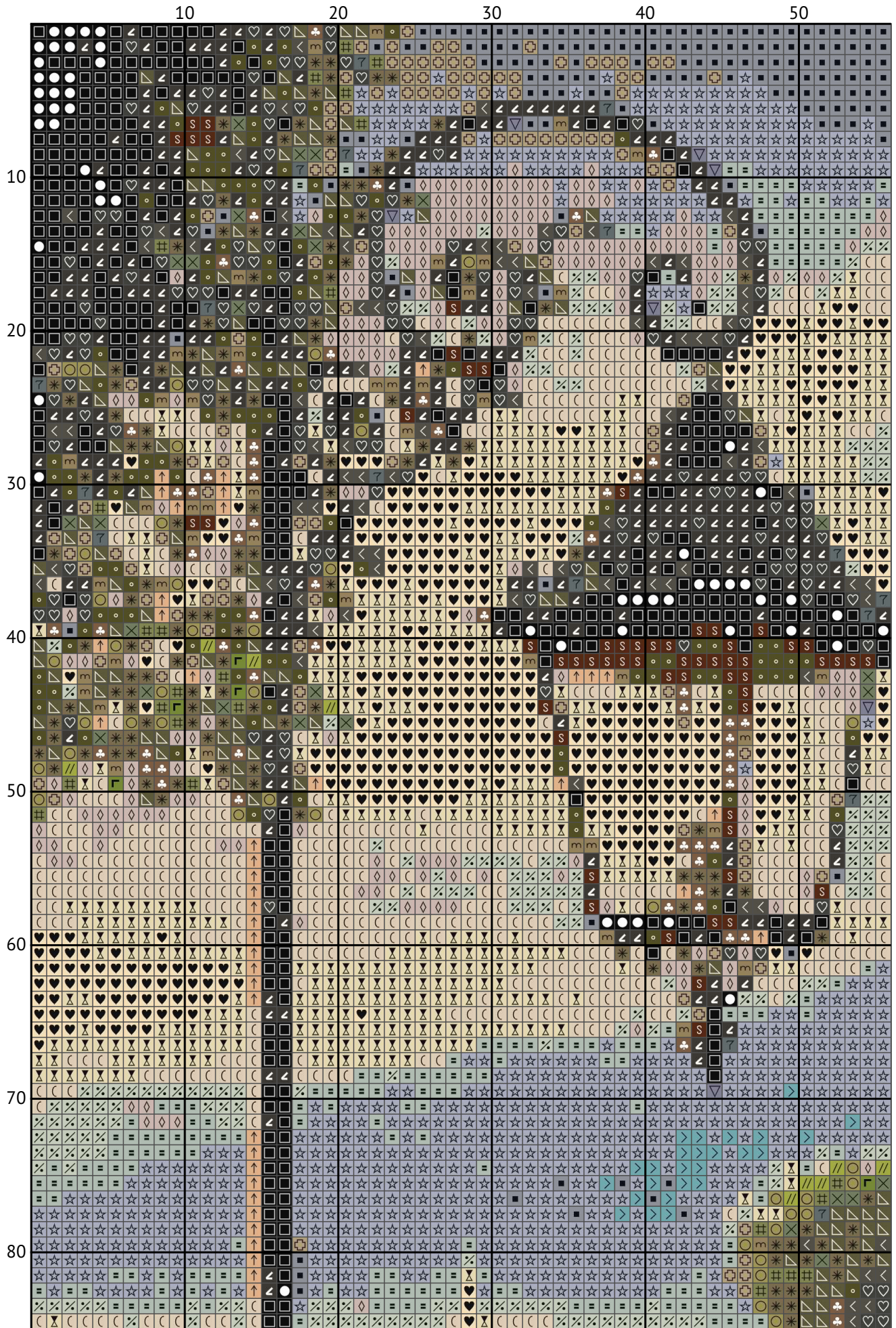
A coastal village

Cross stitch chart from patterns.stitchingsecrets.com

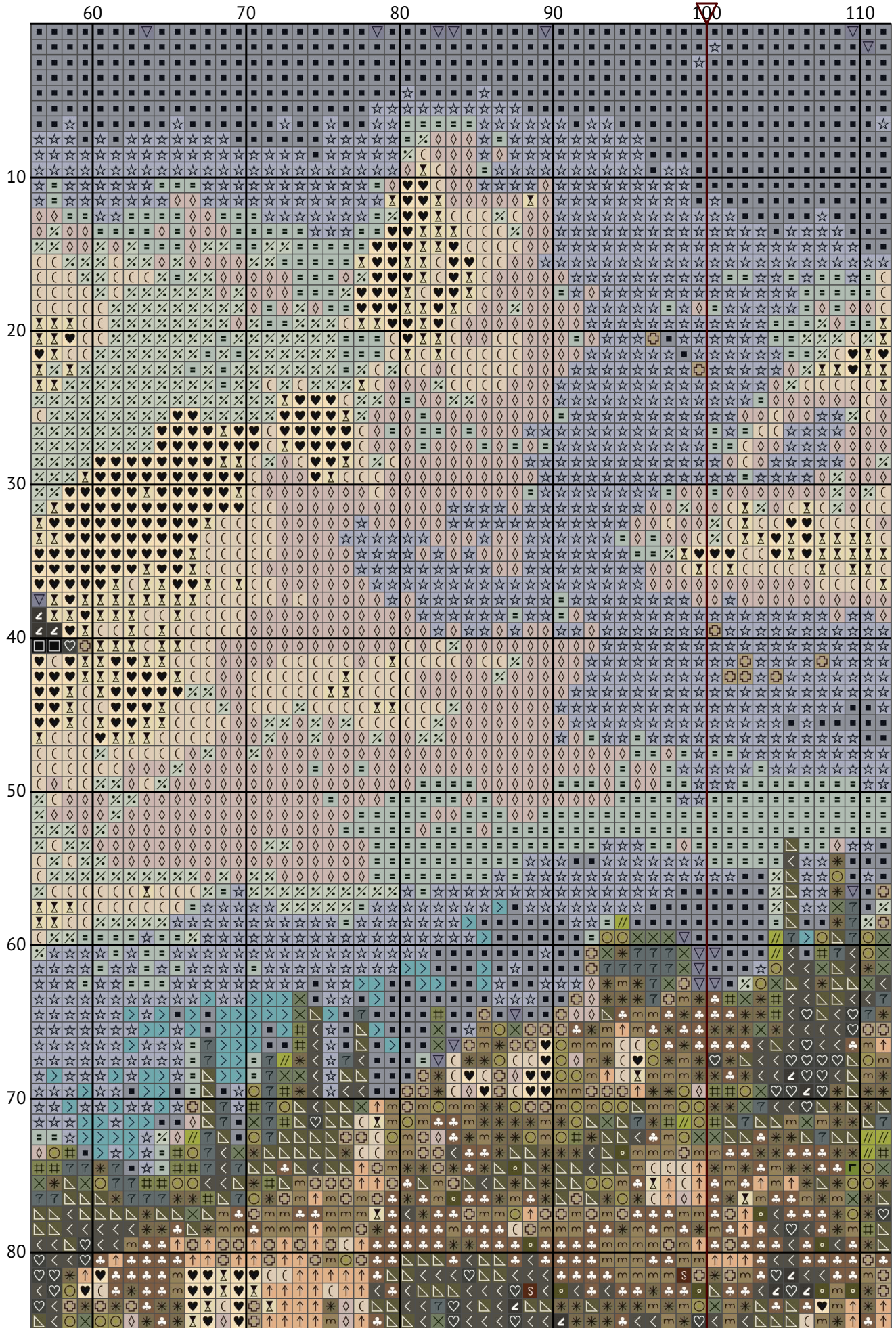


Design size: 200 x 200 stitches

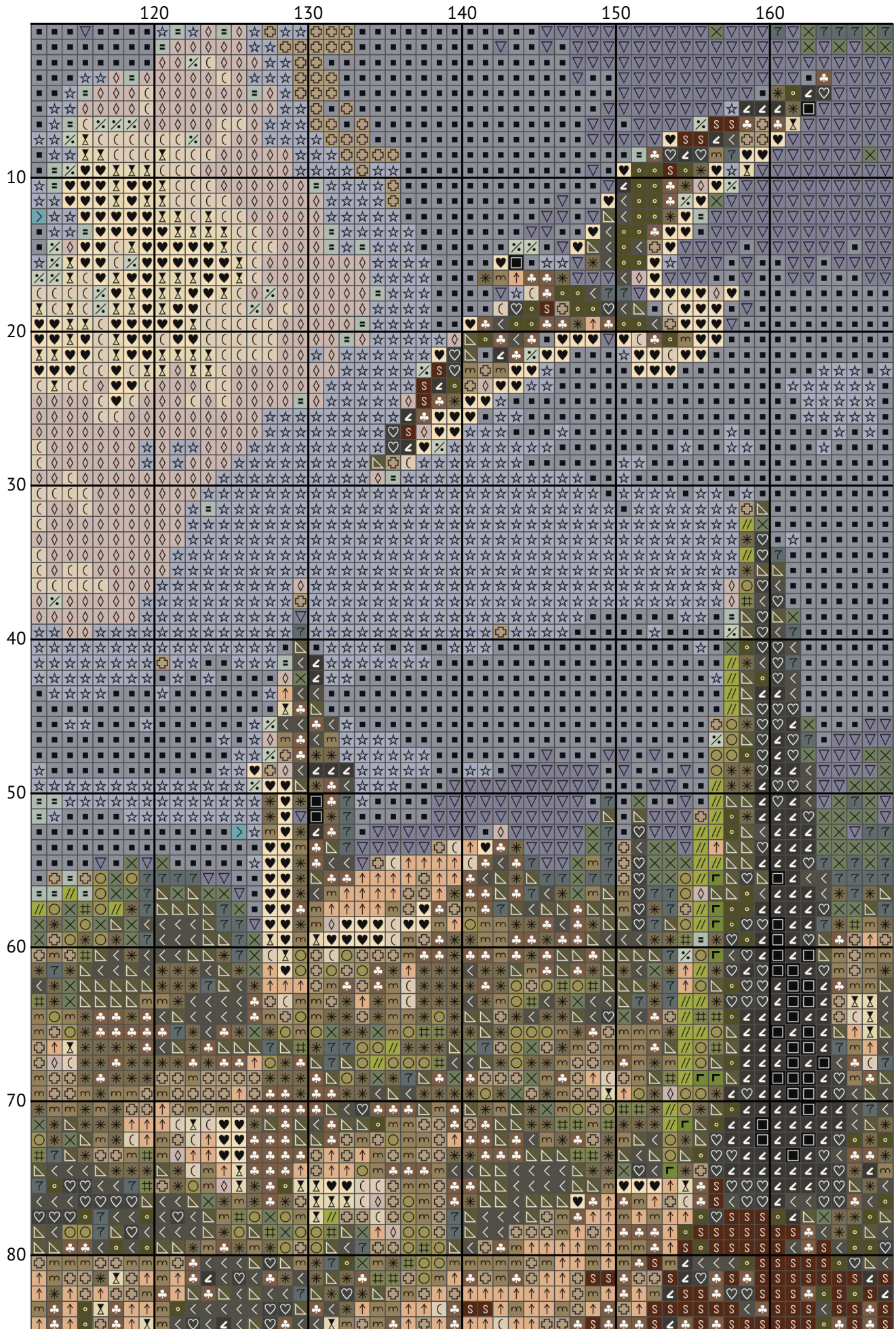
A coastal village



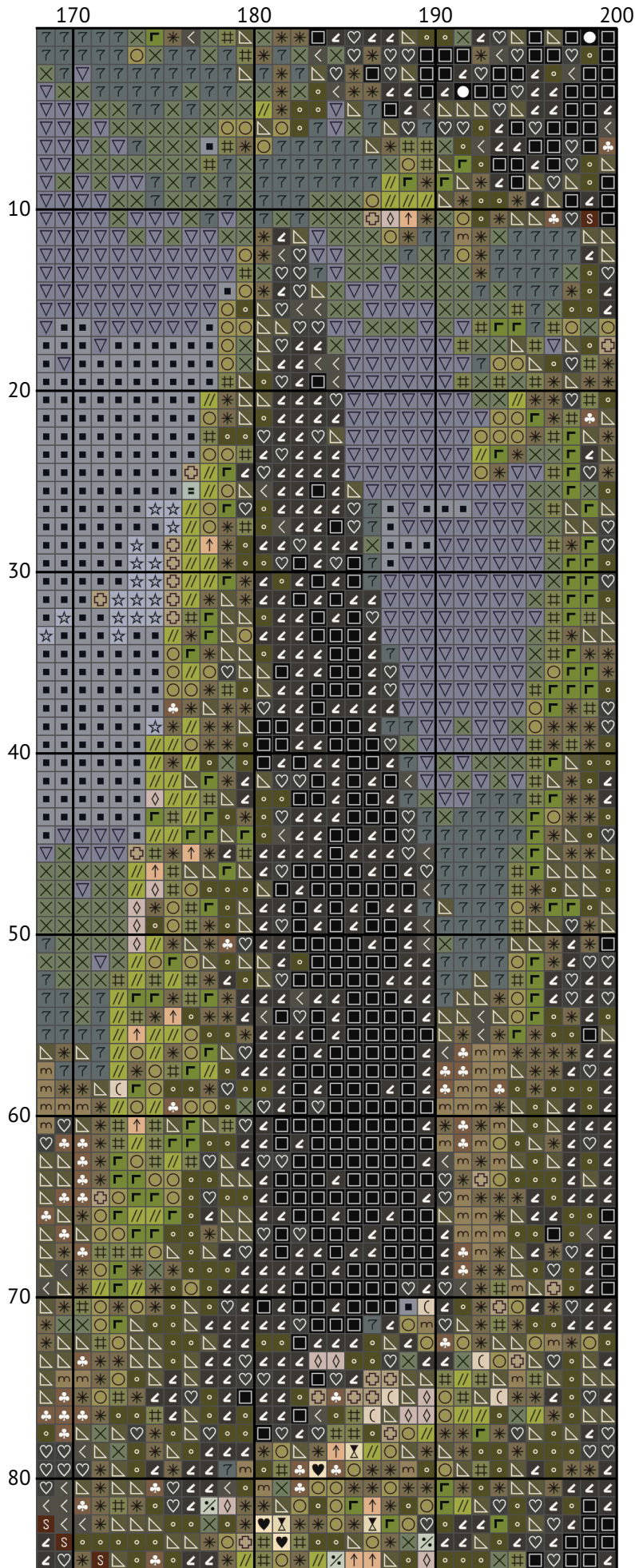
A coastal village



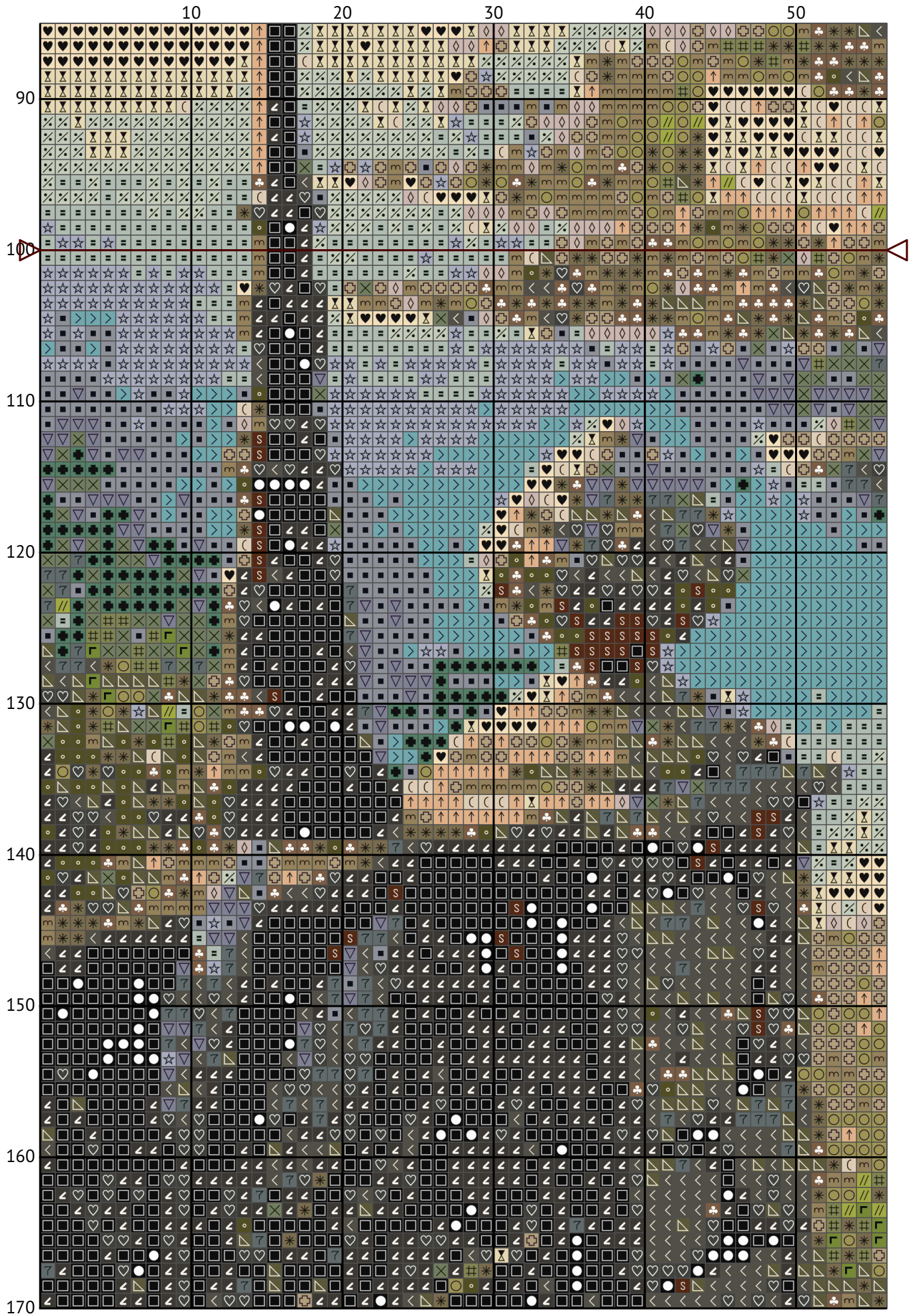
A coastal village



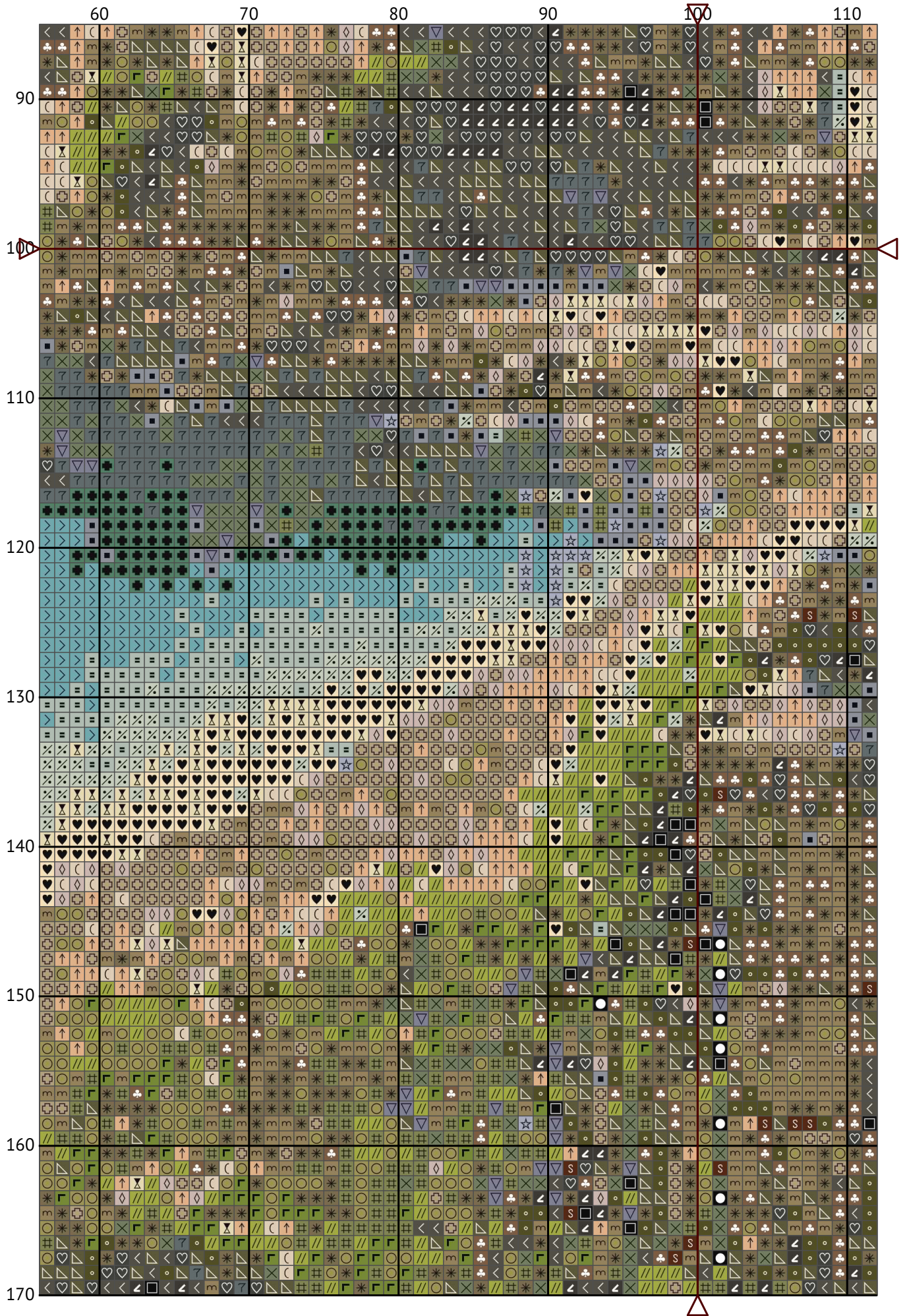
A coastal village



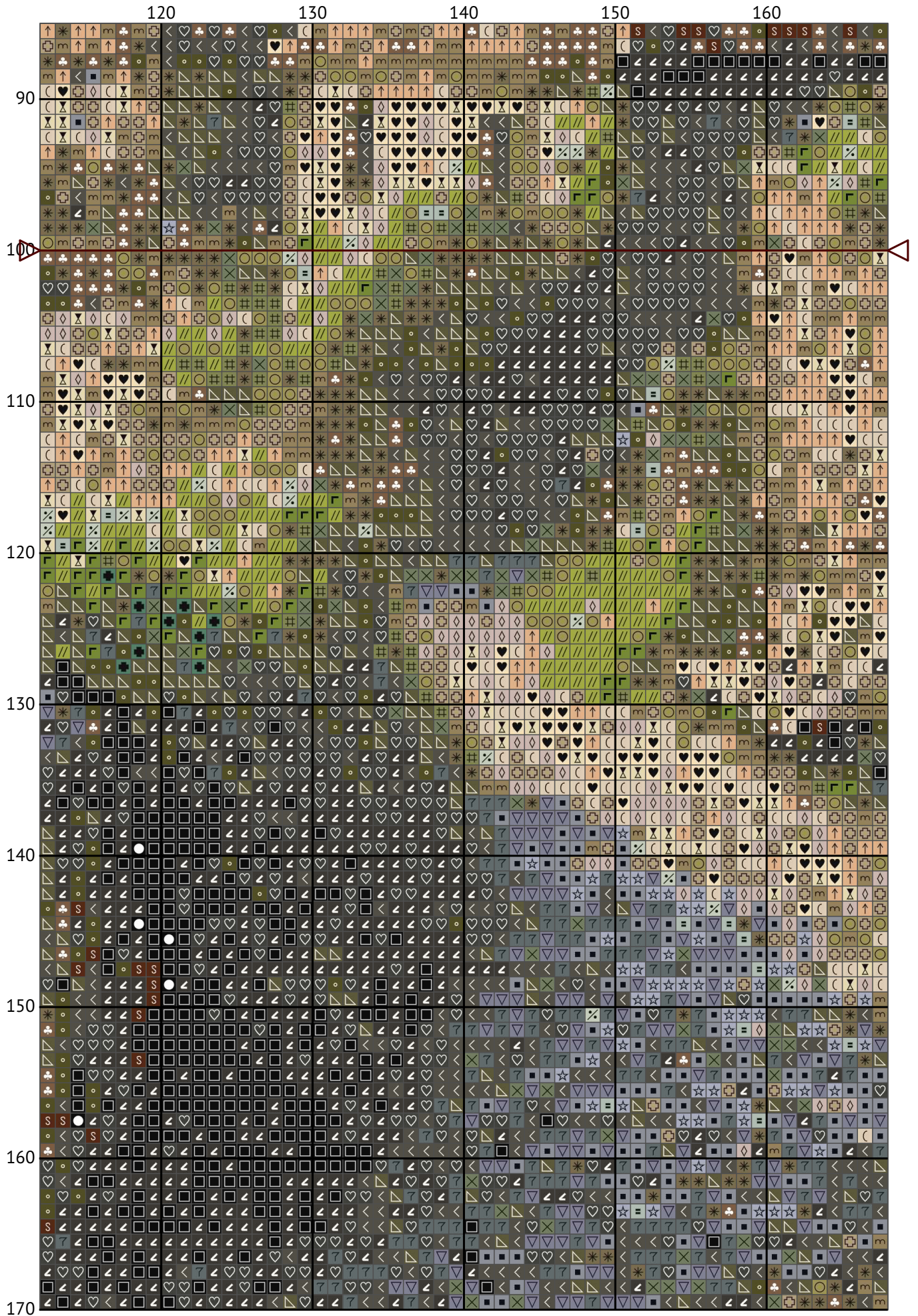
A coastal village



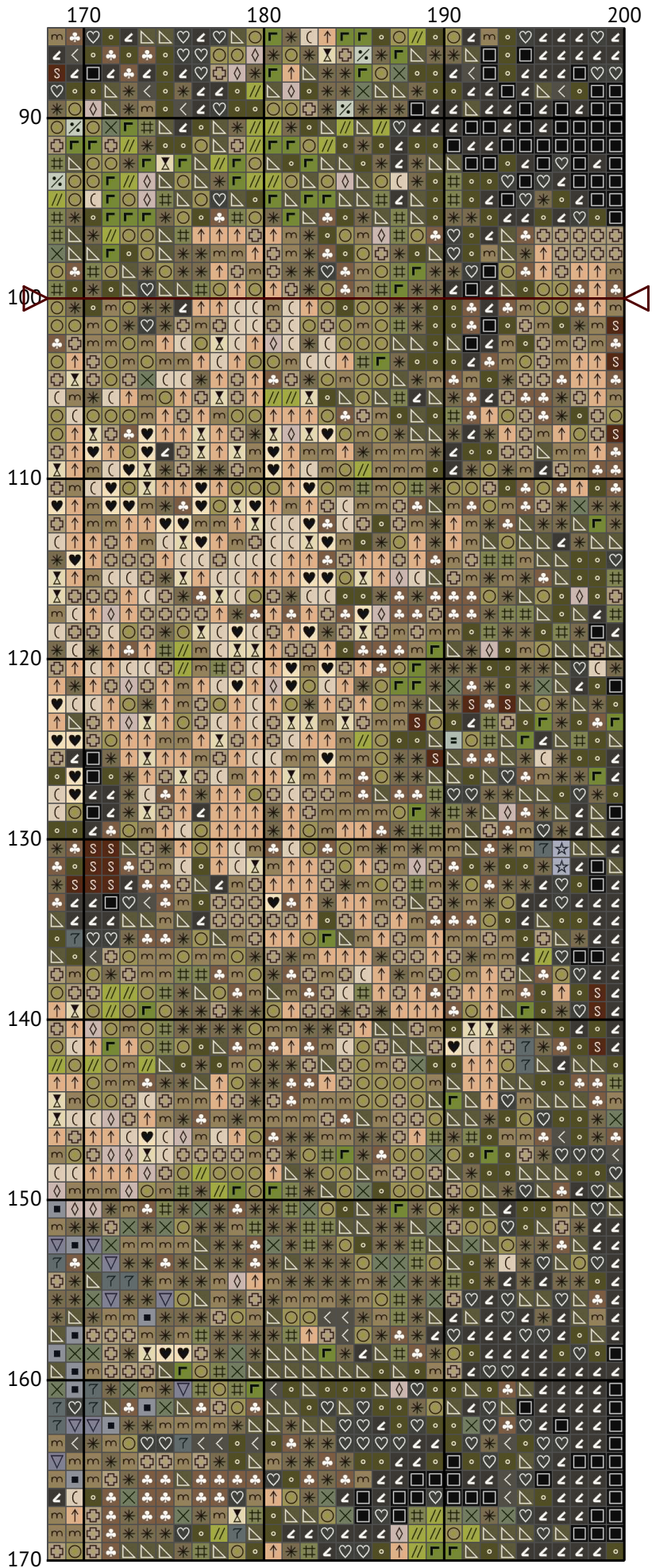
A coastal village



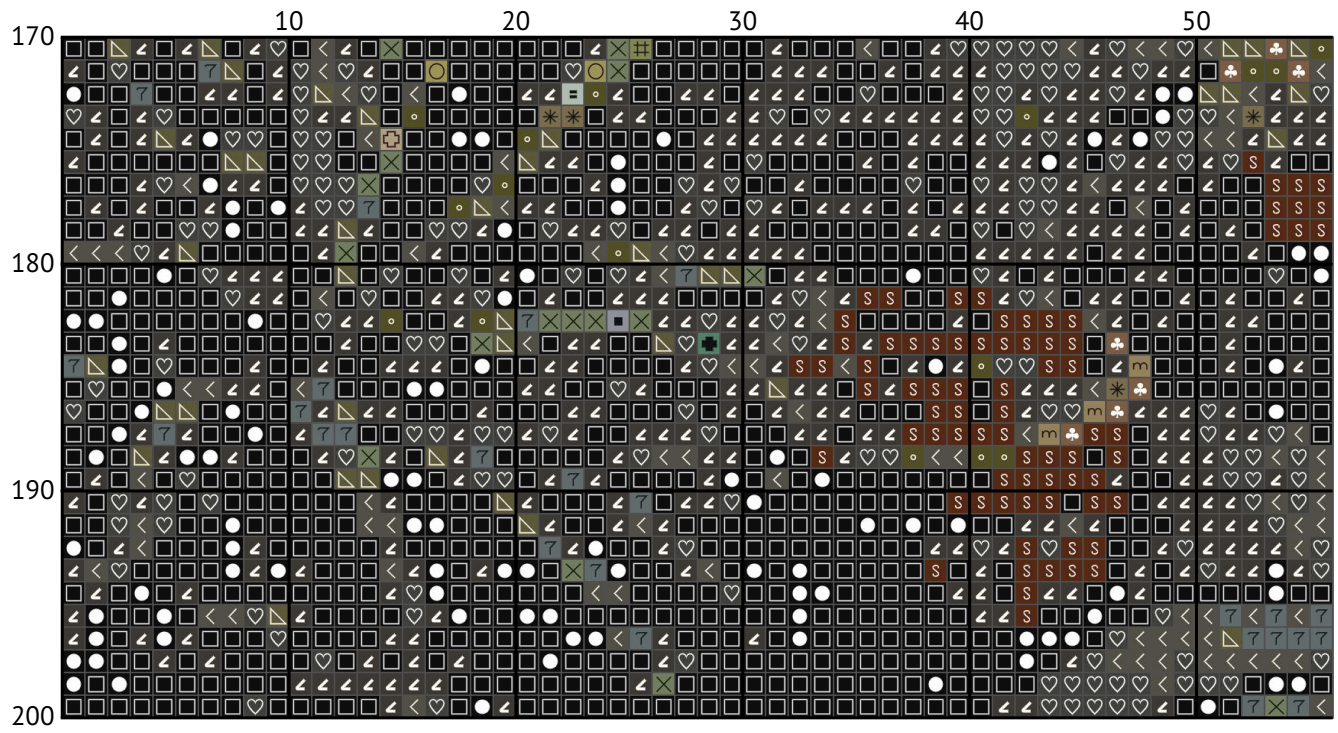
A coastal village



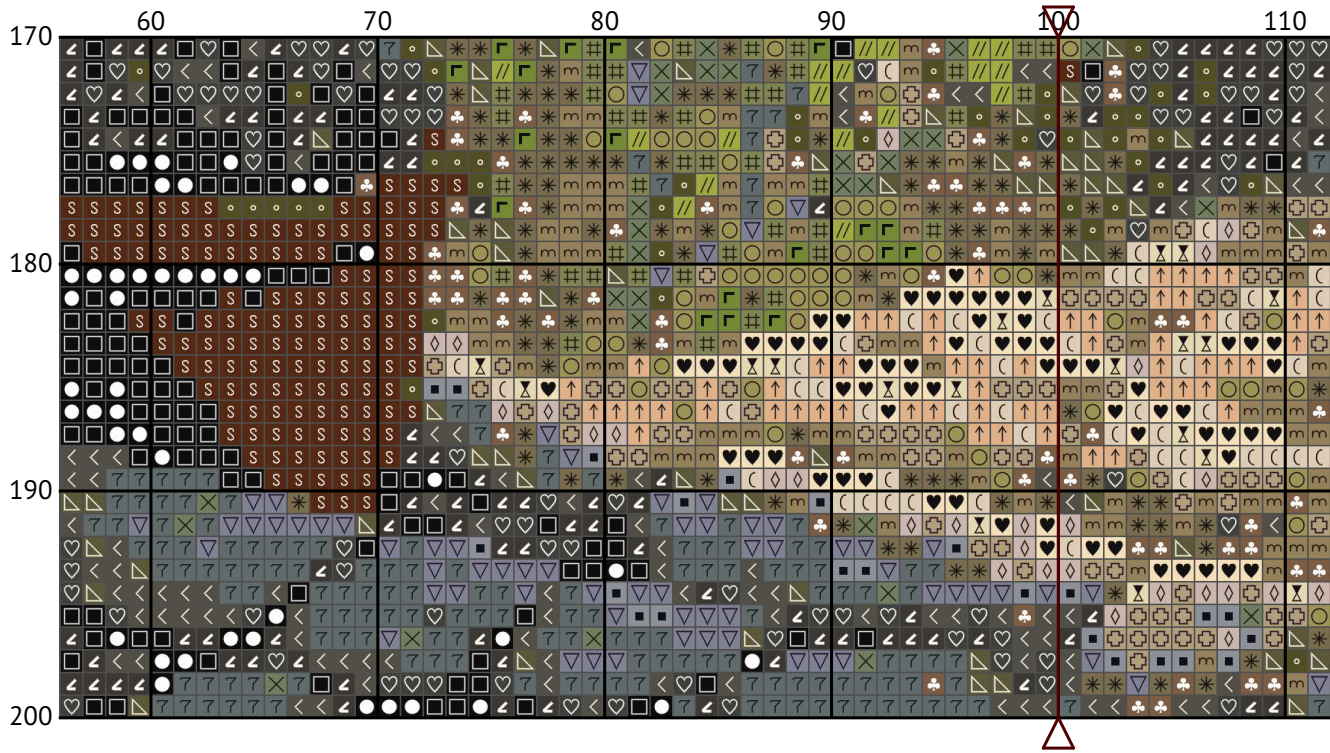
A coastal village



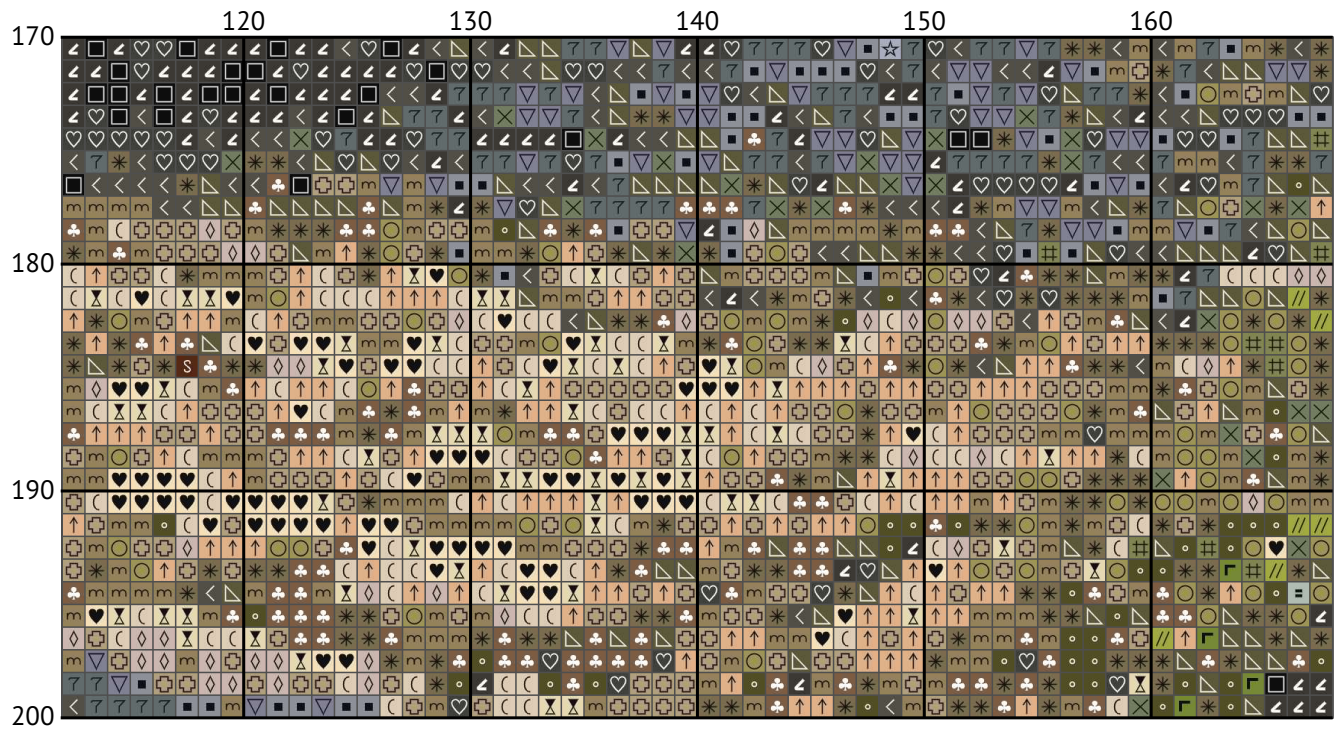
A coastal village



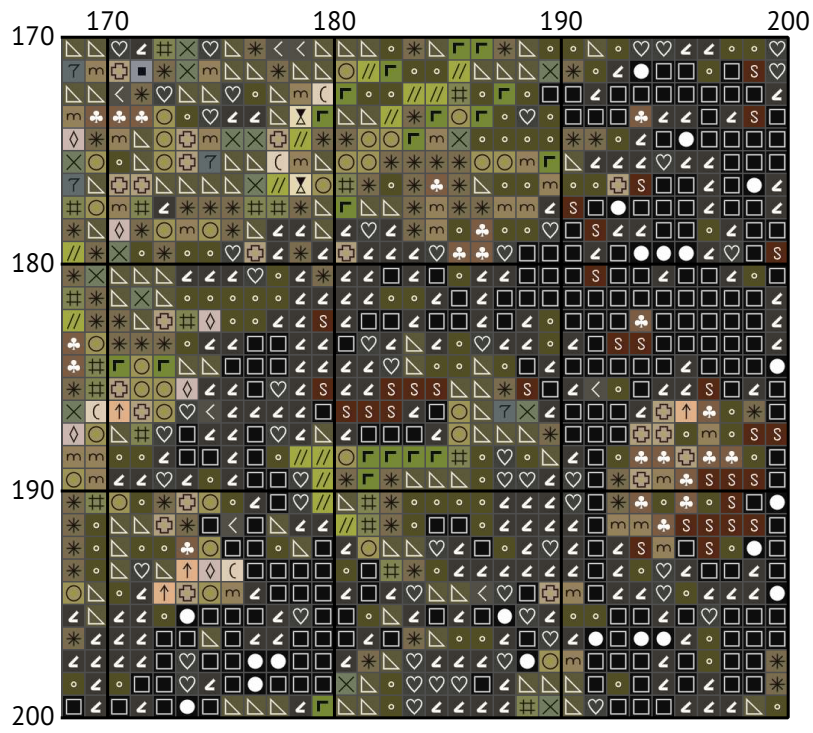
A coastal village



A coastal village



A coastal village



Floss list for crosses

How to Convert Cross Stitch Pattern Sizes: A Step-by-Step Guide

When you download a cross stitch pattern, you'll often find the design size expressed in stitches, such as "Design size: 200 x 200 stitches." To determine the physical dimensions of your design, you need to know the fabric's thread count, typically referred to as the "count." In this guide, we'll walk you through converting stitch count to inches and centimeters for a 14-count Aida fabric.

Understanding Fabric Count

The fabric count indicates how many threads (or squares) there are per inch. For example, a 14-count Aida fabric has 14 stitches per inch. This information is crucial for calculating the physical size of your cross stitch design.

Example Calculation for 200 x 200 Stitches on 14-Count Aida

Given:

Design size: 200 x 200 stitches

Fabric count: 14-count Aida

Steps to Calculate:

Calculate the size in inches:

Width: 200 stitches ÷ 14 stitches per inch = 14.29 inches

Height: 200 stitches ÷ 14 stitches per inch = 14.29 inches

Convert inches to centimeters (1 inch = 2.54 cm):

Width: 14.29 inches × 2.54 cm/inch = 36.30 cm

Height: 14.29 inches × 2.54 cm/inch = 36.30 cm

Summary of Dimensions for 14-Count Aida

Width: 14.29 inches (36.30 cm)

Height: 14.29 inches (36.30 cm)

Conclusion

By following these steps, you can easily convert any design size in stitches to its physical dimensions in inches or centimeters based on the fabric count you are using. This ensures that your finished cross stitch piece will fit perfectly in your chosen frame or display area.

Happy stitching!

N	Symbol	Number	Name	Stitches
1	■	DMC 03	Tin - Medium	2447
2	ㄟ	DMC 169	Pewter - Light	1014
3	●	DMC 310	Black	313
4	□	DMC 310	Black	2907
5	▽	DMC 318	Steel Gray - Light	1059
6	☆	DMC 415	Pearl Gray	2832
7	◇	DMC 453	Shell Gray - Light	1588
8	┐	DMC 471	Avocado Green - Very Light	380
9	//	DMC 472	Avocado Green - Ultra Light	566
10	♡	DMC 535	Ash Gray - Very Light	1649
11	>	DMC 598	Turquoise - Light	525

A coastal village

N	Symbol	Number	Name	Stitches
12		DMC 640	Beige Gray - Very Dark	2027
13		DMC 642	Beige Gray - Dark	2210
14		DMC 645	Beaver Gray - Very Dark	1608
15		DMC 712	Cream	1214
16		DMC 801	Coffee Brown - Dark	483
17		DMC 840	Beige Brown - Medium	1239
18		DMC 844	Beaver Gray - Ultra Dark	2835
19		DMC 928	Gray Green - Very Light	893
20		DMC 945	Tawny	1098
21		DMC 951	Tawny - Light	1427
22		DMC 3011	Khaki Green - Dark	1136
23		DMC 3013	Khaki Green - Light	1192
24		DMC 3022	Brown Gray - Medium	798
25		DMC 3032	Mocha Brown - Medium	1630
26		DMC 3033	Mocha Brown - Very Light	1528
27		DMC 3053	Green Gray	595
28		DMC 3072	Beaver Gray - Very Light	866
29		DMC 3782	Mocha Brown - Light	1757
30		DMC 3816	Celadon Green	184