

# Christmas-themed design

Cross stitch chart from [patterns.stitchingsecrets.com](https://patterns.stitchingsecrets.com)

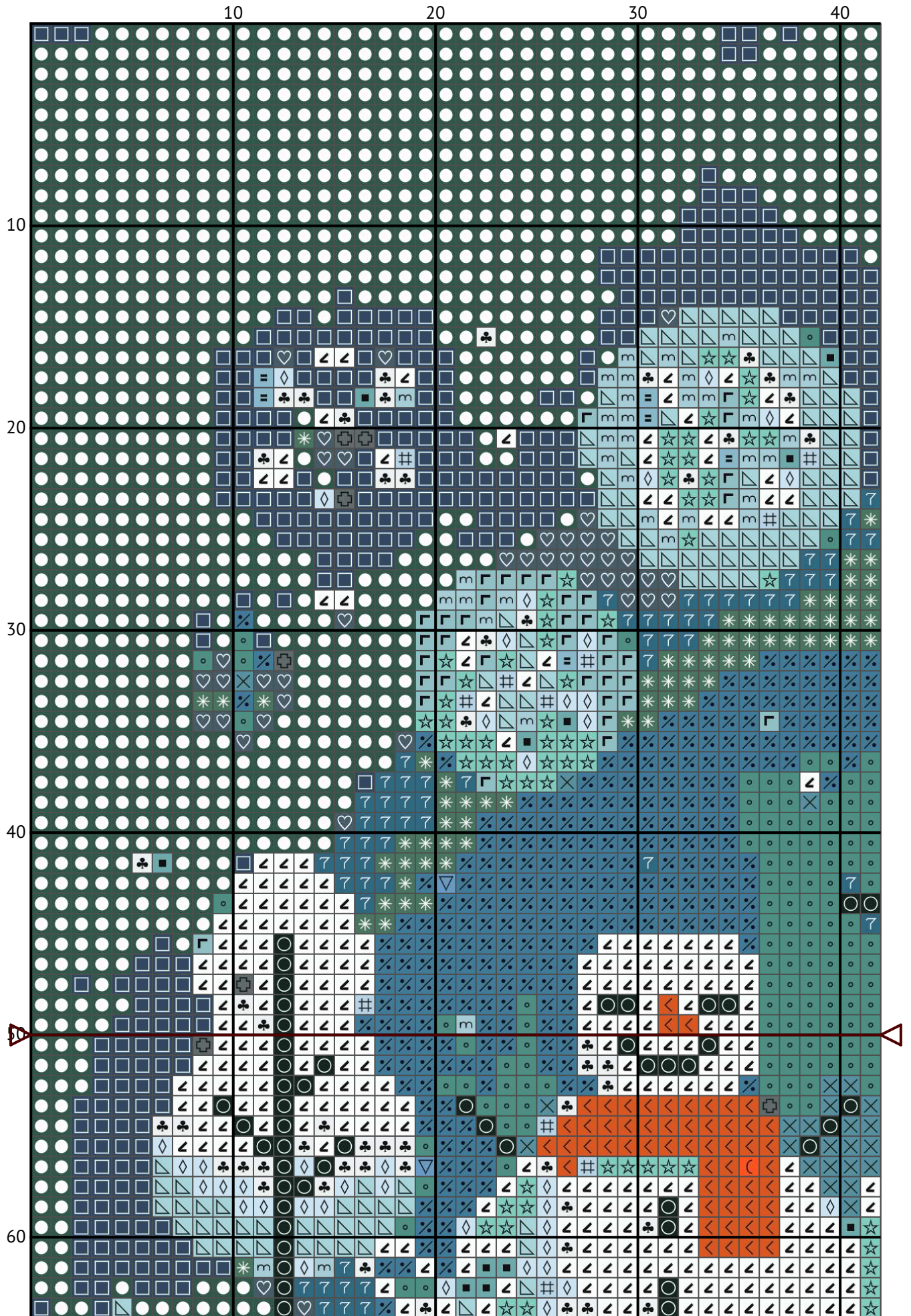
---



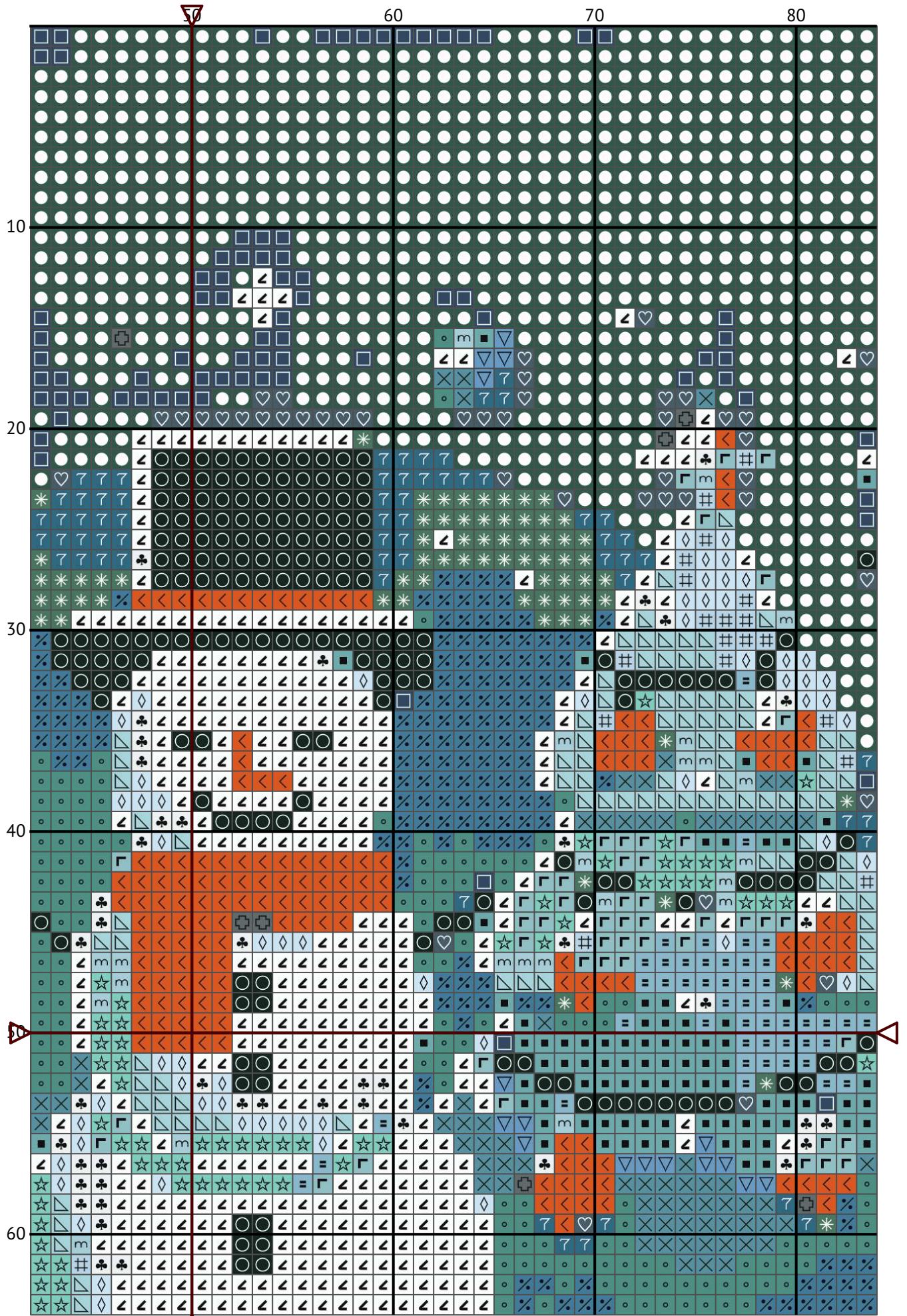
Design size: 100 x 100 stitches

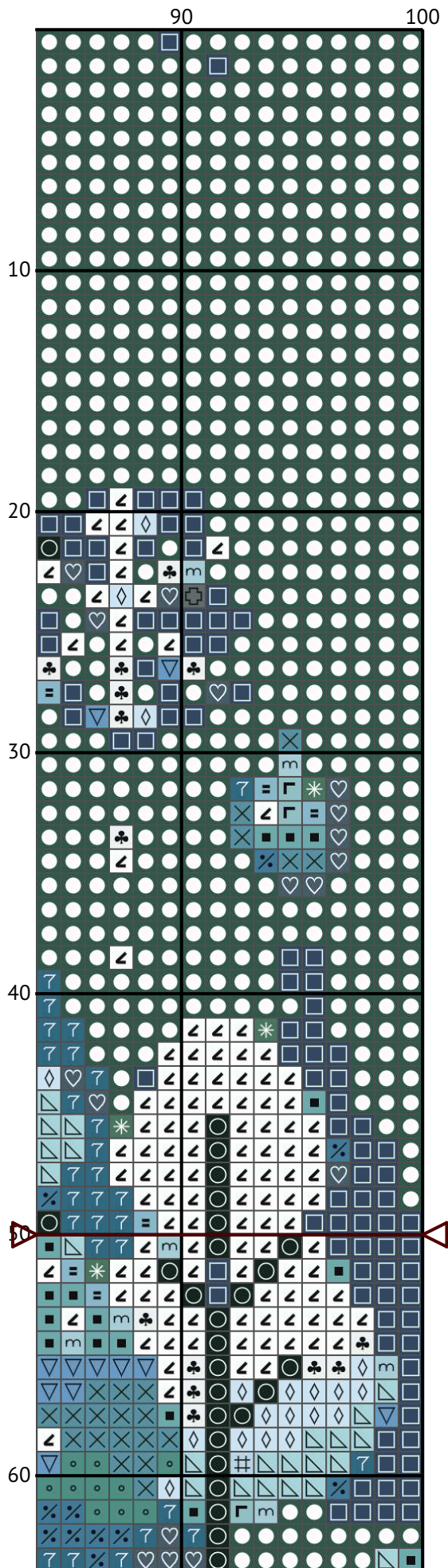


Christmas-themed design

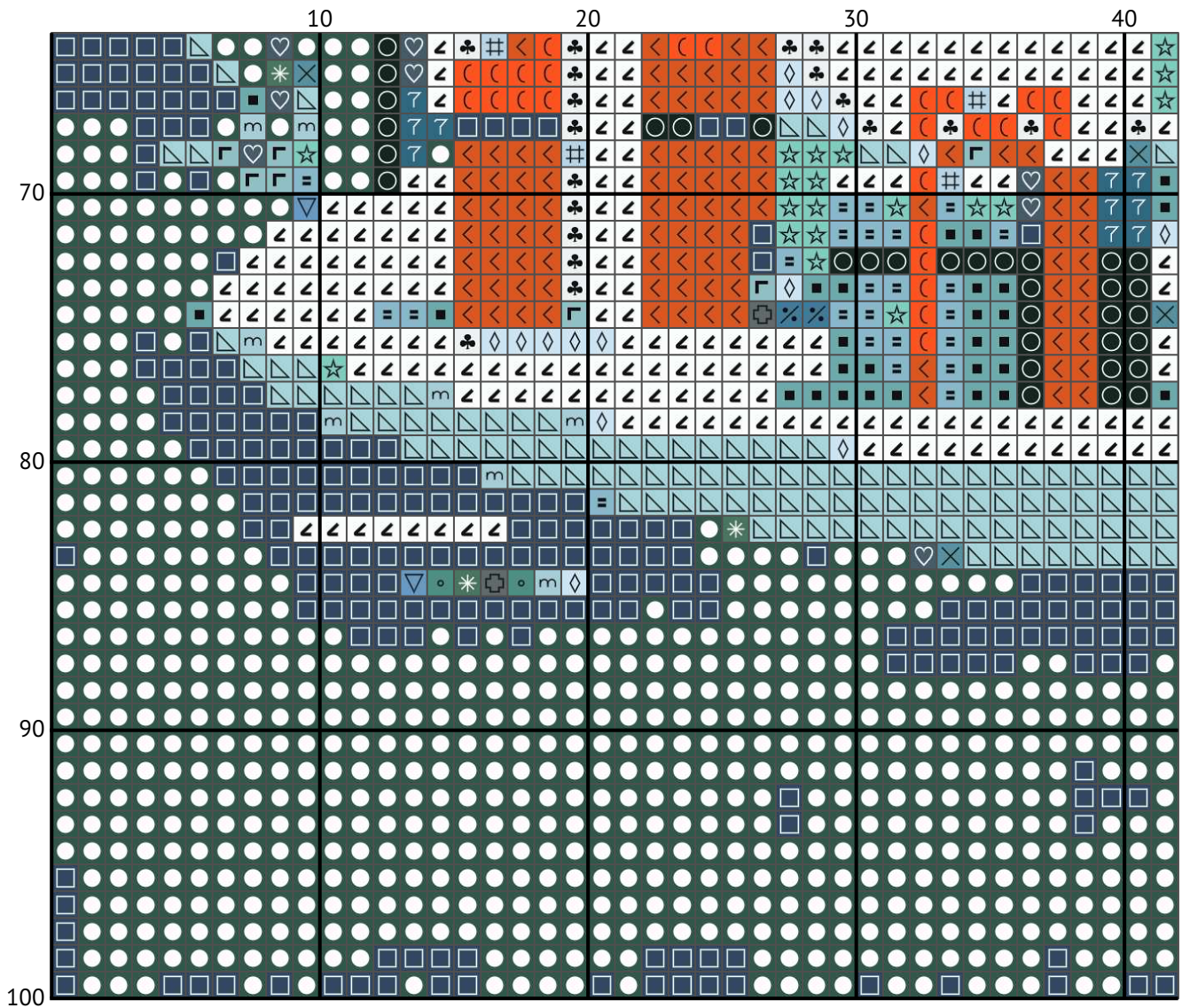


Christmas-themed design



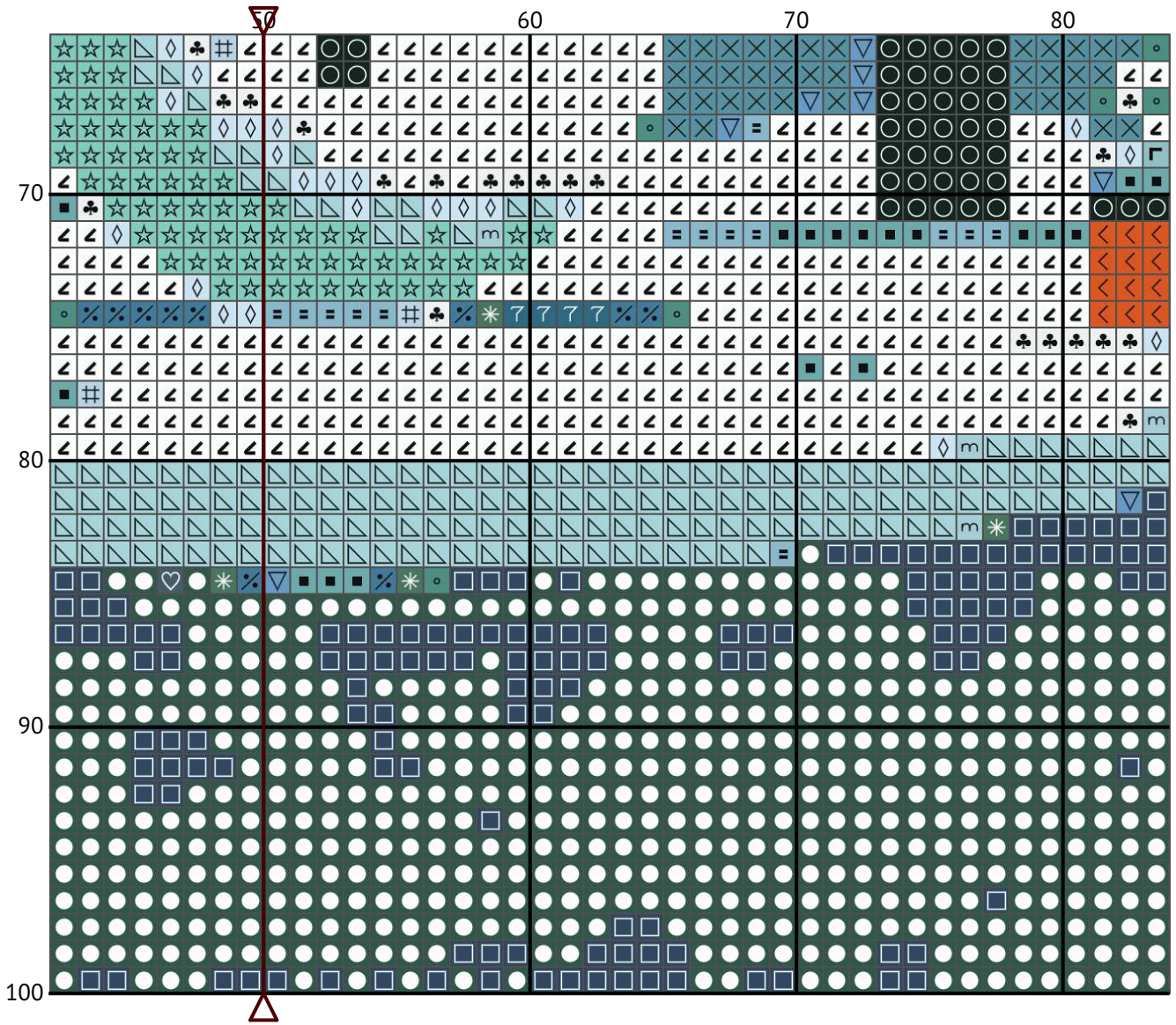


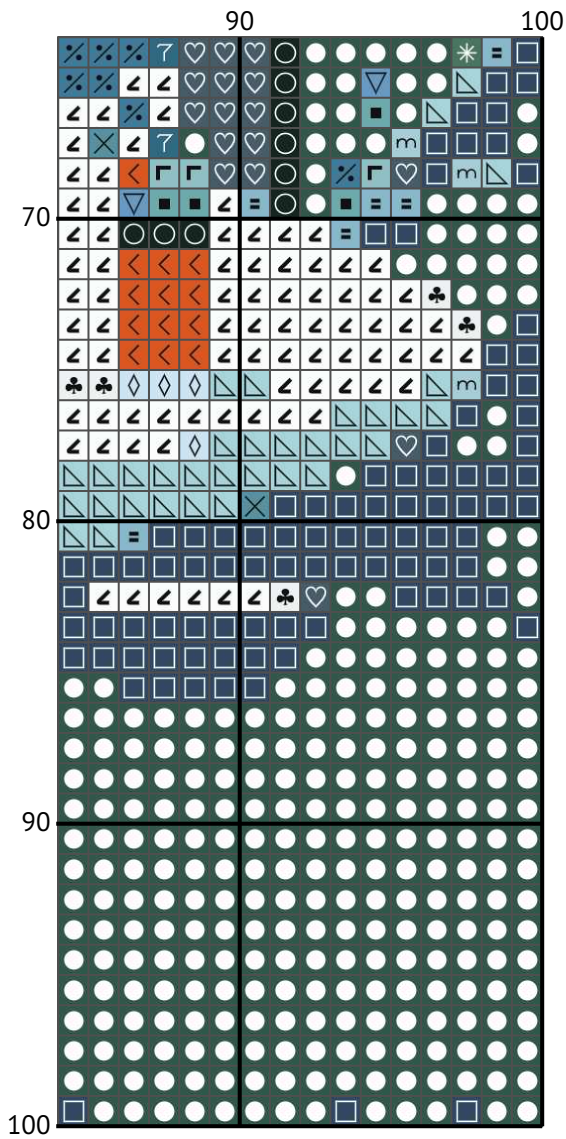
# Christmas-themed design





Christmas-themed design





Christmas-themed design

## Floss list for crosses

### How to Convert Cross Stitch Pattern Sizes: A Step-by-Step Guide

When you download a cross stitch pattern, you'll often find the design size expressed in stitches, such as "Design size: 100 x 100 stitches." To determine the physical dimensions of your design, you need to know the fabric's thread count, typically referred to as the "count." In this guide, we'll walk you through converting stitch count to inches and centimeters for a 14-count Aida fabric.

#### Understanding Fabric Count

The fabric count indicates how many threads (or squares) there are per inch. For example, a 14-count Aida fabric has 14 stitches per inch. This information is crucial for calculating the physical size of your cross stitch design.

#### Example Calculation for 100 x 100 Stitches on 14-Count Aida

Given:

Design size: 100 x 100 stitches

Fabric count: 14-count Aida

Steps to Calculate:

Calculate the size in inches:

Width:  $100 \text{ stitches} \div 14 \text{ stitches per inch} = 7.14 \text{ inches}$

Height:  $100 \text{ stitches} \div 14 \text{ stitches per inch} = 7.14 \text{ inches}$

Convert inches to centimeters (1 inch = 2.54 cm):

Width:  $7.14 \text{ inches} \times 2.54 \text{ cm/inch} = 18.14 \text{ cm}$

Height:  $7.14 \text{ inches} \times 2.54 \text{ cm/inch} = 18.14 \text{ cm}$

#### Summary of Dimensions for 14-Count Aida























Width: 7.14 inches (18.14 cm)

Height: 7.14 inches (18.14 cm)

#### Conclusion














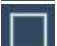










By following these steps, you can easily convert any design size in stitches to its physical dimensions in inches or centimeters based on the fabric count you are using. This ensures that your finished cross stitch piece will fit perfectly in your chosen frame or display area.

Happy stitching!

N	Symbol	Number	Name	Stitches
1			DMC 169 Pewter - Light	17
2			DMC 500 Blue Green - Very Dark	343
3			DMC 502 Blue Green	149
4			DMC 519 Sky Blue	41
5			DMC 597 Turquoise	158
6			DMC 598 Turquoise - Light	162
7			DMC 721 Orange Spice - Medium	26
8			DMC 828 Sky Blue - Ultra Very Light	81
9			DMC BLANK White	154
10			DMC 747 Sky Blue - Very Light	543
11			DMC 775 Baby Blue - Very Light	39



# Christmas-themed design

N	Symbol	Number	Name	Stitches
12			DMC 807 Peacock Blue	449
13			DMC 3753 Antique Blue - Ultra Very Light	162
14			DMC 3761 Sky Blue - Light	104
15			DMC 3768 Gray Green - Dark	126
16			DMC B5200 Snow White	1450
17			DMC 501 Blue Green - Dark	3991
18			DMC 930 Antique Blue - Dark	912
19			DMC 964 Seagreen - Light	213
20			DMC 3810 Turquoise - Dark	165
21			DMC 3811 Turquoise - Very Light	100
22			DMC 3849 Teal Green - Light	287
23			DMC 3853 Autumn Gold - Dark	328