

# A tiger and its cub

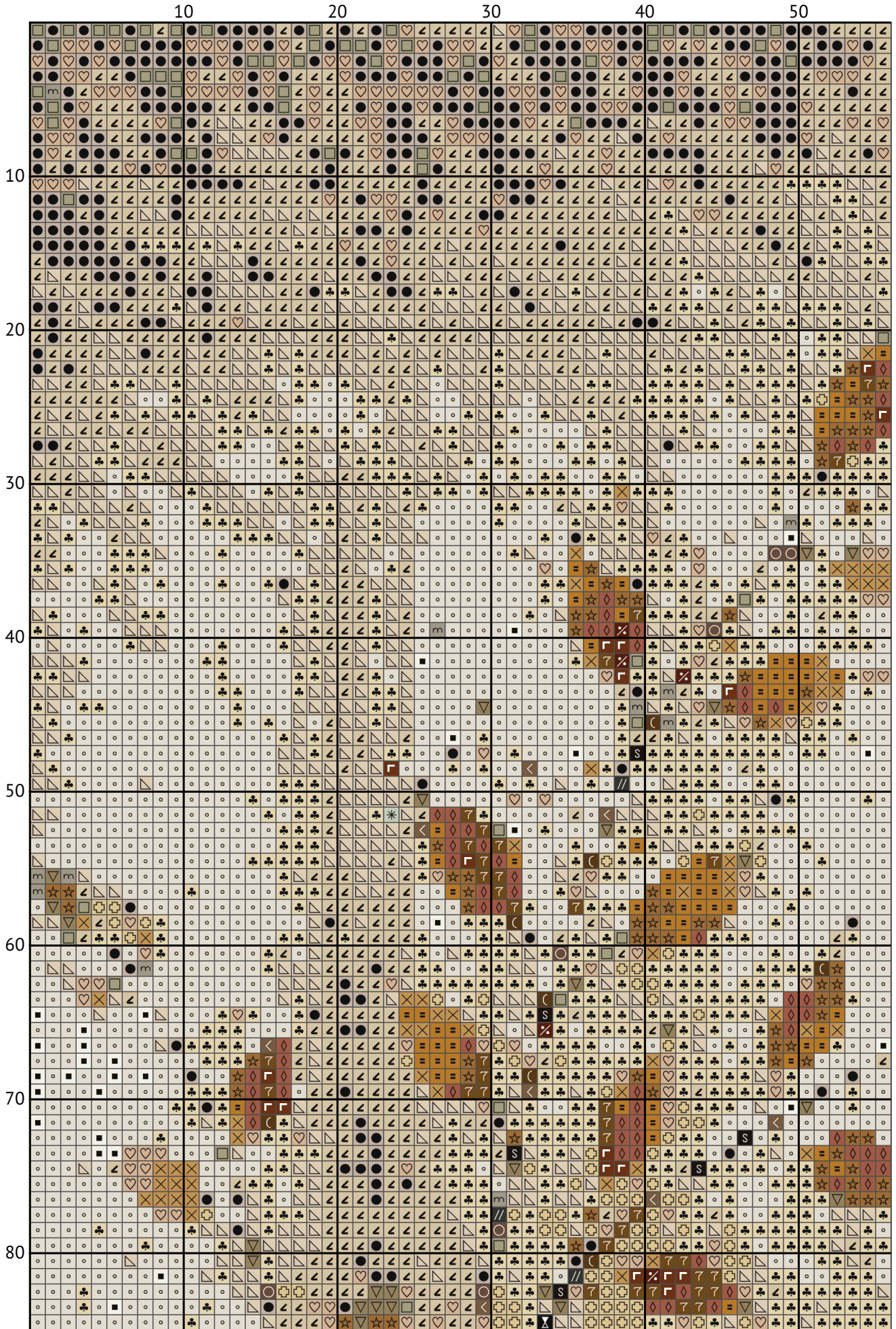
Cross stitch chart from [patterns.stitchingsecrets.com](https://patterns.stitchingsecrets.com)

---

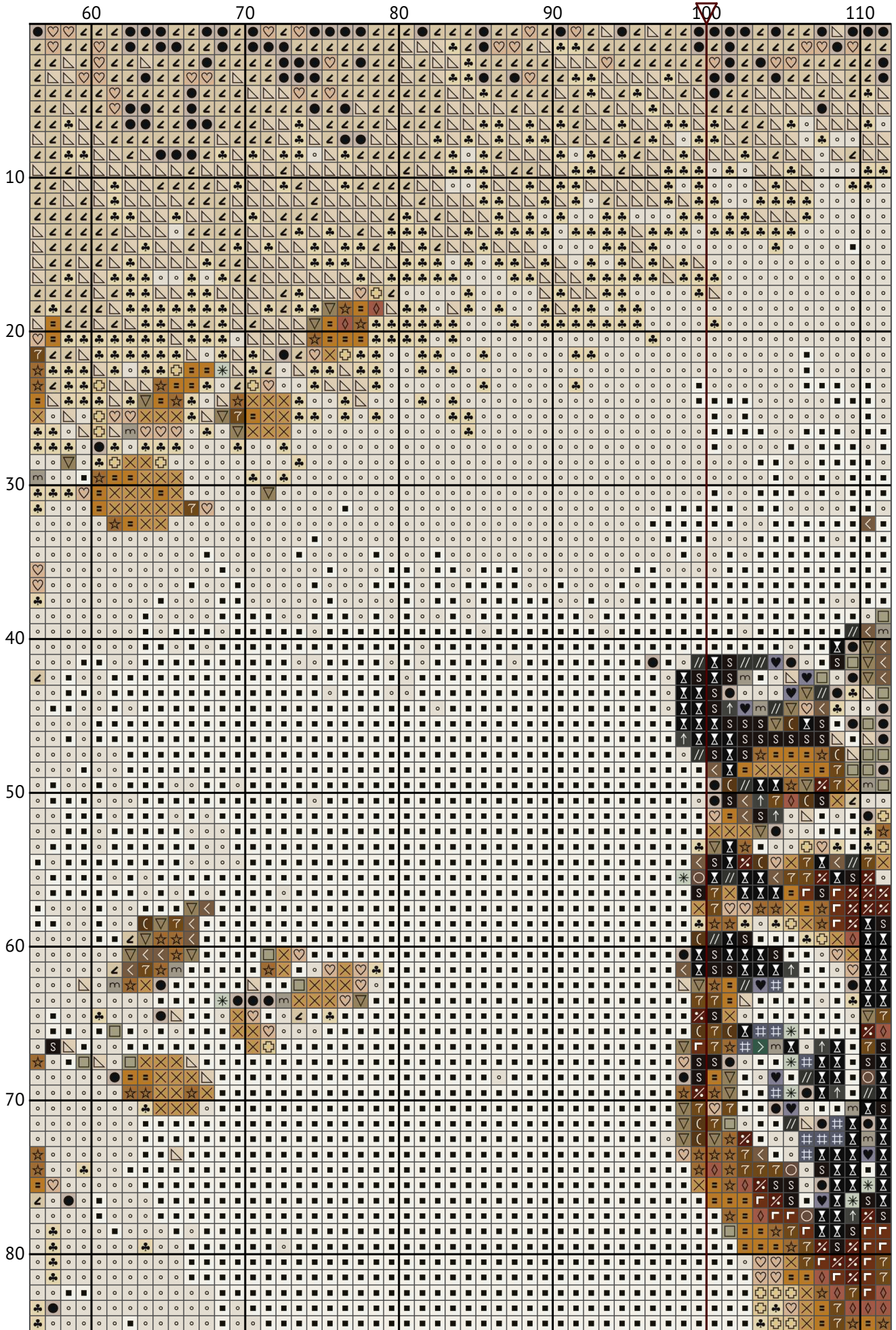


Design size: 200 x 200 stitches

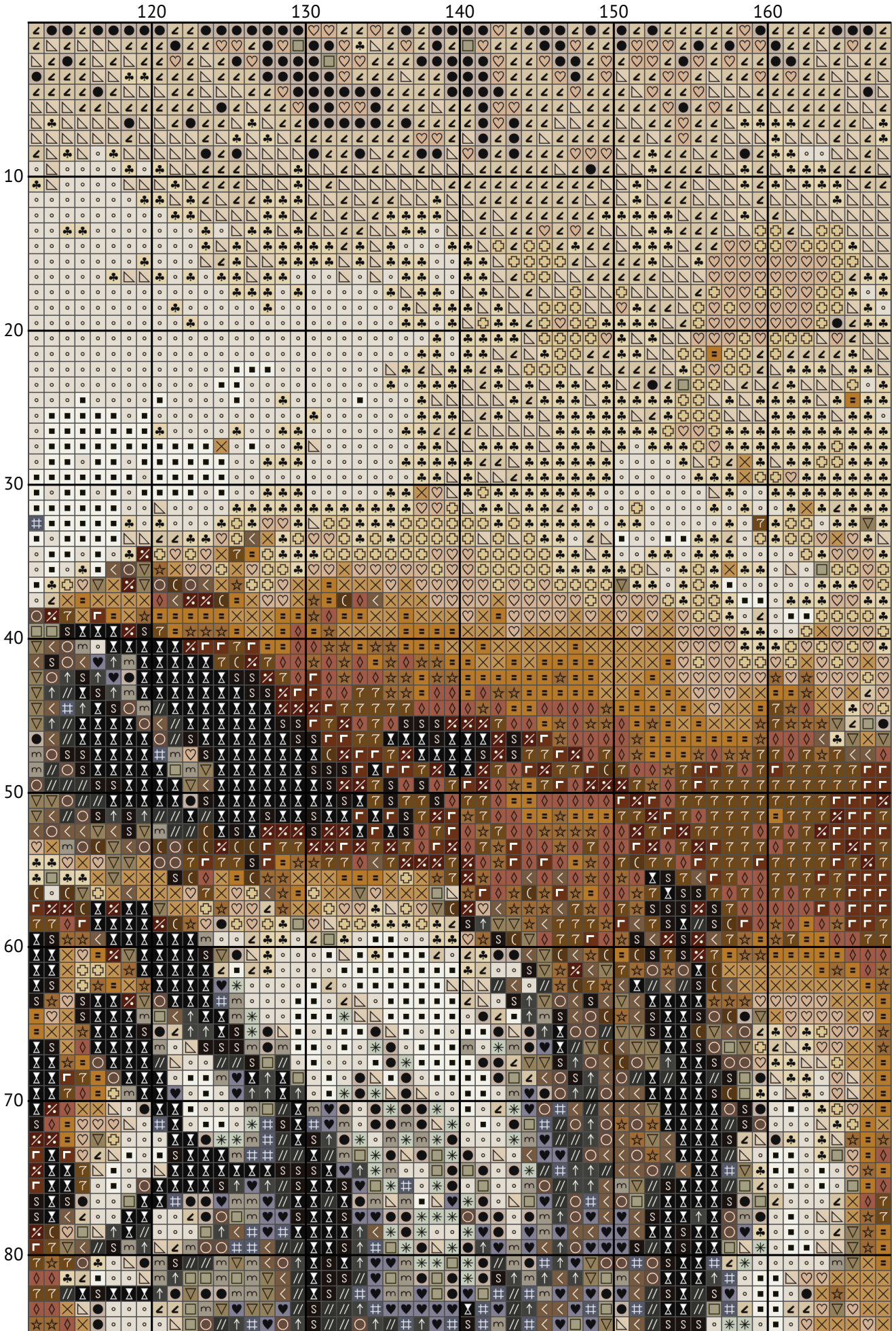
A tiger and its cub



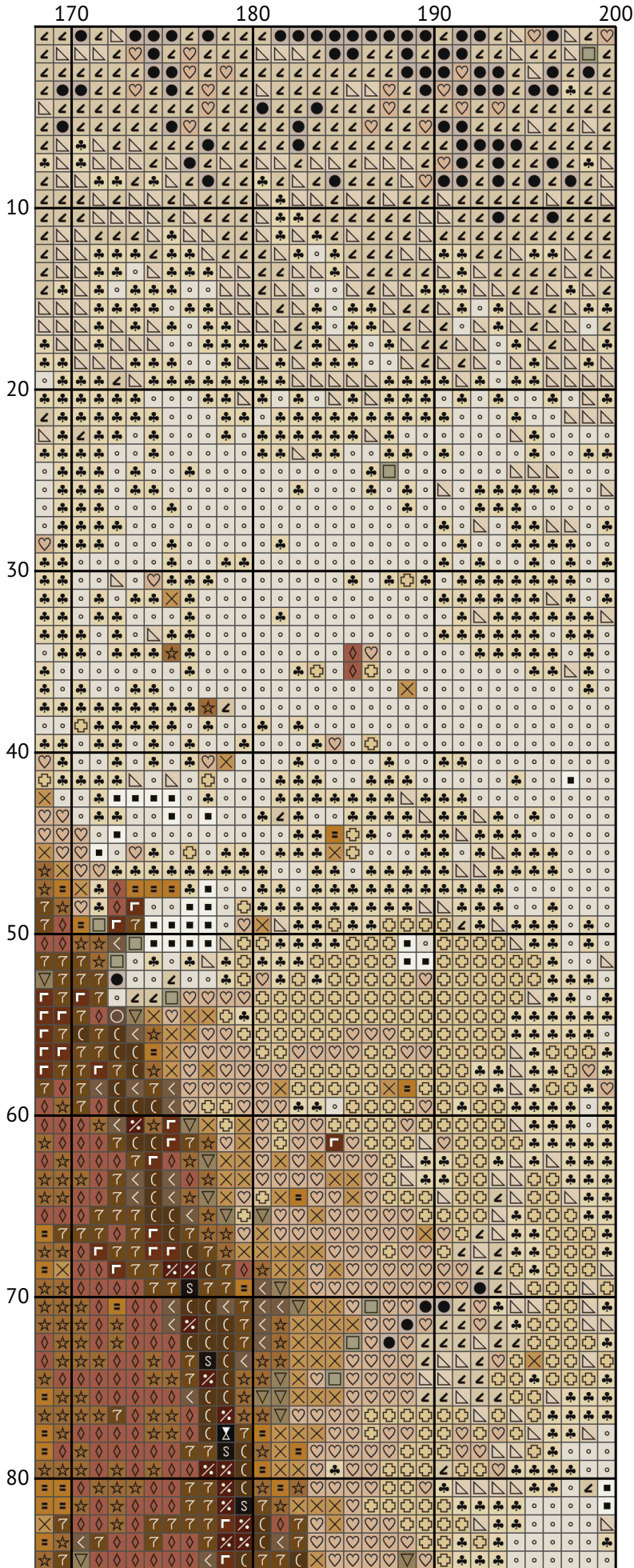
A tiger and its cub



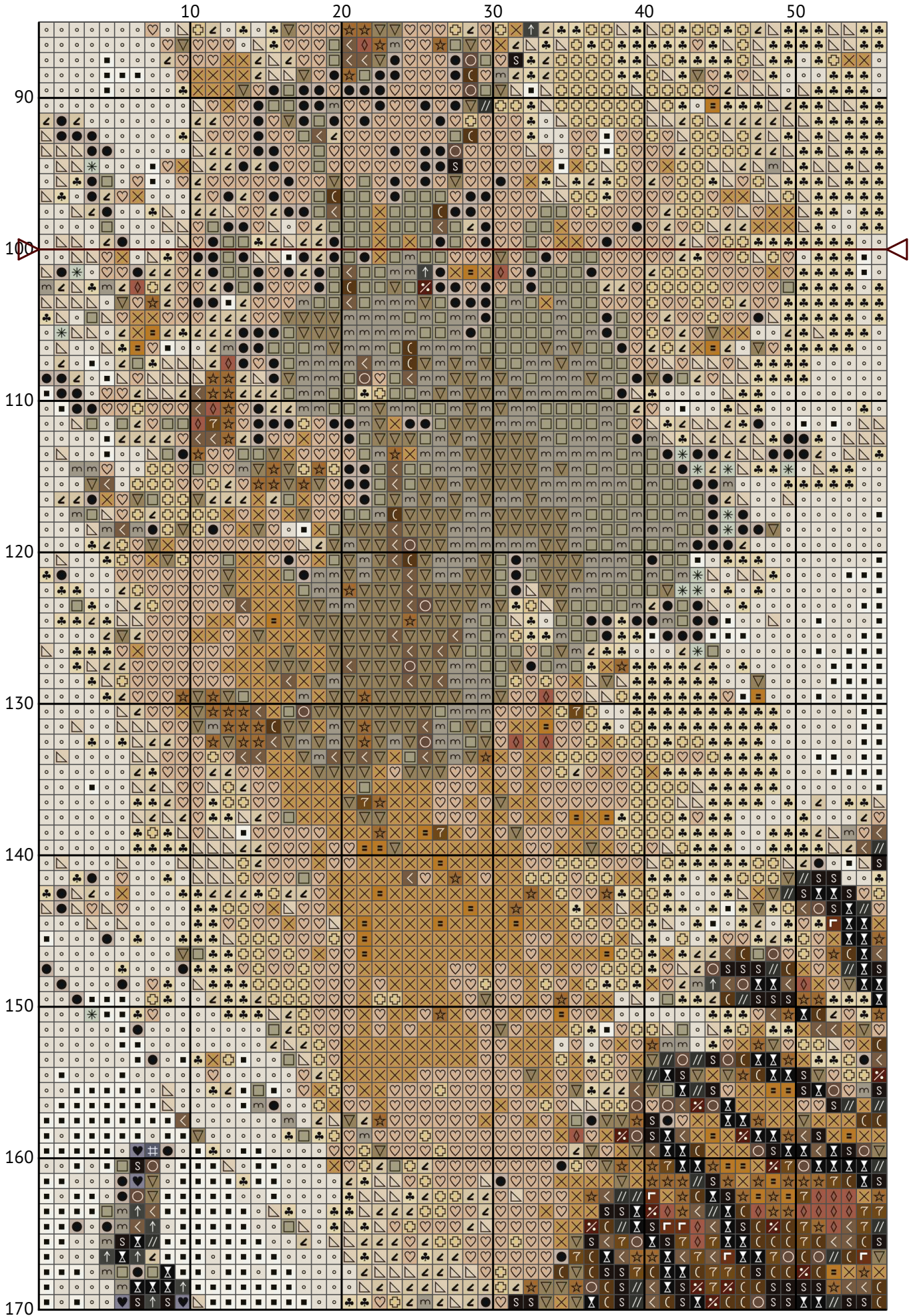
A tiger and its cub



A tiger and its cub



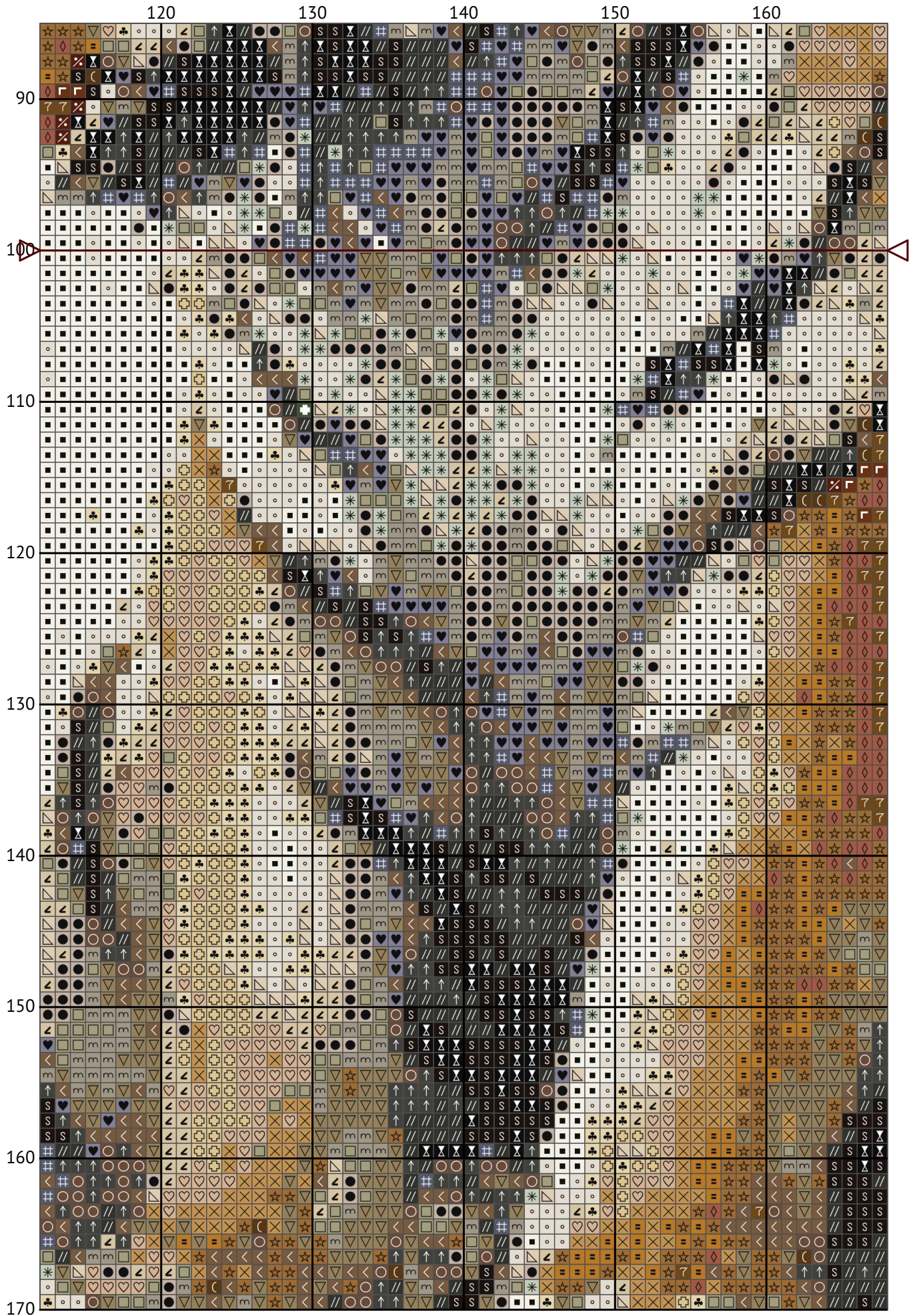
A tiger and its cub



A tiger and its cub

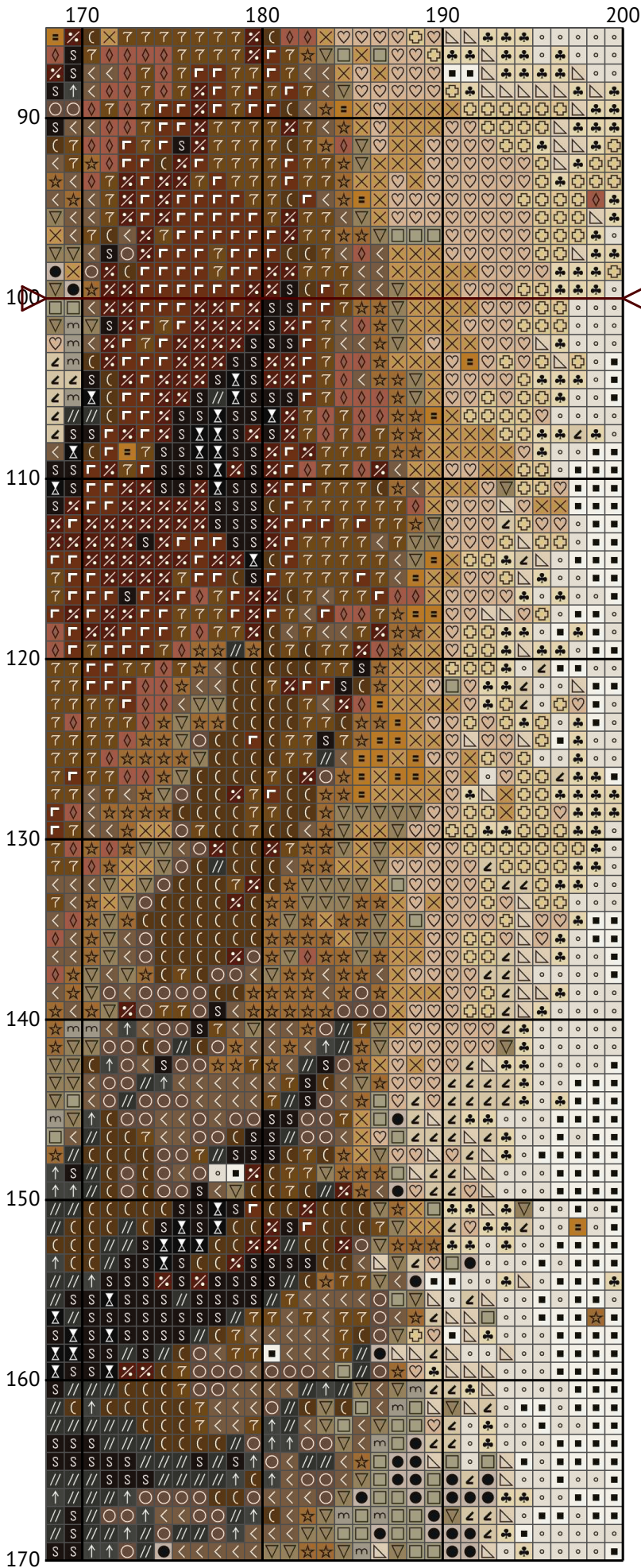


A tiger and its cub

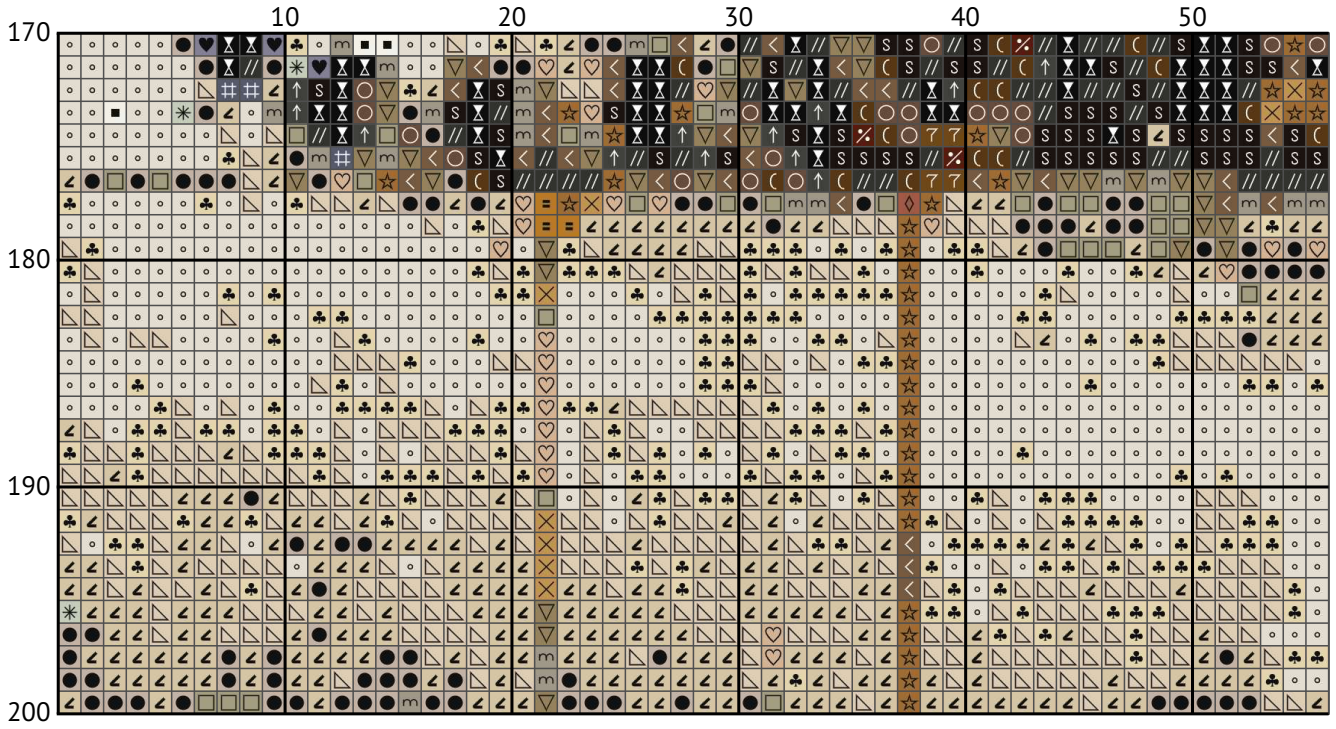




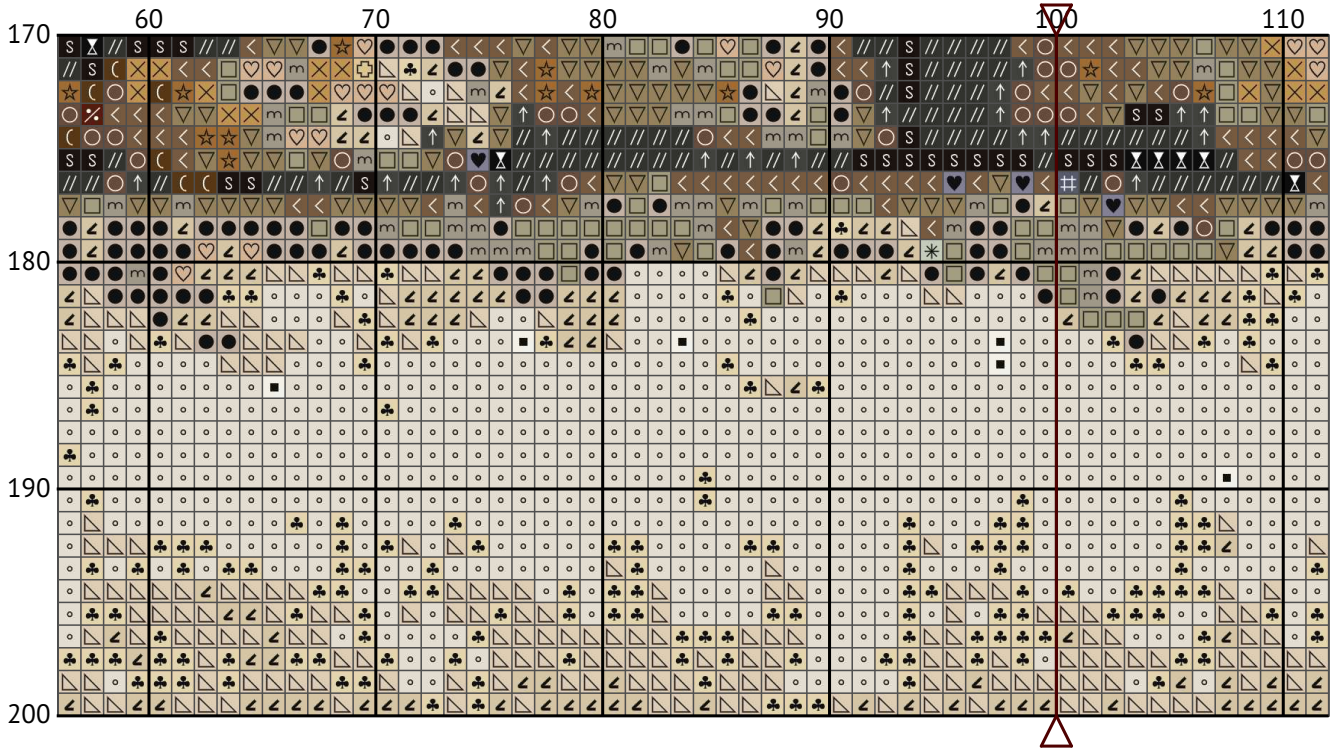
A tiger and its cub



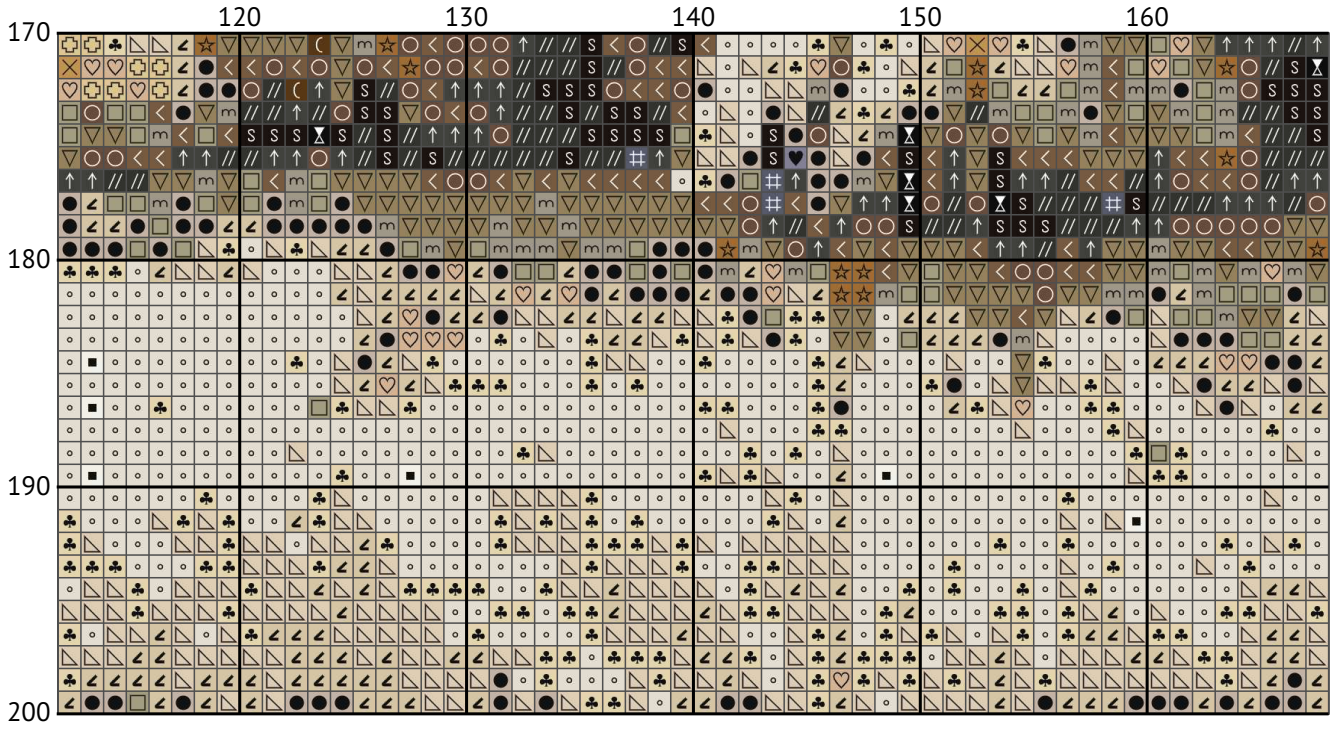
A tiger and its cub



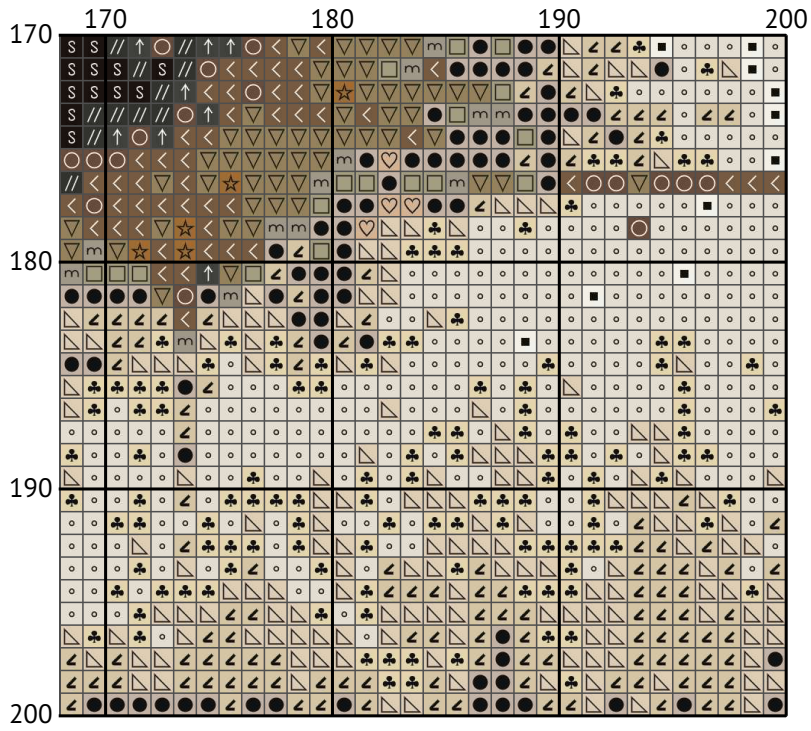
A tiger and its cub



A tiger and its cub



A tiger and its cub



## Floss list for crosses

### How to Convert Cross Stitch Pattern Sizes: A Step-by-Step Guide

When you download a cross stitch pattern, you'll often find the design size expressed in stitches, such as "Design size: 200 x 200 stitches." To determine the physical dimensions of your design, you need to know the fabric's thread count, typically referred to as the "count." In this guide, we'll walk you through converting stitch count to inches and centimeters for a 14-count Aida fabric.

### Understanding Fabric Count

The fabric count indicates how many threads (or squares) there are per inch. For example, a 14-count Aida fabric has 14 stitches per inch. This information is crucial for calculating the physical size of your cross stitch design.

### Example Calculation for 200 x 200 Stitches on 14-Count Aida

Given:

Design size: 200 x 200 stitches

Fabric count: 14-count Aida

Steps to Calculate:

Calculate the size in inches:

Width:  $200 \text{ stitches} \div 14 \text{ stitches per inch} = 14.29 \text{ inches}$

Height:  $200 \text{ stitches} \div 14 \text{ stitches per inch} = 14.29 \text{ inches}$

Convert inches to centimeters (1 inch = 2.54 cm):

Width:  $14.29 \text{ inches} \times 2.54 \text{ cm/inch} = 36.30 \text{ cm}$

Height:  $14.29 \text{ inches} \times 2.54 \text{ cm/inch} = 36.30 \text{ cm}$

Summary of Dimensions for 14-Count Aida

















Width: 14.29 inches (36.30 cm)

Height: 14.29 inches (36.30 cm)







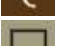





Conclusion

By following these steps, you can easily convert any design size in stitches to its physical dimensions in inches or centimeters based on the fabric count you are using. This ensures that your finished cross stitch piece will fit perfectly in your chosen frame or display area.

Happy stitching!

N	Symbol	Number	Name	Stitches
1	 	DMC ECRU	Ecru	3679
2	 	DMC 05	Driftwood - Light	1686
3	 	DMC 08	Driftwood - Dark	503
4	 	DMC 167	Yellow Beige - Very Dark	960
5	 	DMC 300	Mahogany - Very Dark	339
6	 	DMC 310	Black	1089
7	 	DMC 317	Pewter Gray	194
8	 	DMC 318	Steel Gray - Light	312

A tiger and its cub

N	Symbol	Number	Name	Stitches
9			DMC 422 Hazelnut Brown - Light	1404
10			DMC 433 Brown - Medium	384
11			DMC 501 Blue Green - Dark	1
12			DMC 535 Ash Gray - Very Light	460
13			DMC 543 Beige - Ultra Very Light	2093
14			DMC 648 Beaver Gray - Light	771
15			DMC 729 Old Gold - Medium	535
16			DMC 739 Tan - Ultra Very Light	1182
17			DMC 822 Beige Gray - Light	2922
18			DMC 829 Golden Olive - Very Dark	703
19			DMC 869 Hazelnut Brown - Very Dark	423
20			DMC 3023 Brown Gray - Light	895
21			DMC 3032 Mocha Brown - Medium	1244
22			DMC 3033 Mocha Brown - Very Light	3274
23			DMC 3072 Beaver Gray - Very Light	216
24			DMC 3362 Pine Green - Dark	2
25			DMC 3371 Black Brown	944
26			DMC 3772 Desert Sand - Very Dark	554
27			DMC 3790 Beige Gray - Ultra Dark	886
28			DMC 3799 Pewter Gray - Very Dark	798
29			DMC 3865 Winter White	4603
30			DMC 3866 Mocha - Ultra Very Light	6944