

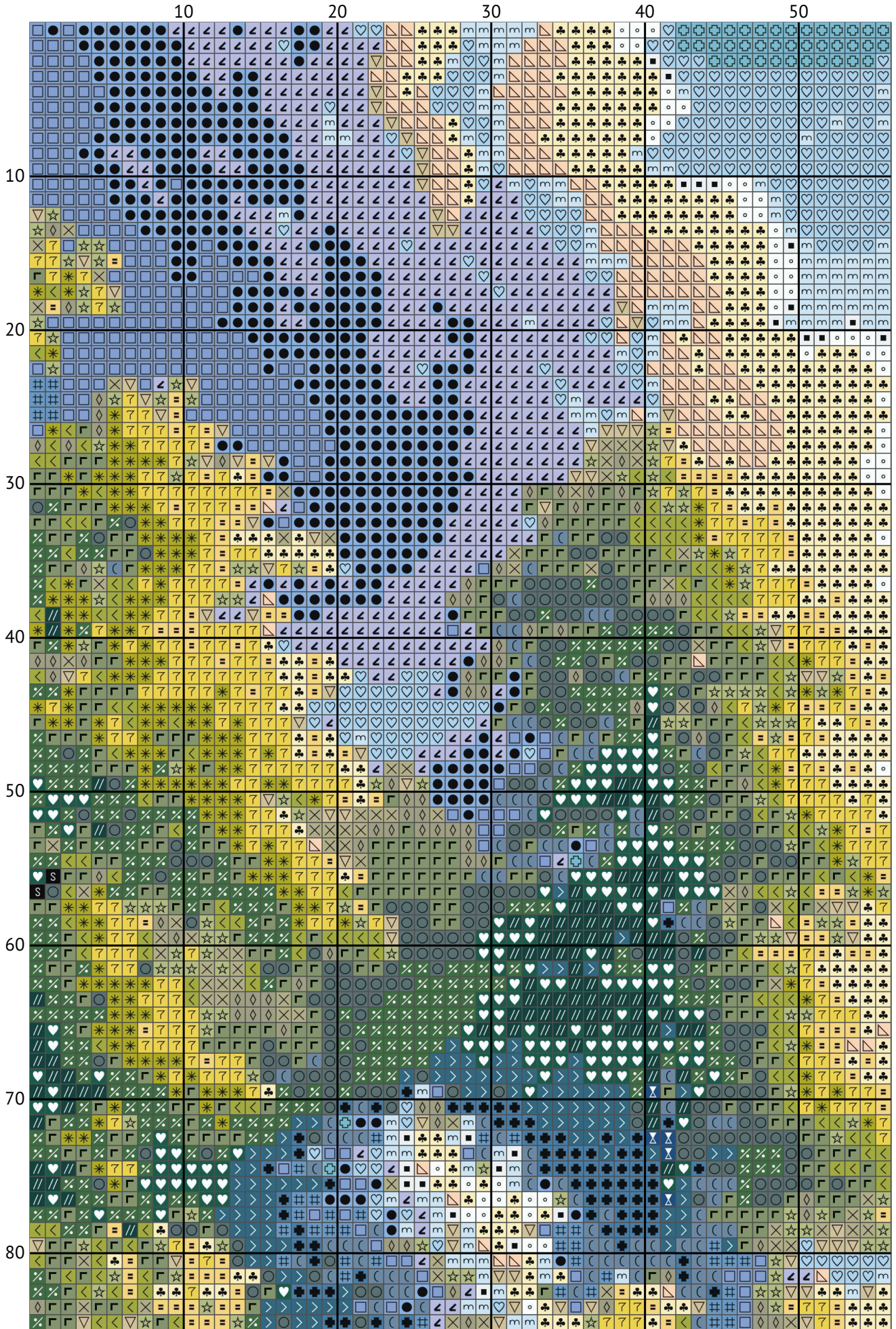
A swan

Cross stitch patterns from csp.beehiiv.com

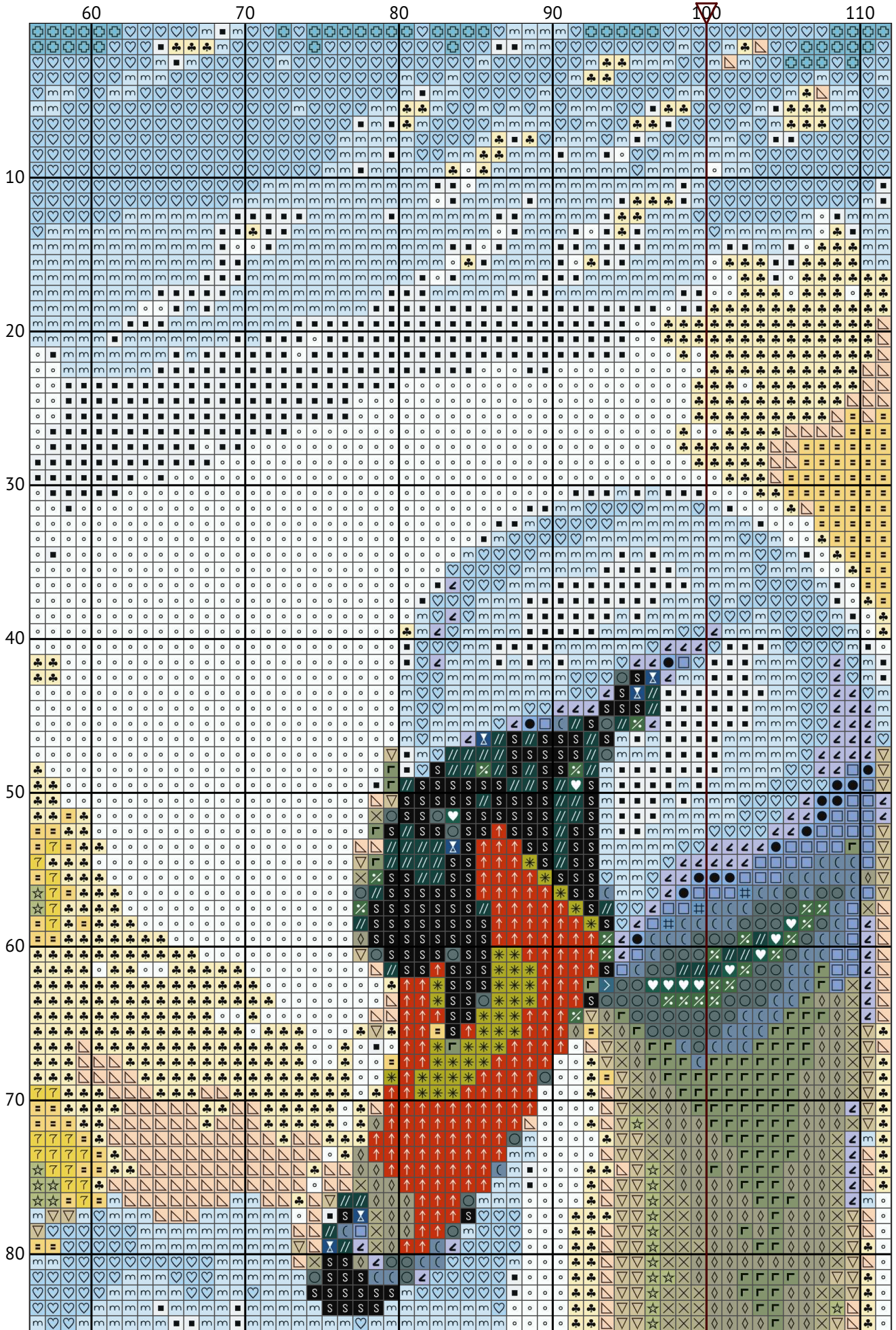


Design size: 200 x 200 stitches

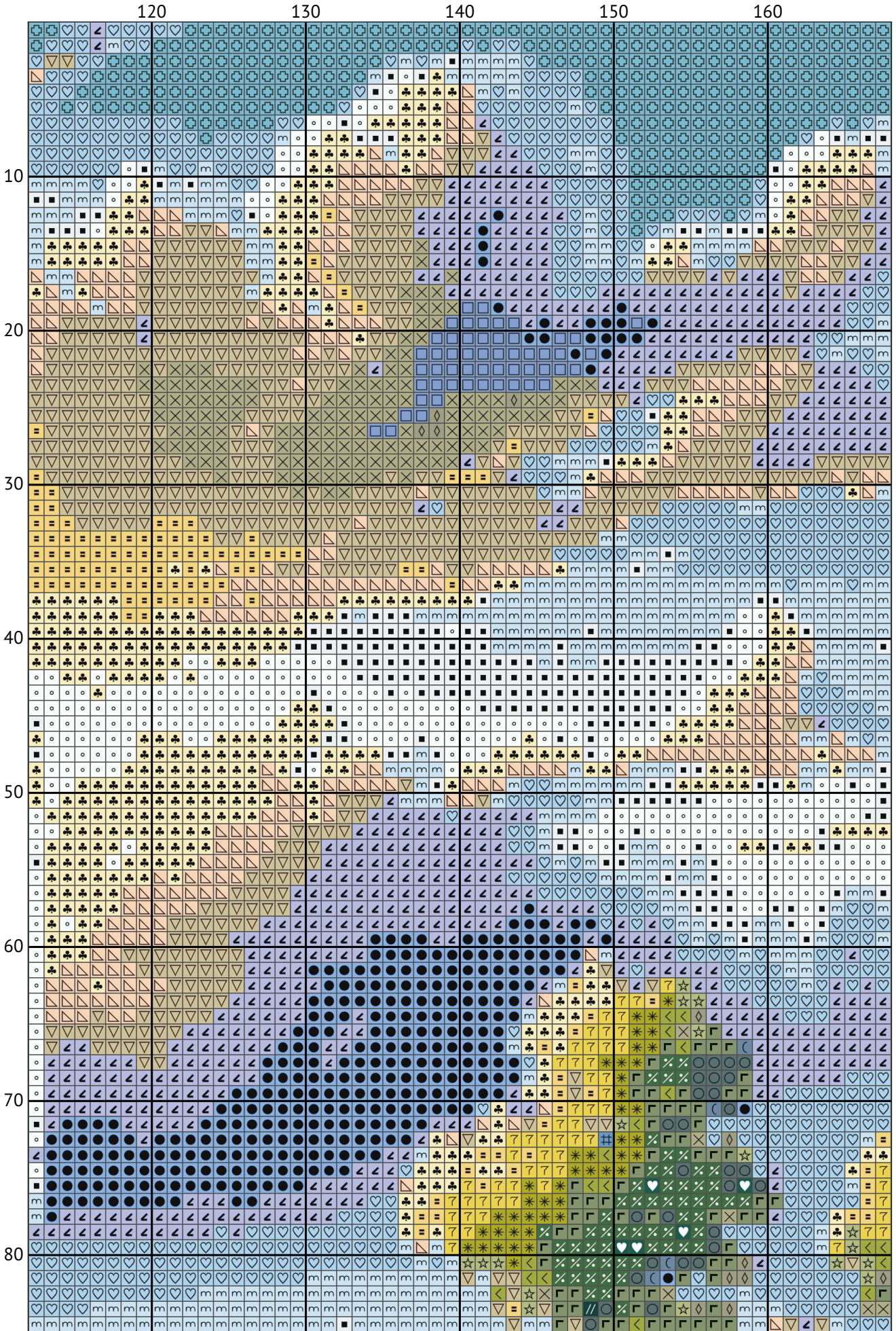
A swan



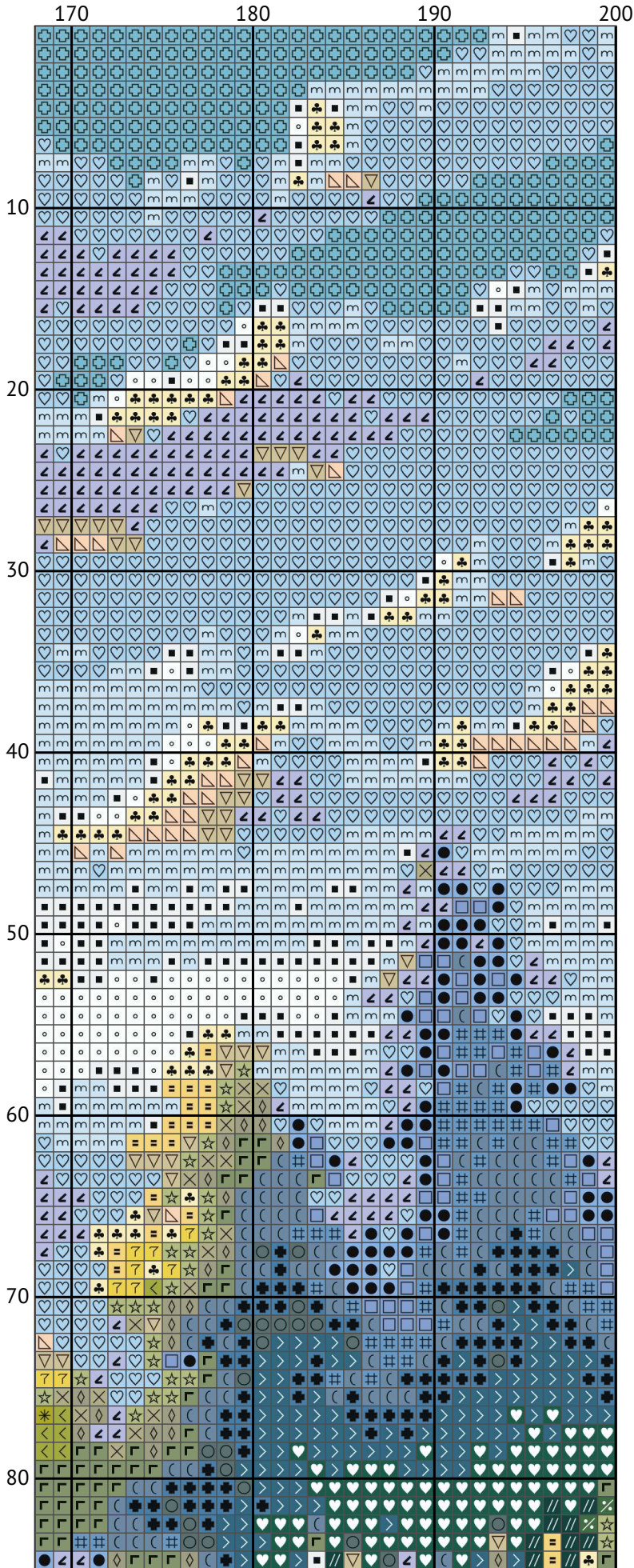
A swan



A swan



A swan



A swan

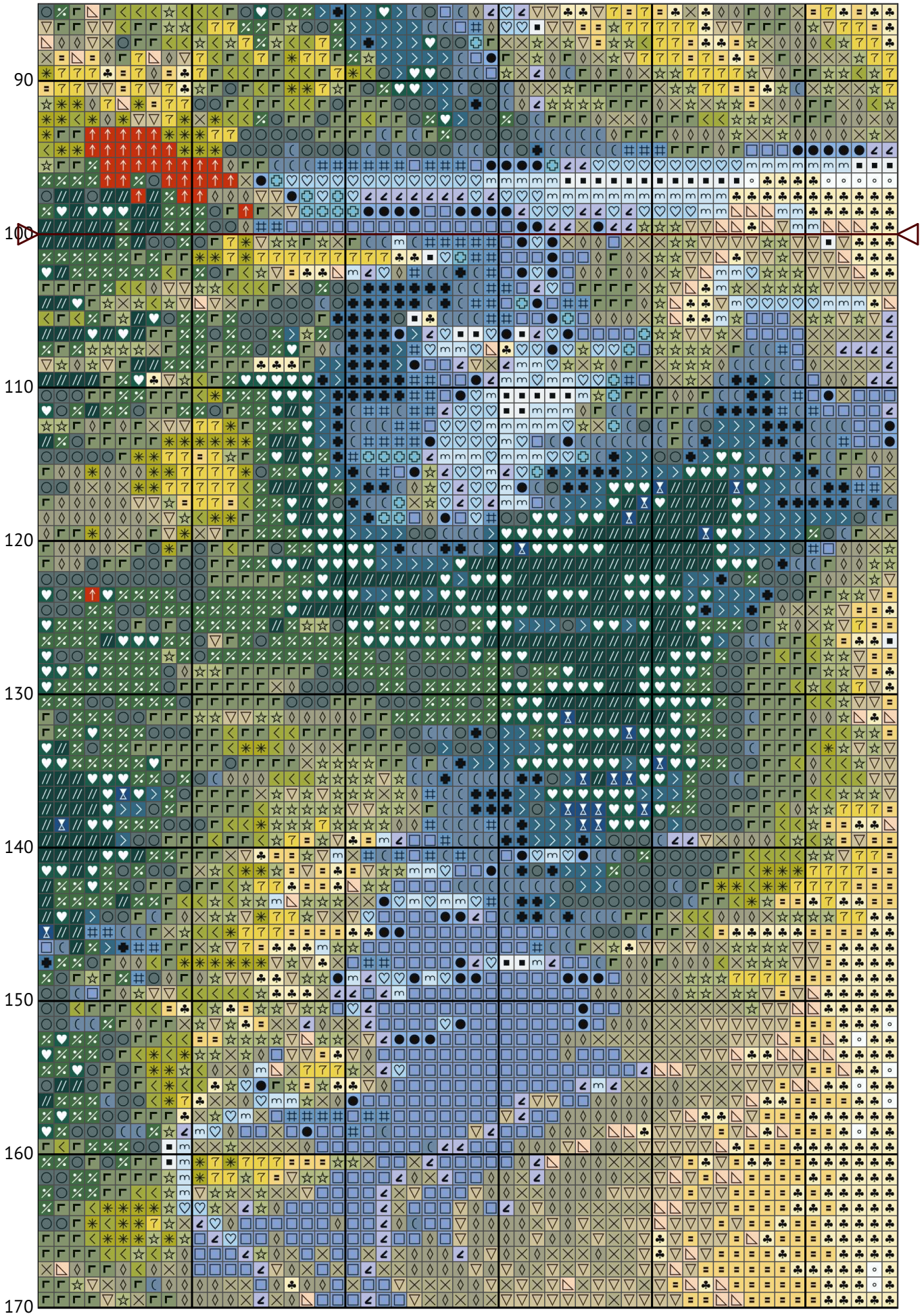
10

20

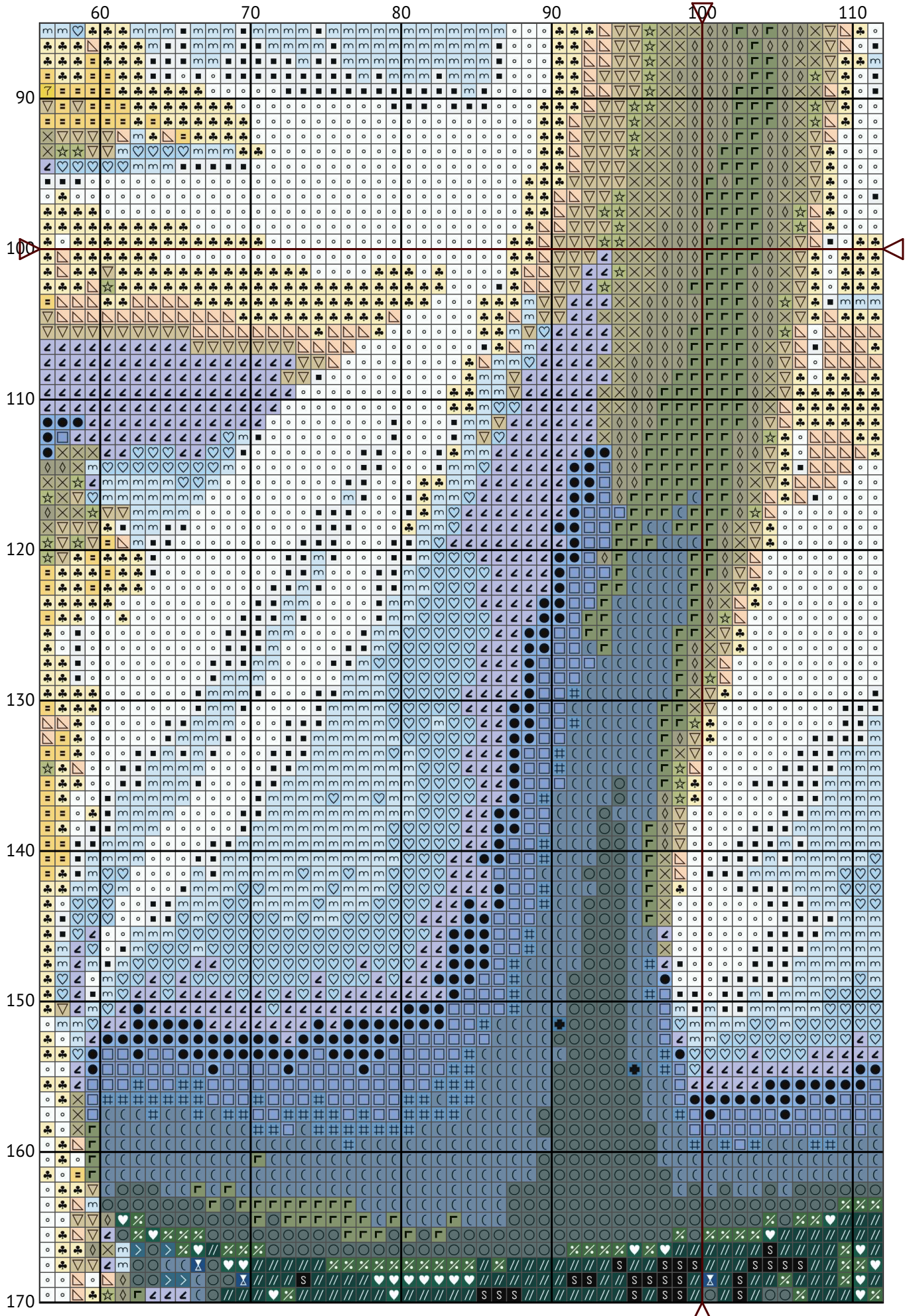
30

40

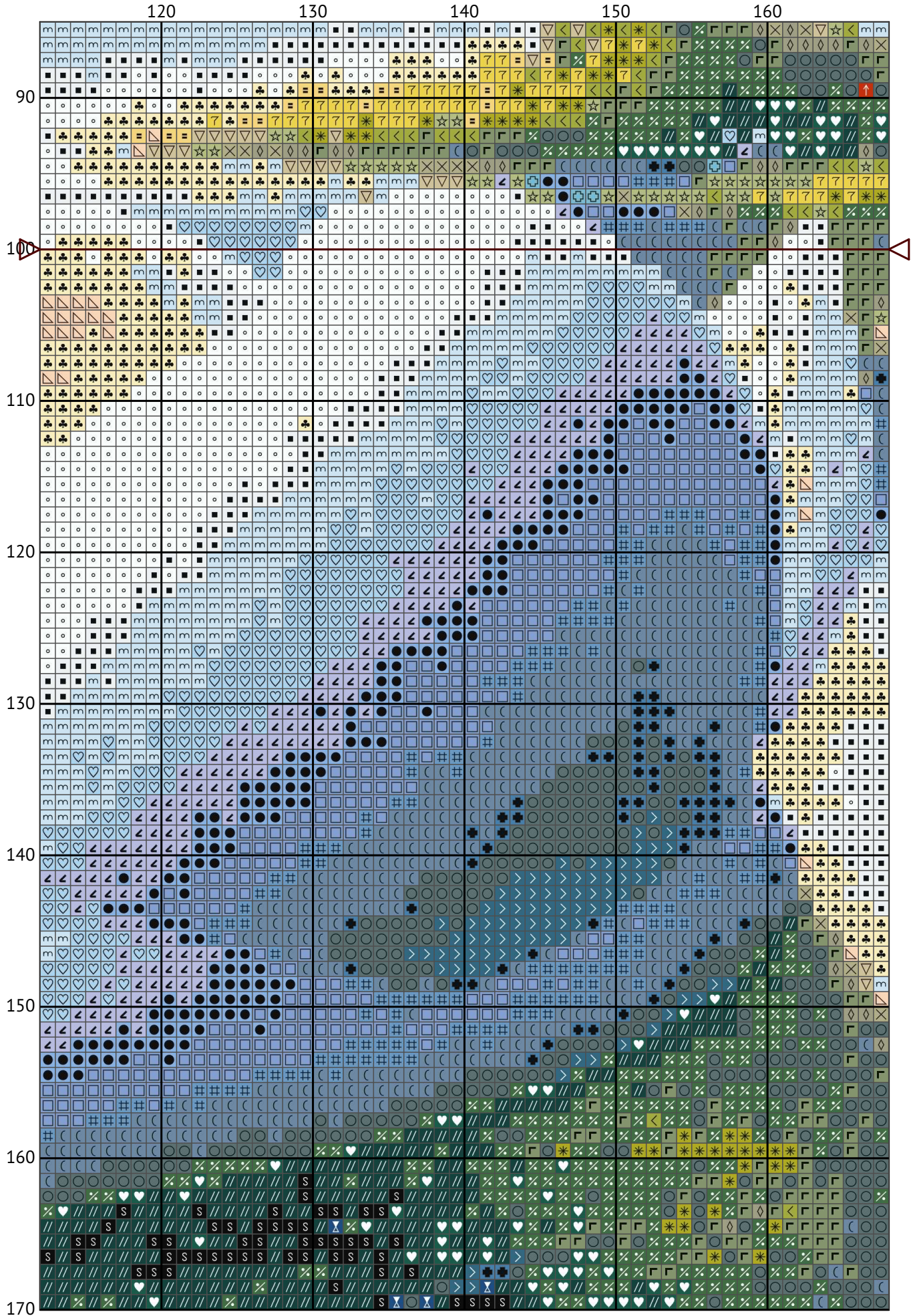
50



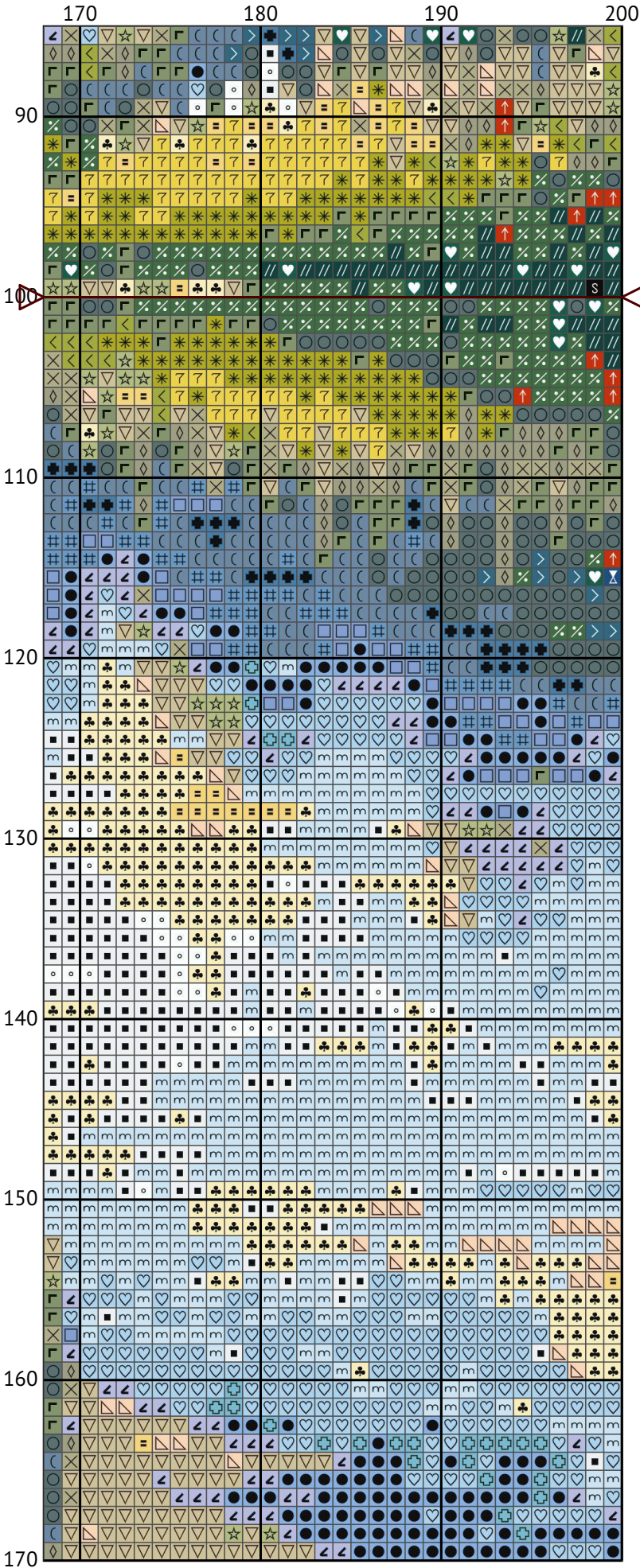
A swan



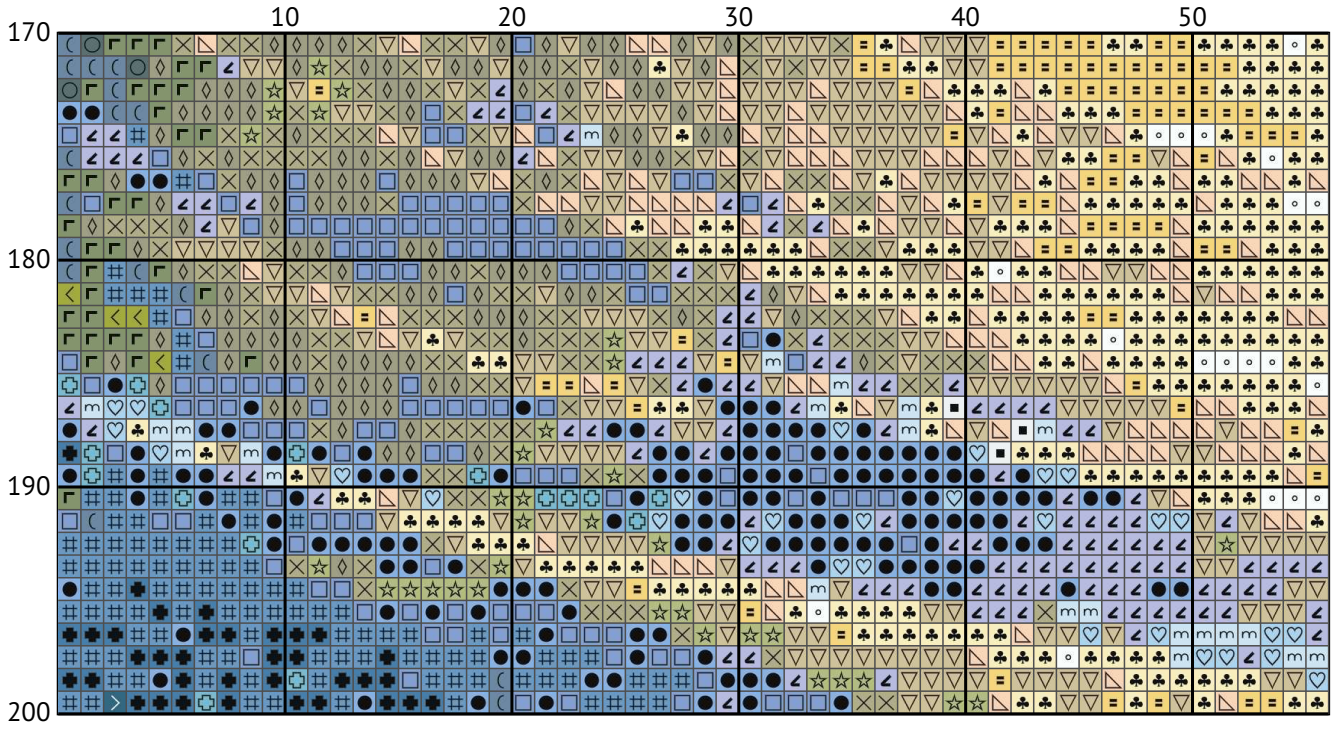
A swan



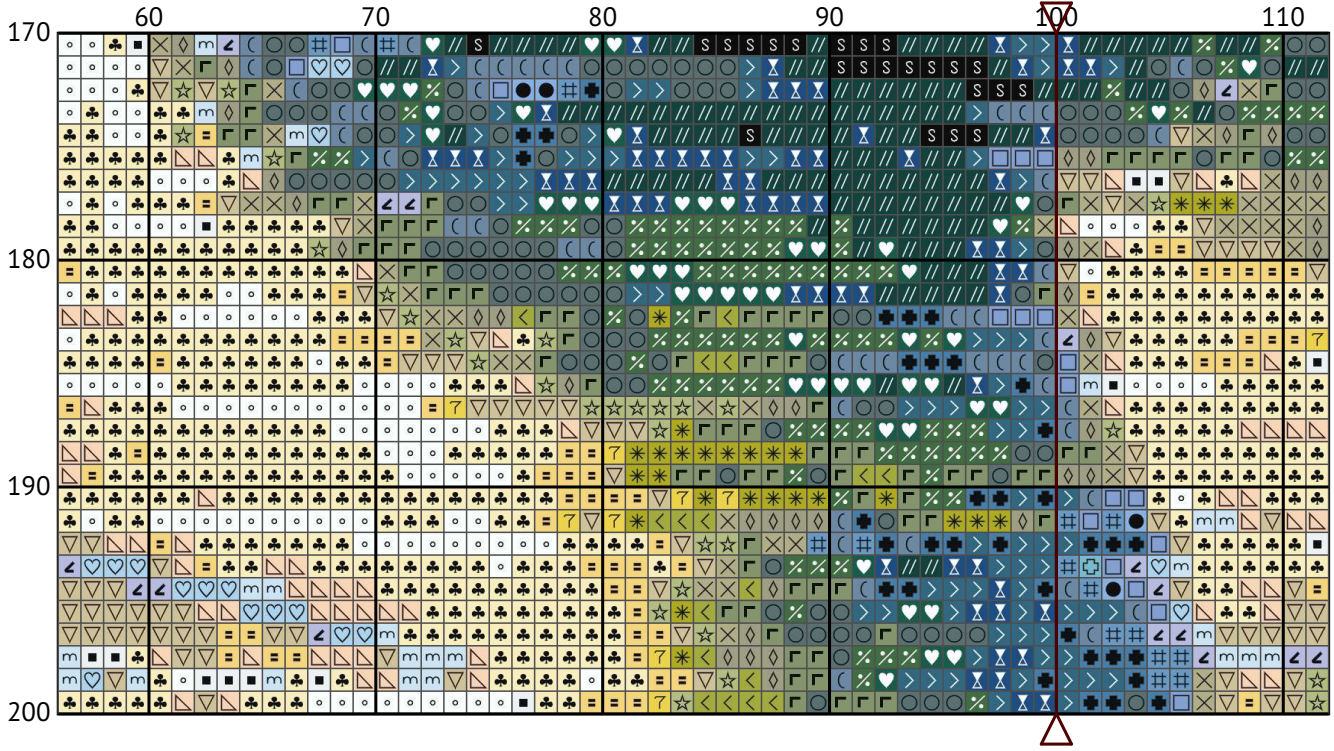
A swan



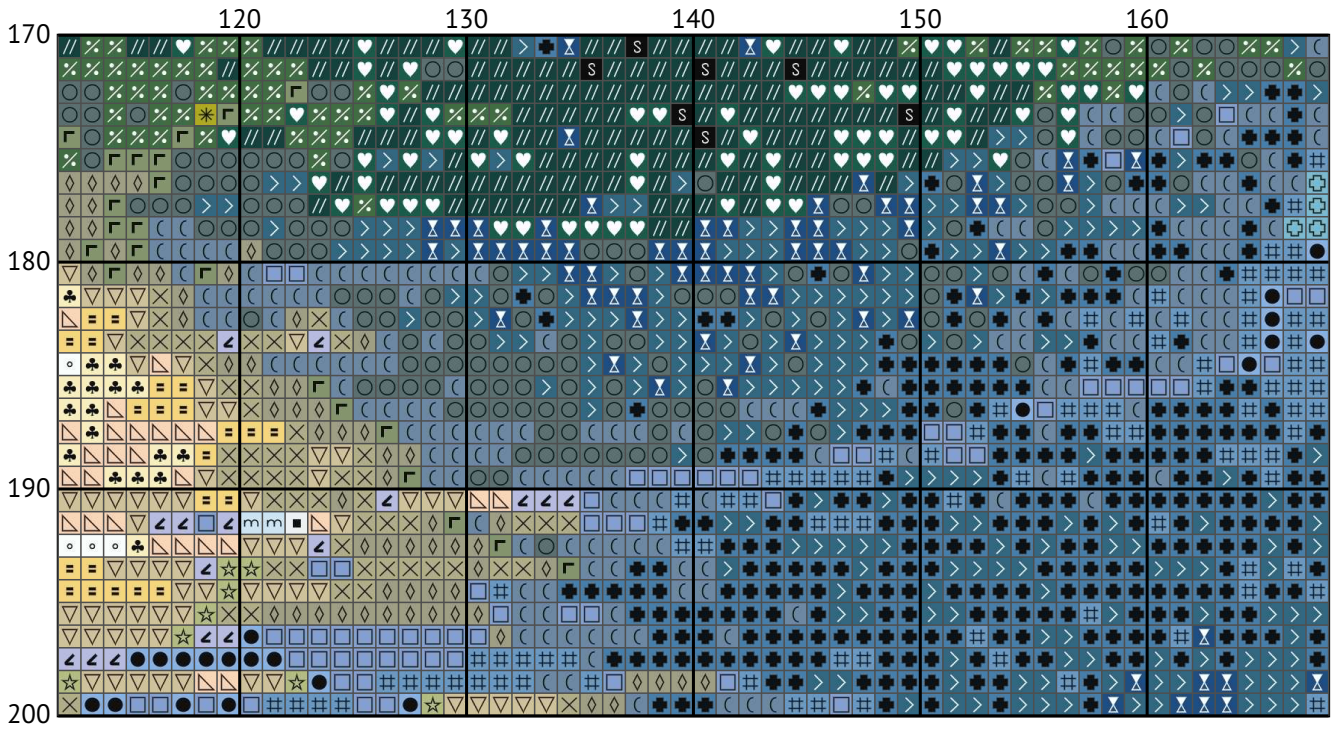
A swan



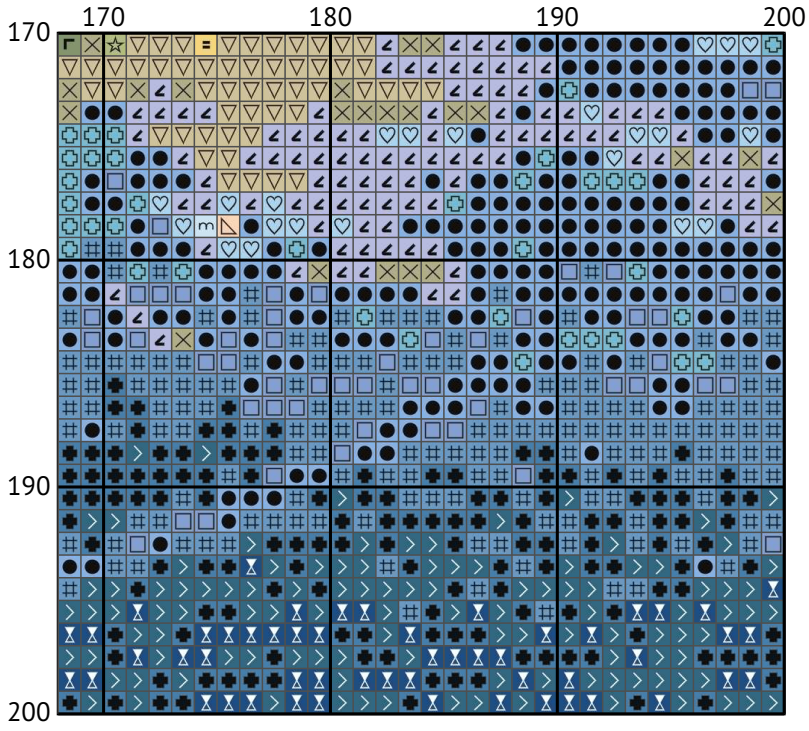
A swan



A swan



A swan



Floss list for crosses

To calculate the size of a cross stitch design for a pattern that is 200 x 200 stitches, assuming you are using 14-count fabric, here's the process:

Identify the Fabric Count: We'll use 14-count fabric, which means there are 14 stitches per inch.

Calculate the Size in Inches:

For both width and height: Divide the number of stitches (200) by the fabric count (14). So, 200 stitches / 14 stitches per inch = approximately 14.29 inches.

Calculate the Size in Centimeters:

Convert inches to centimeters (1 inch = 2.54 cm).





















For both width and height: 14.29 inches * 2.54 cm/inch = approximately 36.27 centimeters.

Therefore, for a 200 x 200 stitch pattern on 14-count fabric, the design will approximately measure 14.29 inches (36.27 cm) in both width and height.

Remember to include extra fabric around the edges for framing or finishing your cross stitch project

N	Symbol	Number	Name	Stitches
1			DMC 17 Yellow Plum - Light	627
2			DMC BLANK White	1652
3			DMC B5200 Snow White	3072
4			DMC 157 Cornflower Blue - Very Light	1581
5			DMC 162 Blue - Ultra Very Light	3320
6			DMC 166 Moss Green - Medium Light	559
7			DMC 310 Black	256
8			DMC 367 Pistachio Green - Dark	1313
9			DMC 472 Avocado Green - Ultra Light	377
10			DMC 518 Wedgwood - Light	873
11			DMC 519 Sky Blue	876
12			DMC 523 Fern Green - Light	1589
13			DMC 524 Fern Green - Very Light	1008
14			DMC 613 Drab Brown - Very Light	1754
15			DMC 647 Beaver Gray - Medium	1017
16			DMC 720 Orange Spice - Dark	193
17			DMC 745 Yellow - Light Pale	778
18			DMC 746 Off White	3086
19			DMC 772 Yellow Green - Very Light	674
20			DMC 926 Gray Green - Medium	1703

A swan

N	Symbol	Number	Name	Stitches
21		 DMC 932	Antique Blue - Light	1652
22		 DMC 991	Aquamarine - Dark	744
23		 DMC 3325	Baby Blue - Light	1704
24		 DMC 3747	Blue Violet - Very Light	2370
25		 DMC 3753	Antique Blue - Ultra Very Light	3118
26		 DMC 3765	Peacock Blue - Very Dark	223
27		 DMC 3766	Peacock Blue - Light	775
28		 DMC 3774	Desert Sand - Very Light	1196
29		 DMC 3810	Turquoise - Dark	860
30		 DMC 3847	Teal Green - Dark	1050