

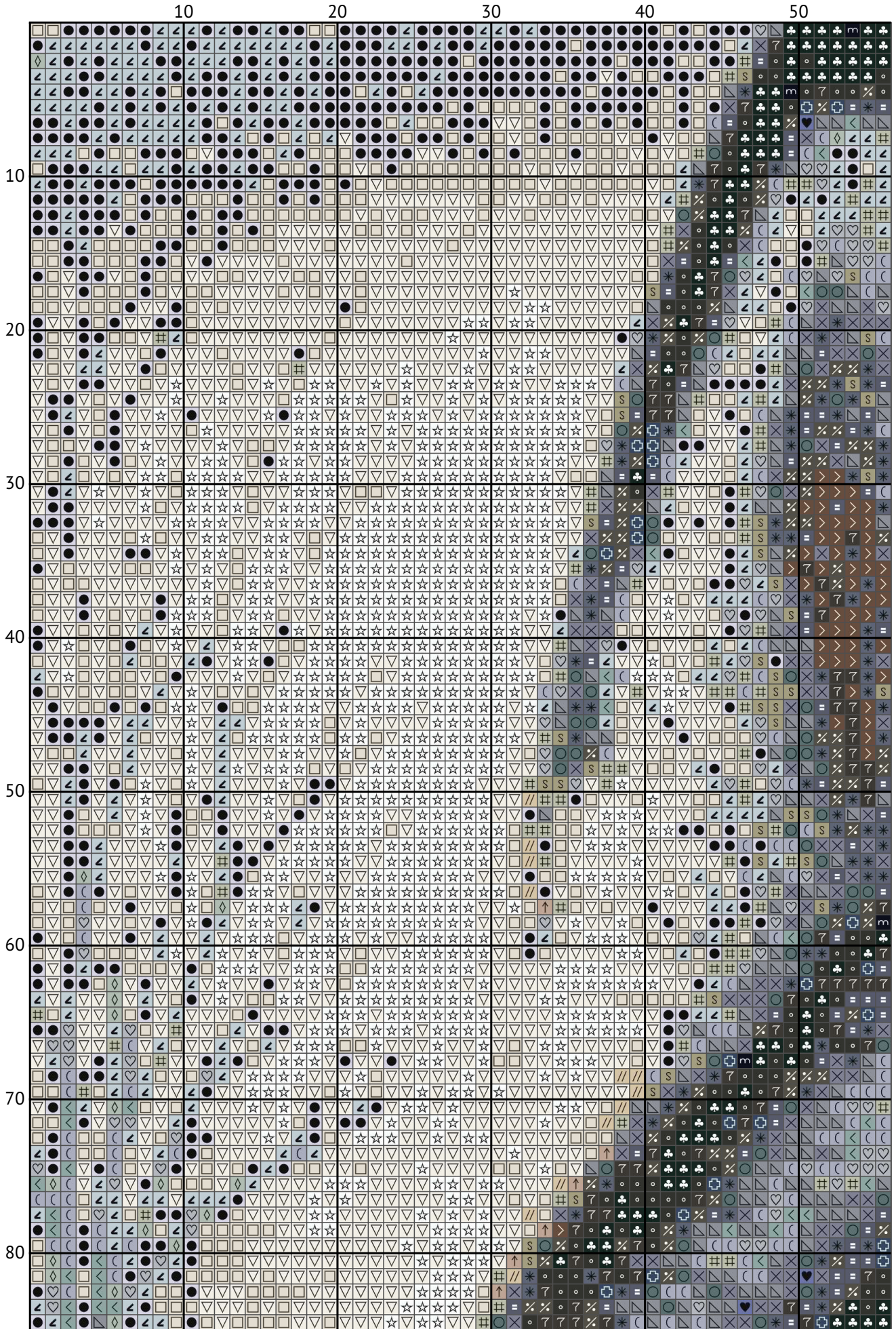
A majestic Siberian Husky

Cross stitch chart from patterns.stitchingsecrets.com

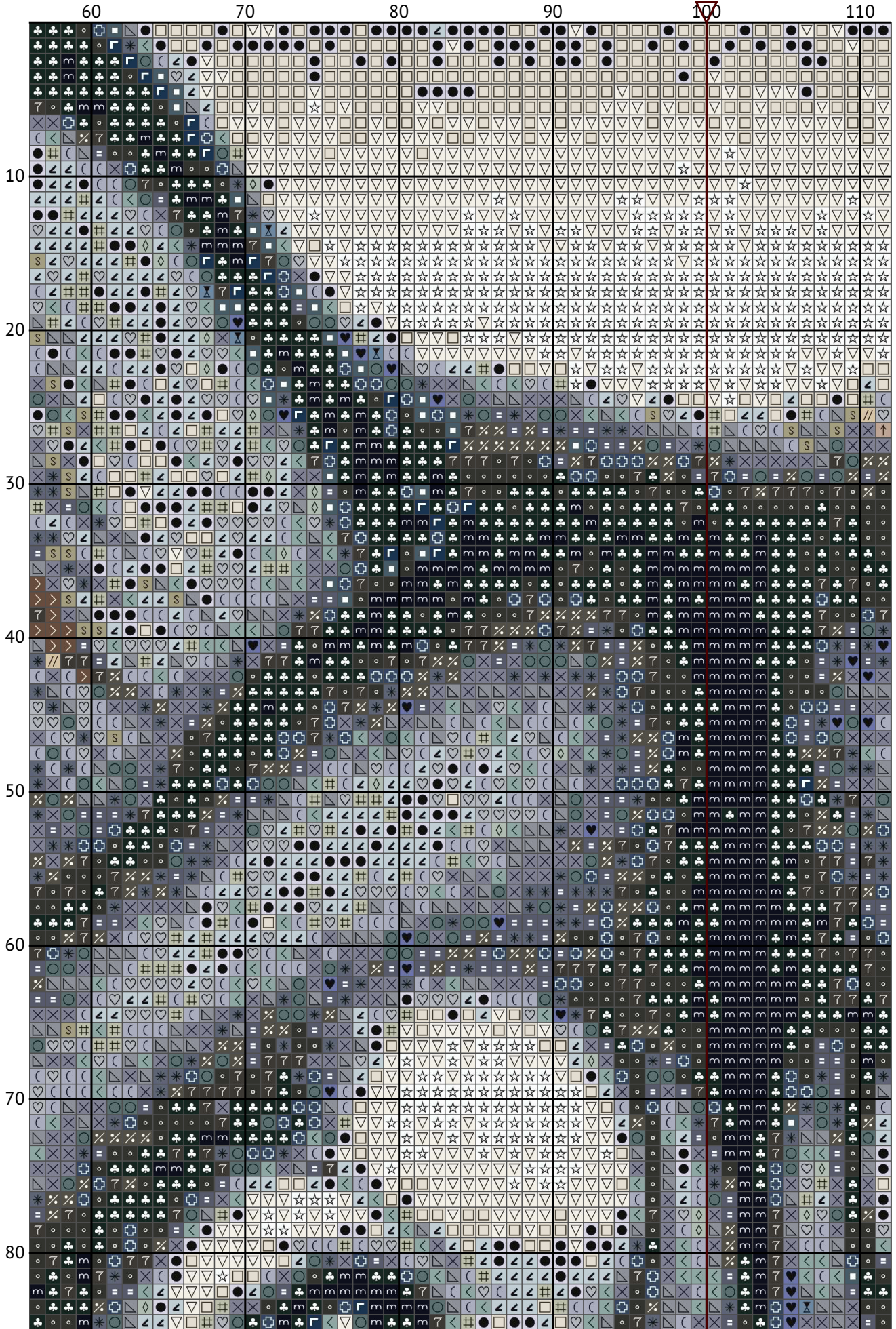


Design size: 200 x 200 stitches

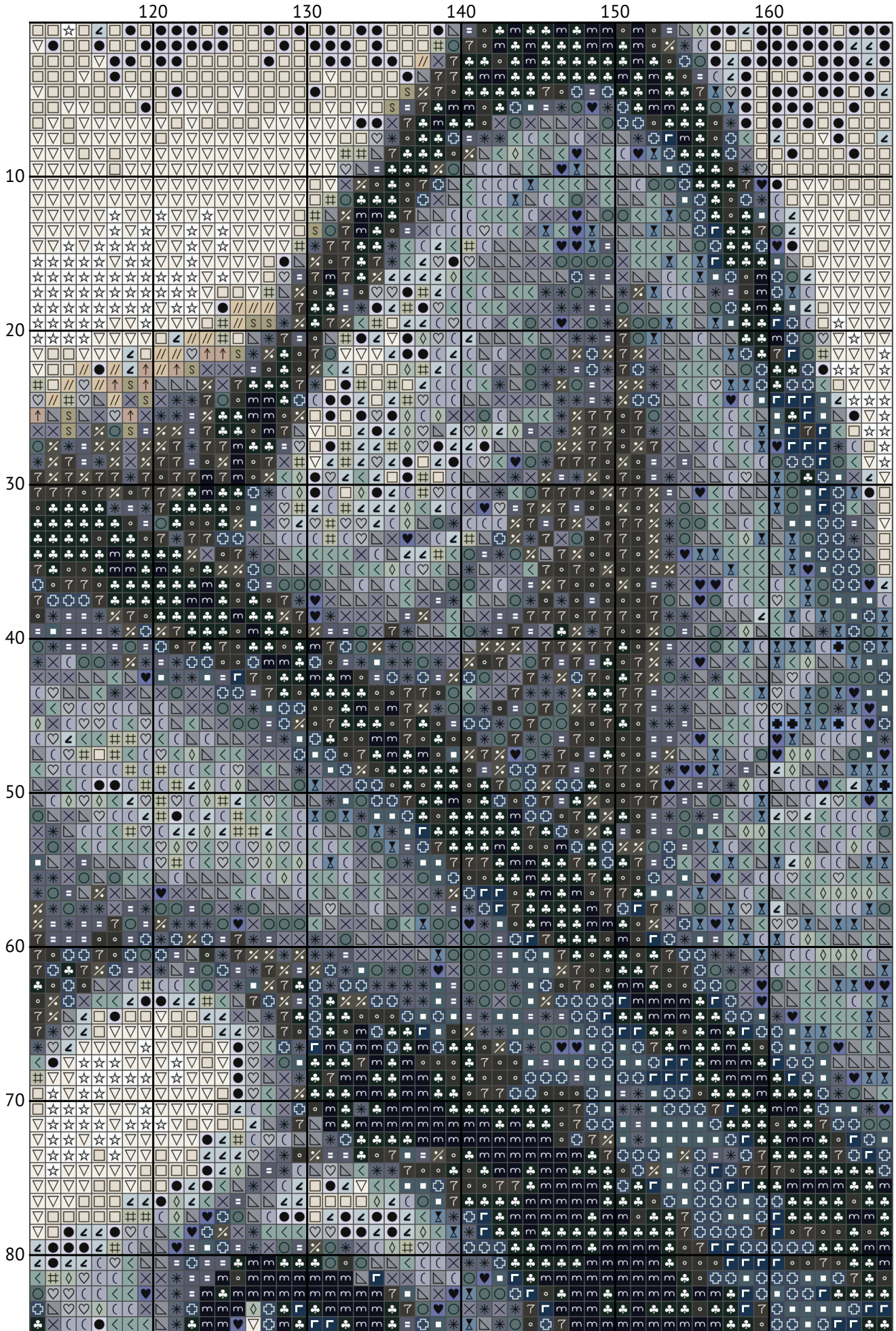
A majestic Siberian Husky



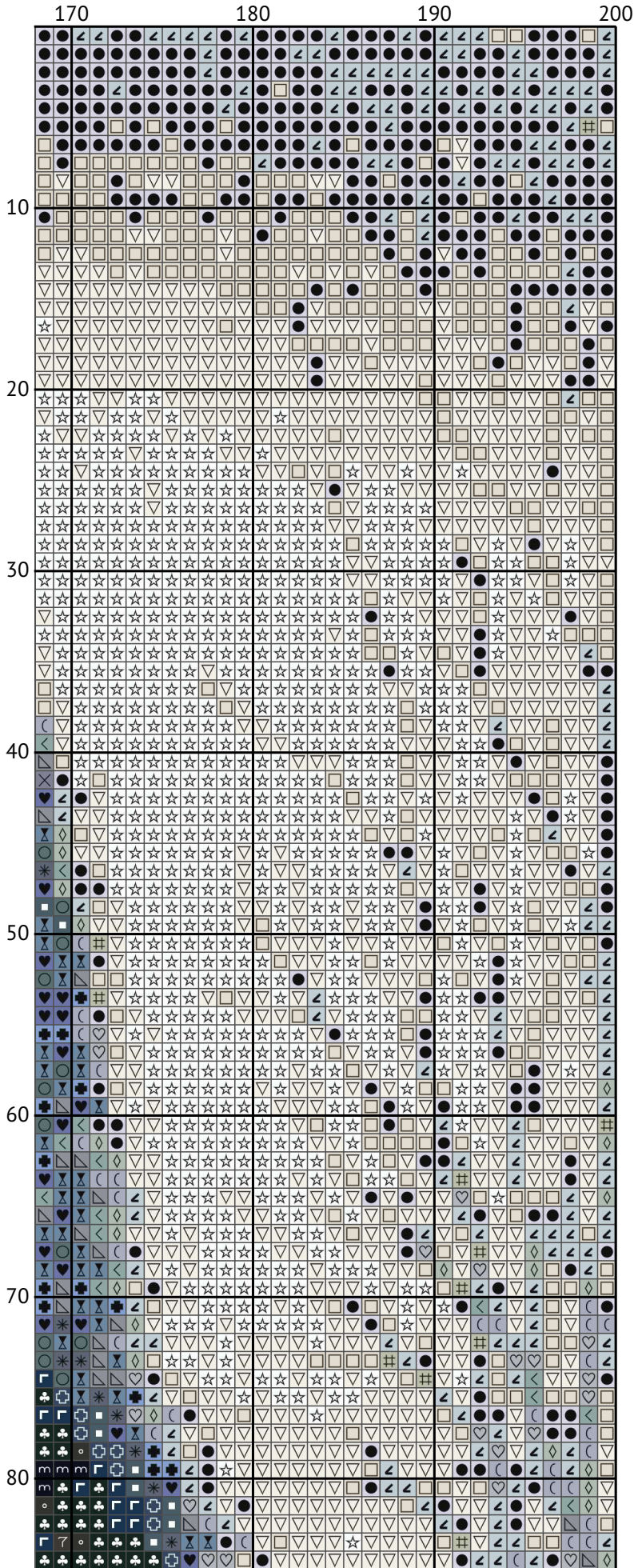
A majestic Siberian Husky



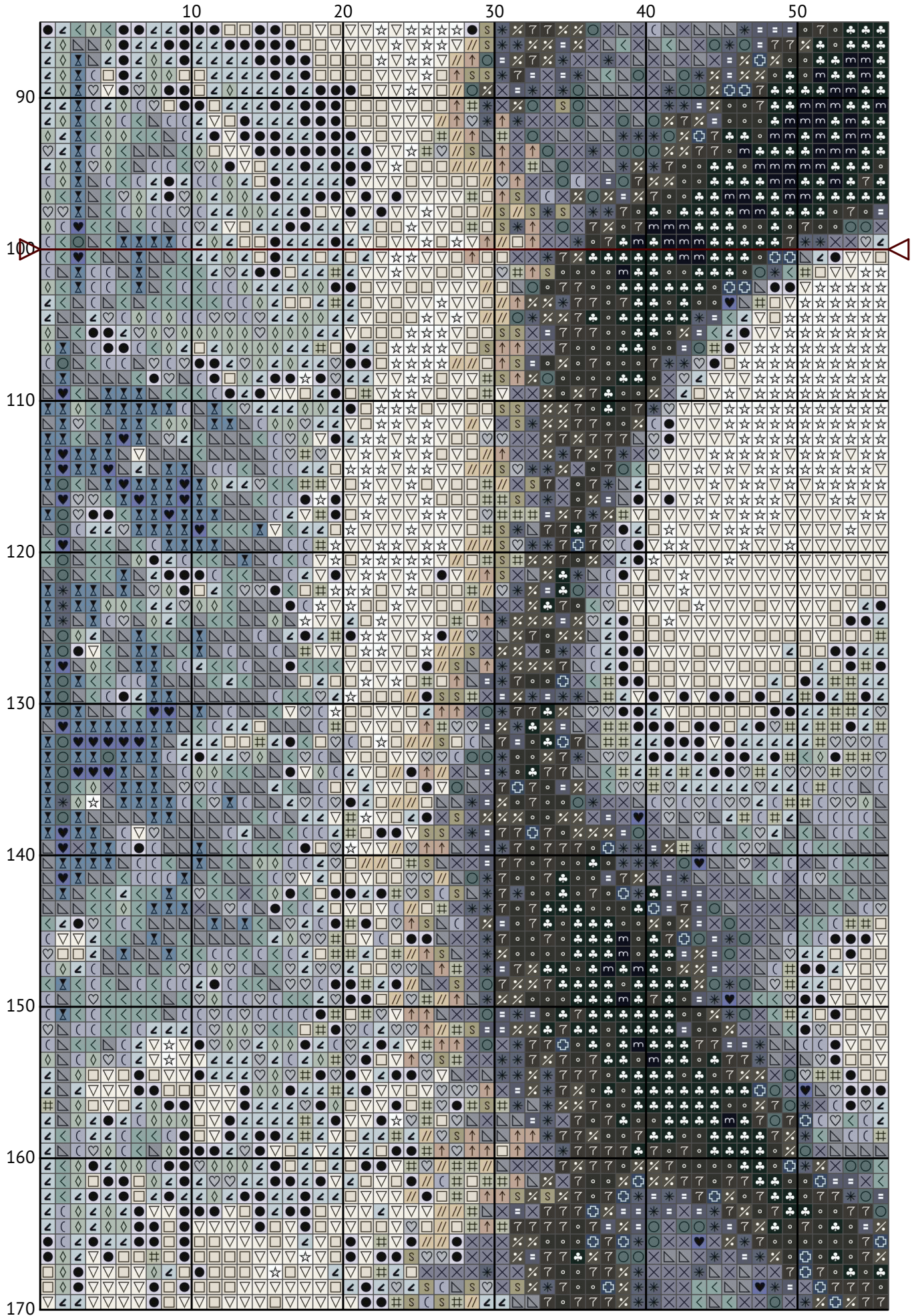
A majestic Siberian Husky



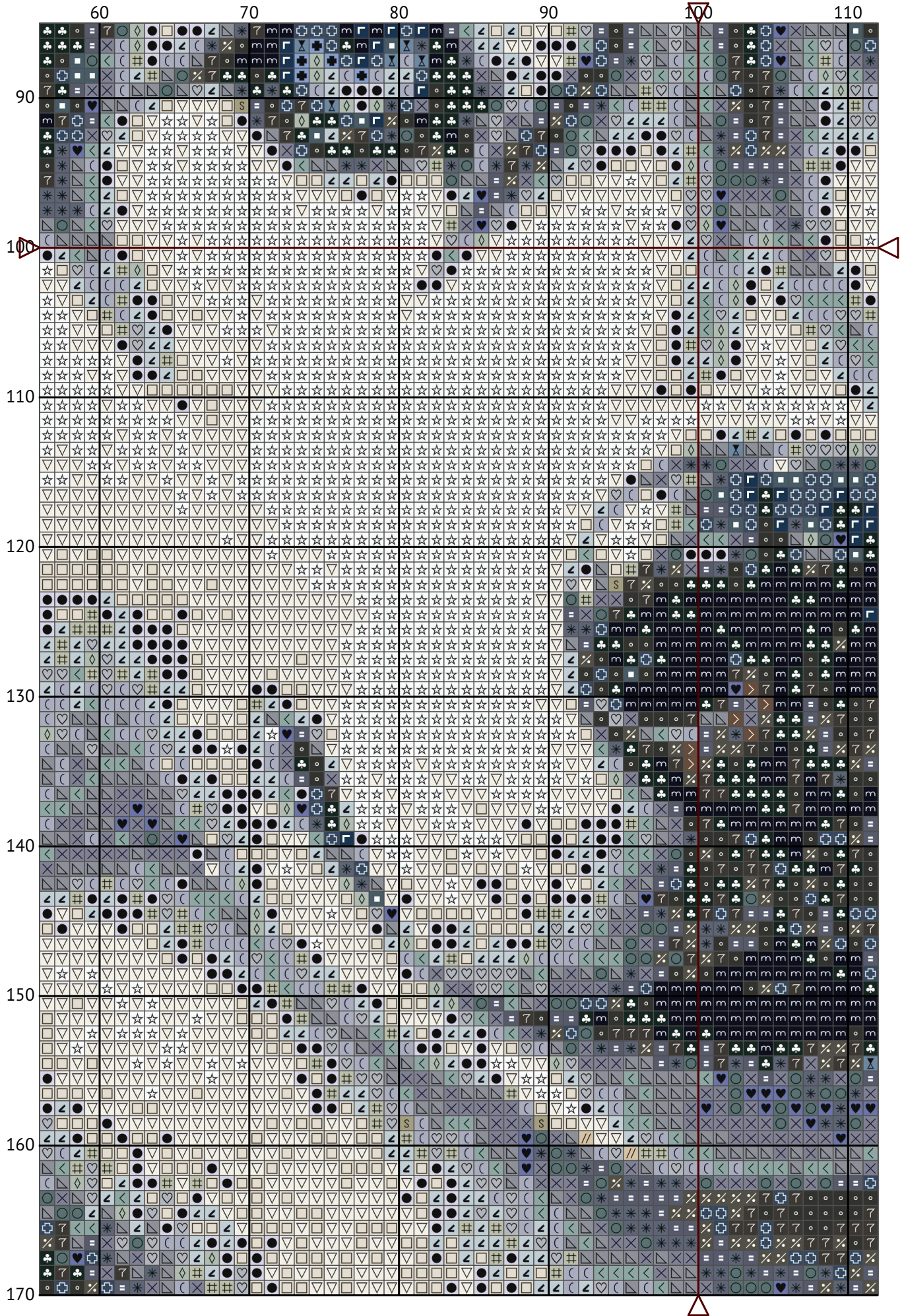
A majestic Siberian Husky



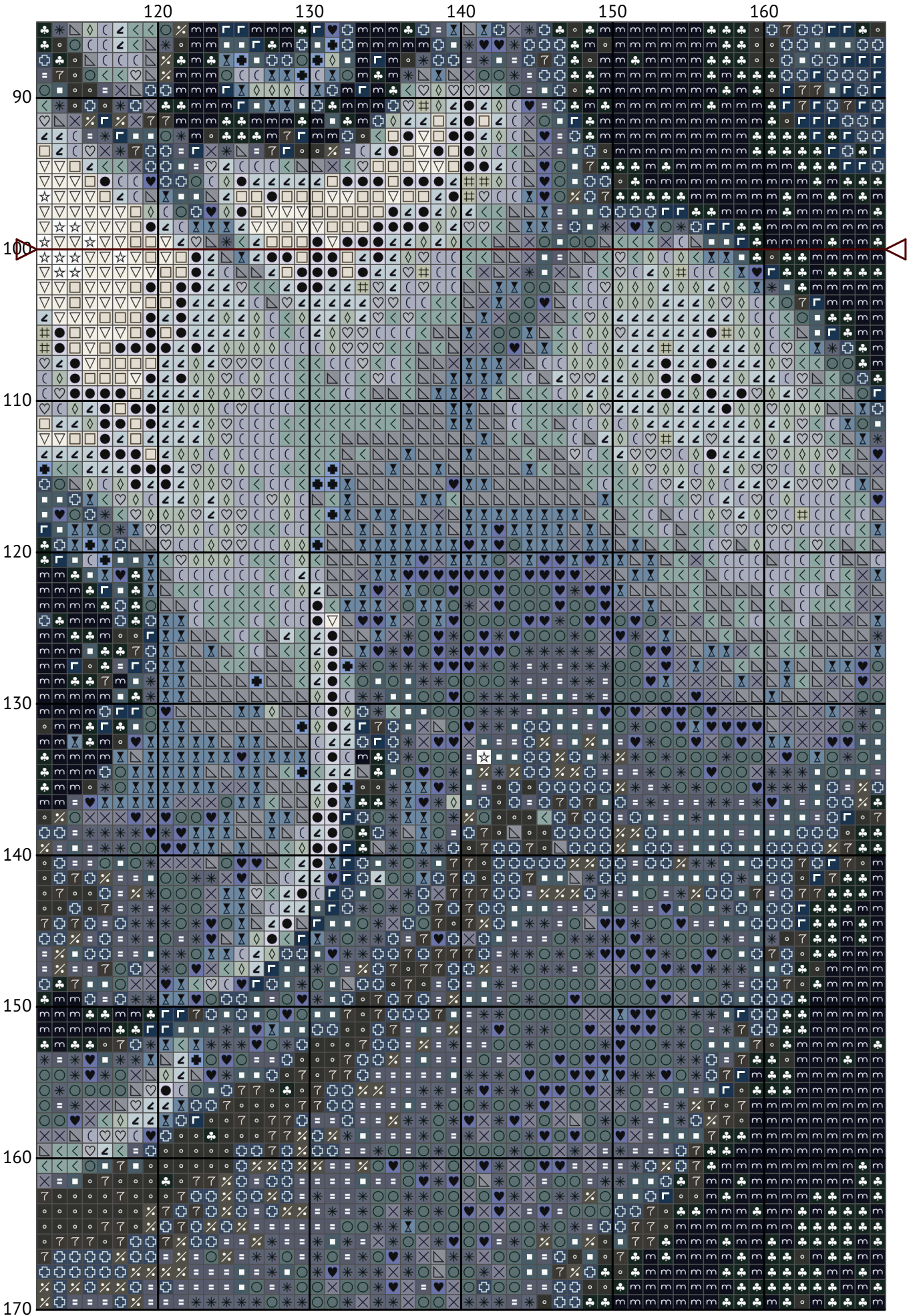
A majestic Siberian Husky



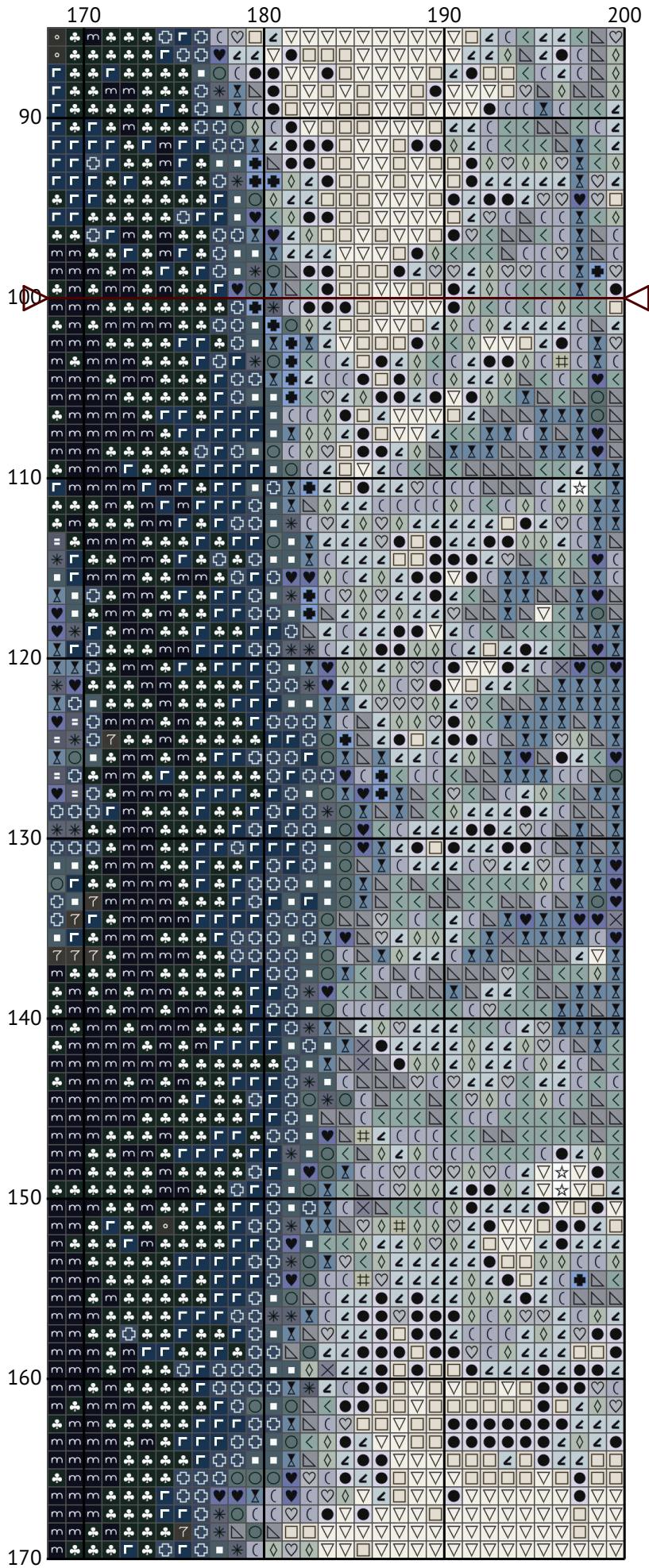
A majestic Siberian Husky



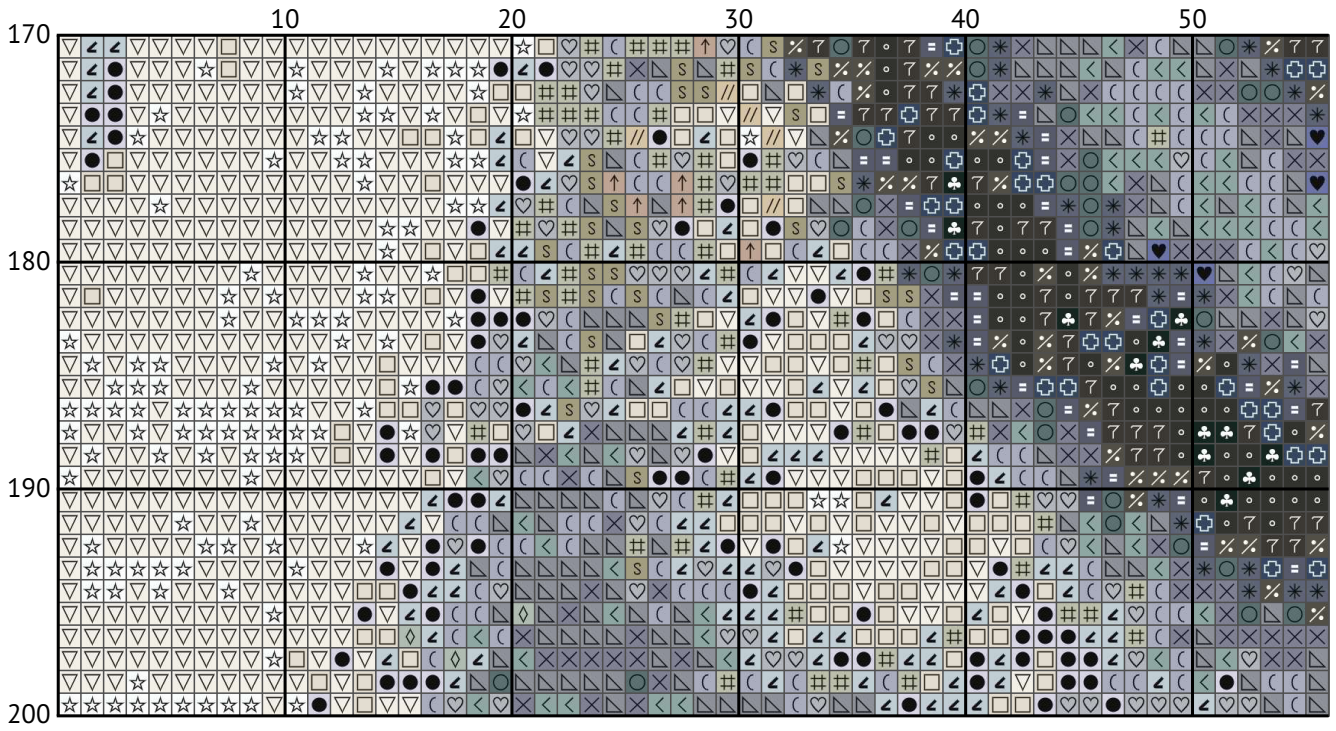
A majestic Siberian Husky



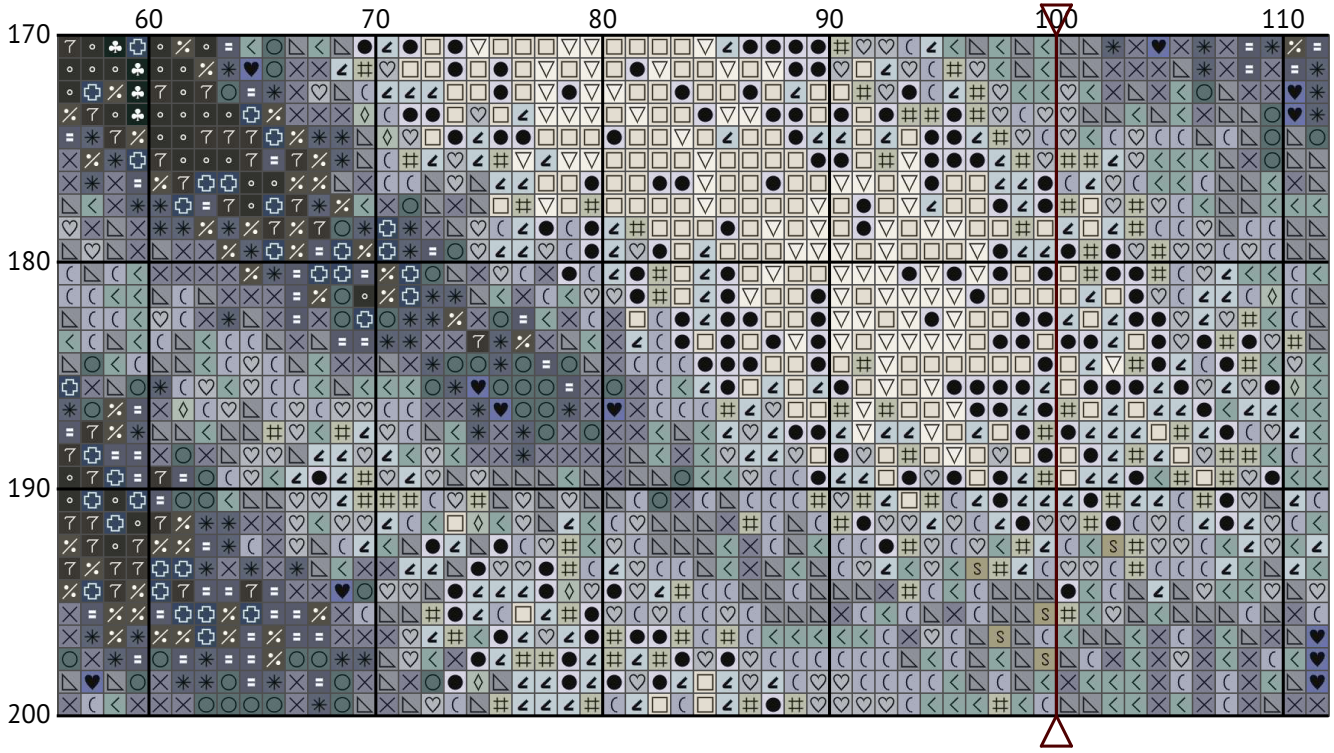
A majestic Siberian Husky



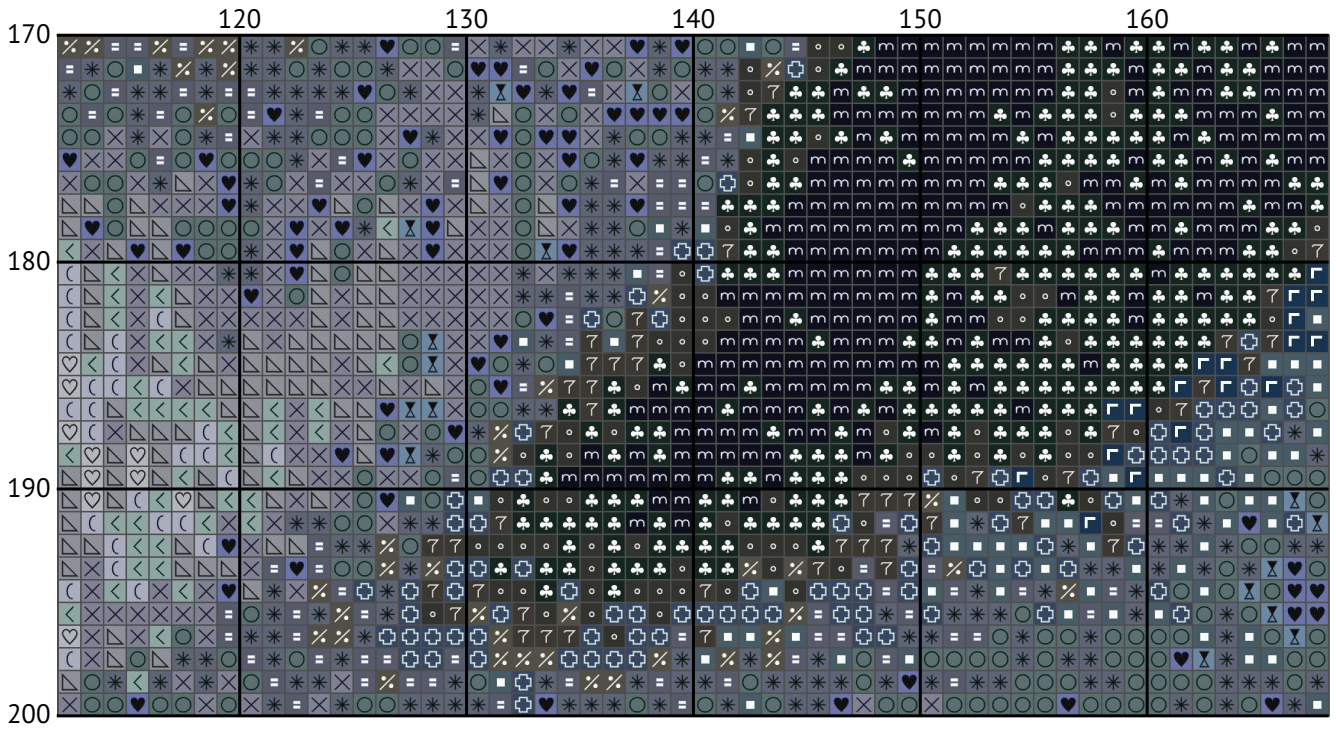
A majestic Siberian Husky



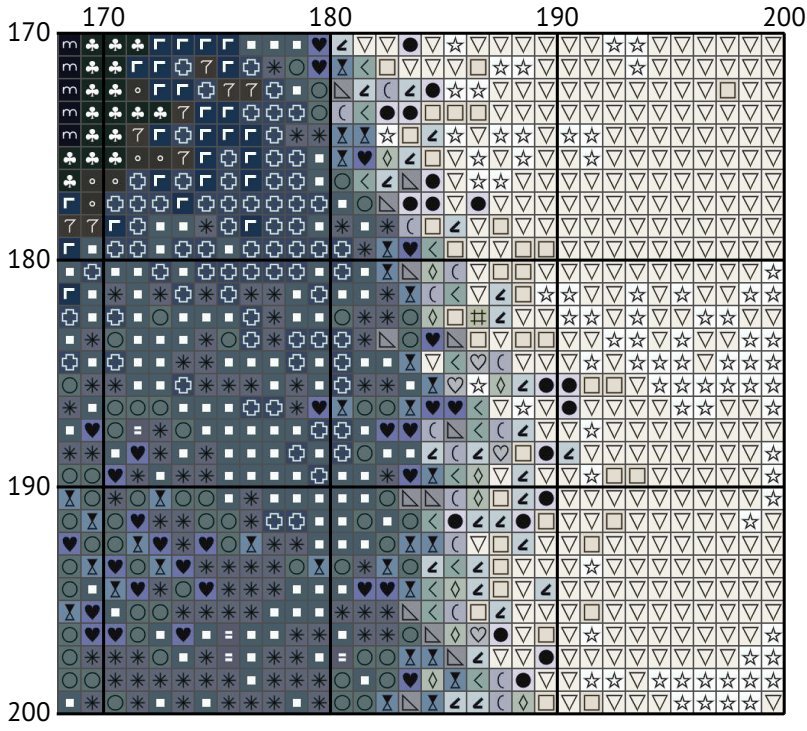
A majestic Siberian Husky



A majestic Siberian Husky



A majestic Siberian Husky



A majestic Siberian Husky
Floss list for crosses

How to Convert Cross Stitch Pattern Sizes: A Step-by-Step Guide

When you download a cross stitch pattern, you'll often find the design size expressed in stitches, such as "Design size: 200 x 200 stitches." To determine the physical dimensions of your design, you need to know the fabric's thread count, typically referred to as the "count." In this guide, we'll walk you through converting stitch count to inches and centimeters for a 14-count Aida fabric.

Understanding Fabric Count

The fabric count indicates how many threads (or squares) there are per inch. For example, a 14-count Aida fabric has 14 stitches per inch. This information is crucial for calculating the physical size of your cross stitch design.

Example Calculation for 200 x 200 Stitches on 14-Count Aida

Given:

Design size: 200 x 200 stitches

Fabric count: 14-count Aida

Steps to Calculate:

Calculate the size in inches:

Width: $200 \text{ stitches} \div 14 \text{ stitches per inch} = 14.29 \text{ inches}$

Height: $200 \text{ stitches} \div 14 \text{ stitches per inch} = 14.29 \text{ inches}$

Convert inches to centimeters (1 inch = 2.54 cm):

Width: $14.29 \text{ inches} \times 2.54 \text{ cm/inch} = 36.30 \text{ cm}$

Height: $14.29 \text{ inches} \times 2.54 \text{ cm/inch} = 36.30 \text{ cm}$

Summary of Dimensions for 14-Count Aida

















Width: 14.29 inches (36.30 cm)

Height: 14.29 inches (36.30 cm)

Conclusion

By following these steps, you can easily convert any design size in stitches to its physical dimensions in inches or centimeters based on the fabric count you are using. This ensures that your finished cross stitch piece will fit perfectly in your chosen frame or display area.

Happy stitching!

N	Symbol	Number	Name	Stitches
1	 	DMC B5200	Snow White	3560
2	 	DMC 02	Tin	1115
3	 	DMC 03	Tin - Medium	2193
4	 	DMC 06	Driftwood - Medium Light	75
5	 	DMC 08	Driftwood - Dark	67
6	 	DMC 27	Violet - White	2377
7	 	DMC 157	Cornflower Blue - Very Light	59
8	 	DMC 160	Gray Blue - Medium	530

A majestic Siberian Husky

N	Symbol	Number	Name	Stitches
9		DMC 168	Pewter - Very Light	2111
10		DMC 317	Pewter Gray	933
11		DMC 318	Steel Gray - Light	1483
12		DMC 414	Steel Gray - Dark	1387
13		DMC 415	Pearl Gray	1659
14		DMC 500	Blue Green - Very Dark	2416
15		DMC 645	Beaver Gray - Very Dark	813
16		DMC 822	Beige Gray - Light	99
17		DMC 844	Beaver Gray - Ultra Dark	1006
18		DMC 926	Gray Green - Medium	1283
19		DMC 927	Gray Green - Light	1379
20		DMC 928	Gray Green - Very Light	588
21		DMC 930	Antique Blue - Dark	1296
22		DMC 932	Antique Blue - Light	772
23		DMC 939	Navy Blue - Very Dark	1783
24		DMC 3023	Brown Gray - Light	166
25		DMC 3024	Brown Gray - Very Light	649
26		DMC 3750	Antique Blue - Very Dark	459
27		DMC 3768	Gray Green - Dark	650
28		DMC 3799	Pewter Gray - Very Dark	1294
29		DMC 3865	Winter White	5025
30		DMC 3866	Mocha - Ultra Very Light	2773