

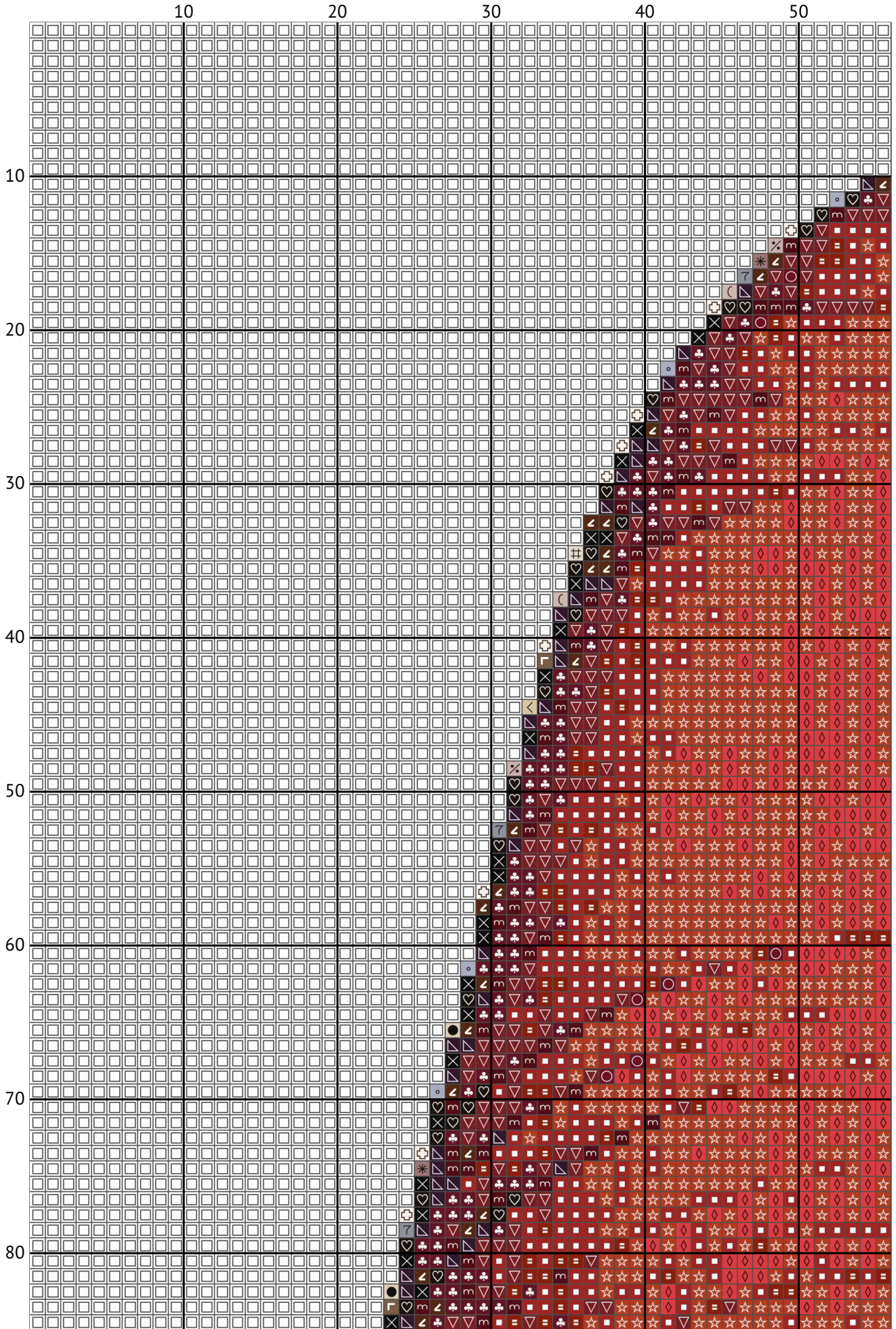
A charming gnom

Cross stitch patterns from csp.beehiiv.com

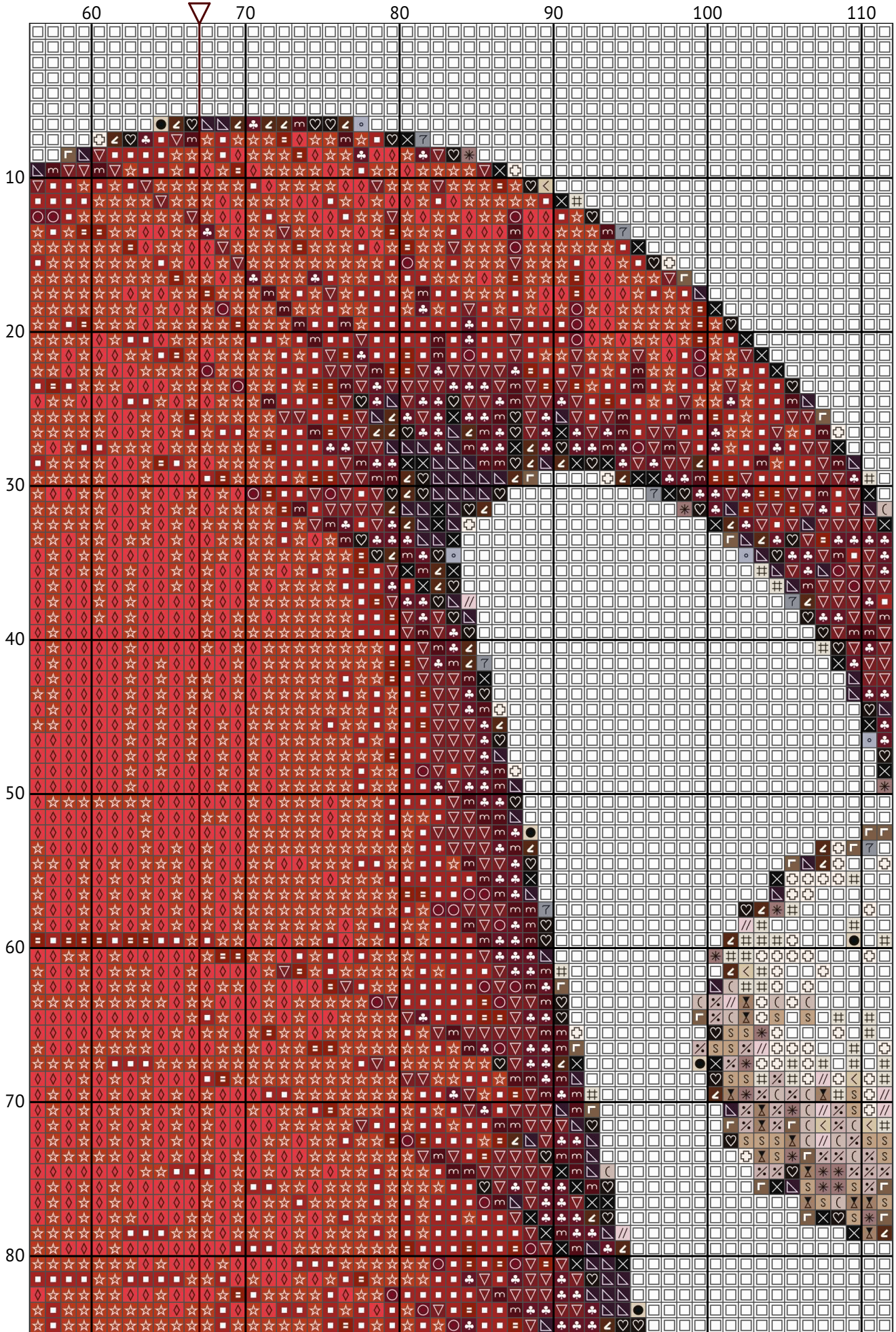


Design size: 134 x 200 stitches

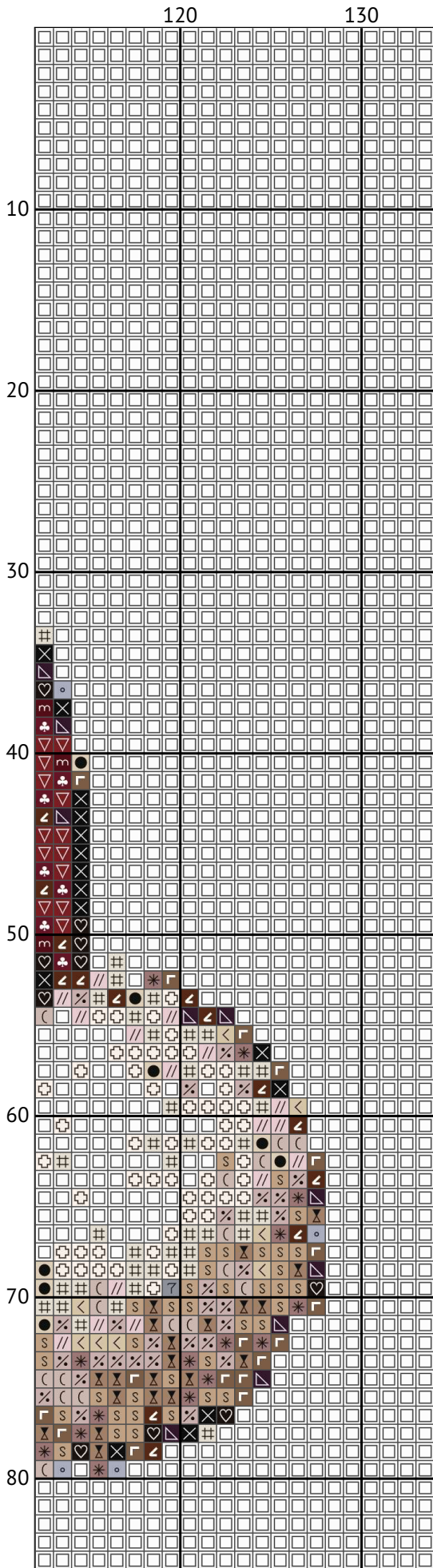
A charming gnom



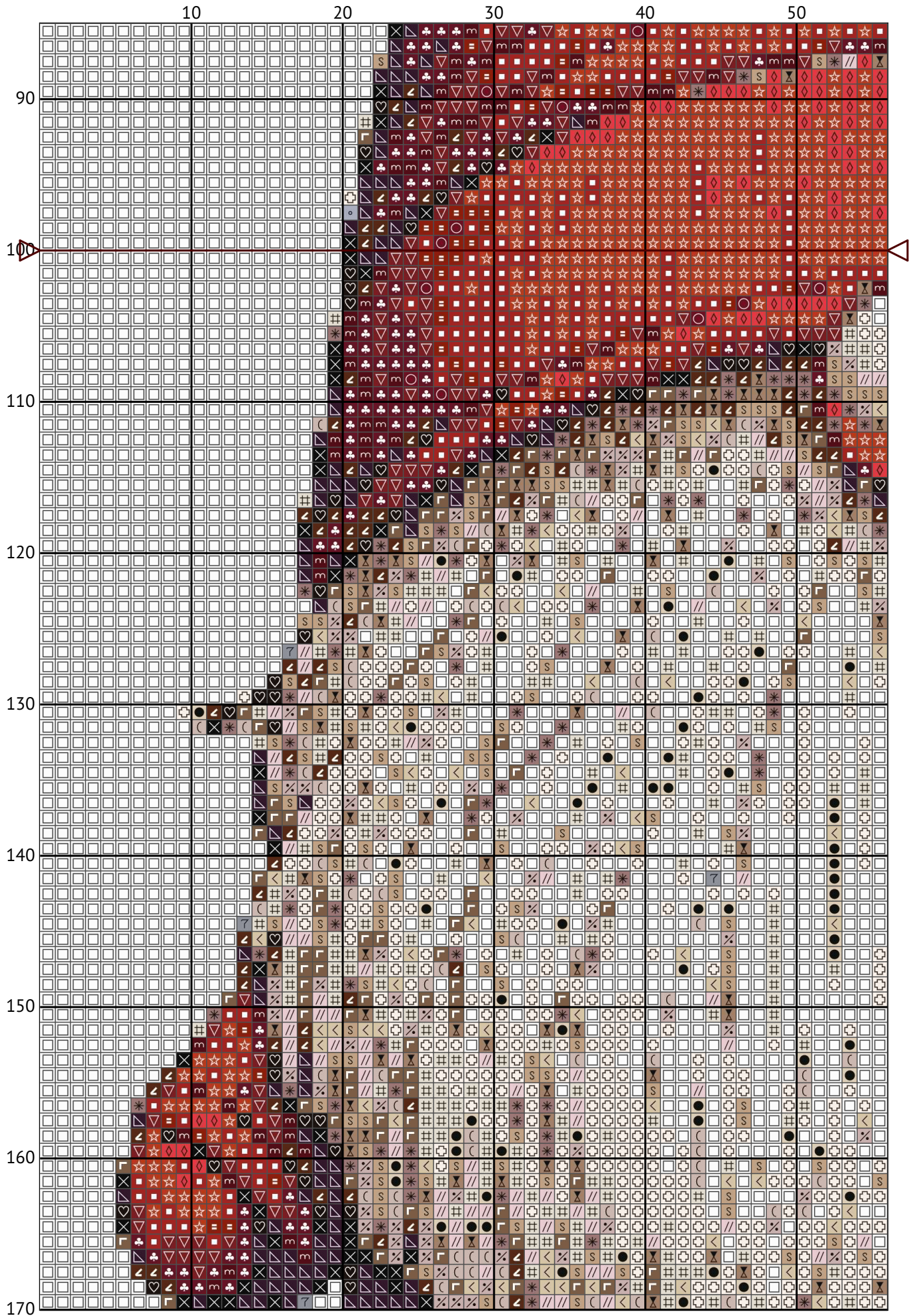
A charming gnom



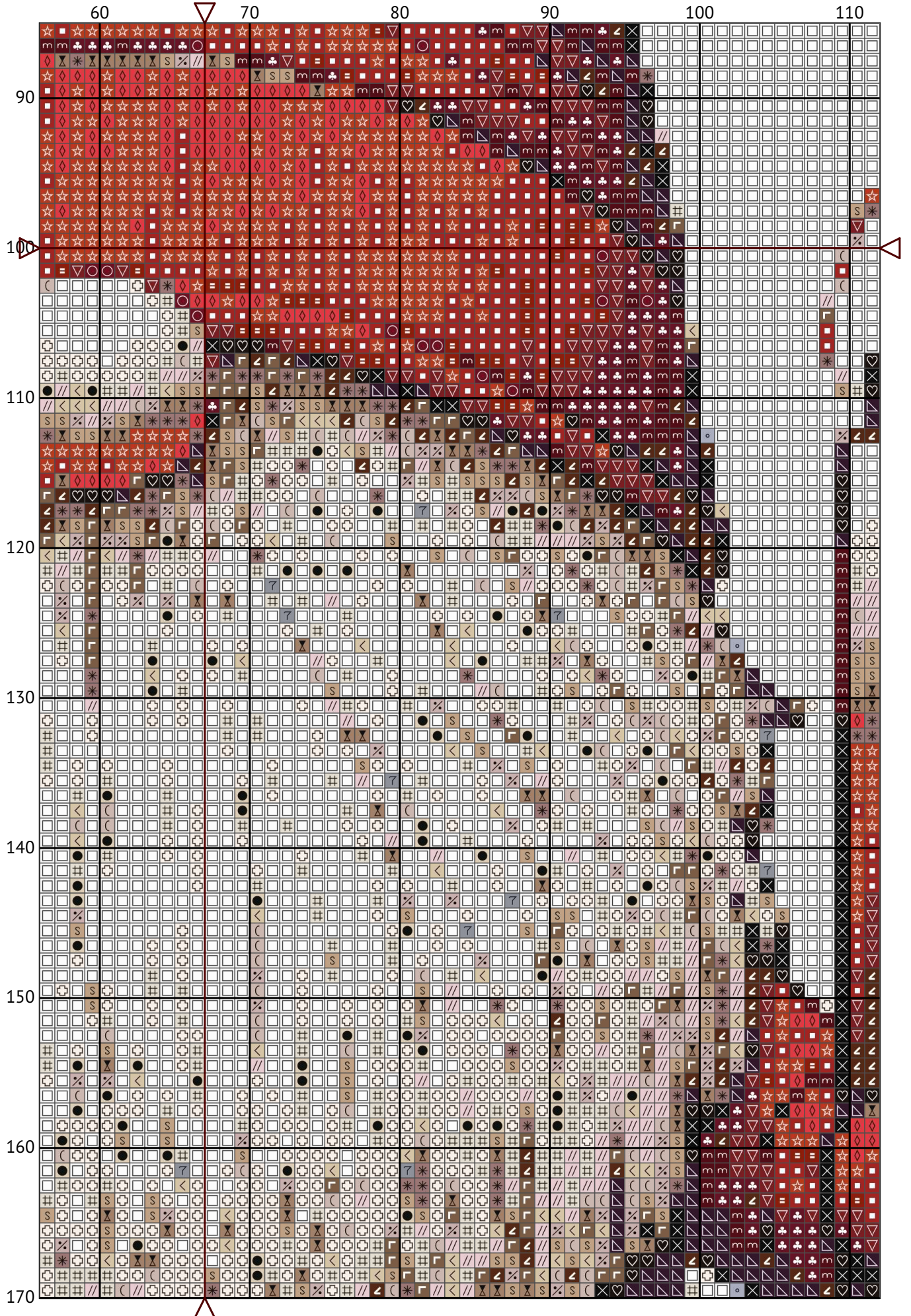
A charming gnom



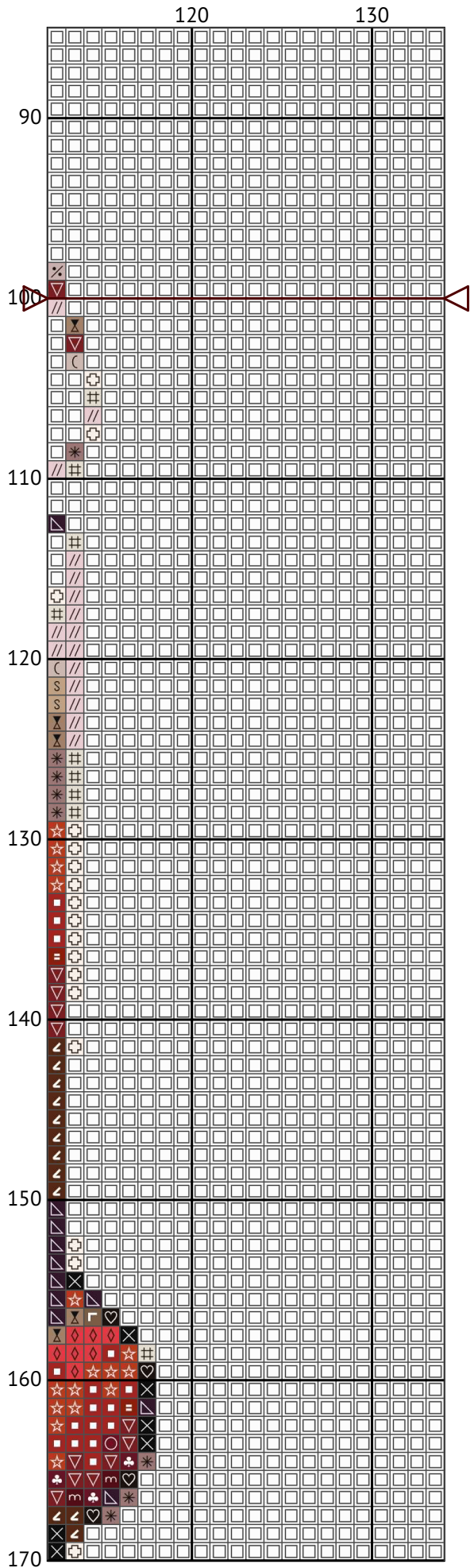
A charming gnom



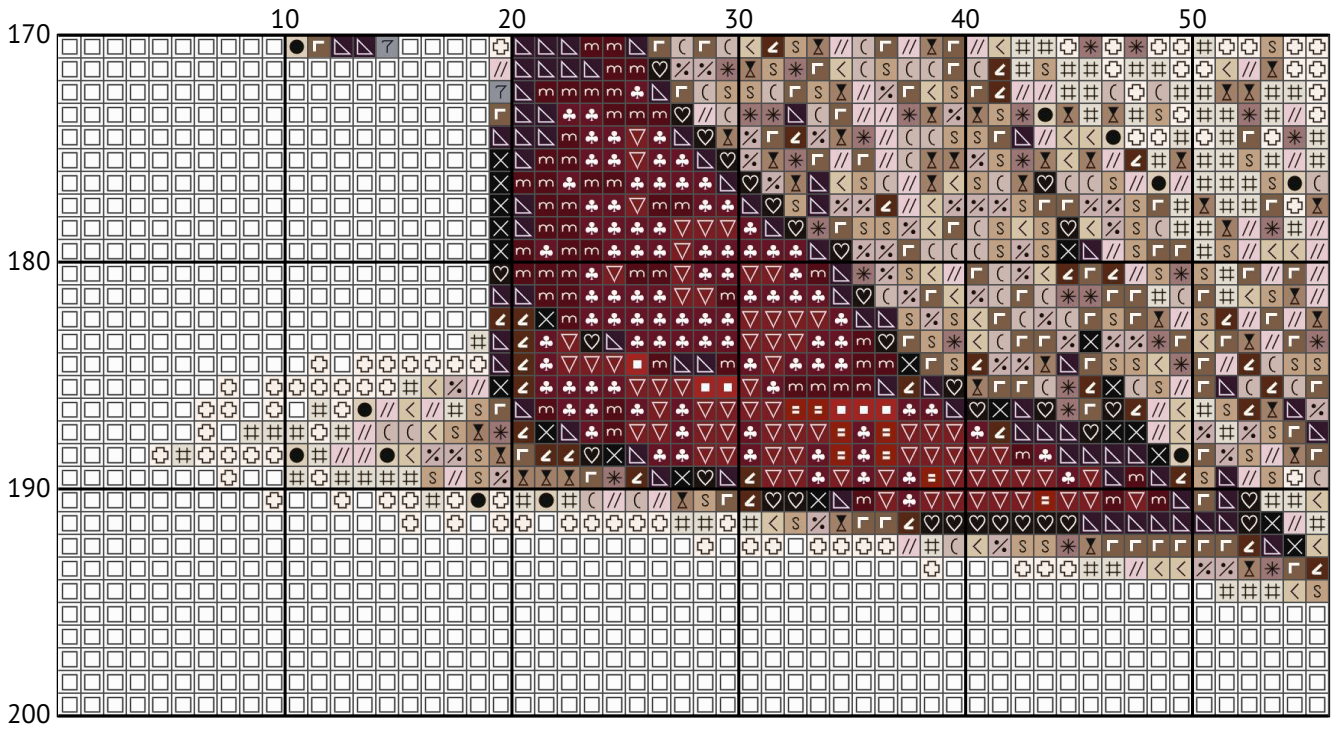
A charming gnom



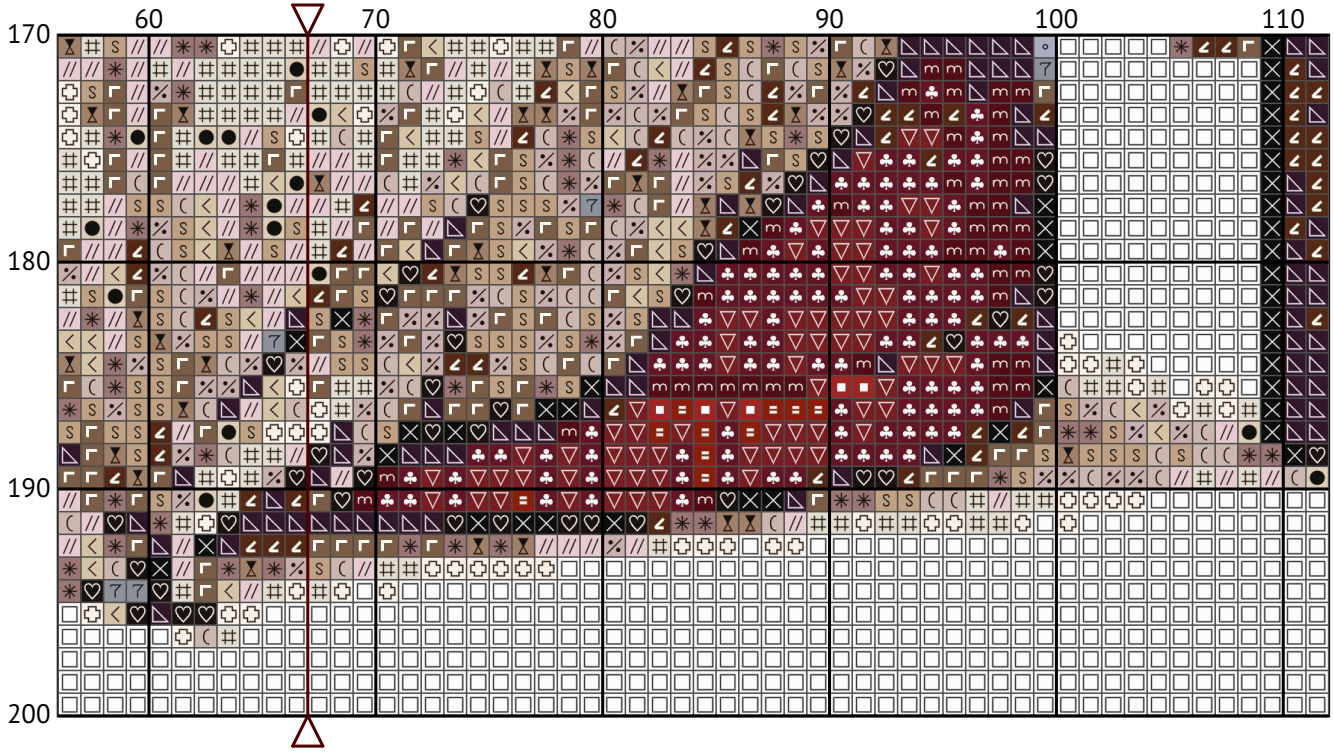
A charming gnom



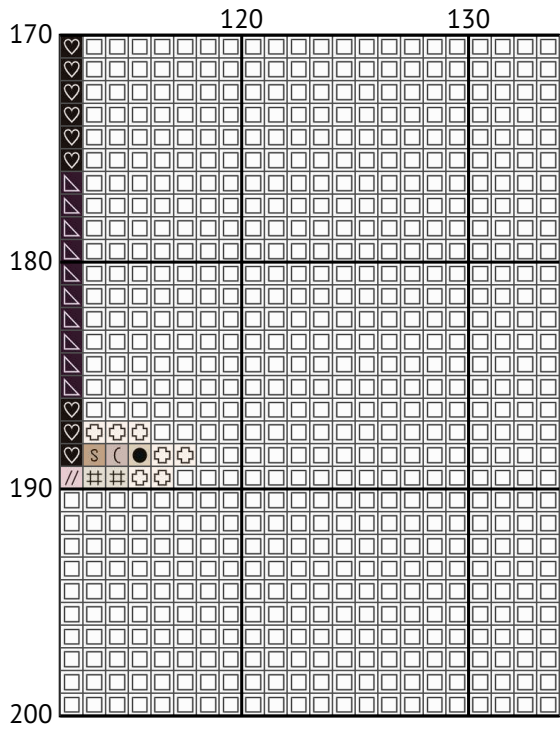
A charming gnom



A charming gnom



A charming gnom



Floss list for crosses

To calculate the size of a cross stitch design for a pattern that is 134 x 200 stitches, assuming you are using 14-count fabric, here's the process:

Identify the Fabric Count: We'll use 14-count fabric, which means there are 14 stitches per inch.

Calculate the Size in Inches:

For the width: Divide the number of stitches (134) by the fabric count (14). So, 134 stitches / 14 stitches per inch = approximately 9.57 inches.

For the height: Divide 200 stitches by 14 stitches per inch. So, 200 stitches / 14 stitches per inch = approximately 14.29 inches.

Calculate the Size in Centimeters:
















Convert inches to centimeters (1 inch = 2.54 cm).

For the width: 9.57 inches * 2.54 cm/inch = approximately 24.31 centimeters.




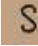











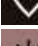

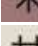




For the height: 14.29 inches * 2.54 cm/inch = approximately 36.32 centimeters.

Therefore, for a design size of 134 x 200 stitches on 14-count fabric, the design will approximately measure 9.57 inches (24.31 cm) in width and 14.29 inches (36.32 cm) in height.

Remember to include extra fabric around the edges for framing or finishing your cross stitch project.

N	Symbol	Number	Name	Stitches
1		DMC 03	Tin - Medium	33
2		DMC 22	Alizarin	1183
3		DMC 23	Apple Blossom	395
4		DMC 154	Grape - Very Dark	560
5		DMC 221	Shell Pink - Very Dark	800
6		DMC 310	Black	299
7		DMC 415	Pearl Gray	17
8		DMC 452	Shell Gray - Medium	345
9		DMC 453	Shell Gray - Light	310
10		DMC 801	Coffee Brown - Dark	385
11		DMC 814	Garnet - Dark	436
12		DMC 815	Garnet - Medium	71
13		DMC 819	Baby Pink - Light	1243
14		DMC 822	Beige Gray - Light	227
15		DMC 840	Beige Brown - Medium	426

A charming gnom

N	Symbol	Number	Name	Stitches
16		 DMC 841	Beige Brown - Light	309
17		 DMC 842	Beige Brown - Very Light	490
18		 DMC 902	Garnet - Very Dark	681
19		 DMC 919	Red Copper	287
20		 DMC 921	Copper	2488
21		 DMC 3033	Mocha Brown - Very Light	181
22		 DMC 3328	Salmon - Dark	1000
23		 DMC 3371	Black Brown	312
24		 DMC 3861	Cocoa - Light	304
25		 DMC 3866	Mocha - Ultra Very Light	721
26		 DMC B5200	Snow White	13297